


218 Purchase Crescent, Stittsville, Stittsville, Ontario, Canada, K2S 2L8



Property summary

 **1** Garages

 **3** Bedrooms

 **3** Bathrooms

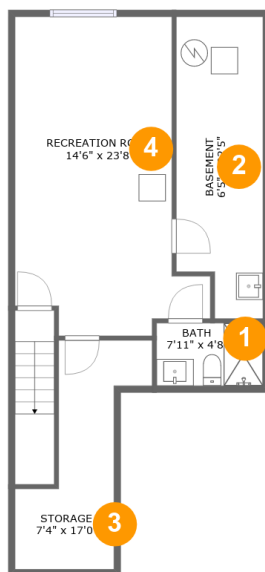
 **1** Half baths

 **3** Floors

 **1,841** Gross living area sqft

 **2,326** Total sqft

218 Purchase Crescent, Stittsville, Stittsville, Ontario, Canada, K2S 2L8



Room dimensions

Floor 1

Total sqft: 647 Living area: 392

#		Dimensions	sqft	Counted as living area
1	Bath	7'11" x 4'8"	37 sq. ft	Yes
2	Basement	6'5" x 22'5"	134 sq. ft	No
3	Storage	7'4" x 17'0"	99 sq. ft	No
4	Recreation Room	14'6" x 23'8"	276 sq. ft	Yes

218 Purchase Crescent, Stittsville, Stittsville, Ontario, Canada, K2S 2L8



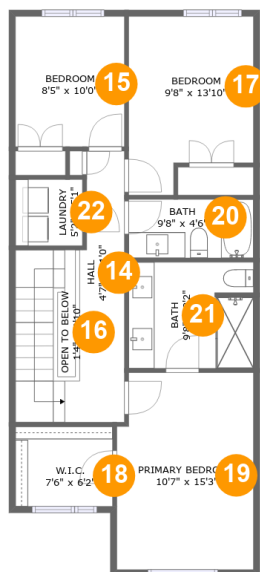
Room dimensions

Floor 2

Total sqft: 889 Living area: 671

#		Dimensions	sqft	Counted as living area
5	Garage	11'7" x 18'0"	197 sq. ft	No
6	Living Room	11'7" x 12'10"	153 sq. ft	Yes
7	Kitchen	8'0" x 15'1"	117 sq. ft	Yes
8	Pantry	4'4" x 4'8"	20 sq. ft	Yes
9	Dining Area	10'5" x 9'11"	89 sq. ft	Yes
10	Hall	7'4" x 8'1"	71 sq. ft	Yes
11	WC	6'1" x 6'6"	34 sq. ft	Yes
12	Foyer	7'4" x 11'1"	67 sq. ft	Yes
13	Breakfast Nook	6'10" x 9'7"	65 sq. ft	Yes

218 Purchase Crescent, Stittsville, Stittsville, Ontario, Canada, K2S 2L8



Room dimensions

Floor 3

Total sqft: 790 Living area: 778

#		Dimensions	sqft	Counted as living area
14	Hall	4'7" x 21'0"	123 sq. ft	Yes
15	Bedroom	8'5" x 10'0"	85 sq. ft	Yes
16	Open To Below	1'4" x 9'10"	12 sq. ft	No
17	Bedroom	9'8" x 13'10"	118 sq. ft	Yes
18	W.I.C.	7'6" x 6'2"	46 sq. ft	Yes
19	Primary Bedroom	10'7" x 15'3"	157 sq. ft	Yes
20	Bath	9'8" x 4'6"	44 sq. ft	Yes
21	Bath	9'8" x 8'2"	78 sq. ft	Yes
22	Laundry	5'2" x 5'1"	26 sq. ft	Yes

218 Purchase Crescent, Stittsville, Stittsville, Ontario, Canada, K2S 2L8

1 Floor 1 - Bath



Dimensions: 7'11" x 4'8"
Area: 37 sq. ft
Counted as living area: Yes

Heated: Yes
Finished: Yes
Enclosed: Yes
Contiguous: Yes
Permitted: Yes
Wet space: Yes
Addition: No
Conversion: No

2 Floor 1 - Basement

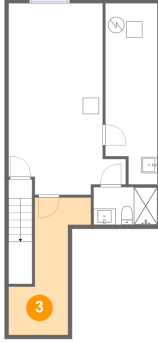


Dimensions: 6'5" x 22'5"
Area: 134 sq. ft
Counted as living area: No

Heated: Yes
Finished: No
Enclosed: Yes
Contiguous: Yes
Permitted: Yes
Wet space: No
Addition: No
Conversion: No

218 Purchase Crescent, Stittsville, Stittsville, Ontario,
Canada, K2S 2L8

3 Floor 1 - Storage



Dimensions: 7'4" x 17'0"
Area: 99 sq. ft
Counted as living area: No

Heated: No
Finished: No
Enclosed: No
Contiguous: Yes
Permitted: Yes
Wet space: No
Addition: No
Conversion: No

4 Floor 1 - Recreation Room



Dimensions: 14'6" x 23'8"
Area: 276 sq. ft
Counted as living area: Yes

Heated: Yes
Finished: Yes
Enclosed: Yes
Contiguous: Yes
Permitted: Yes
Wet space: No
Addition: No
Conversion: No

5 Floor 2 - Garage



Dimensions: 11'7" x 18'0"
Area: 197 sq. ft
Counted as living area: No

Heated: No
Finished: No
Enclosed: Yes
Contiguous: Yes
Permitted: Yes
Wet space: No
Addition: No
Conversion: No

218 Purchase Crescent, Stittsville, Stittsville, Ontario, Canada, K2S 2L8

6 Floor 2 - Living Room



Dimensions: 11'7" x 12'10"
Area: 153 sq. ft
Counted as living area: Yes

Heated: Yes
Finished: Yes
Enclosed: Yes
Contiguous: Yes
Permitted: Yes
Wet space: No
Addition: No
Conversion: No

7 Floor 2 - Kitchen



Dimensions: 8'0" x 15'1"
Area: 117 sq. ft
Counted as living area: Yes

Heated: Yes
Finished: Yes
Enclosed: Yes
Contiguous: Yes
Permitted: Yes
Wet space: No
Addition: No
Conversion: No

8 Floor 2 - Pantry



Dimensions: 4'4" x 4'8"
Area: 20 sq. ft
Counted as living area: Yes

Heated: Yes
Finished: Yes
Enclosed: Yes
Contiguous: Yes
Permitted: Yes
Wet space: No
Addition: No
Conversion: No

218 Purchase Crescent, Stittsville, Stittsville, Ontario, Canada, K2S 2L8

9 Floor 2 - Dining Area



Dimensions: 10'5" x 9'11"
Area: 89 sq. ft
Counted as living area: Yes

Heated: Yes
Finished: Yes
Enclosed: Yes
Contiguous: Yes
Permitted: Yes
Wet space: No
Addition: No
Conversion: No

10 Floor 2 - Hall



Dimensions: 7'4" x 8'1"
Area: 71 sq. ft
Counted as living area: Yes

Heated: Yes
Finished: Yes
Enclosed: Yes
Contiguous: Yes
Permitted: Yes
Wet space: No
Addition: No
Conversion: No

11 Floor 2 - WC



Dimensions: 6'1" x 6'6"
Area: 34 sq. ft
Counted as living area: Yes

Heated: Yes
Finished: Yes
Enclosed: Yes
Contiguous: Yes
Permitted: Yes
Wet space: Yes
Addition: No
Conversion: No

218 Purchase Crescent, Stittsville, Stittsville, Ontario,
Canada, K2S 2L8

12 Floor 2 - Foyer



Dimensions: 7'4" x 11'1"
Area: 67 sq. ft
Counted as living area: Yes

Heated: Yes
Finished: Yes
Enclosed: Yes
Contiguous: Yes
Permitted: Yes
Wet space: No
Addition: No
Conversion: No

13 Floor 2 - Breakfast Nook



Dimensions: 6'10" x 9'7"
Area: 65 sq. ft
Counted as living area: Yes

Heated: Yes
Finished: Yes
Enclosed: Yes
Contiguous: Yes
Permitted: Yes
Wet space: No
Addition: No
Conversion: No

14 Floor 3 - Hall

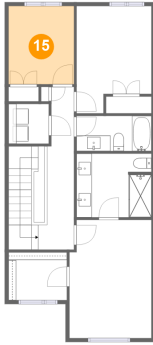


Dimensions: 4'7" x 21'0"
Area: 123 sq. ft
Counted as living area: Yes

Heated: Yes
Finished: Yes
Enclosed: Yes
Contiguous: Yes
Permitted: Yes
Wet space: No
Addition: No
Conversion: No

218 Purchase Crescent, Stittsville, Stittsville, Ontario, Canada, K2S 2L8

15 Floor 3 - Bedroom



Dimensions: 8'5" x 10'0"
Area: 85 sq. ft
Counted as living area: Yes

Heated: Yes
Finished: Yes
Enclosed: Yes
Contiguous: Yes
Permitted: Yes
Wet space: No
Addition: No
Conversion: No

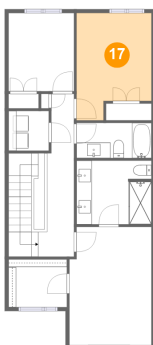
16 Floor 3 - Open To Below



Dimensions: 1'4" x 9'10"
Area: 12 sq. ft
Counted as living area: No

Heated: No
Finished: No
Enclosed: No
Contiguous: Yes
Permitted: No
Wet space: No
Addition: No
Conversion: No

17 Floor 3 - Bedroom



Dimensions: 9'8" x 13'10"
Area: 118 sq. ft
Counted as living area: Yes

Heated: Yes
Finished: Yes
Enclosed: Yes
Contiguous: Yes
Permitted: Yes
Wet space: No
Addition: No
Conversion: No

218 Purchase Crescent, Stittsville, Stittsville, Ontario,
Canada, K2S 2L8

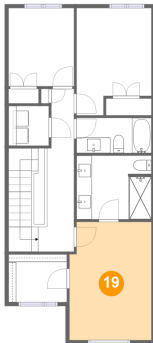
18 Floor 3 - W.I.C.



Dimensions: 7'6" x 6'2"
Area: 46 sq. ft
Counted as living area: Yes

Heated: Yes
Finished: Yes
Enclosed: Yes
Contiguous: Yes
Permitted: Yes
Wet space: No
Addition: No
Conversion: No

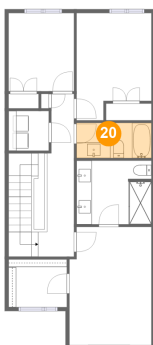
19 Floor 3 - Primary Bedroom



Dimensions: 10'7" x 15'3"
Area: 157 sq. ft
Counted as living area: Yes

Heated: Yes
Finished: Yes
Enclosed: Yes
Contiguous: Yes
Permitted: Yes
Wet space: No
Addition: No
Conversion: No

20 Floor 3 - Bath



Dimensions: 9'8" x 4'6"
Area: 44 sq. ft
Counted as living area: Yes

Heated: Yes
Finished: Yes
Enclosed: Yes
Contiguous: Yes
Permitted: Yes
Wet space: Yes
Addition: No
Conversion: No

218 Purchase Crescent, Stittsville, Stittsville, Ontario,
Canada, K2S 2L8

21 Floor 3 - Bath



Dimensions: 9'8" x 8'2"
Area: 78 sq. ft
Counted as living area: Yes

Heated: Yes
Finished: Yes
Enclosed: Yes
Contiguous: Yes
Permitted: Yes
Wet space: Yes
Addition: No
Conversion: No

22 Floor 3 - Laundry



Dimensions: 5'2" x 5'1"
Area: 26 sq. ft
Counted as living area: Yes

Heated: Yes
Finished: Yes
Enclosed: Yes
Contiguous: Yes
Permitted: Yes
Wet space: No
Addition: No
Conversion: No