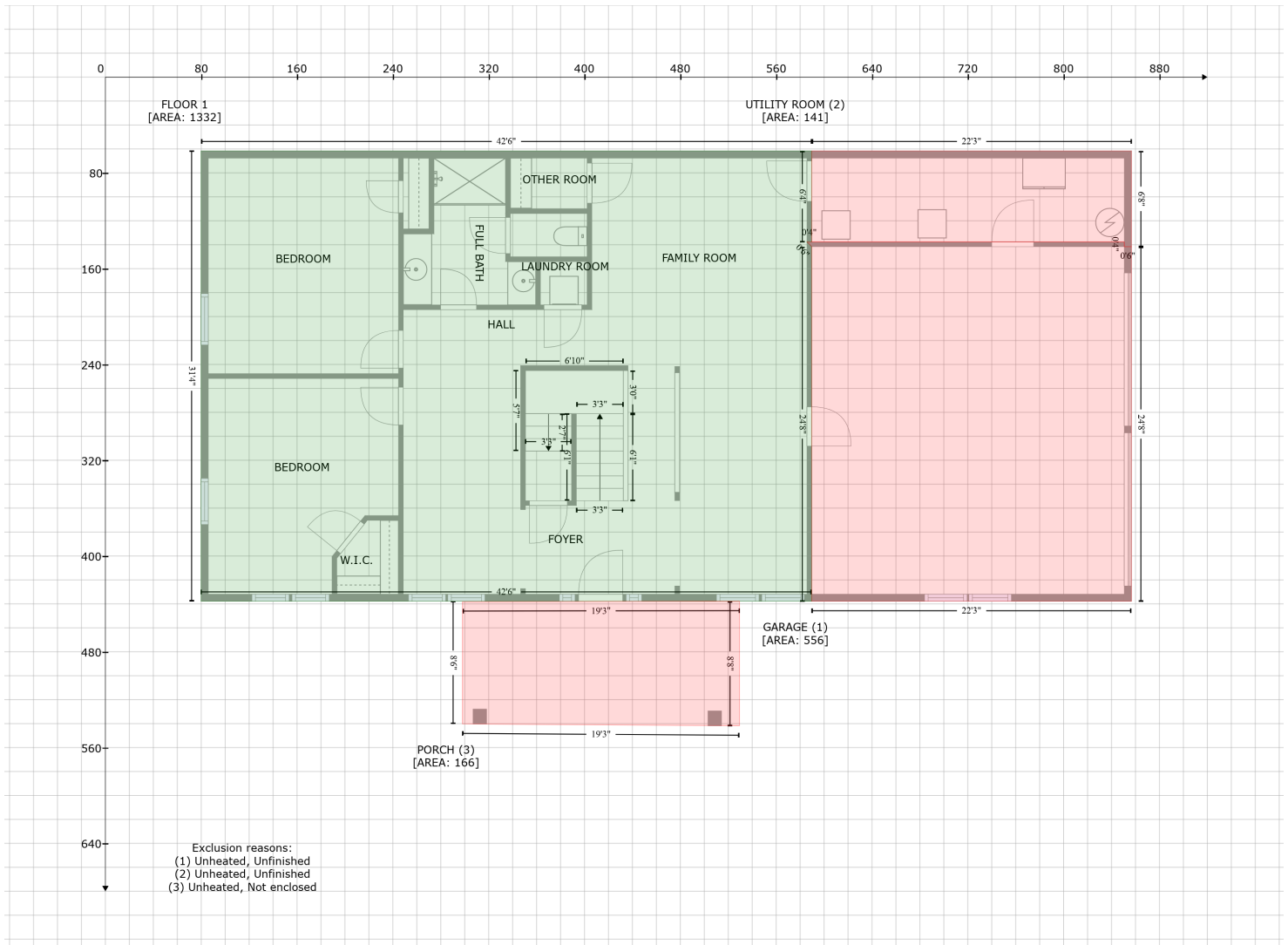


7849 Barnhill Rd, Primm Springs, Tennessee, United States

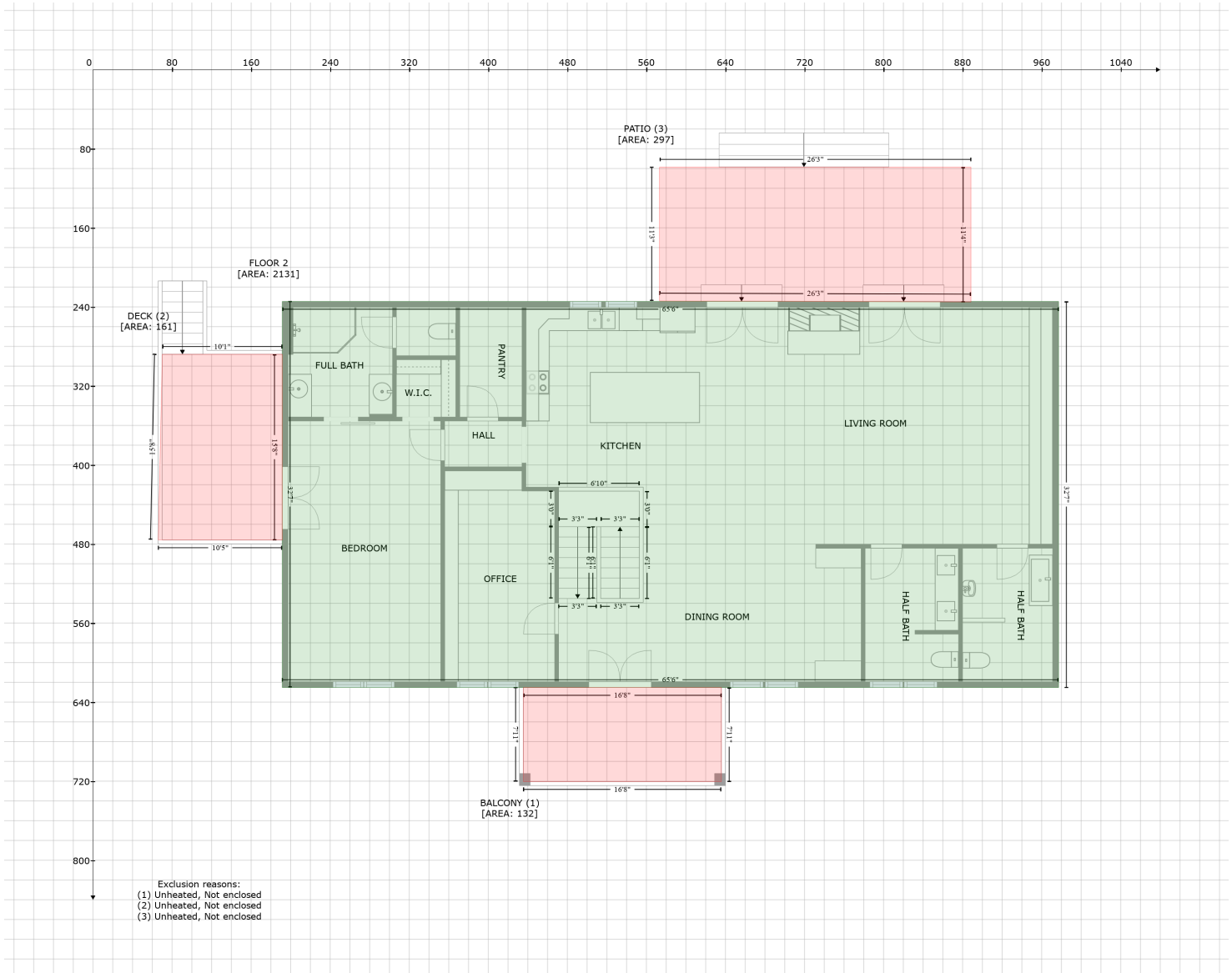
Gross Living Area: 3463 sq. ft



Space	Area (sq. ft)	Calculation
FLOOR 1 (Living area)	1332	$-\left((589.7 + 589.7) * (61.6 - 137.7) + (589.7 + 585.7) * (137.7 - 137.7) + (585.7 + 589.7) * (137.7 - 141.7) + (589.7 + 589.7) * (141.7 - 437.9) + (589.7 + 529.4) * (437.9 - 437.9) + (529.4 + 529.4) * (437.9 - 437.8) + (529.4 + 464.7) * (437.8 - 437.9) + (464.7 + 79.9) * (437.9 - 437.9) + (79.9 + 79.9) * (437.9 - 61.6) + (79.9 + 589.7) * (61.6 - 61.6)\right) * 0.5 * 0.00694$
GARAGE (Non-living area)	556	$-\left((856.6 + 856.6) * (137.7 - 141.7) + (856.6 + 856.6) * (141.7 - 141.7) + (856.6 + 856.6) * (141.7 - 437.9) + (856.6 + 589.7) * (437.9 - 437.9) + (589.7 + 589.7) * (437.9 - 141.7) + (589.7 + 585.7) * (141.7 - 137.7) + (585.7 + 856.6) * (137.7 - 137.7)\right) * 0.5 * 0.00694$
UTILITY ROOM (Non-living area)	141	$-\left((856.6 + 856.6) * (61.6 - 141.7) + (856.6 + 856.6) * (141.7 - 141.7) + (856.6 + 856.6) * (141.7 - 137.7) + (856.6 + 589.7) * (137.7 - 137.7) + (589.7 + 589.7) * (137.7 - 61.6) + (589.7 + 856.6) * (61.6 - 61.6)\right) * 0.5 * 0.00694$
PORCH (Non-living area)	166	$-\left((529.4 + 529.4) * (437.8 - 541.8) + (529.4 + 298.2) * (541.8 - 540.3) + (298.2 + 298.2) * (540.3 - 438.1) + (298.2 + 529.4) * (438.1 - 437.8)\right) * 0.5 * 0.00694$

7849 Barnhill Rd, Primm Springs, Tennessee, United States

Gross Living Area: 3463 sq. ft



Space	Area (sq. ft)	Calculation
FLOOR 2 (Living area)	2131	$-\left(\left(730.2 + 888.5\right) * \left(234.5 - 235\right) + \left(888.5 + 888.5\right) * \left(235 - 234.5\right) + \left(888.5 + 977.1\right) * \left(234.5 - 234.5\right) + \left(977.1 + 977.1\right) * \left(234.5 - 625.2\right) + \left(977.1 + 191.5\right) * \left(625.2 - 625.2\right) + \left(191.5 + 191.5\right) * \left(625.2 - 234.5\right) + \left(191.5 + 730.2\right) * \left(234.5 - 234.5\right)\right) * 0.5 * 0.00694$
BALCONY (Non-living area)	132	$-\left(\left(635.9 + 635.9\right) * \left(625.2 - 720.5\right) + \left(635.9 + 435.5\right) * \left(720.5 - 720.5\right) + \left(435.5 + 435.5\right) * \left(720.5 - 625.2\right) + \left(435.5 + 635.9\right) * \left(625.2 - 625.2\right)\right) * 0.5 * 0.00694$
DECK (Non-living area)	161	$-\left(\left(191.5 + 191.5\right) * \left(288 - 475.9\right) + \left(191.5 + 66\right) * \left(475.9 - 475.9\right) + \left(66 + 70.1\right) * \left(475.9 - 288\right) + \left(70.1 + 191.5\right) * \left(288 - 288\right)\right) * 0.5 * 0.00694$
PATIO (Non-living area)	297	$-\left(\left(888.5 + 888.5\right) * \left(98.6 - 235\right) + \left(888.5 + 573.3\right) * \left(235 - 234\right) + \left(573.3 + 573.3\right) * \left(234 - 98.6\right) + \left(573.3 + 888.5\right) * \left(98.6 - 98.6\right)\right) * 0.5 * 0.00694$