

LIVING ROOM
8'8" x 14'1"

KITCHEN
8'9" x 11'0"

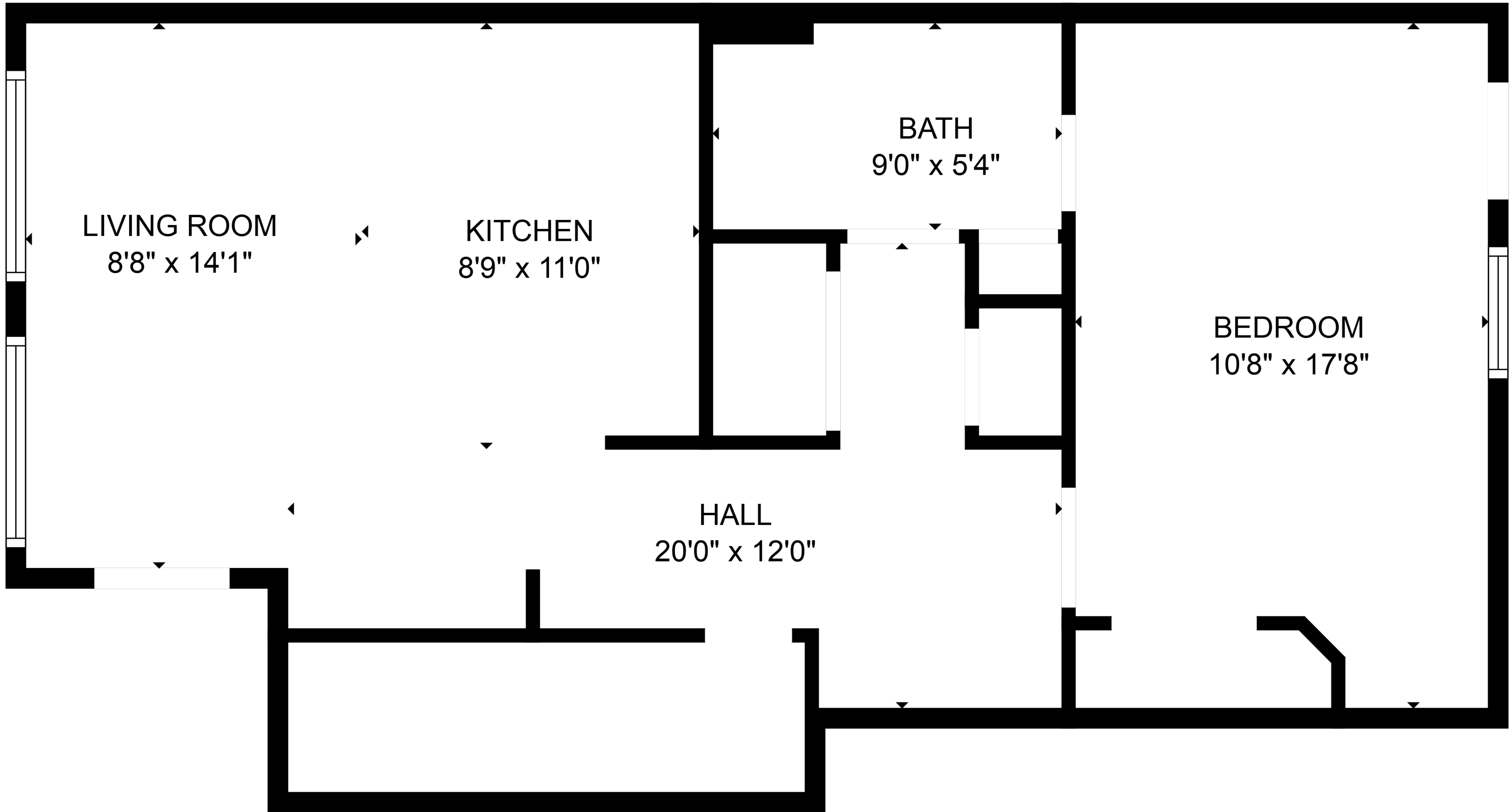
BATH
9'0" x 5'4"

BEDROOM
10'8" x 17'8"

HALL
20'0" x 12'0"

TOTAL: 672 sq. ft
FLOOR 1: 672 sq. ft

SIZES AND DIMENSIONS ARE APPROXIMATE, ACTUAL MAY VARY.



LIVING ROOM
8'8" x 14'1"

KITCHEN
8'9" x 11'0"

BATH
9'0" x 5'4"

BEDROOM
10'8" x 17'8"

HALL
20'0" x 12'0"

TOTAL: 672 sq. ft
FLOOR 1: 672 sq. ft

SIZES AND DIMENSIONS ARE APPROXIMATE, ACTUAL MAY VARY.