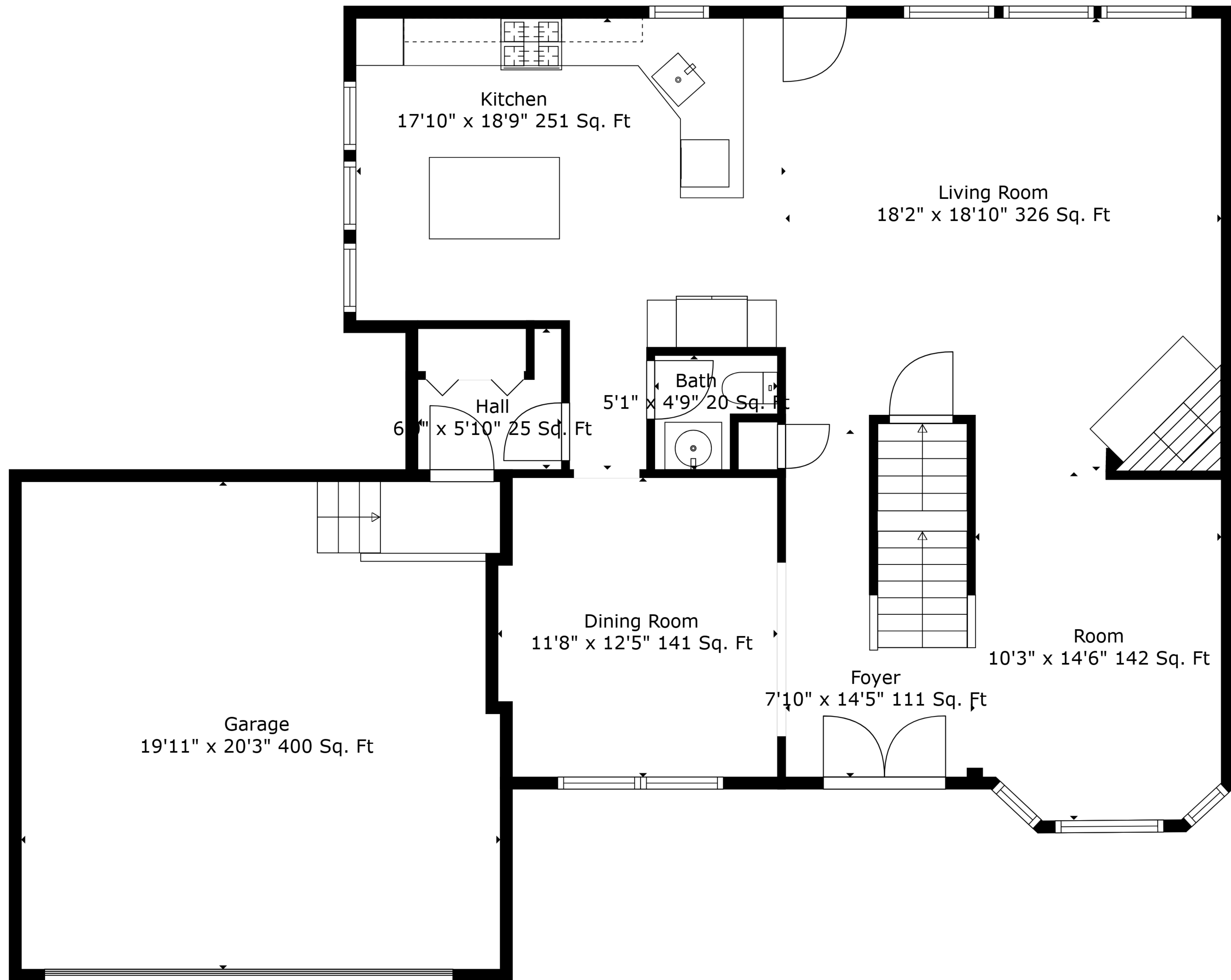


Basement  
33'5" x 30'7" 936 Sq. Ft

**TOTAL: 2363 sq. ft**  
BELOW GROUND: 0 sq. ft, FLOOR 2: 1056 sq. ft, FLOOR 3: 1307 sq. ft  
EXCLUDED AREAS: BASEMENT: 936 sq. ft, GARAGE: 400 sq. ft, OPEN TO BELOW: 79 sq. ft

Measurements Are Deemed Highly Reliable But Not Guaranteed.

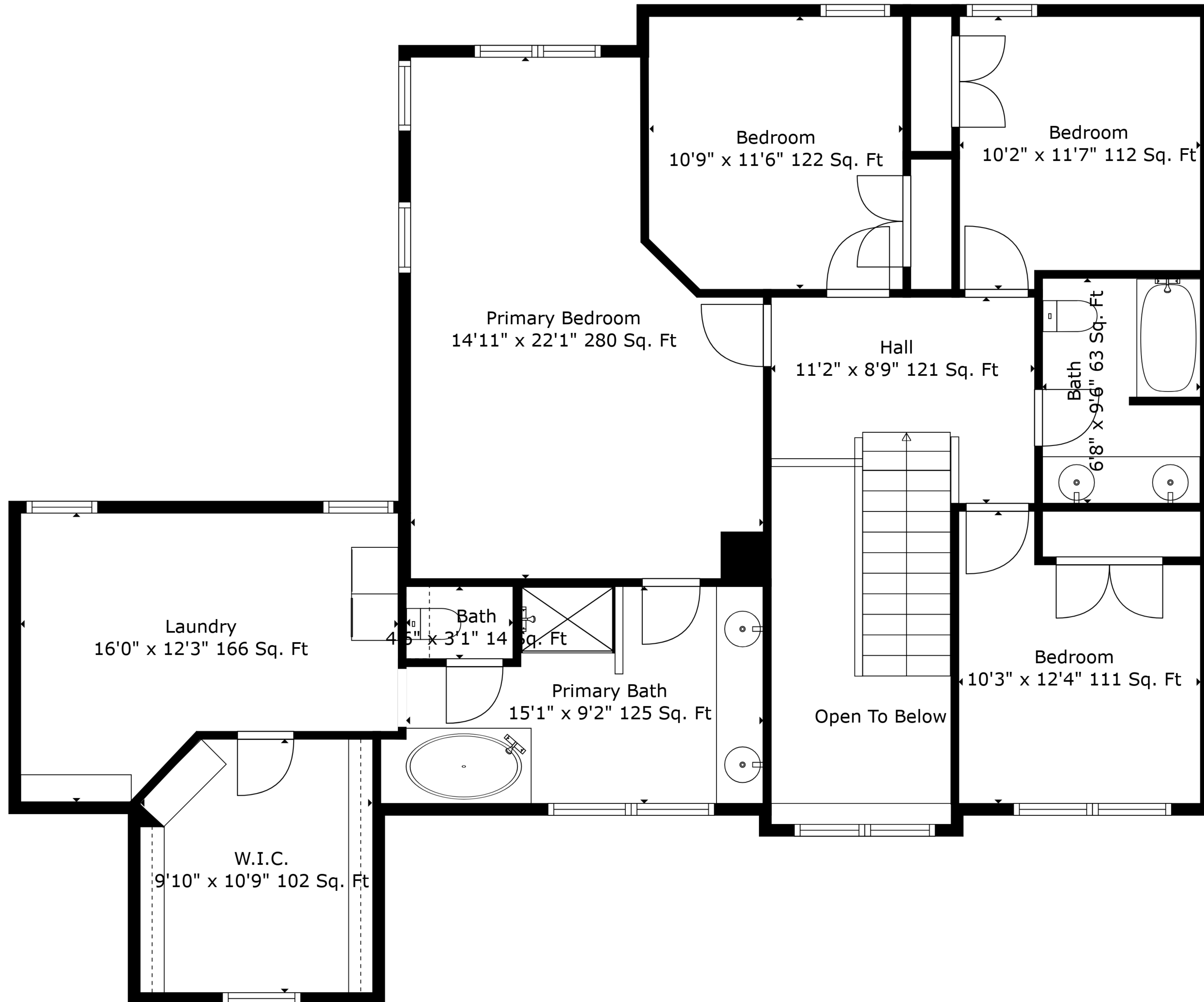


**TOTAL: 2363 sq. ft**

BELOW GROUND: 0 sq. ft, FLOOR 2: 1056 sq. ft, FLOOR 3: 1307 sq. ft

EXCLUDED AREAS: BASEMENT: 936 sq. ft, GARAGE: 400 sq. ft, OPEN TO BELOW: 79 sq. ft

Measurements Are Deemed Highly Reliable But Not Guaranteed.

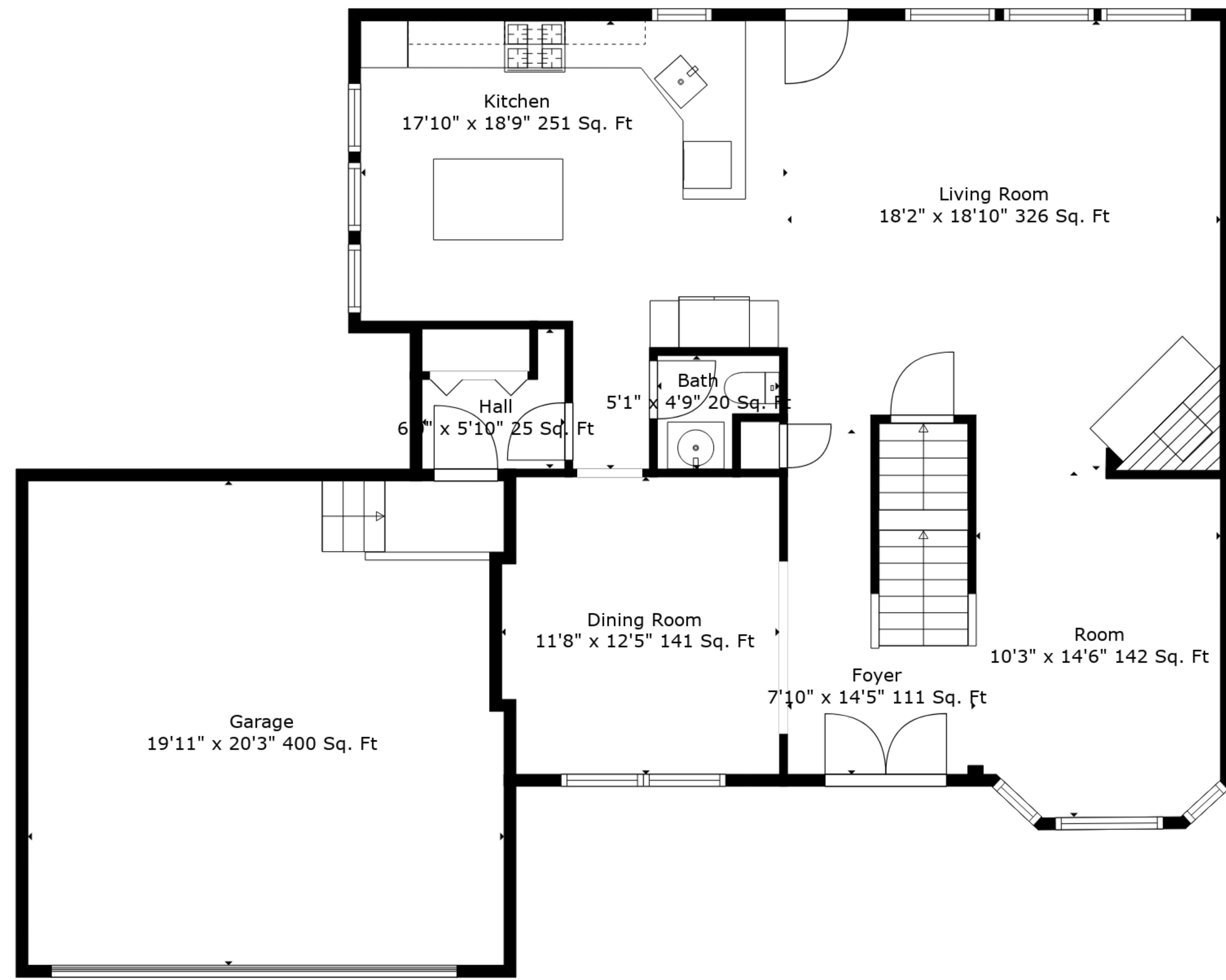


**TOTAL: 2363 sq. ft**

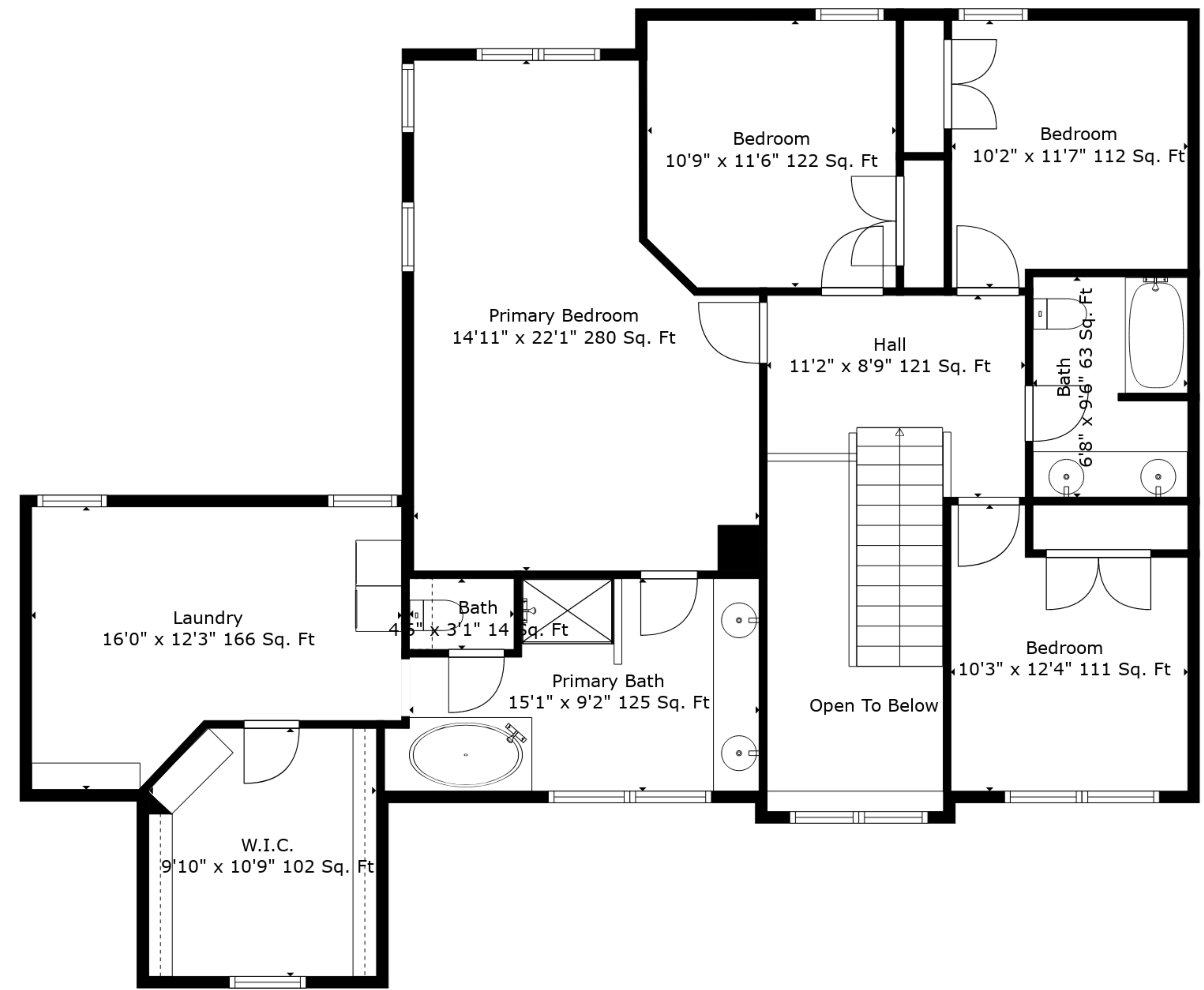
BELOW GROUND: 0 sq. ft, FLOOR 2: 1056 sq. ft, FLOOR 3: 1307 sq. ft

EXCLUDED AREAS: BASEMENT: 936 sq. ft, GARAGE: 400 sq. ft, OPEN TO BELOW: 79 sq. ft

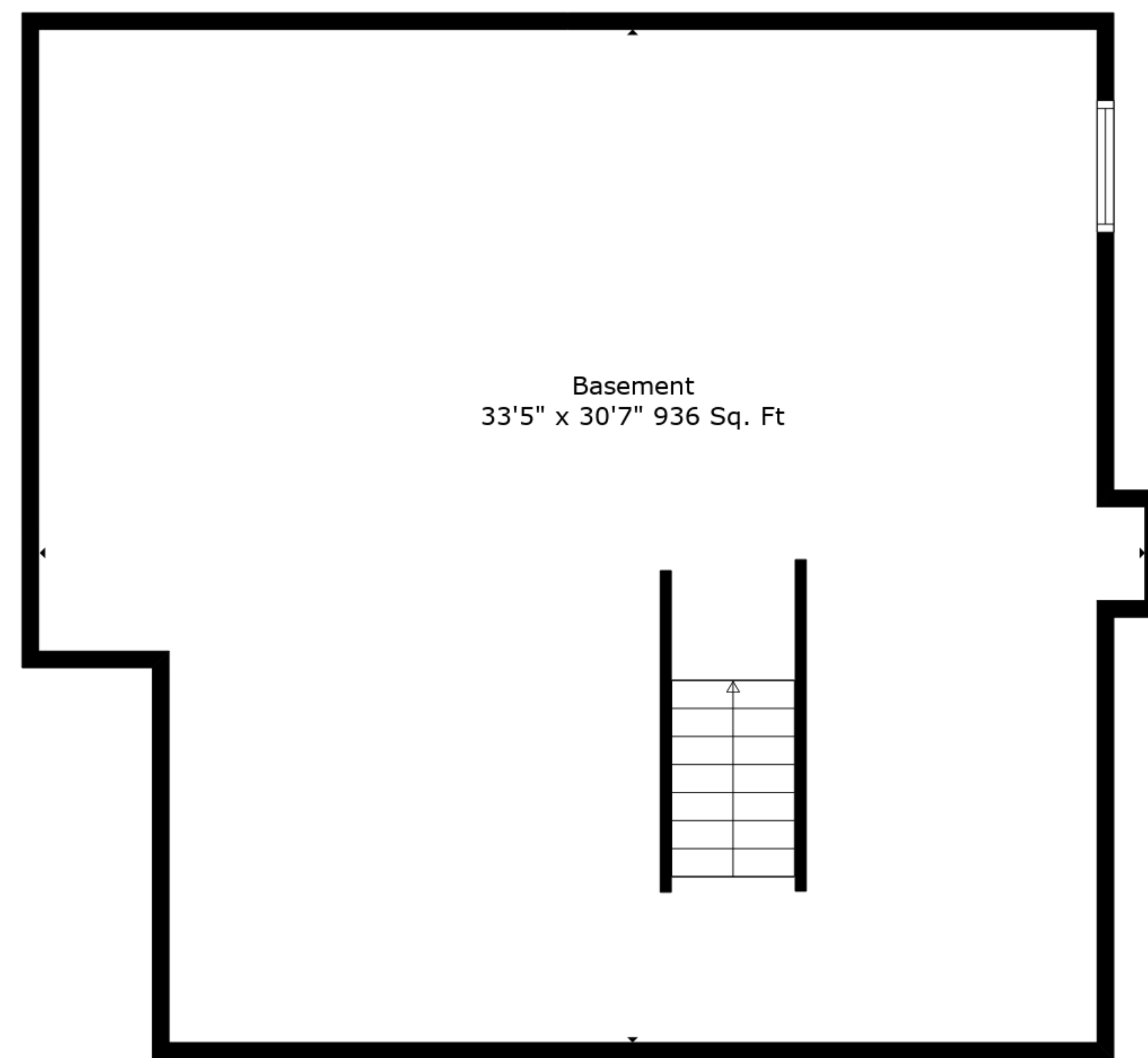
Measurements Are Deemed Highly Reliable But Not Guaranteed.



Floor 2



Floor 3



Floor 1

**TOTAL: 2363 sq. ft**  
 BELOW GROUND: 0 sq. ft, FLOOR 2: 1056 sq. ft, FLOOR 3: 1307 sq. ft  
 EXCLUDED AREAS: BASEMENT: 936 sq. ft, GARAGE: 400 sq. ft, OPEN TO BELOW: 79 sq. ft

Measurements Are Deemed Highly Reliable But Not Guaranteed.