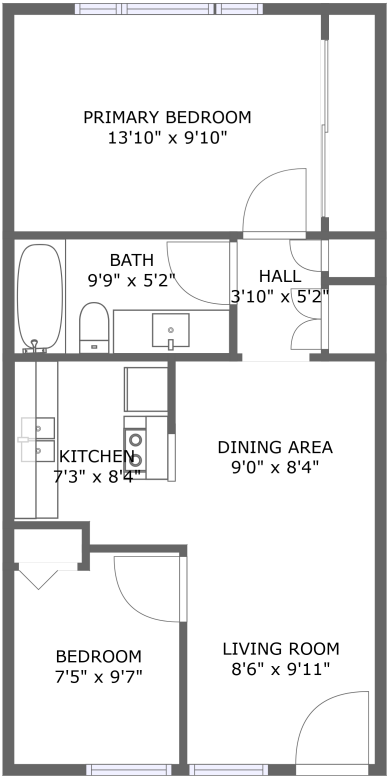


Home report

7075 Lanewood Ave #3,Los Angeles,CA,US



FLOOR 1

Total Area: 603 sq. ft

Floor 1: 603 sq. ft

Excluded:

Property summary

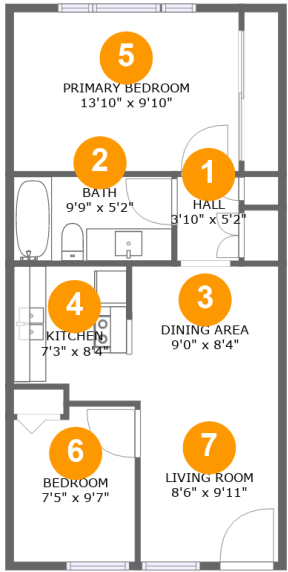
 **1** Floors

 **2** Bedrooms

 **1** Bathrooms

Home report

7075 Lanewood Ave #3,Los Angeles,CA,US

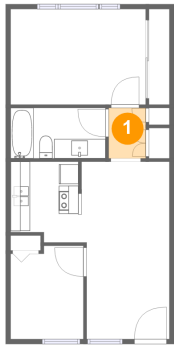


Room dimensions

Floor 1 Total:603sqft Excluded: 0sqft

#		Max Dimensions	sqft	Included
1	Hall	3'10" x 5'2"	20 sq. ft	Yes
2	Bath	9'9" x 5'2"	50 sq. ft	Yes
3	Dining Area	9'0" x 8'4"	75 sq. ft	Yes
4	Kitchen	7'3" x 8'4"	56 sq. ft	Yes
5	Primary Bedroom	13'10" x 9'10"	136 sq. ft	Yes
6	Bedroom	7'5" x 9'7"	69 sq. ft	Yes
7	Living Room	8'6" x 9'11"	84 sq. ft	Yes

1 Floor 1 - Hall



Max Dimensions: 3'10" x 5'2"  
Calculated Area: 20 sq. ft  
Included: Yes

Heated: Yes  
Finished: Yes  
Enclosed: Yes  
Contiguous: Yes  
Permitted: Yes  
Wet space: No  
Addition: No  
Conversion: No

2 Floor 1 - Bath



Max Dimensions: 9'9" x 5'2"  
Calculated Area: 50 sq. ft  
Included: Yes

Heated: Yes  
Finished: Yes  
Enclosed: Yes  
Contiguous: Yes  
Permitted: Yes  
Wet space: Yes  
Addition: No  
Conversion: No

3 Floor 1 - Dining Area



Max Dimensions: 9'0" x 8'4"  
Calculated Area: 75 sq. ft  
Included: Yes

Heated: Yes  
Finished: Yes  
Enclosed: Yes  
Contiguous: Yes  
Permitted: Yes  
Wet space: No  
Addition: No  
Conversion: No

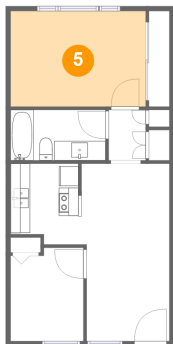
4 Floor 1 - Kitchen



Max Dimensions: 7'3" x 8'4"  
Calculated Area: 56 sq. ft  
Included: Yes

Heated: Yes  
Finished: Yes  
Enclosed: Yes  
Contiguous: Yes  
Permitted: Yes  
Wet space: No  
Addition: No  
Conversion: No

5 Floor 1 - Primary Bedroom



Max Dimensions: 13'10" x 9'10"  
Calculated Area: 136 sq. ft  
Included: Yes

Heated: Yes  
Finished: Yes  
Enclosed: Yes  
Contiguous: Yes  
Permitted: Yes  
Wet space: No  
Addition: No  
Conversion: No

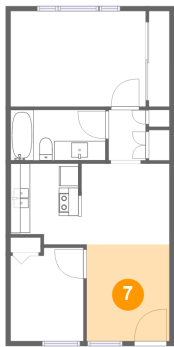
6 Floor 1 - Bedroom



Max Dimensions: 7'5" x 9'7"  
Calculated Area: 69 sq. ft  
Included: Yes

Heated: Yes  
Finished: Yes  
Enclosed: Yes  
Contiguous: Yes  
Permitted: Yes  
Wet space: No  
Addition: No  
Conversion: No

7 Floor 1 - Living Room



Max Dimensions: 8'6" x 9'11"  
Calculated Area: 84 sq. ft  
Included: Yes

Heated: Yes  
Finished: Yes  
Enclosed: Yes  
Contiguous: Yes  
Permitted: Yes  
Wet space: No  
Addition: No  
Conversion: No