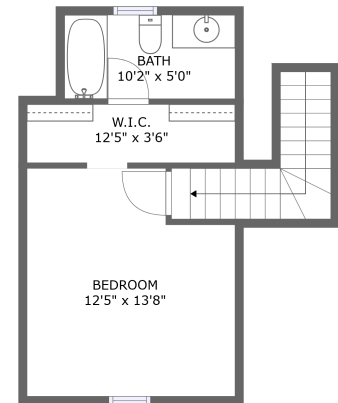
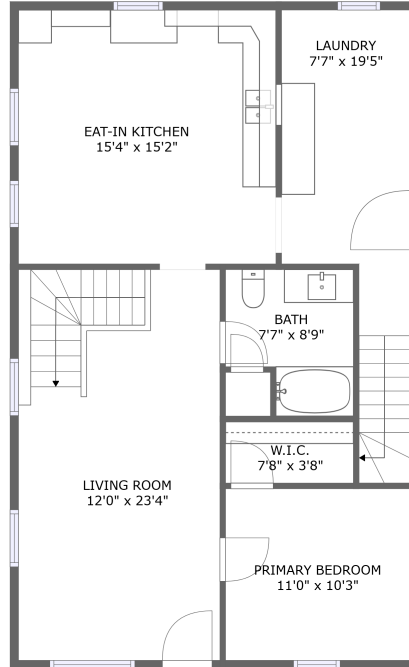
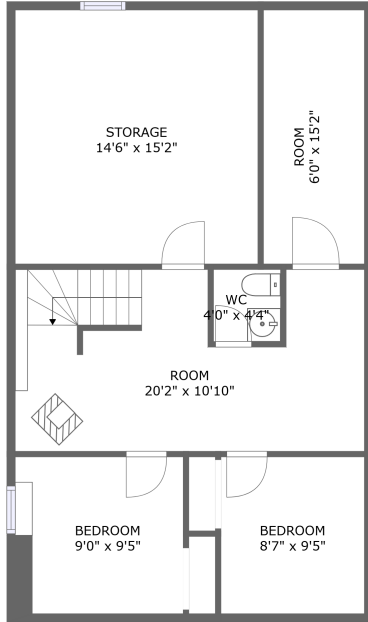



813 6th Ave, Belle Fourche, SD, US



Property summary

 **0** Garages

 **4** Bedrooms

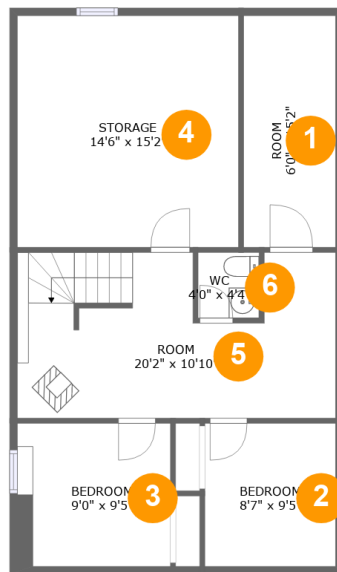
 **2** Bathrooms

 **1** Half baths

 **3** Floors

 **1,860** Gross living area sqft

 **2,138** Total sqft

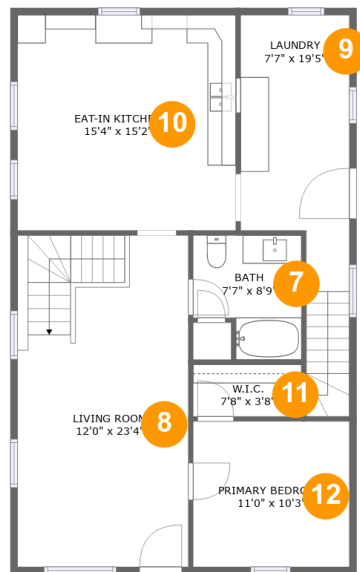
813 6th Ave,Belle Fourche,SD,US

Room dimensions

Floor 1

Total sqft: 811 Living area: 576

#		Dimensions	sqft	Counted as living area
1	Room	6'0" x 15'2"	92 sq. ft	Yes
2	Bedroom	8'7" x 9'5"	80 sq. ft	Yes
3	Bedroom	9'0" x 9'5"	89 sq. ft	Yes
4	Storage	14'6" x 15'2"	220 sq. ft	No
5	Room	20'2" x 10'10"	205 sq. ft	Yes
6	WC	4'0" x 4'4"	17 sq. ft	Yes

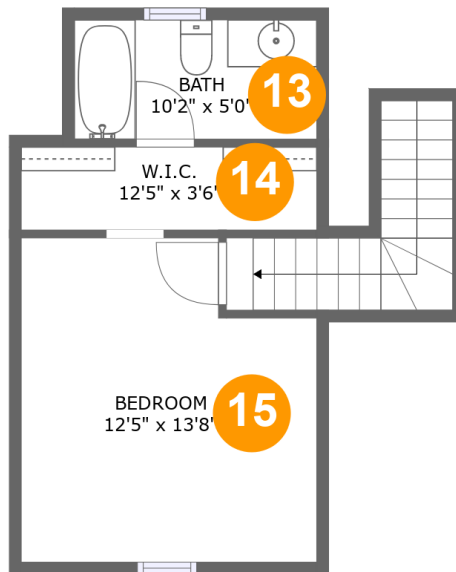
813 6th Ave, Belle Fourche, SD, US

Room dimensions

Floor 2

Total sqft: 973 Living area: 973

#		Dimensions	sqft	Counted as living area
7	Bath	7'7" x 8'9"	58 sq. ft	Yes
8	Living Room	12'0" x 23'4"	281 sq. ft	Yes
9	Laundry	7'7" x 19'5"	157 sq. ft	Yes
10	Eat-in Kitchen	15'4" x 15'2"	234 sq. ft	Yes
11	W.I.C.	7'8" x 3'8"	28 sq. ft	Yes
12	Primary Bedroom	11'0" x 10'3"	113 sq. ft	Yes

813 6th Ave, Belle Fourche, SD, US

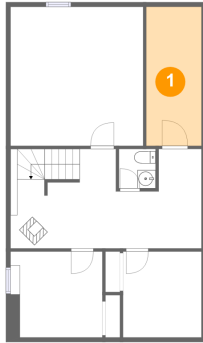
Room dimensions

Floor 3

Total sqft: 354 Living area: 311

#		Dimensions	sqft	Counted as living area
13	Bath	10'2" x 5'0"	47 sq. ft	Yes
14	W.I.C.	12'5" x 3'6"	39 sq. ft	Yes
15	Bedroom	12'5" x 13'8"	139 sq. ft	Yes

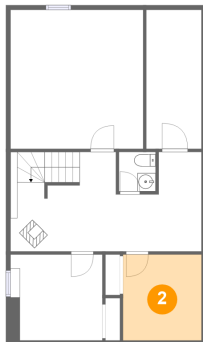
1 Floor 1 - Room



Dimensions: 6'0" x 15'2"
Area: 92 sq. ft
Counted as living area: Yes

Heated: Yes
Finished: Yes
Enclosed: Yes
Contiguous: Yes
Permitted: Yes
Wet space: No
Addition: No
Conversion: No

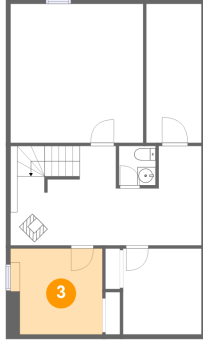
2 Floor 1 - Bedroom



Dimensions: 8'7" x 9'5"
Area: 80 sq. ft
Counted as living area: Yes

Heated: Yes
Finished: Yes
Enclosed: Yes
Contiguous: Yes
Permitted: Yes
Wet space: No
Addition: No
Conversion: No

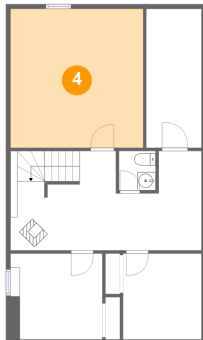
3 Floor 1 - Bedroom



Dimensions: 9'0" x 9'5"
Area: 89 sq. ft
Counted as living area: Yes

Heated: Yes
Finished: Yes
Enclosed: Yes
Contiguous: Yes
Permitted: Yes
Wet space: No
Addition: No
Conversion: No

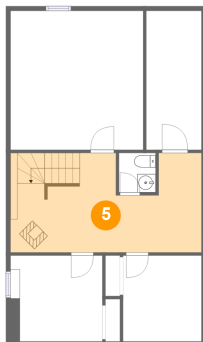
4 Floor 1 - Storage



Dimensions: 14'6" x 15'2"
Area: 220 sq. ft
Counted as living area: No

Heated: No
Finished: No
Enclosed: No
Contiguous: Yes
Permitted: Yes
Wet space: No
Addition: No
Conversion: No

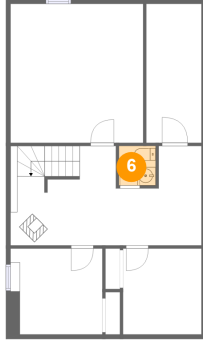
5 Floor 1 - Room



Dimensions: 20'2" x 10'10"
Area: 205 sq. ft
Counted as living area: Yes

Heated: Yes
Finished: Yes
Enclosed: Yes
Contiguous: Yes
Permitted: Yes
Wet space: No
Addition: No
Conversion: No

6 Floor 1 - WC



Dimensions: 4'0" x 4'4"
Area: 17 sq. ft
Counted as living area: Yes

Heated: Yes
Finished: Yes
Enclosed: Yes
Contiguous: Yes
Permitted: Yes
Wet space: Yes
Addition: No
Conversion: No

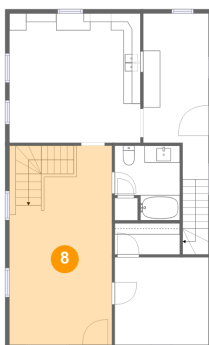
7 Floor 2 - Bath



Dimensions: 7'7" x 8'9"
Area: 58 sq. ft
Counted as living area: Yes

Heated: Yes
Finished: Yes
Enclosed: Yes
Contiguous: Yes
Permitted: Yes
Wet space: Yes
Addition: No
Conversion: No

8 Floor 2 - Living Room



Dimensions: 12'0" x 23'4"
Area: 281 sq. ft
Counted as living area: Yes

Heated: Yes
Finished: Yes
Enclosed: Yes
Contiguous: Yes
Permitted: Yes
Wet space: No
Addition: No
Conversion: No

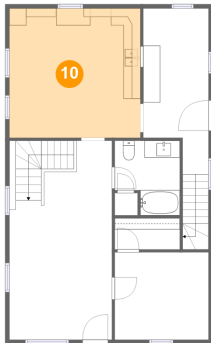
9 Floor 2 - Laundry



Dimensions: 7'7" x 19'5"
Area: 157 sq. ft
Counted as living area: Yes

Heated: Yes
Finished: Yes
Enclosed: Yes
Contiguous: Yes
Permitted: Yes
Wet space: No
Addition: No
Conversion: No

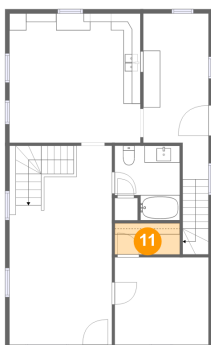
10 Floor 2 - Eat-in Kitchen



Dimensions: 15'4" x 15'2"
Area: 234 sq. ft
Counted as living area: Yes

Heated: Yes
Finished: Yes
Enclosed: Yes
Contiguous: Yes
Permitted: Yes
Wet space: No
Addition: No
Conversion: No

11 Floor 2 - W.I.C.

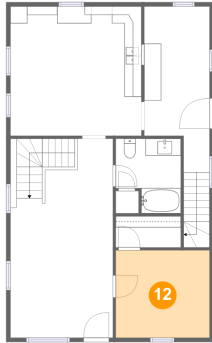


Dimensions: 7'8" x 3'8"
Area: 28 sq. ft
Counted as living area: Yes

Heated: Yes
Finished: Yes
Enclosed: Yes
Contiguous: Yes
Permitted: Yes
Wet space: No
Addition: No
Conversion: No

813 6th Ave, Belle Fourche, SD, US

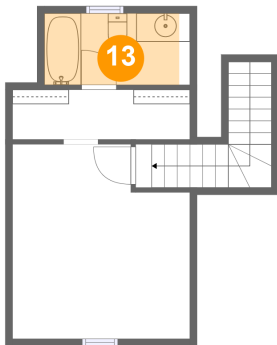
12 Floor 2 - Primary Bedroom



Dimensions: 11'0" x 10'3"
Area: 113 sq. ft
Counted as living area: Yes

Heated: Yes
Finished: Yes
Enclosed: Yes
Contiguous: Yes
Permitted: Yes
Wet space: No
Addition: No
Conversion: No

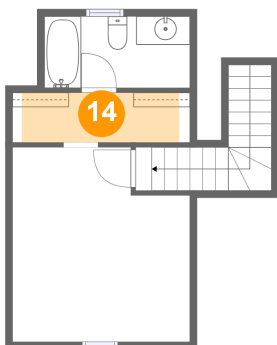
13 Floor 3 - Bath



Dimensions: 10'2" x 5'0"
Area: 47 sq. ft
Counted as living area: Yes

Heated: Yes
Finished: Yes
Enclosed: Yes
Contiguous: Yes
Permitted: Yes
Wet space: Yes
Addition: No
Conversion: No

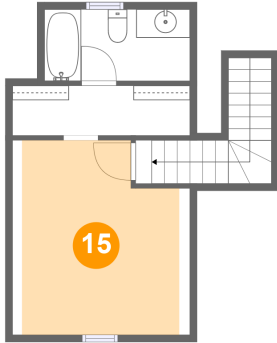
14 Floor 3 - W.I.C.



Dimensions: 12'5" x 3'6"
Area: 39 sq. ft
Counted as living area: Yes

Heated: Yes
Finished: Yes
Enclosed: Yes
Contiguous: Yes
Permitted: Yes
Wet space: No
Addition: No
Conversion: No

15 Floor 3 - Bedroom



Dimensions: 12'5" x 13'8"
Area: 139 sq. ft
Counted as living area: Yes

Heated: Yes
Finished: Yes
Enclosed: Yes
Contiguous: Yes
Permitted: Yes
Wet space: No
Addition: No
Conversion: No