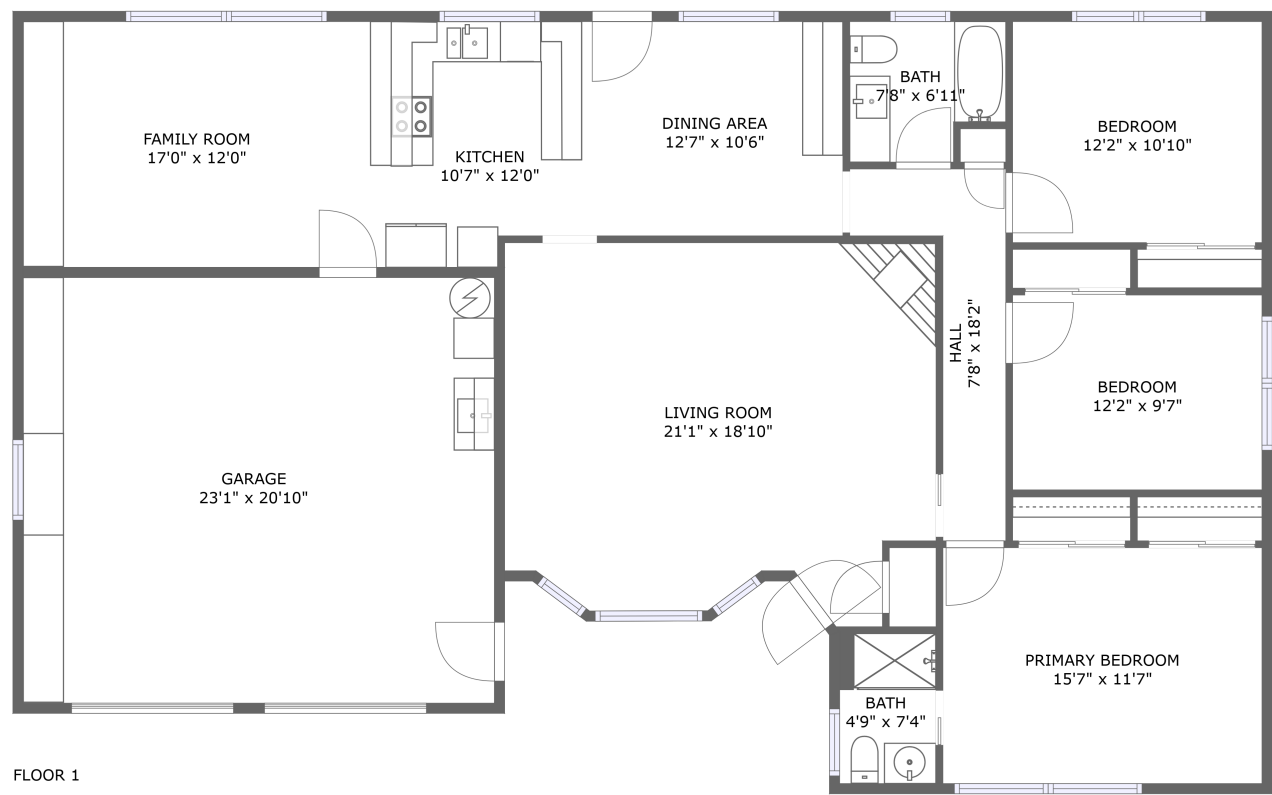


Home report

8830 Southwest 56th Avenue, Ashcreek, Portland, Multnomah County, Oregon, United States, 97219



Total Area: 1516 sq. ft

Floor 1: 1516 sq. ft

Excluded: Garage 480 sq. ft, Walls: 124 sq. ft

Property summary

1 Floors

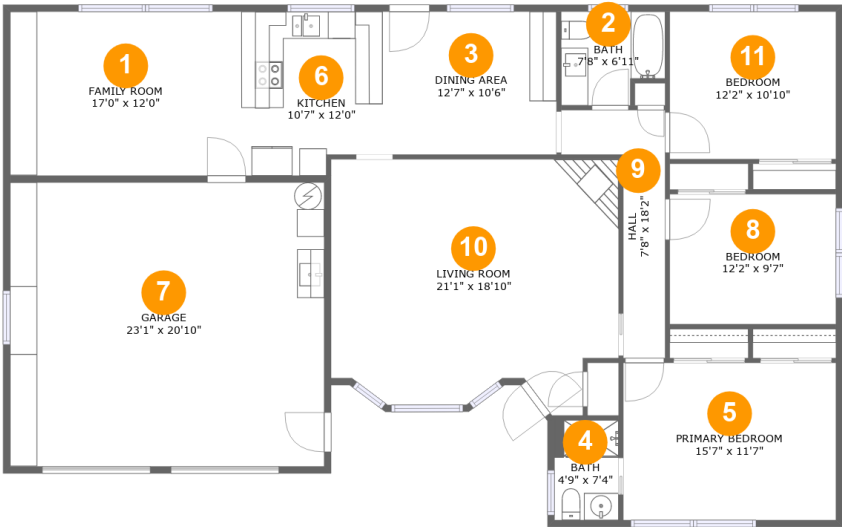
3 Bedrooms

2 Bathrooms

1 Garages

Home report

8830 Southwest 56th Avenue, Ashcreek, Portland, Multnomah County, Oregon, United States, 97219



Room dimensions

Floor 1 Total:1516sqft Excluded: 480sqft

#		Max Dimensions	sqft	Included
1	Family Room	17'0" x 12'0"	205 sq. ft	Yes
2	Bath	7'8" x 6'11"	48 sq. ft	Yes
3	Dining Area	12'7" x 10'6"	132 sq. ft	Yes
4	Bath	4'9" x 7'4"	35 sq. ft	Yes
5	Primary Bedroom	15'7" x 11'7"	180 sq. ft	Yes
6	Kitchen	10'7" x 12'0"	120 sq. ft	Yes
7	Garage	23'1" x 20'10"	480 sq. ft	No
8	Bedroom	12'2" x 9'7"	116 sq. ft	Yes
9	Hall	7'8" x 18'2"	71 sq. ft	Yes
10	Living Room	21'1" x 18'10"	361 sq. ft	Yes
11	Bedroom	12'2" x 10'10"	132 sq. ft	Yes

1 Floor 1 - Family Room



Max Dimensions: 17'0" x 12'0"
Calculated Area: 205 sq. ft
Included: Yes

Heated: Yes
Finished: Yes
Enclosed: Yes
Contiguous: Yes
Permitted: Yes
Wet space: No
Addition: No
Conversion: No

2 Floor 1 - Bath

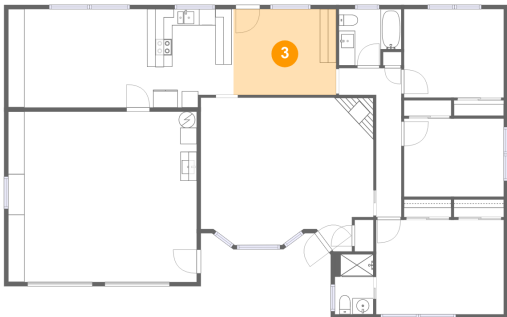


Max Dimensions: 7'8" x 6'11"
Calculated Area: 48 sq. ft
Included: Yes

Heated: Yes
Finished: Yes
Enclosed: Yes
Contiguous: Yes
Permitted: Yes
Wet space: Yes
Addition: No
Conversion: No

8830 Southwest 56th Avenue, Ashcreek, Portland, Multnomah County, Oregon, United States, 97219

3 Floor 1 - Dining Area



Max Dimensions: 12'7" x 10'6"
Calculated Area: 132 sq. ft
Included: Yes

Heated: Yes
Finished: Yes
Enclosed: Yes
Contiguous: Yes
Permitted: Yes
Wet space: No
Addition: No
Conversion: No

4 Floor 1 - Bath



Max Dimensions: 4'9" x 7'4"
Calculated Area: 35 sq. ft
Included: Yes

Heated: Yes
Finished: Yes
Enclosed: Yes
Contiguous: Yes
Permitted: Yes
Wet space: Yes
Addition: No
Conversion: No

5 Floor 1 - Primary Bedroom

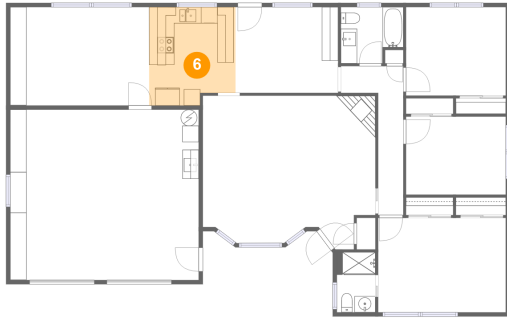


Max Dimensions: 15'7" x 11'7"
Calculated Area: 180 sq. ft
Included: Yes

Heated: Yes
Finished: Yes
Enclosed: Yes
Contiguous: Yes
Permitted: Yes
Wet space: No
Addition: No
Conversion: No

8830 Southwest 56th Avenue, Ashcreek, Portland, Multnomah
County, Oregon, United States, 97219

6 Floor 1 - Kitchen



Max Dimensions: 10'7" x 12'0"
Calculated Area: 120 sq. ft
Included: Yes

Heated: Yes
Finished: Yes
Enclosed: Yes
Contiguous: Yes
Permitted: Yes
Wet space: No
Addition: No
Conversion: No

7 Floor 1 - Garage



Max Dimensions: 23'1" x 20'10"
Calculated Area: 480 sq. ft
Included: No

Heated: No
Finished: No
Enclosed: Yes
Contiguous: Yes
Permitted: Yes
Wet space: No
Addition: No
Conversion: No

8 Floor 1 - Bedroom

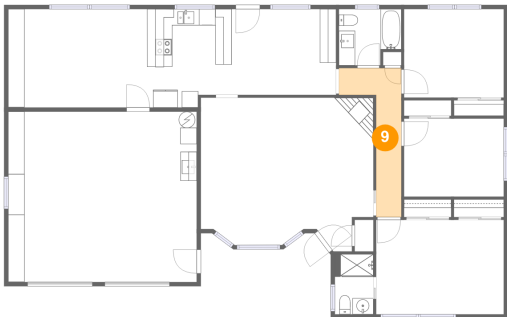


Max Dimensions: 12'2" x 9'7"
Calculated Area: 116 sq. ft
Included: Yes

Heated: Yes
Finished: Yes
Enclosed: Yes
Contiguous: Yes
Permitted: Yes
Wet space: No
Addition: No
Conversion: No

8830 Southwest 56th Avenue, Ashcreek, Portland, Multnomah County, Oregon, United States, 97219

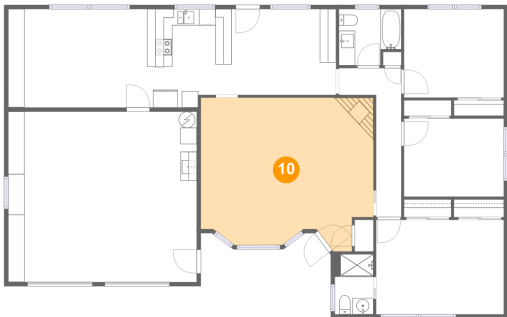
9 Floor 1 - Hall



Max Dimensions: 7'8" x 18'2"
Calculated Area: 71 sq. ft
Included: Yes

Heated: Yes
Finished: Yes
Enclosed: Yes
Contiguous: Yes
Permitted: Yes
Wet space: No
Addition: No
Conversion: No

10 Floor 1 - Living Room



Max Dimensions: 21'1" x 18'10"
Calculated Area: 361 sq. ft
Included: Yes

Heated: Yes
Finished: Yes
Enclosed: Yes
Contiguous: Yes
Permitted: Yes
Wet space: No
Addition: No
Conversion: No

11 Floor 1 - Bedroom



Max Dimensions: 12'2" x 10'10"
Calculated Area: 132 sq. ft
Included: Yes

Heated: Yes
Finished: Yes
Enclosed: Yes
Contiguous: Yes
Permitted: Yes
Wet space: No
Addition: No
Conversion: No