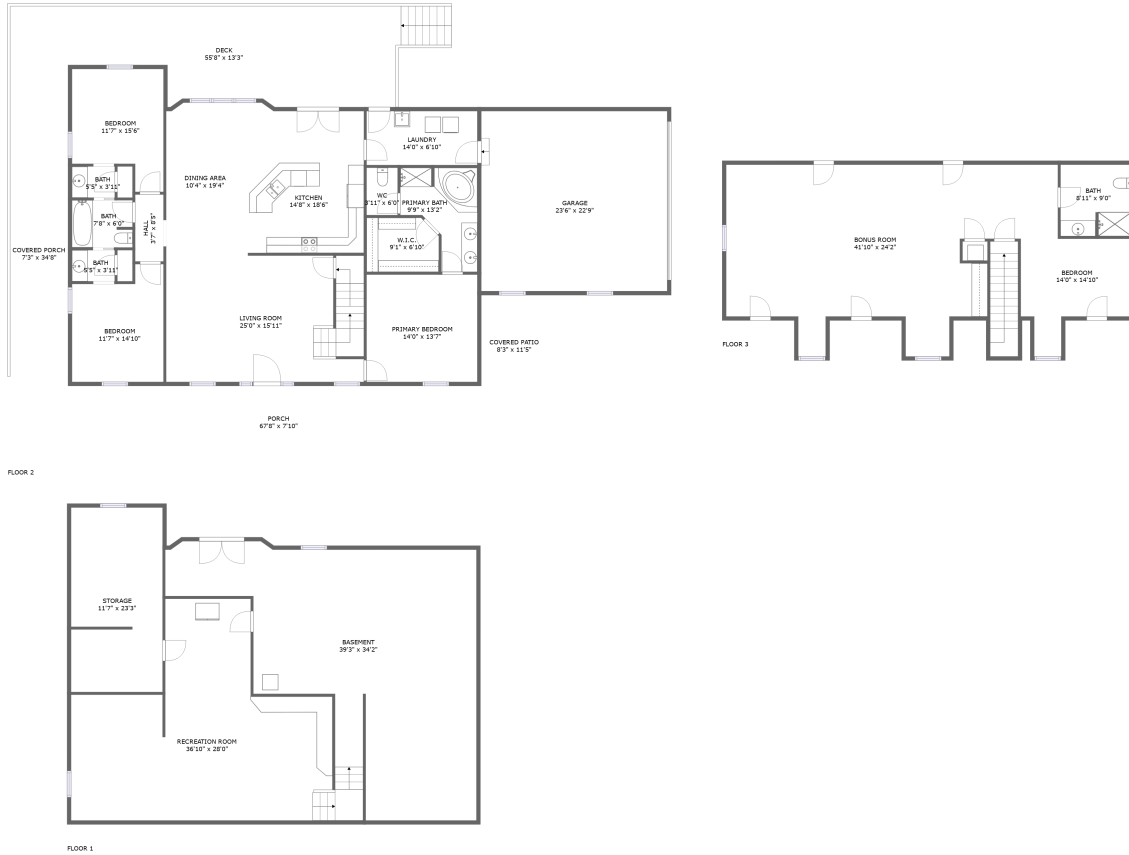


4953 Philpott Drive, Bassett, Henry County, Virginia, United States, 24055



Property Summary



3 floors



4 bedrooms



3 bathrooms



7,010 total sqft

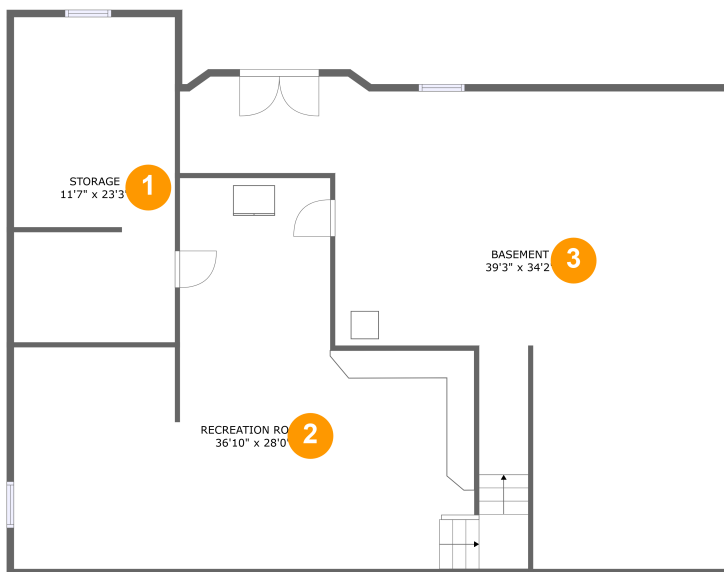


1 garages



3,066 Gross Living Area sqft

4953 Philpott Drive, Bassett, Henry County, Virginia, United States, 24055



Room Dimensions

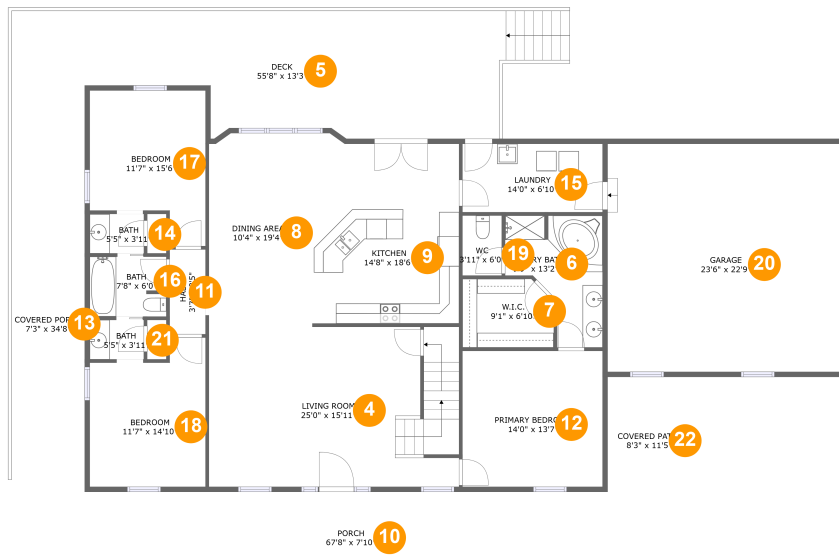
Floor 1

Total sqft: 1914

Living area: 0

#	Room name	Dimensions	Area (sqft)	Counted as Living Area
1	Storage	11'7" x 23'3"	266 sq. ft	No
2	Recreation Room	36'10" x 28'0"	675 sq. ft	No
3	Basement	39'3" x 34'2"	846 sq. ft	No

4953 Philpott Drive, Bassett, Henry County, Virginia, United States, 24055



Room Dimensions

Floor 2

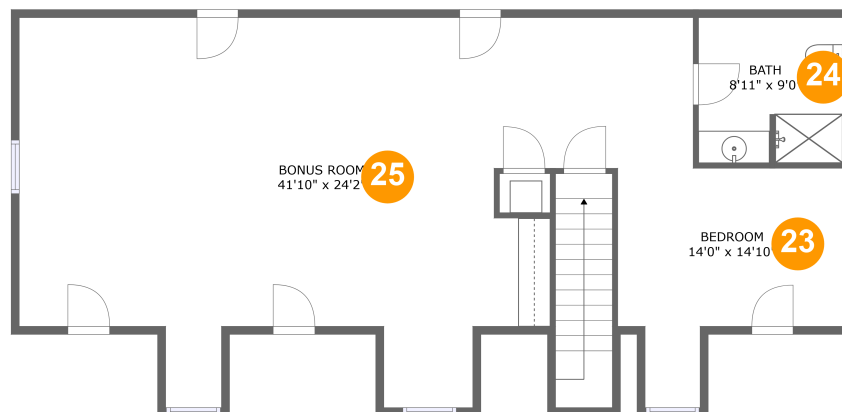
Total sqft: 3944

Living area: 1914

#	Room name	Dimensions	Area (sqft)	Counted as Living Area
4	Living Room	25'0" x 15'11"	394 sq. ft	Yes
5	Deck	55'8" x 13'3"	580 sq. ft	Yes
6	Primary Bath	9'9" x 13'2"	93 sq. ft	Yes
7	W.i.c.	9'1" x 6'10"	60 sq. ft	Yes
8	Dining Area	10'4" x 19'4"	198 sq. ft	Yes
9	Kitchen	14'8" x 18'6"	265 sq. ft	Yes
10	Porch	67'8" x 7'10"	534 sq. ft	No
11	Hall	3'7" x 8'5"	30 sq. ft	Yes
12	Primary Bedroom	14'0" x 13'7"	189 sq. ft	Yes
13	Covered Porch	7'3" x 34'8"	253 sq. ft	No
14	Bath	5'5" x 3'11"	21 sq. ft	Yes

**4953 Philpott Drive, Bassett, Henry County,
Virginia, United States, 24055**

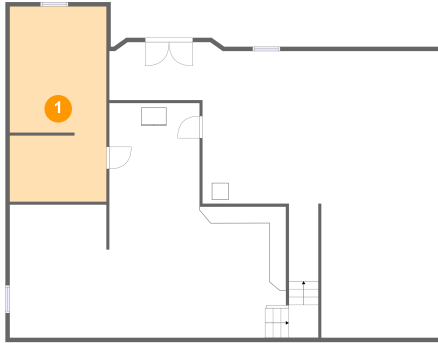
#	Room name	Dimensions	Area (sqft)	Counted as Living Area
15	Laundry	14'0" x 6'10"	95 sq. ft	Yes
16	Bath	7'8" x 6'0"	45 sq. ft	Yes
17	Bedroom	11'7" x 15'6"	151 sq. ft	Yes
18	Bedroom	11'7" x 14'10"	152 sq. ft	Yes
19	Wc	3'11" x 6'0"	23 sq. ft	Yes
20	Garage	23'6" x 22'9"	533 sq. ft	No
21	Bath	5'5" x 3'11"	21 sq. ft	Yes
22	Covered Patio	8'3" x 11'5"	95 sq. ft	No

**4953 Philpott Drive, Bassett, Henry County,
Virginia, United States, 24055****Room Dimensions****Floor 3****Total sqft: 1152****Living area: 1152**

#	Room name	Dimensions	Area (sqft)	Counted as Living Area
23	Bedroom	14'0" x 14'10"	154 sq. ft	Yes
24	Bath	8'11" x 9'0"	80 sq. ft	Yes
25	Bonus Room	41'10" x 24'2"	749 sq. ft	Yes

4953 Philpott Drive, Bassett, Henry County, Virginia, United States, 24055

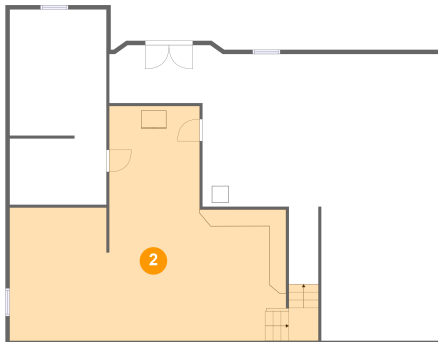
1 Floor 1 - Storage



Dimensions: 11'7" x 23'3"
Area: 266 sq. ft
Counted as Living Area: No

Heated: No
Finished: No
Enclosed: No
Contiguous: Yes
Permitted: Yes
Wet Space: No
Addition: No
Conversion: No

2 Floor 1 - Recreation Room

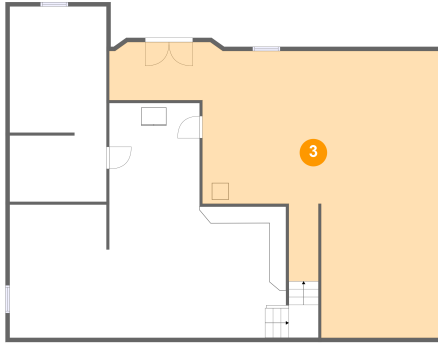


Dimensions: 36'10" x 28'0"
Area: 675 sq. ft
Counted as Living Area: No

Heated: Yes
Finished: Yes
Enclosed: Yes
Contiguous: No
Permitted: Yes
Wet Space: No
Addition: No
Conversion: No

4953 Philpott Drive, Bassett, Henry County, Virginia, United States, 24055

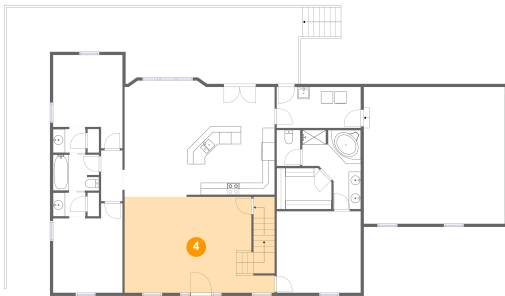
3 Floor 1 - Basement



Dimensions: 39'3" x 34'2"
Area: 846 sq. ft
Counted as Living Area: No

Heated: No
Finished: No
Enclosed: Yes
Contiguous: Yes
Permitted: Yes
Wet Space: No
Addition: No
Conversion: No

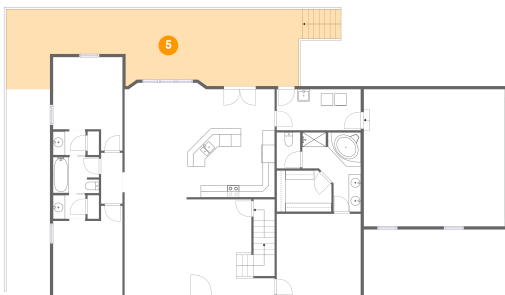
4 Floor 2 - Living Room



Dimensions: 25'0" x 15'11"
Area: 394 sq. ft
Counted as Living Area: Yes

Heated: Yes
Finished: Yes
Enclosed: Yes
Contiguous: Yes
Permitted: Yes
Wet Space: No
Addition: No
Conversion: No

5 Floor 2 - Deck



Dimensions: 55'8" x 13'3"
Area: 580 sq. ft
Counted as Living Area: Yes

Heated: No
Finished: Yes
Enclosed: No
Contiguous: Yes
Permitted: Yes
Wet Space: No
Addition: No
Conversion: No

4953 Philpott Drive, Bassett, Henry County, Virginia, United States, 24055

6 Floor 2 - Primary Bath



Dimensions: 9'9" x 13'2"
Area: 93 sq. ft
Counted as Living Area:
Yes

Heated: Yes
Finished: Yes
Enclosed: Yes
Contiguous:
Yes
Permitted: Yes
Wet Space: Yes
Addition: No
Conversion: No

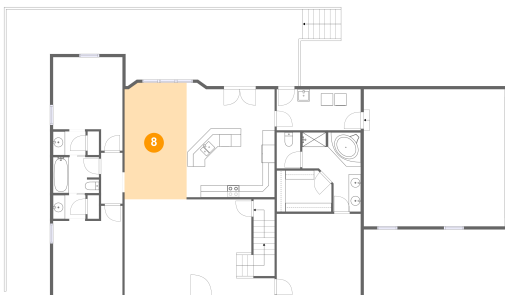
7 Floor 2 - W.i.c.



Dimensions: 9'1" x 6'10"
Area: 60 sq. ft
Counted as Living Area:
Yes

Heated: Yes
Finished: Yes
Enclosed: Yes
Contiguous:
Yes
Permitted: Yes
Wet Space: No
Addition: No
Conversion: No

8 Floor 2 - Dining Area

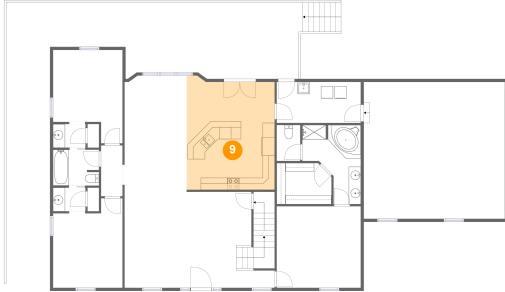


Dimensions: 10'4" x 19'4"
Area: 198 sq. ft
Counted as Living Area:
Yes

Heated: Yes
Finished: Yes
Enclosed: Yes
Contiguous:
Yes
Permitted: Yes
Wet Space: No
Addition: No
Conversion: No

4953 Philpott Drive, Bassett, Henry County, Virginia, United States, 24055

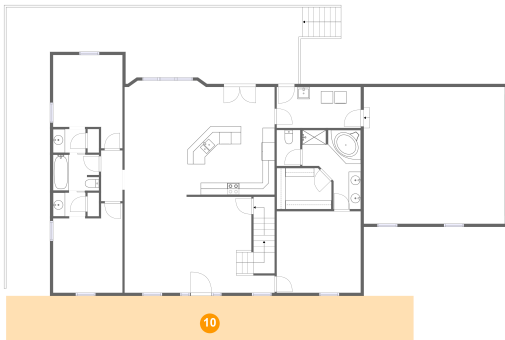
9 Floor 2 - Kitchen



Dimensions: 14'8" x 18'6"
Area: 265 sq. ft
Counted as Living Area:
Yes

Heated: Yes
Finished: Yes
Enclosed: Yes
Contiguous:
Yes
Permitted: Yes
Wet Space: No
Addition: No
Conversion: No

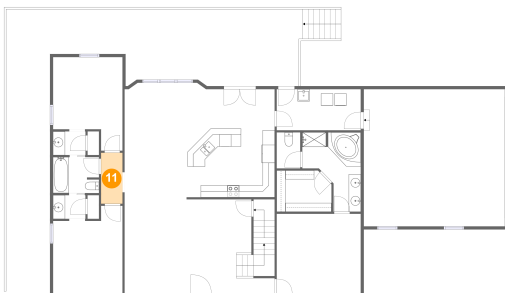
10 Floor 2 - Porch



Dimensions: 67'8" x 7'10"
Area: 534 sq. ft
Counted as Living Area: No

Heated: No
Finished: Yes
Enclosed: No
Contiguous: Yes
Permitted: Yes
Wet Space: No
Addition: No
Conversion: No

11 Floor 2 - Hall

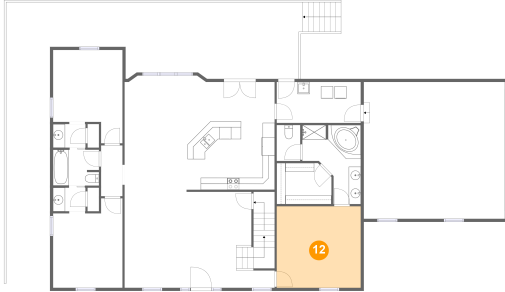


Dimensions: 3'7" x 8'5"
Area: 30 sq. ft
Counted as Living Area:
Yes

Heated: Yes
Finished: Yes
Enclosed: Yes
Contiguous:
Yes
Permitted: Yes
Wet Space: No
Addition: No
Conversion: No

4953 Philpott Drive, Bassett, Henry County, Virginia, United States, 24055

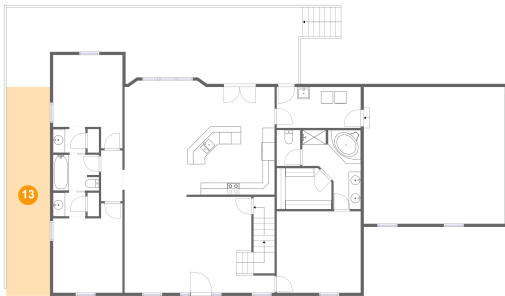
12 Floor 2 - Primary Bedroom



Dimensions: 14'0" x 13'7"
Area: 189 sq. ft
Counted as Living Area:
Yes

Heated: Yes
Finished: Yes
Enclosed: Yes
Contiguous:
Yes
Permitted: Yes
Wet Space: No
Addition: No
Conversion: No

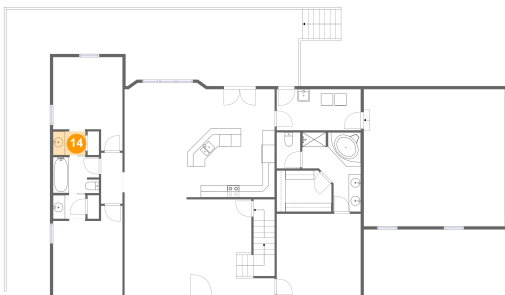
13 Floor 2 - Covered Porch



Dimensions: 7'3" x 34'8"
Area: 253 sq. ft
Counted as Living Area: No

Heated: No
Finished: Yes
Enclosed: No
Contiguous: Yes
Permitted: Yes
Wet Space: No
Addition: No
Conversion: No

14 Floor 2 - Bath

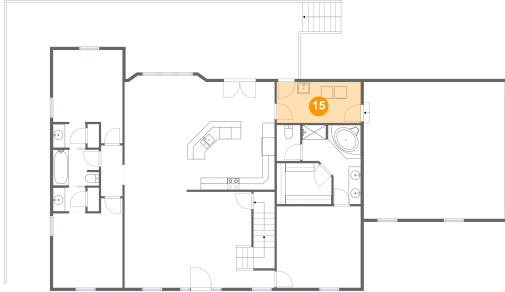


Dimensions: 5'5" x 3'11"
Area: 21 sq. ft
Counted as Living Area:
Yes

Heated: Yes
Finished: Yes
Enclosed: Yes
Contiguous:
Yes
Permitted: Yes
Wet Space: Yes
Addition: No
Conversion: No

4953 Philpott Drive, Bassett, Henry County, Virginia, United States, 24055

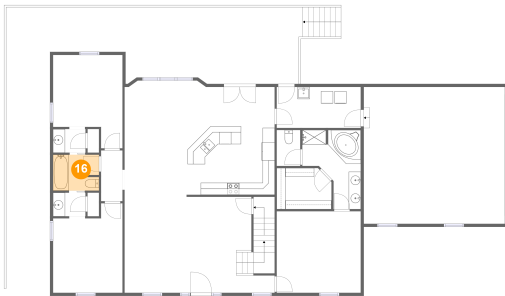
15 Floor 2 - Laundry



Dimensions: 14'0" x 6'10"
Area: 95 sq. ft
Counted as Living Area:
Yes

Heated: Yes
Finished: Yes
Enclosed: Yes
Contiguous:
Yes
Permitted: Yes
Wet Space: No
Addition: No
Conversion: No

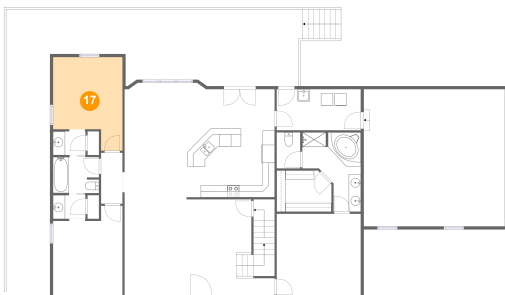
16 Floor 2 - Bath



Dimensions: 7'8" x 6'0"
Area: 45 sq. ft
Counted as Living Area:
Yes

Heated: Yes
Finished: Yes
Enclosed: Yes
Contiguous:
Yes
Permitted: Yes
Wet Space: Yes
Addition: No
Conversion: No

17 Floor 2 - Bedroom

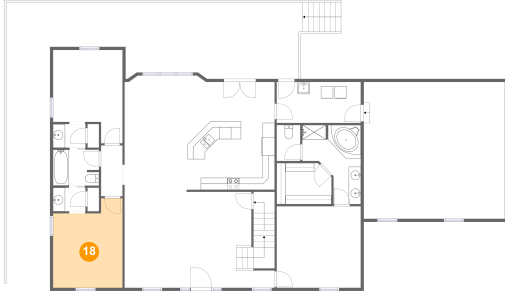


Dimensions: 11'7" x 15'6"
Area: 151 sq. ft
Counted as Living Area:
Yes

Heated: Yes
Finished: Yes
Enclosed: Yes
Contiguous:
Yes
Permitted: Yes
Wet Space: No
Addition: No
Conversion: No

**4953 Philpott Drive, Bassett, Henry County,
Virginia, United States, 24055**

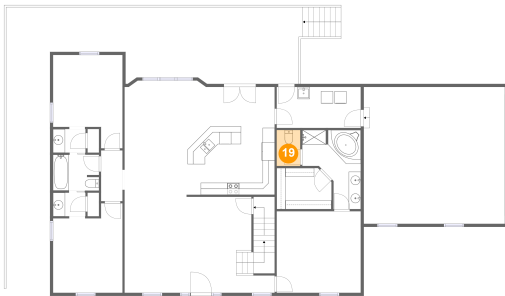
18 Floor 2 - Bedroom



Dimensions: 11'7" x 14'10"
Area: 152 sq. ft
Counted as Living Area:
Yes

Heated: Yes
Finished: Yes
Enclosed: Yes
Contiguous:
Yes
Permitted: Yes
Wet Space: No
Addition: No
Conversion: No

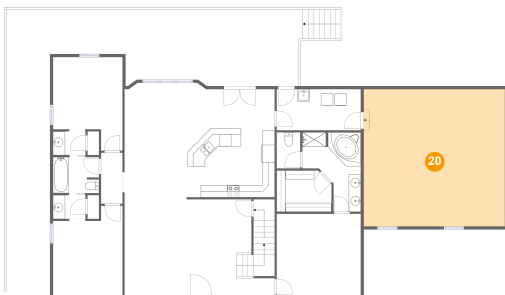
19 Floor 2 - Wc



Dimensions: 3'11" x 6'0"
Area: 23 sq. ft
Counted as Living Area:
Yes

Heated: Yes
Finished: Yes
Enclosed: Yes
Contiguous:
Yes
Permitted: Yes
Wet Space: Yes
Addition: No
Conversion: No

20 Floor 2 - Garage

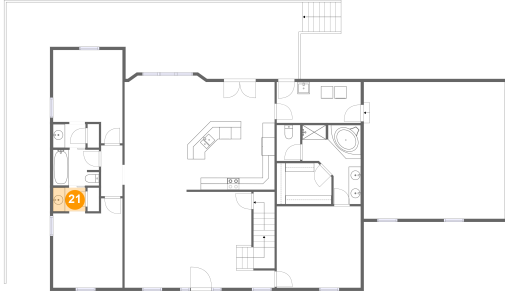


Dimensions: 23'6" x 22'9"
Area: 533 sq. ft
Counted as Living Area: No

Heated: No
Finished: No
Enclosed: Yes
Contiguous: Yes
Permitted: Yes
Wet Space: No
Addition: No
Conversion: No

4953 Philpott Drive, Bassett, Henry County, Virginia, United States, 24055

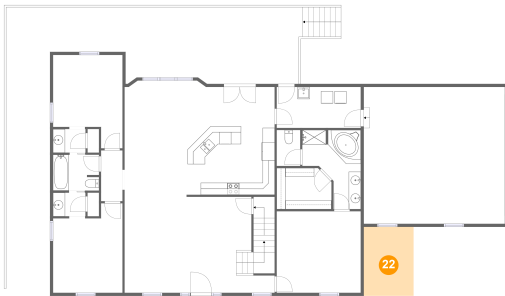
21 Floor 2 - Bath



Dimensions: 5'5" x 3'11"
Area: 21 sq. ft
Counted as Living Area:
Yes

Heated: Yes
Finished: Yes
Enclosed: Yes
Contiguous:
Yes
Permitted: Yes
Wet Space: Yes
Addition: No
Conversion: No

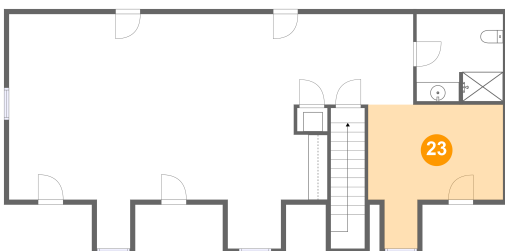
22 Floor 2 - Covered Patio



Dimensions: 8'3" x 11'5"
Area: 95 sq. ft
Counted as Living Area: No

Heated: No
Finished: Yes
Enclosed: No
Contiguous: Yes
Permitted: Yes
Wet Space: No
Addition: No
Conversion: No

23 Floor 3 - Bedroom

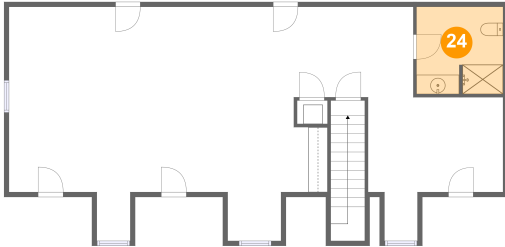


Dimensions: 14'0" x 14'10"
Area: 154 sq. ft
Counted as Living Area:
Yes

Heated: Yes
Finished: Yes
Enclosed: Yes
Contiguous:
Yes
Permitted: Yes
Wet Space: No
Addition: No
Conversion: No

**4953 Philpott Drive, Bassett, Henry County,
Virginia, United States, 24055**

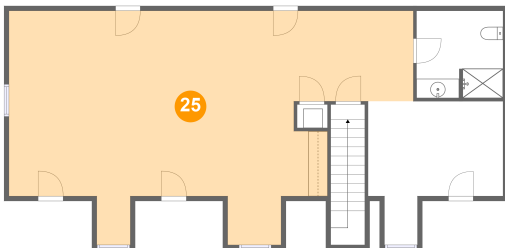
24 Floor 3 - Bath



Dimensions: 8'11" x 9'0"
Area: 80 sq. ft
Counted as Living Area:
Yes

Heated: Yes
Finished: Yes
Enclosed: Yes
Contiguous:
Yes
Permitted: Yes
Wet Space: Yes
Addition: No
Conversion: No

25 Floor 3 - Bonus Room



Dimensions: 41'10" x 24'2"
Area: 749 sq. ft
Counted as Living Area:
Yes

Heated: Yes
Finished: Yes
Enclosed: Yes
Contiguous:
Yes
Permitted: Yes
Wet Space: No
Addition: No
Conversion: No