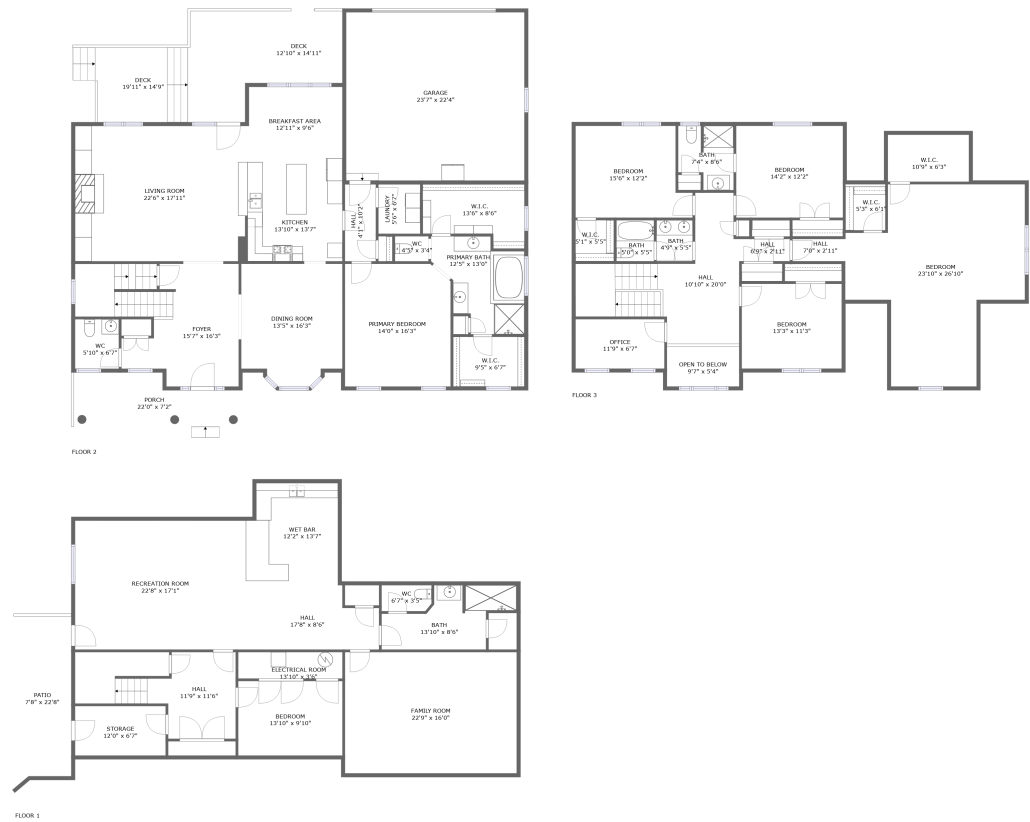




Home report


4531 Brentwood Court, Kingston Court, Cave Spring, Roanoke,
Roanoke County, Virginia, United States, 24018





Property summary


**1** Garages


**6** Bedrooms

**4** Bathrooms

**1** Half baths

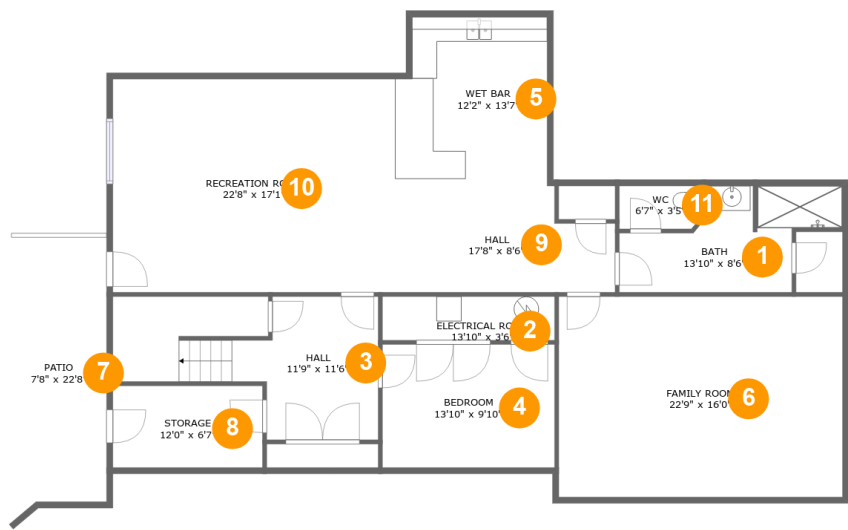
**3** Floors

**5,353** Gross living area sqft

**6,923** Total sqft

Home report

4531 Brentwood Court, Kingston Court, Cave Spring, Roanoke,
Roanoke County, Virginia, United States, 24018



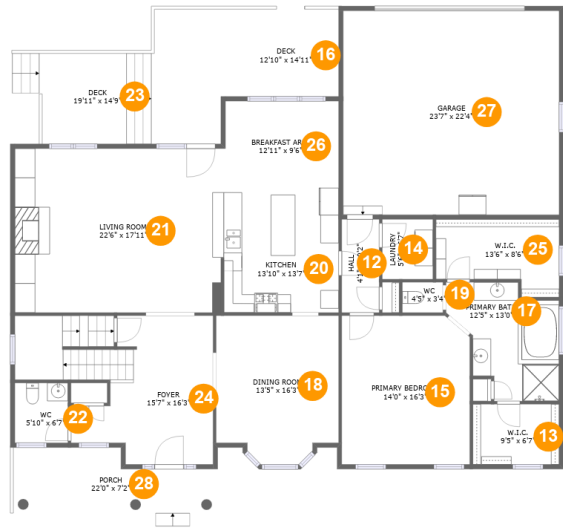
Room dimensions

Floor 1 Total sqft: 1988 Living area: 1668

| # | | Max Dimensions | sqft | Included |
|----|-----------------|----------------|------------|----------|
| 1 | Bath | 13'10" x 8'6" | 105 sq. ft | Yes |
| 2 | Electrical Room | 13'10" x 3'6" | 48 sq. ft | No |
| 3 | Hall | 11'9" x 11'6" | 183 sq. ft | Yes |
| 4 | Bedroom | 13'10" x 9'10" | 136 sq. ft | Yes |
| 5 | Wet Bar | 12'2" x 13'7" | 158 sq. ft | Yes |
| 6 | Family Room | 22'9" x 16'0" | 366 sq. ft | Yes |
| 7 | Patio | 7'8" x 22'8" | 163 sq. ft | No |
| 8 | Storage | 12'0" x 6'7" | 79 sq. ft | No |
| 9 | Hall | 17'8" x 8'6" | 136 sq. ft | Yes |
| 10 | Recreation Room | 22'8" x 17'1" | 387 sq. ft | Yes |
| 11 | WC | 6'7" x 3'5" | 22 sq. ft | Yes |

Home report

4531 Brentwood Court, Kingston Court, Cave Spring, Roanoke,
Roanoke County, Virginia, United States, 24018



Room dimensions

Floor 2 Total sqft: 3089 Living area: 1991

| # | | Max Dimensions | sqft | Included |
|----|-----------------|-----------------|------------|----------|
| 12 | Hall | 4'1" x 10'2" | 42 sq. ft | Yes |
| 13 | W.I.C. | 9'5" x 6'7" | 62 sq. ft | Yes |
| 14 | Laundry | 5'6" x 6'7" | 36 sq. ft | Yes |
| 15 | Primary Bedroom | 14'0" x 16'3" | 225 sq. ft | Yes |
| 16 | Deck | 12'10" x 14'11" | 160 sq. ft | No |
| 17 | Primary Bath | 12'5" x 13'0" | 121 sq. ft | Yes |
| 18 | Dining Room | 13'5" x 16'3" | 201 sq. ft | Yes |
| 19 | WC | 4'5" x 3'4" | 15 sq. ft | Yes |
| 20 | Kitchen | 13'10" x 13'7" | 180 sq. ft | Yes |
| 21 | Living Room | 22'6" x 17'11" | 398 sq. ft | Yes |
| 22 | WC | 5'10" x 6'7" | 38 sq. ft | Yes |

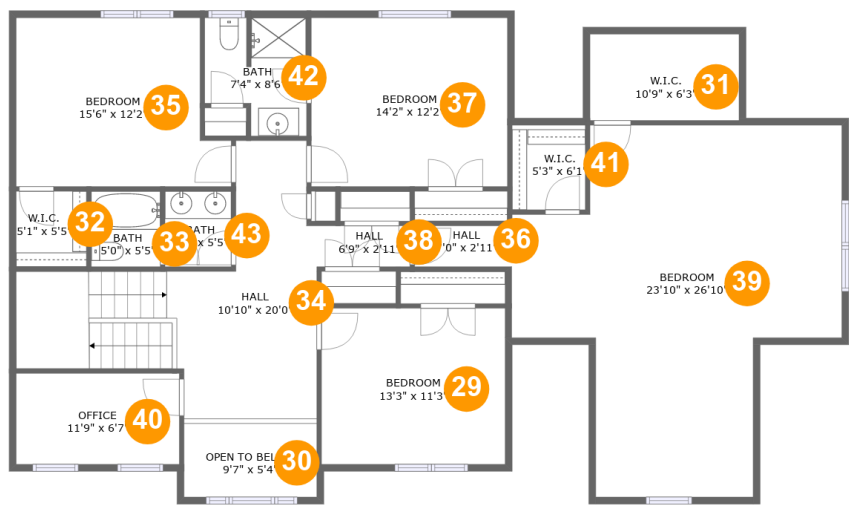
Home report

**4531 Brentwood Court, Kingston Court, Cave Spring, Roanoke,
Roanoke County, Virginia, United States, 24018**

| # | | Max Dimensions | sqft | Included |
|----|----------------|----------------|------------|----------|
| 23 | Deck | 19'11" x 14'9" | 243 sq. ft | No |
| 24 | Foyer | 15'7" x 16'3" | 266 sq. ft | Yes |
| 25 | W.I.C. | 13'6" x 8'6" | 96 sq. ft | Yes |
| 26 | Breakfast Area | 12'11" x 9'6" | 120 sq. ft | Yes |
| 27 | Garage | 23'7" x 22'4" | 527 sq. ft | No |
| 28 | Porch | 22'0" x 7'2" | 139 sq. ft | No |

Home report

4531 Brentwood Court, Kingston Court, Cave Spring, Roanoke,
Roanoke County, Virginia, United States, 24018



Room dimensions

Floor 3 Total sqft: 1846 Living area: 1694

| # | | Max Dimensions | sqft | Included |
|----|---------------|-----------------|------------|----------|
| 29 | Bedroom | 13'3" x 11'3" | 149 sq. ft | Yes |
| 30 | Open To Below | 9'7" x 5'4" | 51 sq. ft | No |
| 31 | W.I.C. | 10'9" x 6'3" | 25 sq. ft | Yes |
| 32 | W.I.C. | 5'1" x 5'5" | 28 sq. ft | Yes |
| 33 | Bath | 5'0" x 5'5" | 27 sq. ft | Yes |
| 34 | Hall | 10'10" x 20'0" | 240 sq. ft | Yes |
| 35 | Bedroom | 15'6" x 12'2" | 169 sq. ft | Yes |
| 36 | Hall | 7'0" x 2'11" | 21 sq. ft | Yes |
| 37 | Bedroom | 14'2" x 12'2" | 172 sq. ft | Yes |
| 38 | Hall | 6'9" x 2'11" | 20 sq. ft | Yes |
| 39 | Bedroom | 23'10" x 26'10" | 431 sq. ft | Yes |

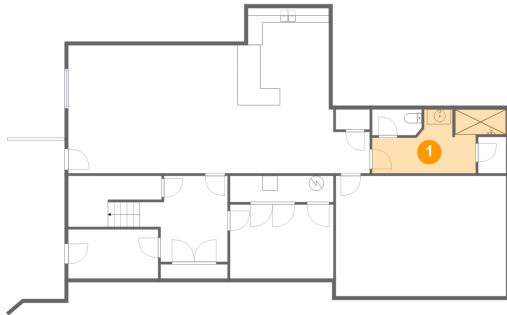
Home report

**4531 Brentwood Court, Kingston Court, Cave Spring, Roanoke,
Roanoke County, Virginia, United States, 24018**

| # | | Max Dimensions | sqft | Included |
|----|--------|----------------|-----------|----------|
| 40 | Office | 11'9" x 6'7" | 77 sq. ft | Yes |
| 41 | W.I.C. | 5'3" x 6'1" | 32 sq. ft | Yes |
| 42 | Bath | 7'4" x 8'6" | 54 sq. ft | Yes |
| 43 | Bath | 4'9" x 5'5" | 26 sq. ft | Yes |

**4531 Brentwood Court, Kingston Court, Cave Spring, Roanoke,
Roanoke County, Virginia, United States, 24018**

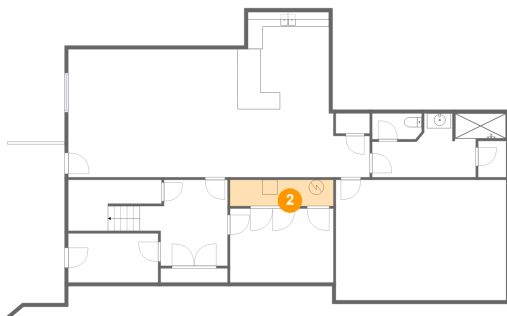
1 Floor 1 - Bath



Max Dimensions: 13'10" x 8'6"
Calculated Area: 105 sq. ft
Included: Yes

Heated: Yes
Finished: Yes
Enclosed: Yes
Contiguous: Yes
Permitted: Yes
Wet space: Yes
Addition: No
Conversion: No

2 Floor 1 - Electrical Room

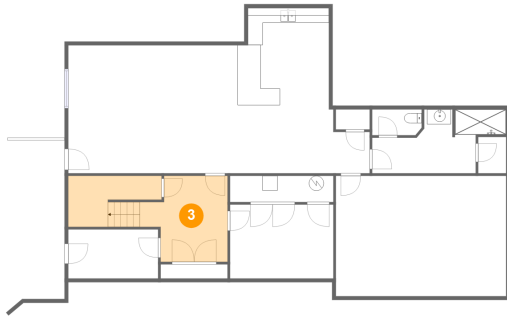


Max Dimensions: 13'10" x 3'6"
Calculated Area: 48 sq. ft
Included: No

Heated: No
Finished: No
Enclosed: Yes
Contiguous: Yes
Permitted: Yes
Wet space: No
Addition: No
Conversion: No

4531 Brentwood Court, Kingston Court, Cave Spring, Roanoke,
Roanoke County, Virginia, United States, 24018

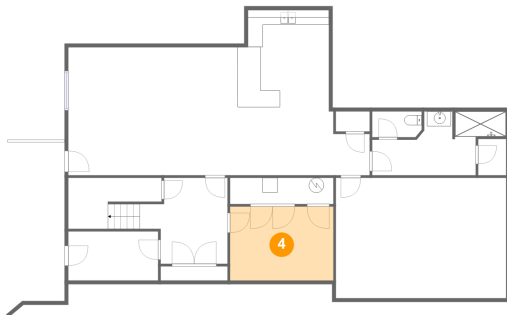
3 Floor 1 - Hall



Max Dimensions: 11'9" x 11'6"
Calculated Area: 183 sq. ft
Included: Yes

Heated: Yes
Finished: Yes
Enclosed: Yes
Contiguous: Yes
Permitted: Yes
Wet space: No
Addition: No
Conversion: No

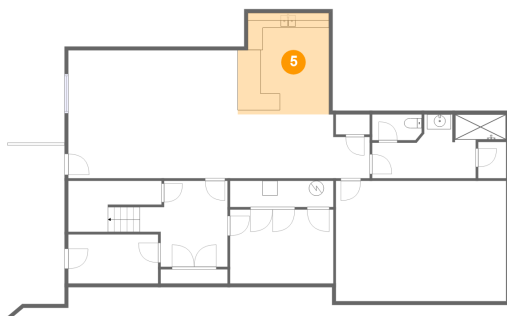
4 Floor 1 - Bedroom



Max Dimensions: 13'10" x 9'10"
Calculated Area: 136 sq. ft
Included: Yes

Heated: Yes
Finished: Yes
Enclosed: Yes
Contiguous: Yes
Permitted: Yes
Wet space: No
Addition: No
Conversion: No

5 Floor 1 - Wet Bar

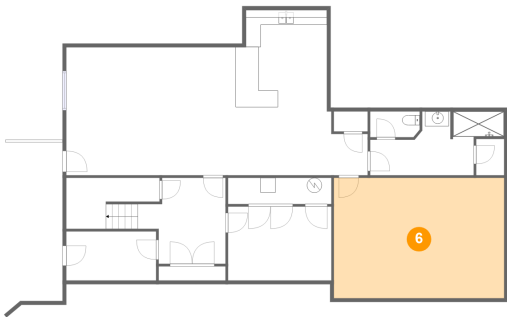


Max Dimensions: 12'2" x 13'7"
Calculated Area: 158 sq. ft
Included: Yes

Heated: Yes
Finished: Yes
Enclosed: Yes
Contiguous: Yes
Permitted: Yes
Wet space: No
Addition: No
Conversion: No

4531 Brentwood Court, Kingston Court, Cave Spring, Roanoke,
Roanoke County, Virginia, United States, 24018

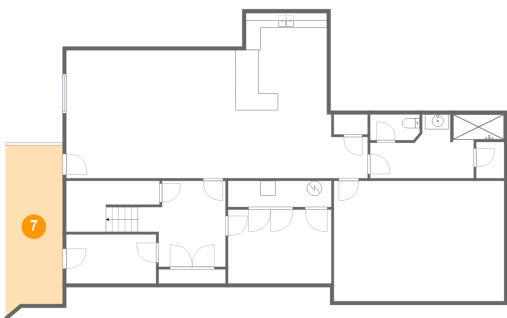
6 Floor 1 - Family Room



Max Dimensions: 22'9" x 16'0"
Calculated Area: 366 sq. ft
Included: Yes

Heated: Yes
Finished: Yes
Enclosed: Yes
Contiguous: Yes
Permitted: Yes
Wet space: No
Addition: No
Conversion: No

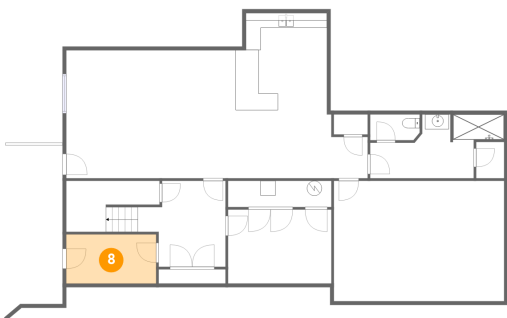
7 Floor 1 - Patio



Max Dimensions: 7'8" x 22'8"
Calculated Area: 163 sq. ft
Included: No

Heated: No
Finished: Yes
Enclosed: No
Contiguous: Yes
Permitted: Yes
Wet space: No
Addition: No
Conversion: No

8 Floor 1 - Storage

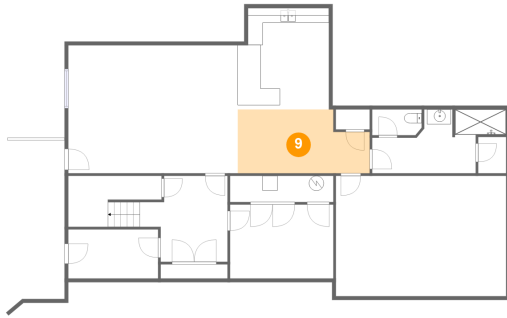


Max Dimensions: 12'0" x 6'7"
Calculated Area: 79 sq. ft
Included: No

Heated: No
Finished: No
Enclosed: No
Contiguous: Yes
Permitted: Yes
Wet space: No
Addition: No
Conversion: No

4531 Brentwood Court, Kingston Court, Cave Spring, Roanoke,
Roanoke County, Virginia, United States, 24018

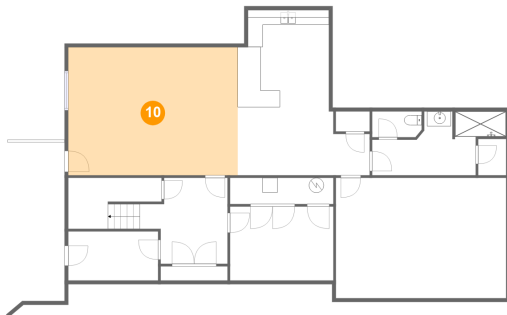
9 Floor 1 - Hall



Max Dimensions: 17'8" x 8'6"
Calculated Area: 136 sq. ft
Included: Yes

Heated: Yes
Finished: Yes
Enclosed: Yes
Contiguous: Yes
Permitted: Yes
Wet space: No
Addition: No
Conversion: No

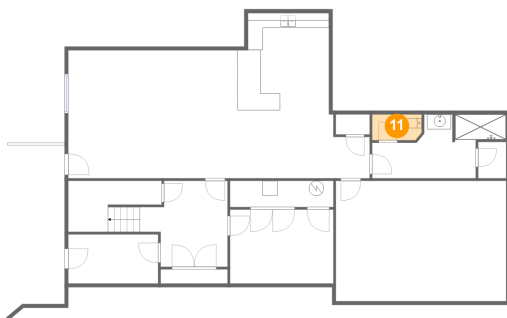
10 Floor 1 - Recreation Room



Max Dimensions: 22'8" x 17'1"
Calculated Area: 387 sq. ft
Included: Yes

Heated: Yes
Finished: Yes
Enclosed: Yes
Contiguous: Yes
Permitted: Yes
Wet space: No
Addition: No
Conversion: No

11 Floor 1 - WC

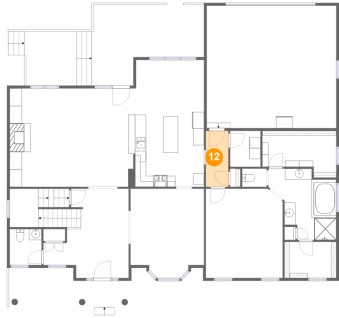


Max Dimensions: 6'7" x 3'5"
Calculated Area: 22 sq. ft
Included: Yes

Heated: Yes
Finished: Yes
Enclosed: Yes
Contiguous: Yes
Permitted: Yes
Wet space: Yes
Addition: No
Conversion: No

4531 Brentwood Court, Kingston Court, Cave Spring, Roanoke,
Roanoke County, Virginia, United States, 24018

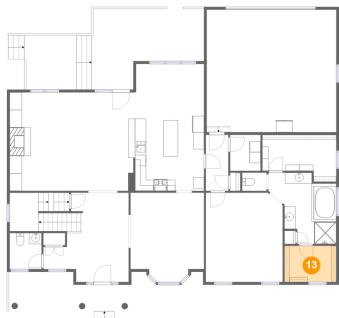
12 Floor 2 - Hall



Max Dimensions: 4'1" x 10'2"
Calculated Area: 42 sq. ft
Included: Yes

Heated: Yes
Finished: Yes
Enclosed: Yes
Contiguous: Yes
Permitted: Yes
Wet space: No
Addition: No
Conversion: No

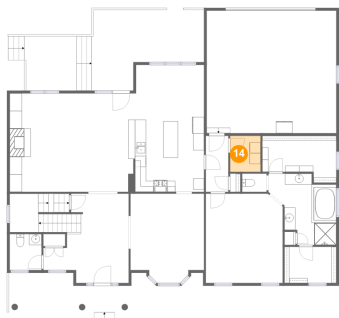
13 Floor 2 - W.I.C.



Max Dimensions: 9'5" x 6'7"
Calculated Area: 62 sq. ft
Included: Yes

Heated: Yes
Finished: Yes
Enclosed: Yes
Contiguous: Yes
Permitted: Yes
Wet space: No
Addition: No
Conversion: No

14 Floor 2 - Laundry

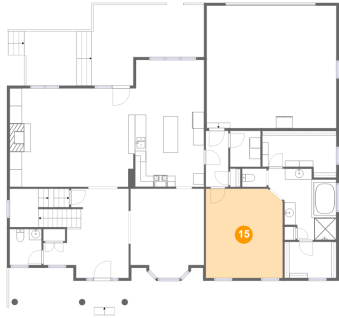


Max Dimensions: 5'6" x 6'7"
Calculated Area: 36 sq. ft
Included: Yes

Heated: Yes
Finished: Yes
Enclosed: Yes
Contiguous: Yes
Permitted: Yes
Wet space: No
Addition: No
Conversion: No

4531 Brentwood Court, Kingston Court, Cave Spring, Roanoke,
Roanoke County, Virginia, United States, 24018

15 Floor 2 - Primary Bedroom



Max Dimensions: 14'0" x 16'3"
Calculated Area: 225 sq. ft
Included: Yes

Heated: Yes
Finished: Yes
Enclosed: Yes
Contiguous: Yes
Permitted: Yes
Wet space: No
Addition: No
Conversion: No

16 Floor 2 - Deck



Max Dimensions: 12'10" x 14'11"
Calculated Area: 160 sq. ft
Included: No

Heated: No
Finished: Yes
Enclosed: No
Contiguous: Yes
Permitted: Yes
Wet space: No
Addition: No
Conversion: No

17 Floor 2 - Primary Bath

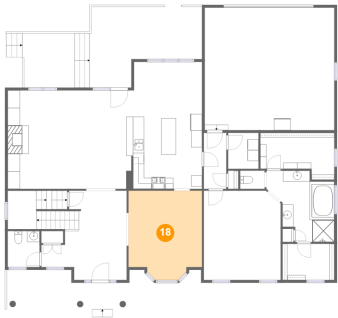


Max Dimensions: 12'5" x 13'0"
Calculated Area: 121 sq. ft
Included: Yes

Heated: Yes
Finished: Yes
Enclosed: Yes
Contiguous: Yes
Permitted: Yes
Wet space: Yes
Addition: No
Conversion: No

4531 Brentwood Court, Kingston Court, Cave Spring, Roanoke,
Roanoke County, Virginia, United States, 24018

18 Floor 2 - Dining Room



Max Dimensions: 13'5" x 16'3"
Calculated Area: 201 sq. ft
Included: Yes

Heated: Yes
Finished: Yes
Enclosed: Yes
Contiguous: Yes
Permitted: Yes
Wet space: No
Addition: No
Conversion: No

19 Floor 2 - WC



Max Dimensions: 4'5" x 3'4"
Calculated Area: 15 sq. ft
Included: Yes

Heated: Yes
Finished: Yes
Enclosed: Yes
Contiguous: Yes
Permitted: Yes
Wet space: Yes
Addition: No
Conversion: No

20 Floor 2 - Kitchen



Max Dimensions: 13'10" x 13'7"
Calculated Area: 180 sq. ft
Included: Yes

Heated: Yes
Finished: Yes
Enclosed: Yes
Contiguous: Yes
Permitted: Yes
Wet space: No
Addition: No
Conversion: No

21 Floor 2 - Living Room



Max Dimensions: 22'6" x 17'11"
Calculated Area: 398 sq. ft
Included: Yes

Heated: Yes
Finished: Yes
Enclosed: Yes
Contiguous: Yes
Permitted: Yes
Wet space: No
Addition: No
Conversion: No

22 Floor 2 - WC



Max Dimensions: 5'10" x 6'7"
Calculated Area: 38 sq. ft
Included: Yes

Heated: Yes
Finished: Yes
Enclosed: Yes
Contiguous: Yes
Permitted: Yes
Wet space: Yes
Addition: No
Conversion: No

23 Floor 2 - Deck



Max Dimensions: 19'11" x 14'9"
Calculated Area: 243 sq. ft
Included: No

Heated: No
Finished: Yes
Enclosed: No
Contiguous: Yes
Permitted: Yes
Wet space: No
Addition: No
Conversion: No

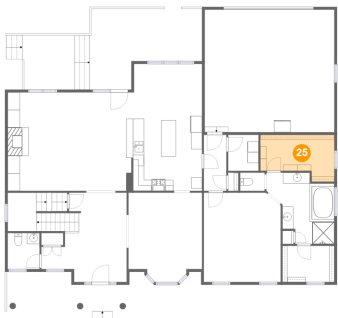
24 Floor 2 - Foyer



Max Dimensions: 15'7" x 16'3"
Calculated Area: 266 sq. ft
Included: Yes

Heated: Yes
Finished: Yes
Enclosed: Yes
Contiguous: Yes
Permitted: Yes
Wet space: No
Addition: No
Conversion: No

25 Floor 2 - W.I.C.



Max Dimensions: 13'6" x 8'6"
Calculated Area: 96 sq. ft
Included: Yes

Heated: Yes
Finished: Yes
Enclosed: Yes
Contiguous: Yes
Permitted: Yes
Wet space: No
Addition: No
Conversion: No

26 Floor 2 - Breakfast Area

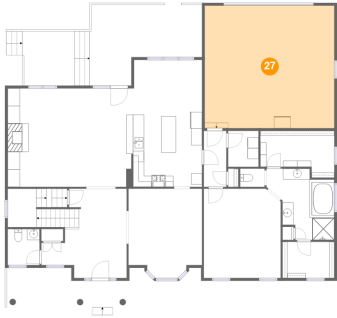


Max Dimensions: 12'11" x 9'6"
Calculated Area: 120 sq. ft
Included: Yes

Heated: Yes
Finished: Yes
Enclosed: Yes
Contiguous: Yes
Permitted: Yes
Wet space: No
Addition: No
Conversion: No

4531 Brentwood Court, Kingston Court, Cave Spring, Roanoke,
Roanoke County, Virginia, United States, 24018

27 Floor 2 - Garage



Max Dimensions: 23'7" x 22'4"
Calculated Area: 527 sq. ft
Included: No

Heated: No
Finished: No
Enclosed: Yes
Contiguous: Yes
Permitted: Yes
Wet space: No
Addition: No
Conversion: No

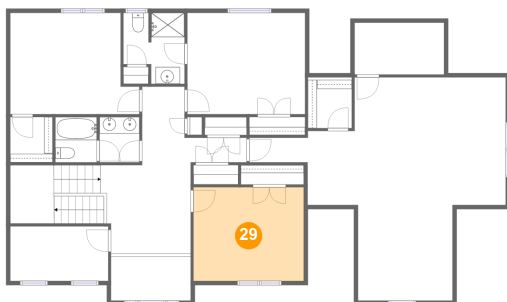
28 Floor 2 - Porch



Max Dimensions: 22'0" x 7'2"
Calculated Area: 139 sq. ft
Included: No

Heated: No
Finished: Yes
Enclosed: No
Contiguous: Yes
Permitted: Yes
Wet space: No
Addition: No
Conversion: No

29 Floor 3 - Bedroom



Max Dimensions: 13'3" x 11'3"
Calculated Area: 149 sq. ft
Included: Yes

Heated: Yes
Finished: Yes
Enclosed: Yes
Contiguous: Yes
Permitted: Yes
Wet space: No
Addition: No
Conversion: No

4531 Brentwood Court, Kingston Court, Cave Spring, Roanoke,
Roanoke County, Virginia, United States, 24018

30 Floor 3 - Open To Below



Max Dimensions: 9'7" x 5'4"
Calculated Area: 51 sq. ft
Included: No

Heated: No
Finished: No
Enclosed: No
Contiguous: Yes
Permitted: No
Wet space: No
Addition: No
Conversion: No

31 Floor 3 - W.I.C.



Max Dimensions: 10'9" x 6'3"
Calculated Area: 25 sq. ft
Included: Yes

Heated: Yes
Finished: Yes
Enclosed: Yes
Contiguous: Yes
Permitted: Yes
Wet space: No
Addition: No
Conversion: No

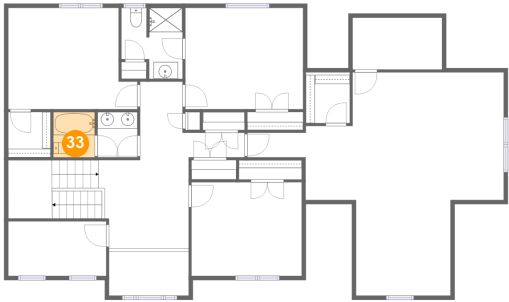
32 Floor 3 - W.I.C.



Max Dimensions: 5'1" x 5'5"
Calculated Area: 28 sq. ft
Included: Yes

Heated: Yes
Finished: Yes
Enclosed: Yes
Contiguous: Yes
Permitted: Yes
Wet space: No
Addition: No
Conversion: No

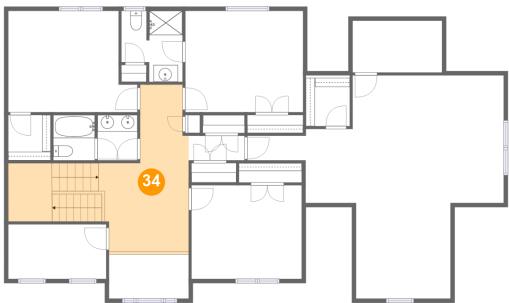
33 Floor 3 - Bath



Max Dimensions: 5'0" x 5'5"
Calculated Area: 27 sq. ft
Included: Yes

Heated: Yes
Finished: Yes
Enclosed: Yes
Contiguous: Yes
Permitted: Yes
Wet space: Yes
Addition: No
Conversion: No

34 Floor 3 - Hall



Max Dimensions: 10'10" x 20'0"
Calculated Area: 240 sq. ft
Included: Yes

Heated: Yes
Finished: Yes
Enclosed: Yes
Contiguous: Yes
Permitted: Yes
Wet space: No
Addition: No
Conversion: No

35 Floor 3 - Bedroom

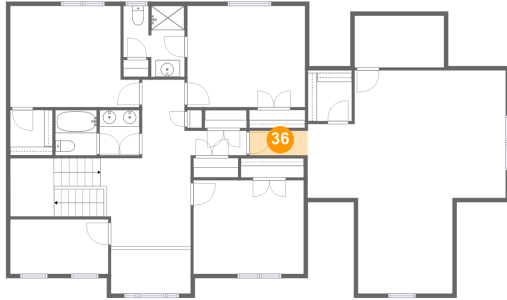


Max Dimensions: 15'6" x 12'2"
Calculated Area: 169 sq. ft
Included: Yes

Heated: Yes
Finished: Yes
Enclosed: Yes
Contiguous: Yes
Permitted: Yes
Wet space: No
Addition: No
Conversion: No

4531 Brentwood Court, Kingston Court, Cave Spring, Roanoke,
Roanoke County, Virginia, United States, 24018

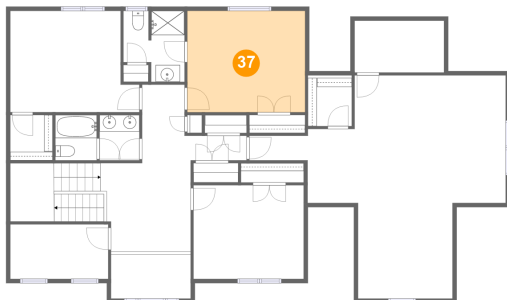
36 Floor 3 - Hall



Max Dimensions: 7'0" x 2'11"
Calculated Area: 21 sq. ft
Included: Yes

Heated: Yes
Finished: Yes
Enclosed: Yes
Contiguous: Yes
Permitted: Yes
Wet space: No
Addition: No
Conversion: No

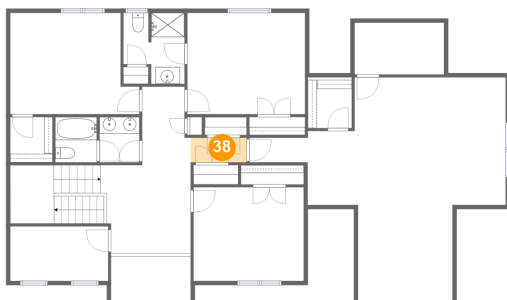
37 Floor 3 - Bedroom



Max Dimensions: 14'2" x 12'2"
Calculated Area: 172 sq. ft
Included: Yes

Heated: Yes
Finished: Yes
Enclosed: Yes
Contiguous: Yes
Permitted: Yes
Wet space: No
Addition: No
Conversion: No

38 Floor 3 - Hall



Max Dimensions: 6'9" x 2'11"
Calculated Area: 20 sq. ft
Included: Yes

Heated: Yes
Finished: Yes
Enclosed: Yes
Contiguous: Yes
Permitted: Yes
Wet space: No
Addition: No
Conversion: No

4531 Brentwood Court, Kingston Court, Cave Spring, Roanoke,
Roanoke County, Virginia, United States, 24018

39 Floor 3 - Bedroom



Max Dimensions: 23'10" x 26'10"
Calculated Area: 431 sq. ft
Included: Yes

Heated: Yes
Finished: Yes
Enclosed: Yes
Contiguous: Yes
Permitted: Yes
Wet space: No
Addition: No
Conversion: No

40 Floor 3 - Office



Max Dimensions: 11'9" x 6'7"
Calculated Area: 77 sq. ft
Included: Yes

Heated: Yes
Finished: Yes
Enclosed: Yes
Contiguous: Yes
Permitted: Yes
Wet space: No
Addition: No
Conversion: No

41 Floor 3 - W.I.C.

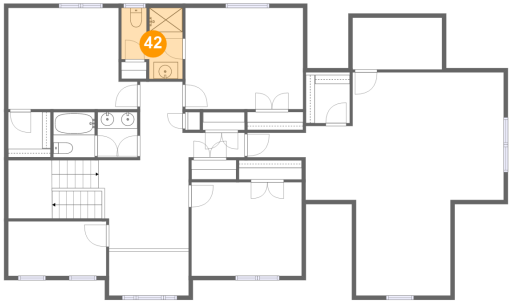


Max Dimensions: 5'3" x 6'1"
Calculated Area: 32 sq. ft
Included: Yes

Heated: Yes
Finished: Yes
Enclosed: Yes
Contiguous: Yes
Permitted: Yes
Wet space: No
Addition: No
Conversion: No

4531 Brentwood Court, Kingston Court, Cave Spring, Roanoke,
Roanoke County, Virginia, United States, 24018

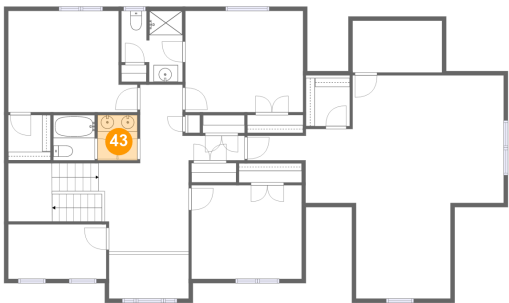
42 Floor 3 - Bath



Max Dimensions: 7'4" x 8'6"
Calculated Area: 54 sq. ft
Included: Yes

Heated: Yes
Finished: Yes
Enclosed: Yes
Contiguous: Yes
Permitted: Yes
Wet space: Yes
Addition: No
Conversion: No

43 Floor 3 - Bath



Max Dimensions: 4'9" x 5'5"
Calculated Area: 26 sq. ft
Included: Yes

Heated: Yes
Finished: Yes
Enclosed: Yes
Contiguous: Yes
Permitted: Yes
Wet space: Yes
Addition: No
Conversion: No