



Home report


1308 Parkdale Manor Drive, Pine Grove, Salem, Salem city,
Virginia, United States, 24153




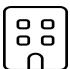
Property summary


 **0** Garages


 **2** Bedrooms

 **1** Bathrooms

 **1** Half baths

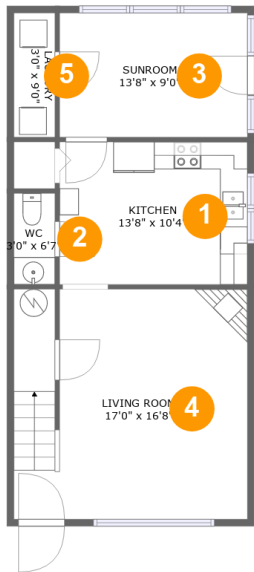
 **2** Floors

 **1,137** Gross living area sqft

 **1,338** Total sqft

Home report

1308 Parkdale Manor Drive, Pine Grove, Salem, Salem city,
Virginia, United States, 24153



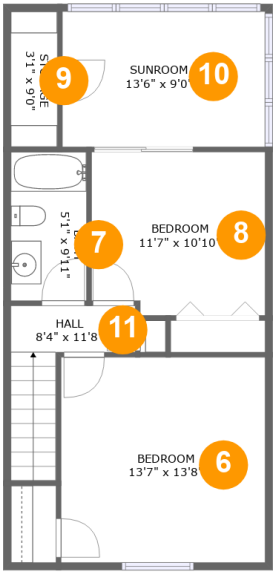
Room dimensions

Floor 1 Total sqft: 669 Living area: 500

#		Dimensions	sqft	Counted as living area
1	Kitchen	13'8" x 10'4"	141 sq. ft	Yes
2	WC	3'0" x 6'7"	20 sq. ft	Yes
3	Sunroom	13'8" x 9'0"	123 sq. ft	No
4	Living Room	17'0" x 16'8"	280 sq. ft	Yes
5	Laundry	3'0" x 9'0"	27 sq. ft	No

Home report

1308 Parkdale Manor Drive, Pine Grove, Salem, Salem city,
Virginia, United States, 24153

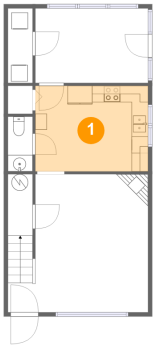


Room dimensions

Floor 2 Total sqft: 669 Living area: 637

#		Dimensions	sqft	Counted as living area
6	Bedroom	13'7" x 13'8"	186 sq. ft	Yes
7	Bath	5'1" x 9'11"	50 sq. ft	Yes
8	Bedroom	11'7" x 10'10"	123 sq. ft	Yes
9	Storage	3'1" x 9'0"	28 sq. ft	No
10	Sunroom	13'6" x 9'0"	122 sq. ft	Yes
11	Hall	8'4" x 11'8"	52 sq. ft	Yes

1 Floor 1 - Kitchen



Dimensions: 13'8" x 10'4"
Area: 141 sq. ft
Counted as living area: Yes

Heated: Yes
Finished: Yes
Enclosed: Yes
Contiguous: Yes
Permitted: Yes
Wet space: No
Addition: No
Conversion: No

2 Floor 1 - WC

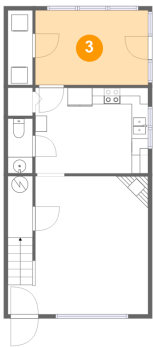


Dimensions: 3'0" x 6'7"
Area: 20 sq. ft
Counted as living area: Yes

Heated: Yes
Finished: Yes
Enclosed: Yes
Contiguous: Yes
Permitted: Yes
Wet space: Yes
Addition: No
Conversion: No

1308 Parkdale Manor Drive, Pine Grove, Salem, Salem city,
Virginia, United States, 24153

3 Floor 1 - Sunroom



Dimensions: 13'8" x 9'0"
Area: 123 sq. ft
Counted as living area: No

Heated: Yes
Finished: No
Enclosed: Yes
Contiguous: Yes
Permitted: Yes
Wet space: No
Addition: No
Conversion: No

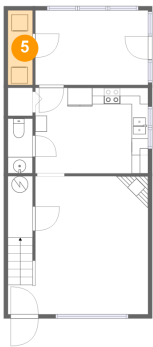
4 Floor 1 - Living Room



Dimensions: 17'0" x 16'8"
Area: 280 sq. ft
Counted as living area: Yes

Heated: Yes
Finished: Yes
Enclosed: Yes
Contiguous: Yes
Permitted: Yes
Wet space: No
Addition: No
Conversion: No

5 Floor 1 - Laundry

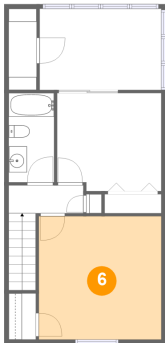


Dimensions: 3'0" x 9'0"
Area: 27 sq. ft
Counted as living area: No

Heated: Yes
Finished: No
Enclosed: Yes
Contiguous: Yes
Permitted: Yes
Wet space: No
Addition: No
Conversion: No

1308 Parkdale Manor Drive, Pine Grove, Salem, Salem city,
Virginia, United States, 24153

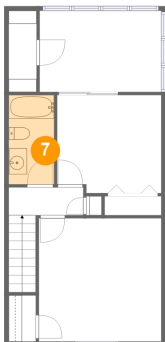
6 Floor 2 - Bedroom



Dimensions: 13'7" x 13'8"
Area: 186 sq. ft
Counted as living area: Yes

Heated: Yes
Finished: Yes
Enclosed: Yes
Contiguous: Yes
Permitted: Yes
Wet space: No
Addition: No
Conversion: No

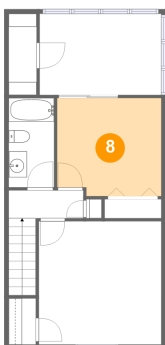
7 Floor 2 - Bath



Dimensions: 5'1" x 9'11"
Area: 50 sq. ft
Counted as living area: Yes

Heated: Yes
Finished: Yes
Enclosed: Yes
Contiguous: Yes
Permitted: Yes
Wet space: Yes
Addition: No
Conversion: No

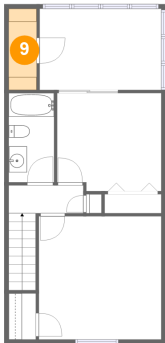
8 Floor 2 - Bedroom



Dimensions: 11'7" x 10'10"
Area: 123 sq. ft
Counted as living area: Yes

Heated: Yes
Finished: Yes
Enclosed: Yes
Contiguous: Yes
Permitted: Yes
Wet space: No
Addition: No
Conversion: No

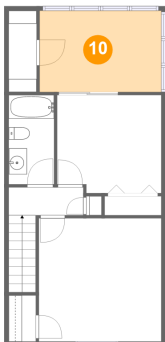
9 Floor 2 - Storage



Dimensions: 3'1" x 9'0"
Area: 28 sq. ft
Counted as living area: No

Heated: No
Finished: No
Enclosed: No
Contiguous: Yes
Permitted: Yes
Wet space: No
Addition: No
Conversion: No

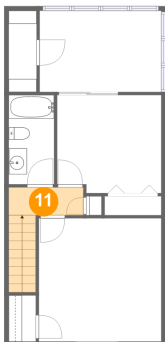
10 Floor 2 - Sunroom



Dimensions: 13'6" x 9'0"
Area: 122 sq. ft
Counted as living area: Yes

Heated: Yes
Finished: Yes
Enclosed: Yes
Contiguous: Yes
Permitted: Yes
Wet space: No
Addition: No
Conversion: No

11 Floor 2 - Hall



Dimensions: 8'4" x 11'8"
Area: 52 sq. ft
Counted as living area: Yes

Heated: Yes
Finished: Yes
Enclosed: Yes
Contiguous: Yes
Permitted: Yes
Wet space: No
Addition: No
Conversion: No