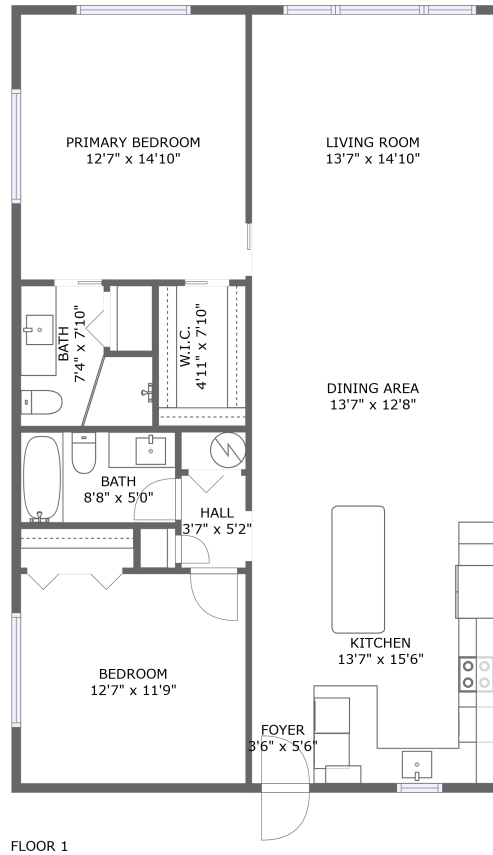



# 4550 Overlook Drive Northeast, Shore Acres, St. Petersburg, Pinellas County, Florida, United States,



## Property summary

 **0** Garages

 **2** Bedrooms

 **2** Bathrooms

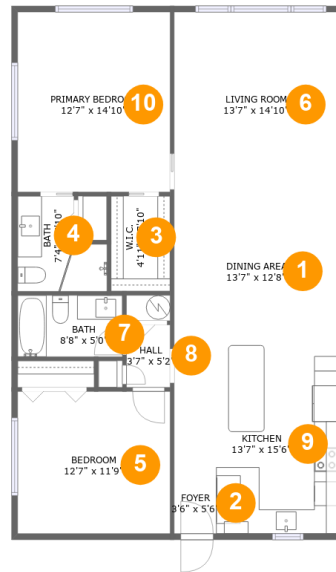
 **0** Half baths

 **1** Floors

 **1,140** Gross living area sqft

 **1,140** Total sqft

# 4550 Overlook Drive Northeast, Shore Acres, St. Petersburg, Pinellas County, Florida, United States,



## Room dimensions

Floor 1

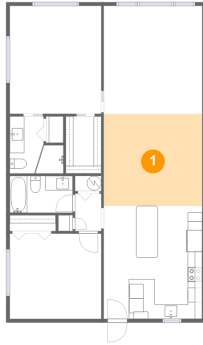
Total sqft: 1140 Living area: 1140

#		Dimensions	sqft	Counted as living area
1	Dining Area	13'7" x 12'8"	172 sq. ft	Yes
2	Foyer	3'6" x 5'6"	19 sq. ft	Yes
3	W.I.C.	4'11" x 7'10"	38 sq. ft	Yes
4	Bath	7'4" x 7'10"	47 sq. ft	Yes
5	Bedroom	12'7" x 11'9"	148 sq. ft	Yes
6	Living Room	13'7" x 14'10"	201 sq. ft	Yes
7	Bath	8'8" x 5'0"	44 sq. ft	Yes
8	Hall	3'7" x 5'2"	19 sq. ft	Yes
9	Kitchen	13'7" x 15'6"	191 sq. ft	Yes
10	Primary Bedroom	12'7" x 14'10"	187 sq. ft	Yes

# 4550 Overlook Drive Northeast, Shore Acres, St. Petersburg, Pinellas County, Florida, United States,

## 1 Floor 1 - Dining Area

---



**Dimensions:** 13'7" x 12'8"  
**Area:** 172 sq. ft  
**Counted as living area:** Yes

**Heated:** Yes  
**Finished:** Yes  
**Enclosed:** Yes  
**Contiguous:** Yes  
**Permitted:** Yes  
**Wet space:** No  
**Addition:** No  
**Conversion:** No

## 2 Floor 1 - Foyer

---

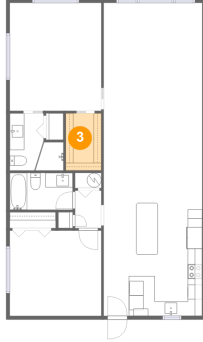


**Dimensions:** 3'6" x 5'6"  
**Area:** 19 sq. ft  
**Counted as living area:** Yes

**Heated:** Yes  
**Finished:** Yes  
**Enclosed:** Yes  
**Contiguous:** Yes  
**Permitted:** Yes  
**Wet space:** No  
**Addition:** No  
**Conversion:** No

# 4550 Overlook Drive Northeast, Shore Acres, St. Petersburg, Pinellas County, Florida, United States,

## 3 Floor 1 - W.I.C.



Dimensions: 4'11" x 7'10"  
Area: 38 sq. ft  
Counted as living area: Yes

Heated: Yes  
Finished: Yes  
Enclosed: Yes  
Contiguous: Yes  
Permitted: Yes  
Wet space: No  
Addition: No  
Conversion: No

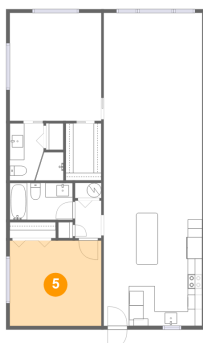
## 4 Floor 1 - Bath



Dimensions: 7'4" x 7'10"  
Area: 47 sq. ft  
Counted as living area: Yes

Heated: Yes  
Finished: Yes  
Enclosed: Yes  
Contiguous: Yes  
Permitted: Yes  
Wet space: Yes  
Addition: No  
Conversion: No

## 5 Floor 1 - Bedroom

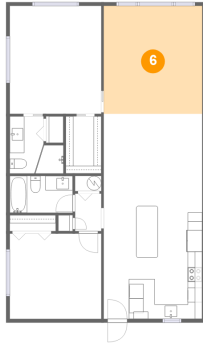


Dimensions: 12'7" x 11'9"  
Area: 148 sq. ft  
Counted as living area: Yes

Heated: Yes  
Finished: Yes  
Enclosed: Yes  
Contiguous: Yes  
Permitted: Yes  
Wet space: No  
Addition: No  
Conversion: No

# 4550 Overlook Drive Northeast, Shore Acres, St. Petersburg, Pinellas County, Florida, United States,

## 6 Floor 1 - Living Room



Dimensions: 13'7" x 14'10"  
Area: 201 sq. ft  
Counted as living area: Yes

Heated: Yes  
Finished: Yes  
Enclosed: Yes  
Contiguous: Yes  
Permitted: Yes  
Wet space: No  
Addition: No  
Conversion: No

## 7 Floor 1 - Bath



Dimensions: 8'8" x 5'0"  
Area: 44 sq. ft  
Counted as living area: Yes

Heated: Yes  
Finished: Yes  
Enclosed: Yes  
Contiguous: Yes  
Permitted: Yes  
Wet space: Yes  
Addition: No  
Conversion: No

## 8 Floor 1 - Hall



Dimensions: 3'7" x 5'2"  
Area: 19 sq. ft  
Counted as living area: Yes

Heated: Yes  
Finished: Yes  
Enclosed: Yes  
Contiguous: Yes  
Permitted: Yes  
Wet space: No  
Addition: No  
Conversion: No

# 4550 Overlook Drive Northeast, Shore Acres, St. Petersburg, Pinellas County, Florida, United States,

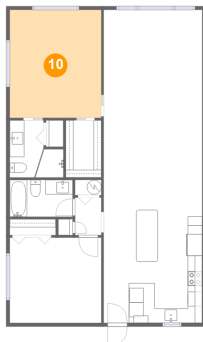
## 9 Floor 1 - Kitchen



Dimensions: 13'7" x 15'6"  
Area: 191 sq. ft  
Counted as living area: Yes

Heated: Yes  
Finished: Yes  
Enclosed: Yes  
Contiguous: Yes  
Permitted: Yes  
Wet space: No  
Addition: No  
Conversion: No

## 10 Floor 1 - Primary Bedroom



Dimensions: 12'7" x 14'10"  
Area: 187 sq. ft  
Counted as living area: Yes

Heated: Yes  
Finished: Yes  
Enclosed: Yes  
Contiguous: Yes  
Permitted: Yes  
Wet space: No  
Addition: No  
Conversion: No