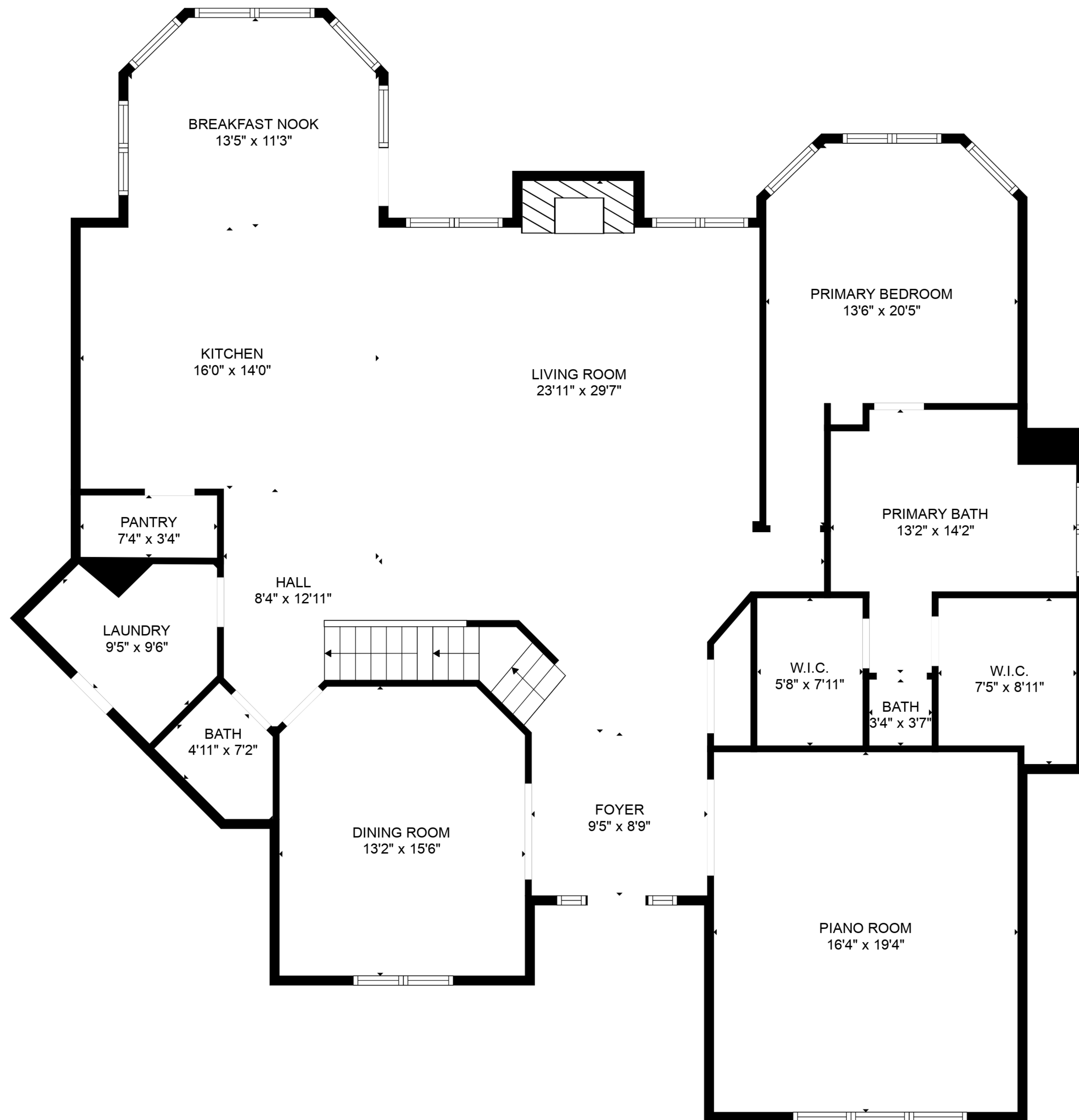


ROOM
11'8" x 4'5"

RECREATION ROOM
34'9" x 26'8"

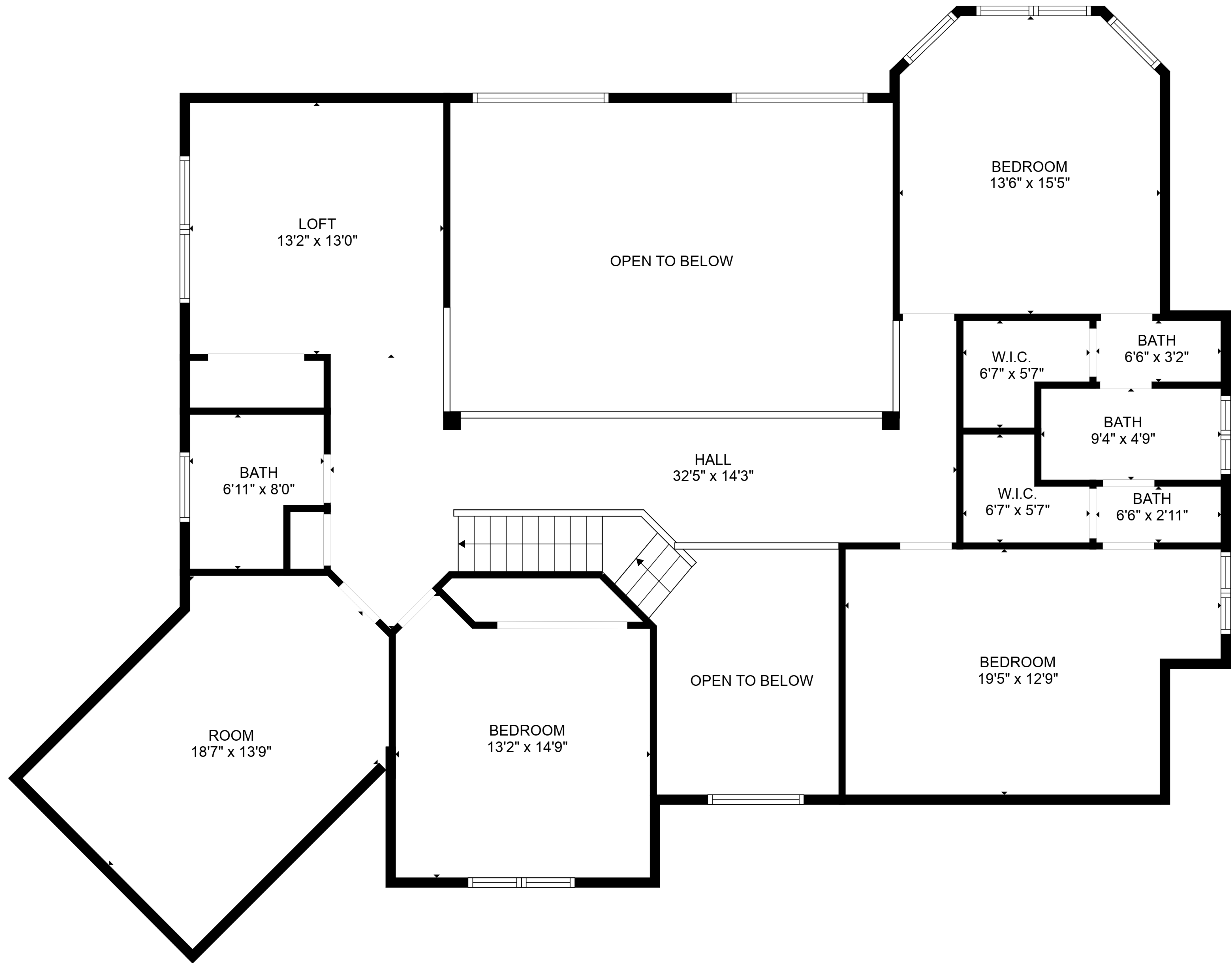
BASEMENT
47'9" x 51'0"

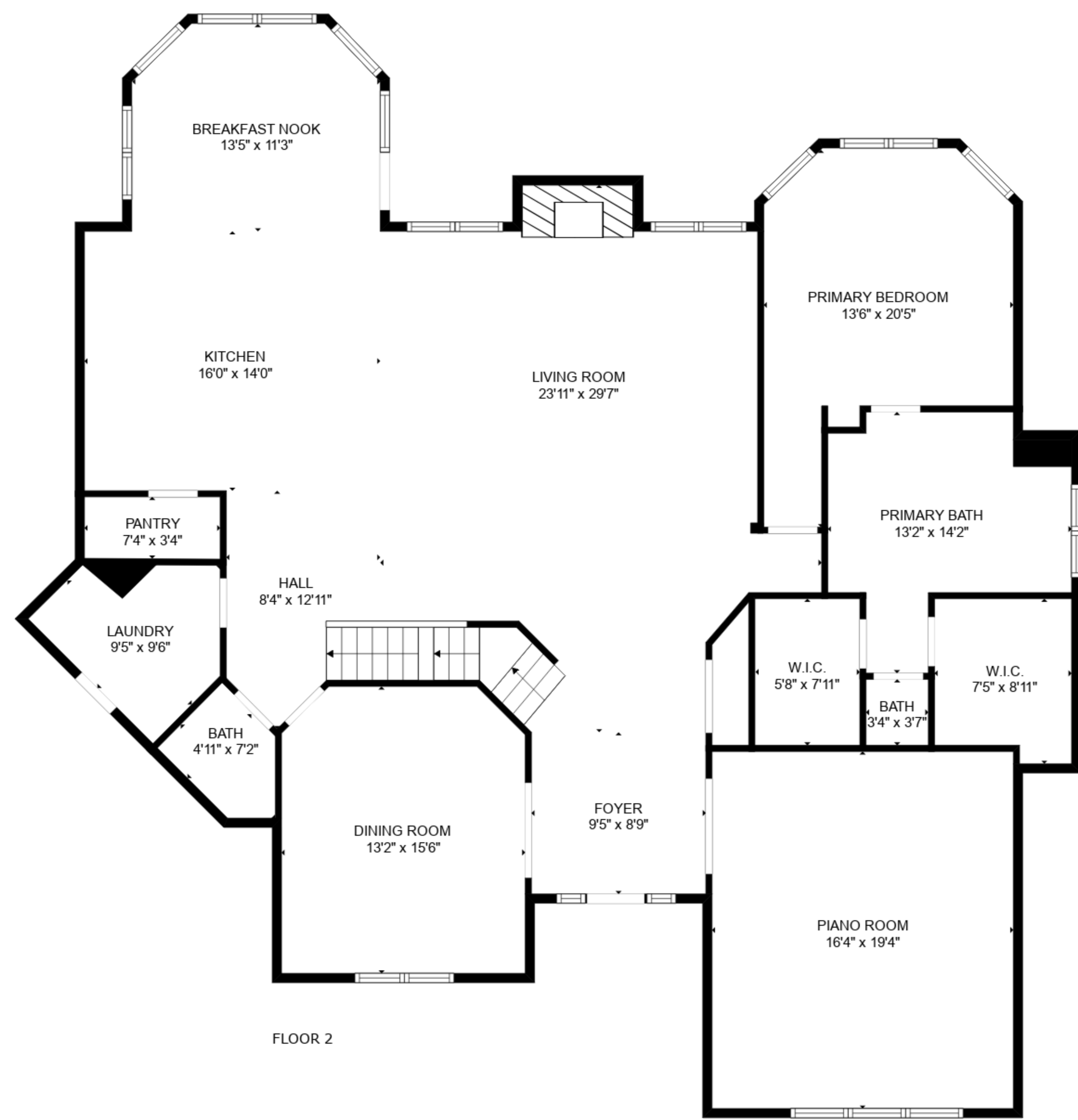


TOTAL: 4628 sq. ft

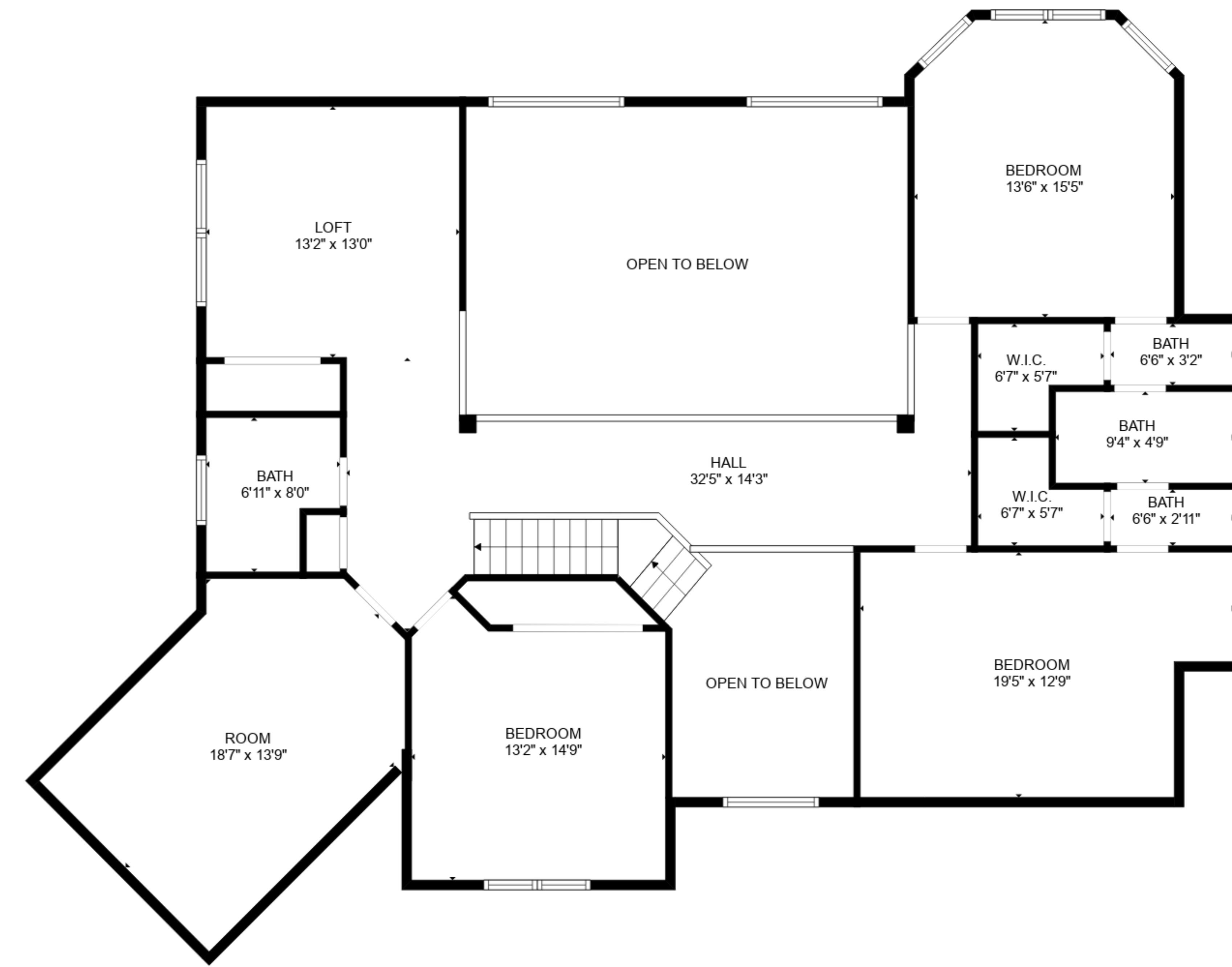
BELOW GROUND: 866 sq. ft, FLOOR 2: 2236 sq. ft, FLOOR 3: 1526 sq. ft
 EXCLUDED AREAS: ROOM: 47 sq. ft, BASEMENT: 1124 sq. ft, UNDEFINED: 5 sq. ft,
 FIREPLACE: 18 sq. ft, OPEN TO BELOW: 484 sq. ft, LOW CEILING: 63 sq. ft

SIZES AND DIMENSIONS ARE APPROXIMATE, ACTUAL MAY VARY.

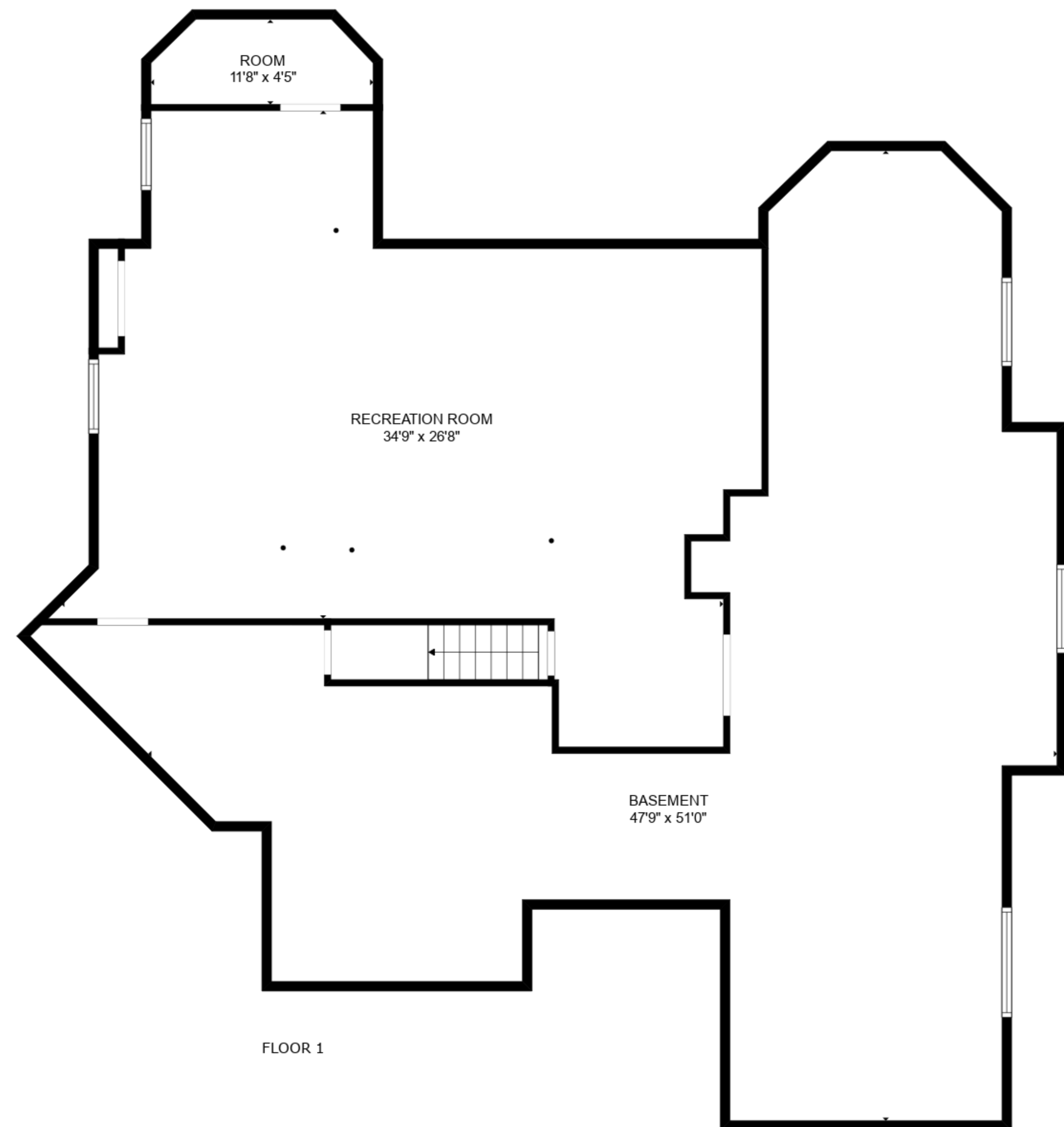




FLOOR 2



FLOOR 3



FLOOR 1

TOTAL: 4628 sq. ft

BELOW GROUND: 866 sq. ft, FLOOR 2: 2236 sq. ft, FLOOR 3: 1526 sq. ft
 EXCLUDED AREAS: ROOM: 47 sq. ft, BASEMENT: 1124 sq. ft, UNDEFINED: 5 sq. ft,
 FIREPLACE: 18 sq. ft, OPEN TO BELOW: 484 sq. ft, LOW CEILING: 63 sq. ft

SIZES AND DIMENSIONS ARE APPROXIMATE, ACTUAL MAY VARY.