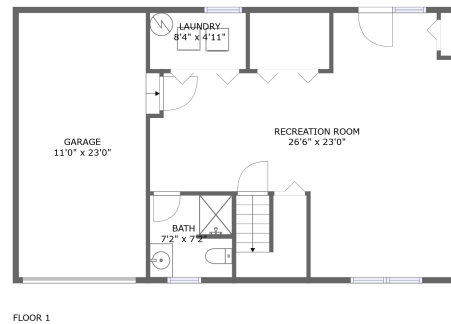
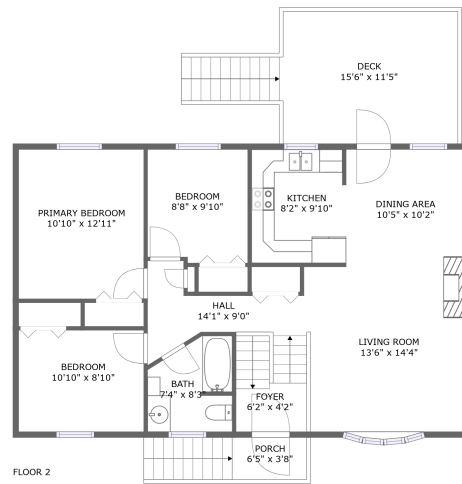



83 Pleasantview Terrace, Cherry Hill, Fairview Township, New Cumberland, York County,



Property summary

 **1** Garages

 **3** Bedrooms

 **2** Bathrooms

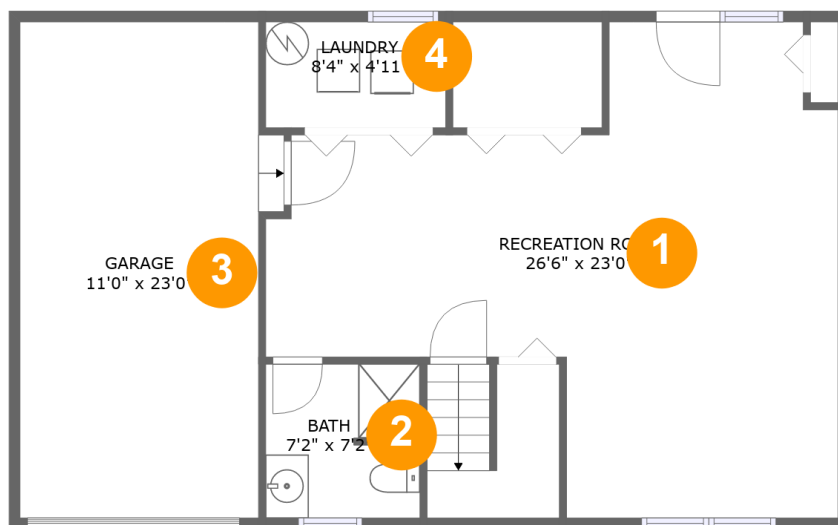
 **0** Half baths

 **2** Floors

 **1,675** Gross living area sqft

 **2,217** Total sqft

83 Pleasantview Terrace, Cherry Hill, Fairview Township, New Cumberland, York County,



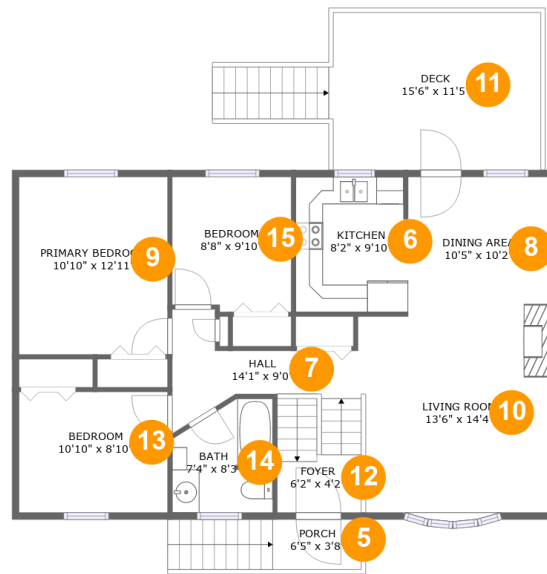
Room dimensions

Floor 1

Total sqft: 935 Living area: 653

#		Dimensions	sqft	Counted as living area
1	Recreation Room	26'6" x 23'0"	412 sq. ft	Yes
2	Bath	7'2" x 7'2"	50 sq. ft	Yes
3	Garage	11'0" x 23'0"	259 sq. ft	No
4	Laundry	8'4" x 4'11"	41 sq. ft	Yes

83 Pleasantview Terrace, Cherry Hill, Fairview Township, New Cumberland, York County,



Room dimensions

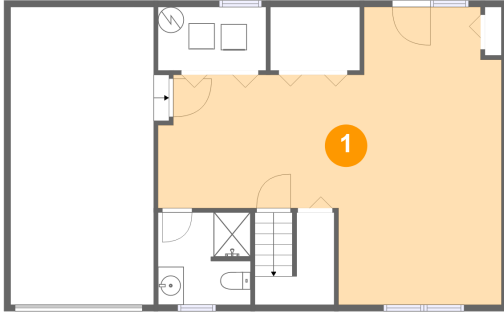
Floor 2

Total sqft: 1282 Living area: 1022

#		Dimensions	sqft	Counted as living area
5	Porch	6'5" x 3'8"	52 sq. ft	No
6	Kitchen	8'2" x 9'10"	80 sq. ft	Yes
7	Hall	14'1" x 9'0"	63 sq. ft	Yes
8	Dining Area	10'5" x 10'2"	107 sq. ft	Yes
9	Primary Bedroom	10'10" x 12'11"	141 sq. ft	Yes
10	Living Room	13'6" x 14'4"	197 sq. ft	Yes
11	Deck	15'6" x 11'5"	208 sq. ft	No
12	Foyer	6'2" x 4'2"	55 sq. ft	Yes
13	Bedroom	10'10" x 8'10"	96 sq. ft	Yes
14	Bath	7'4" x 8'3"	53 sq. ft	Yes
15	Bedroom	8'8" x 9'10"	84 sq. ft	Yes

83 Pleasantview Terrace, Cherry Hill, Fairview Township, New Cumberland, York County,

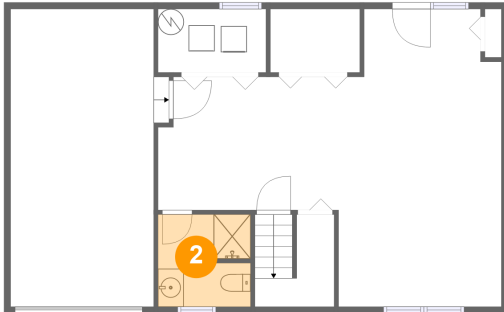
1 Floor 1 - Recreation Room



Dimensions: 26'6" x 23'0"
Area: 412 sq. ft
Counted as living area: Yes

Heated: Yes
Finished: Yes
Enclosed: Yes
Contiguous: Yes
Permitted: Yes
Wet space: No
Addition: No
Conversion: No

2 Floor 1 - Bath

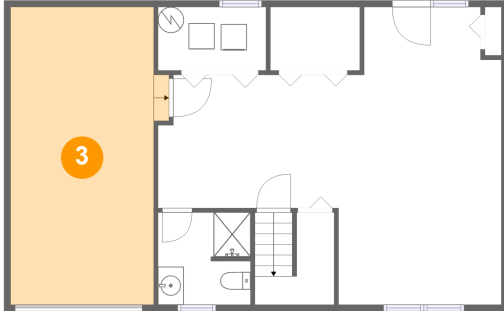


Dimensions: 7'2" x 7'2"
Area: 50 sq. ft
Counted as living area: Yes

Heated: Yes
Finished: Yes
Enclosed: Yes
Contiguous: Yes
Permitted: Yes
Wet space: Yes
Addition: No
Conversion: No

83 Pleasantview Terrace, Cherry Hill, Fairview Township, New Cumberland, York County,

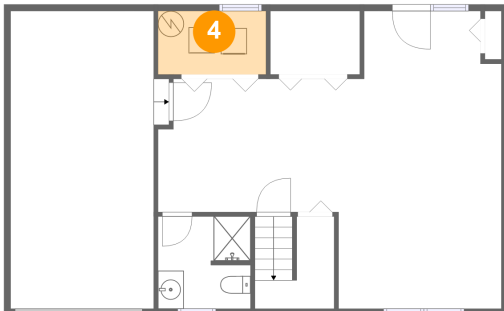
3 Floor 1 - Garage



Dimensions: 11'0" x 23'0"
Area: 259 sq. ft
Counted as living area: No

Heated: No
Finished: No
Enclosed: Yes
Contiguous: Yes
Permitted: Yes
Wet space: No
Addition: No
Conversion: No

4 Floor 1 - Laundry



Dimensions: 8'4" x 4'11"
Area: 41 sq. ft
Counted as living area: Yes

Heated: Yes
Finished: Yes
Enclosed: Yes
Contiguous: Yes
Permitted: Yes
Wet space: No
Addition: No
Conversion: No

5 Floor 2 - Porch



Dimensions: 6'5" x 3'8"
Area: 52 sq. ft
Counted as living area: No

Heated: No
Finished: Yes
Enclosed: No
Contiguous: Yes
Permitted: Yes
Wet space: No
Addition: No
Conversion: No

83 Pleasantview Terrace, Cherry Hill, Fairview Township, New Cumberland, York County,

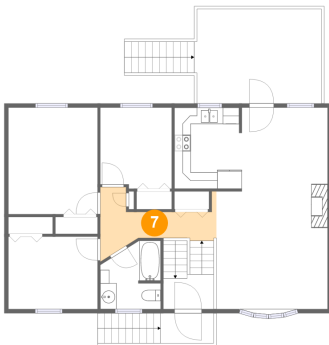
6 Floor 2 - Kitchen



Dimensions: 8'2" x 9'10"
Area: 80 sq. ft
Counted as living area: Yes

Heated: Yes
Finished: Yes
Enclosed: Yes
Contiguous: Yes
Permitted: Yes
Wet space: No
Addition: No
Conversion: No

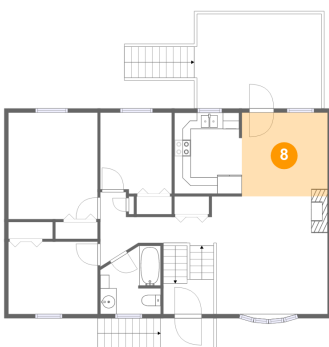
7 Floor 2 - Hall



Dimensions: 14'1" x 9'0"
Area: 63 sq. ft
Counted as living area: Yes

Heated: Yes
Finished: Yes
Enclosed: Yes
Contiguous: Yes
Permitted: Yes
Wet space: No
Addition: No
Conversion: No

8 Floor 2 - Dining Area



Dimensions: 10'5" x 10'2"
Area: 107 sq. ft
Counted as living area: Yes

Heated: Yes
Finished: Yes
Enclosed: Yes
Contiguous: Yes
Permitted: Yes
Wet space: No
Addition: No
Conversion: No

83 Pleasantview Terrace, Cherry Hill, Fairview Township, New Cumberland, York County,

9 Floor 2 - Primary Bedroom



Dimensions: 10'10" x 12'11"
Area: 141 sq. ft
Counted as living area: Yes

Heated: Yes
Finished: Yes
Enclosed: Yes
Contiguous: Yes
Permitted: Yes
Wet space: No
Addition: No
Conversion: No

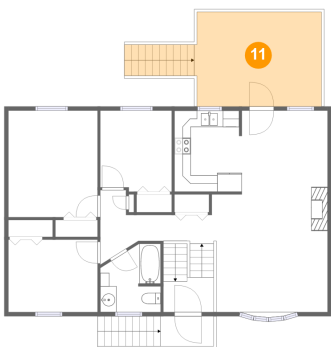
10 Floor 2 - Living Room



Dimensions: 13'6" x 14'4"
Area: 197 sq. ft
Counted as living area: Yes

Heated: Yes
Finished: Yes
Enclosed: Yes
Contiguous: Yes
Permitted: Yes
Wet space: No
Addition: No
Conversion: No

11 Floor 2 - Deck



Dimensions: 15'6" x 11'5"
Area: 208 sq. ft
Counted as living area: No

Heated: No
Finished: Yes
Enclosed: No
Contiguous: Yes
Permitted: Yes
Wet space: No
Addition: No
Conversion: No

83 Pleasantview Terrace, Cherry Hill, Fairview Township, New Cumberland, York County,

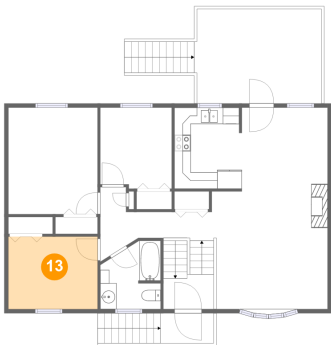
12 Floor 2 - Foyer



Dimensions: 6'2" x 4'2"
Area: 55 sq. ft
Counted as living area: Yes

Heated: Yes
Finished: Yes
Enclosed: Yes
Contiguous: Yes
Permitted: Yes
Wet space: No
Addition: No
Conversion: No

13 Floor 2 - Bedroom



Dimensions: 10'10" x 8'10"
Area: 96 sq. ft
Counted as living area: Yes

Heated: Yes
Finished: Yes
Enclosed: Yes
Contiguous: Yes
Permitted: Yes
Wet space: No
Addition: No
Conversion: No

14 Floor 2 - Bath



Dimensions: 7'4" x 8'3"
Area: 53 sq. ft
Counted as living area: Yes

Heated: Yes
Finished: Yes
Enclosed: Yes
Contiguous: Yes
Permitted: Yes
Wet space: Yes
Addition: No
Conversion: No

83 Pleasantview Terrace, Cherry Hill, Fairview Township, New Cumberland, York County,

15 Floor 2 - Bedroom



Dimensions: 8'8" x 9'10"
Area: 84 sq. ft
Counted as living area: Yes

Heated: Yes
Finished: Yes
Enclosed: Yes
Contiguous: Yes
Permitted: Yes
Wet space: No
Addition: No
Conversion: No