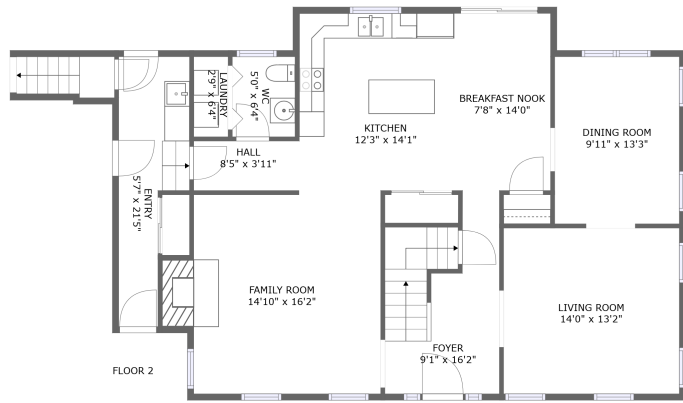
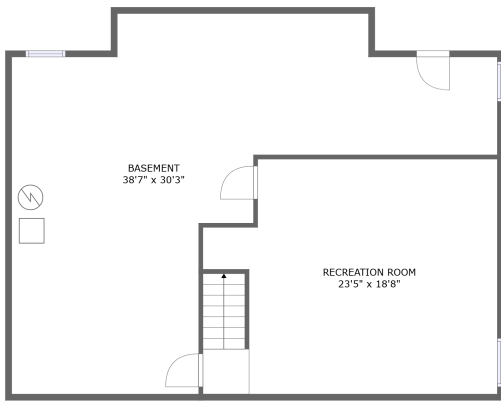
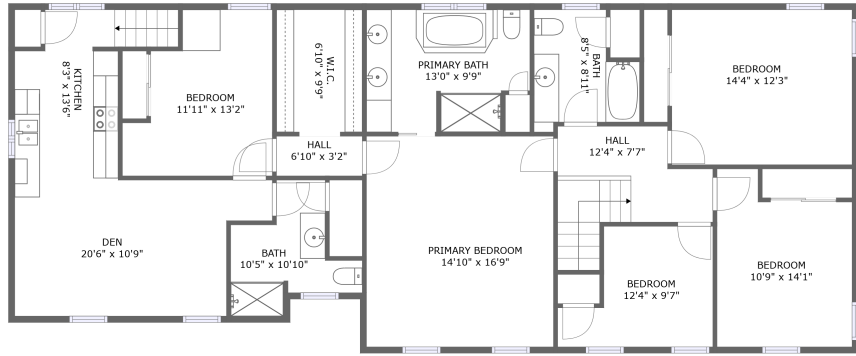


# 57 Arch Street, Westborough, Worcester County, Massachusetts, United States, 01581




## Property Summary


 **0** garages

 **5** bedrooms

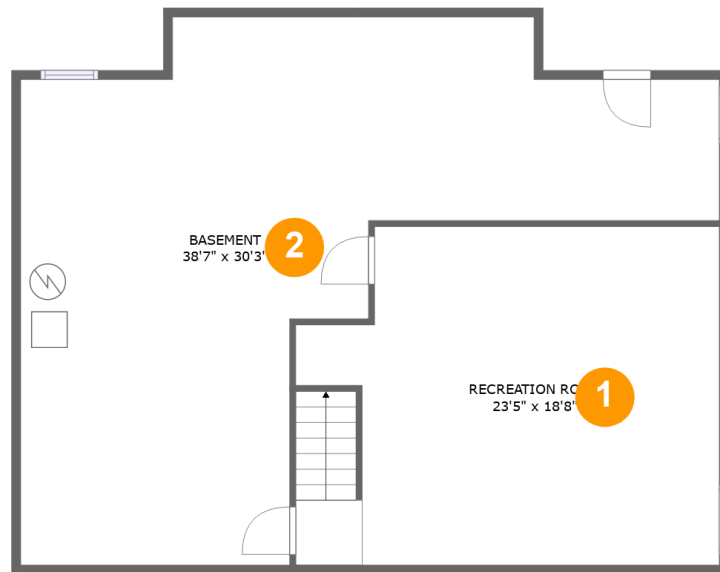
 **3** bathrooms

 **1** half baths

 **3** floors

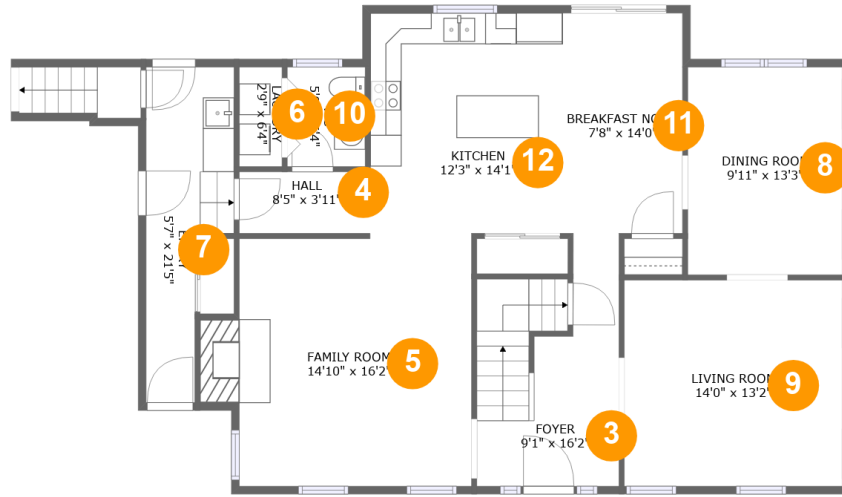
 **3,139** Gross Living Area sqft

 **4,312** total sqft

**57 Arch Street, Westborough, Worcester County,  
Massachusetts, United States, 01581****Room Dimensions****Floor 1****Total sqft: 1173****Living area: 0**

#	Room name	Dimensions	Area (sqft)	Counted as Living Area
1	Recreation Room	23'5" x 18'8"	410 sq. ft	No
2	Basement	38'7" x 30'3"	675 sq. ft	No

# 57 Arch Street, Westborough, Worcester County, Massachusetts, United States, 01581



## Room Dimensions

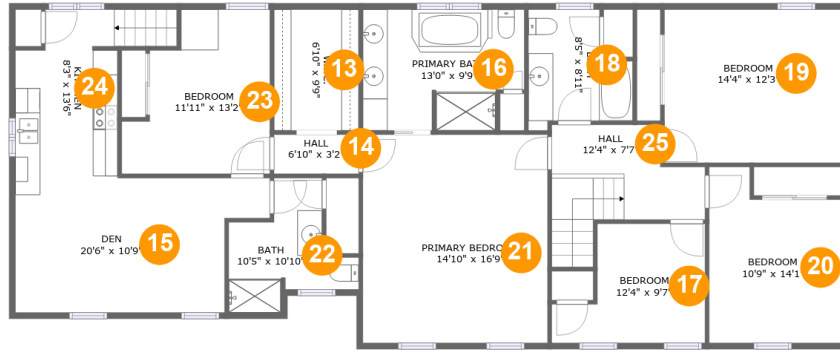
Floor 2

Total sqft: 1340

Living area: 1340

#	Room name	Dimensions	Area (sqft)	Counted as Living Area
3	Foyer	9'1" x 16'2"	126 sq. ft	Yes
4	Hall	8'5" x 3'11"	33 sq. ft	Yes
5	Family Room	14'10" x 16'2"	251 sq. ft	Yes
6	Laundry	2'9" x 6'4"	17 sq. ft	Yes
7	Entry	5'7" x 21'5"	94 sq. ft	Yes
8	Dining Room	9'11" x 13'3"	132 sq. ft	Yes
9	Living Room	14'0" x 13'2"	184 sq. ft	Yes
10	Wc	5'0" x 6'4"	32 sq. ft	Yes
11	Breakfast Nook	7'8" x 14'0"	108 sq. ft	Yes
12	Kitchen	12'3" x 14'1"	173 sq. ft	Yes

# 57 Arch Street, Westborough, Worcester County, Massachusetts, United States, 01581



## Room Dimensions

Floor 3

Total sqft: 1799

Living area: 1799

#	Room name	Dimensions	Area (sqft)	Counted as Living Area
13	W.i.c.	6'10" x 9'9"	66 sq. ft	Yes
14	Hall	6'10" x 3'2"	21 sq. ft	Yes
15	Den	20'6" x 10'9"	194 sq. ft	Yes
16	Primary Bath	13'0" x 9'9"	118 sq. ft	Yes
17	Bedroom	12'4" x 9'7"	94 sq. ft	Yes
18	Bath	8'5" x 8'11"	65 sq. ft	Yes
19	Bedroom	14'4" x 12'3"	176 sq. ft	Yes
20	Bedroom	10'9" x 14'1"	132 sq. ft	Yes
21	Primary Bedroom	14'10" x 16'9"	249 sq. ft	Yes
22	Bath	10'5" x 10'10"	69 sq. ft	Yes
23	Bedroom	11'11" x 13'2"	129 sq. ft	Yes

Scan captured on Tue, 15 Oct 2024 19:15:15 GMT

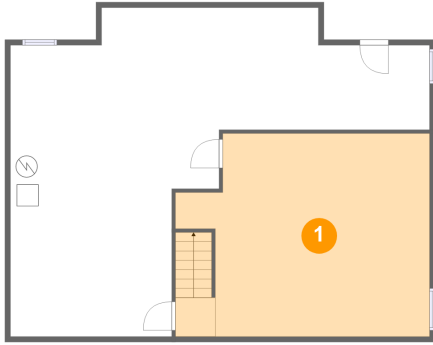
Information is calculated by CubiCasa technology; deemed highly reliable but not guaranteed.

**57 Arch Street, Westborough, Worcester County,  
Massachusetts, United States, 01581**

#	Room name	Dimensions	Area (sqft)	Counted as Living Area
24	Kitchen	8'3" x 13'6"	117 sq. ft	Yes
25	Hall	12'4" x 7'7"	94 sq. ft	Yes

# 57 Arch Street, Westborough, Worcester County, Massachusetts, United States, 01581

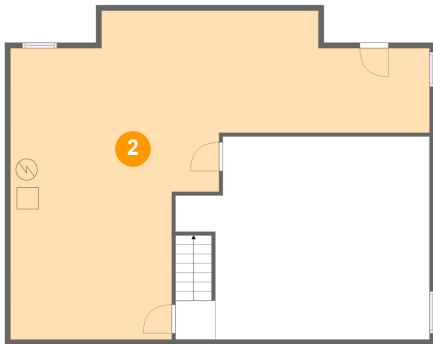
## 1 Floor 1 - Recreation Room



Dimensions: 23'5" x 18'8"  
Area: 410 sq. ft  
Counted as Living Area: No

Heated: Yes  
Finished: Yes  
Enclosed: Yes  
Contiguous: No  
Permitted: Yes  
Wet Space: No  
Addition: No  
Conversion: No

## 2 Floor 1 - Basement

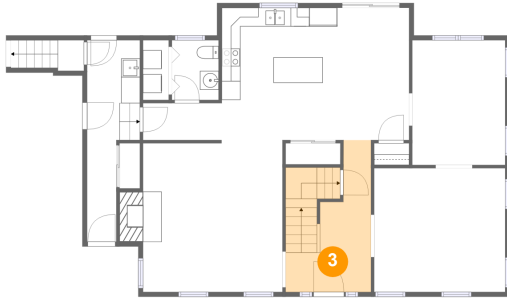


Dimensions: 38'7" x 30'3"  
Area: 675 sq. ft  
Counted as Living Area: No

Heated: Yes  
Finished: No  
Enclosed: Yes  
Contiguous: Yes  
Permitted: Yes  
Wet Space: No  
Addition: No  
Conversion: No

# 57 Arch Street, Westborough, Worcester County, Massachusetts, United States, 01581

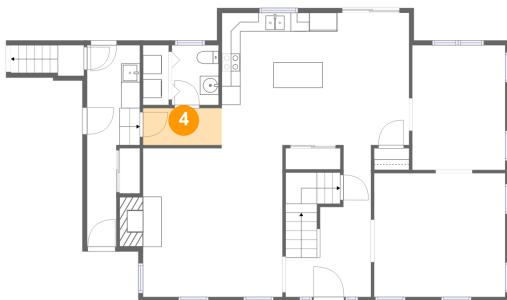
## 3 Floor 2 - Foyer



Dimensions: 9'1" x 16'2"  
Area: 126 sq. ft  
Counted as Living Area:  
Yes

Heated: Yes  
Finished: Yes  
Enclosed: Yes  
Contiguous:  
Yes  
Permitted: Yes  
Wet Space: No  
Addition: No  
Conversion: No

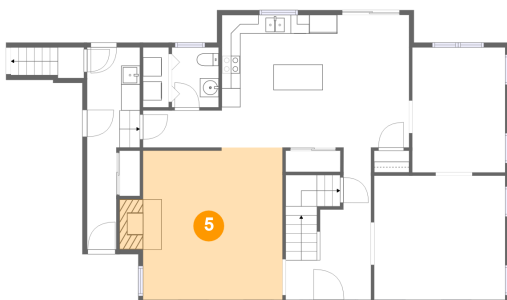
## 4 Floor 2 - Hall



Dimensions: 8'5" x 3'11"  
Area: 33 sq. ft  
Counted as Living Area:  
Yes

Heated: Yes  
Finished: Yes  
Enclosed: Yes  
Contiguous:  
Yes  
Permitted: Yes  
Wet Space: No  
Addition: No  
Conversion: No

## 5 Floor 2 - Family Room

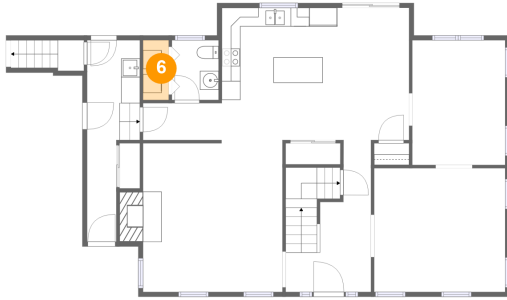


Dimensions: 14'10" x 16'2"  
Area: 251 sq. ft  
Counted as Living Area:  
Yes

Heated: Yes  
Finished: Yes  
Enclosed: Yes  
Contiguous:  
Yes  
Permitted: Yes  
Wet Space: No  
Addition: No  
Conversion: No

# 57 Arch Street, Westborough, Worcester County, Massachusetts, United States, 01581

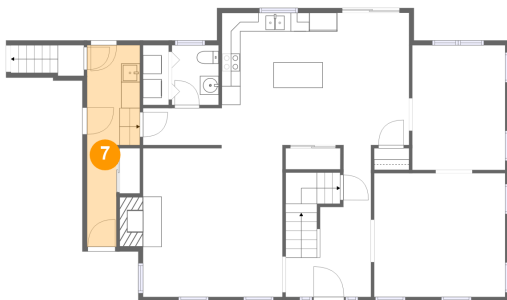
## 6 Floor 2 - Laundry



Dimensions: 2'9" x 6'4"  
Area: 17 sq. ft  
Counted as Living Area:  
Yes

Heated: Yes  
Finished: Yes  
Enclosed: Yes  
Contiguous:  
Yes  
Permitted: Yes  
Wet Space: No  
Addition: No  
Conversion: No

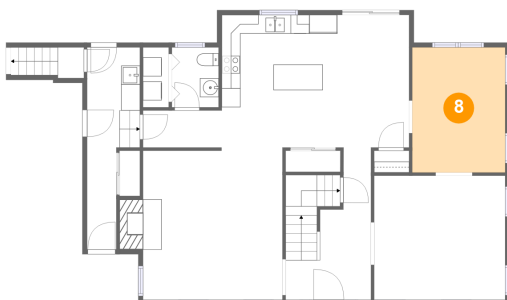
## 7 Floor 2 - Entry



Dimensions: 5'7" x 21'5"  
Area: 94 sq. ft  
Counted as Living Area:  
Yes

Heated: Yes  
Finished: Yes  
Enclosed: Yes  
Contiguous:  
Yes  
Permitted: Yes  
Wet Space: No  
Addition: No  
Conversion: No

## 8 Floor 2 - Dining Room



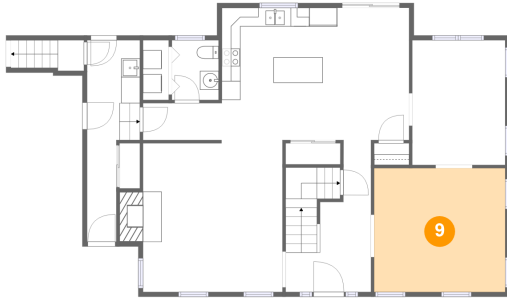
Dimensions: 9'11" x 13'3"  
Area: 132 sq. ft  
Counted as Living Area:  
Yes

Heated: Yes  
Finished: Yes  
Enclosed: Yes  
Contiguous:  
Yes  
Permitted: Yes  
Wet Space: No  
Addition: No  
Conversion: No



# 57 Arch Street, Westborough, Worcester County, Massachusetts, United States, 01581

## 9 Floor 2 - Living Room



Dimensions: 14'0" x 13'2"  
Area: 184 sq. ft  
Counted as Living Area:  
Yes

Heated: Yes  
Finished: Yes  
Enclosed: Yes  
Contiguous:  
Yes  
Permitted: Yes  
Wet Space: No  
Addition: No  
Conversion: No

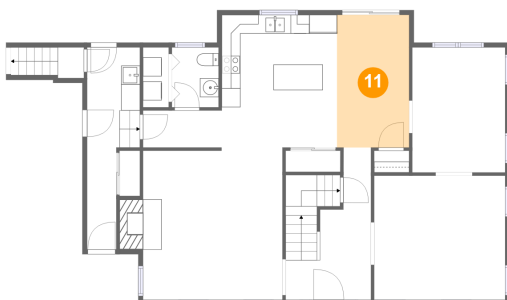
## 10 Floor 2 - Wc



Dimensions: 5'0" x 6'4"  
Area: 32 sq. ft  
Counted as Living Area:  
Yes

Heated: Yes  
Finished: Yes  
Enclosed: Yes  
Contiguous:  
Yes  
Permitted: Yes  
Wet Space: Yes  
Addition: No  
Conversion: No

## 11 Floor 2 - Breakfast Nook

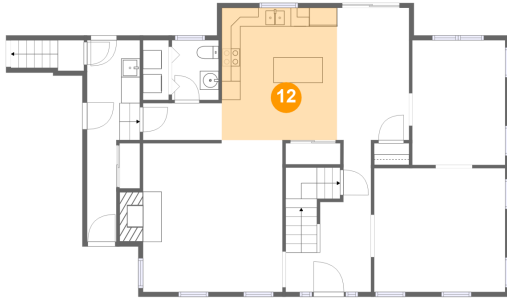


Dimensions: 7'8" x 14'0"  
Area: 108 sq. ft  
Counted as Living Area:  
Yes

Heated: Yes  
Finished: Yes  
Enclosed: Yes  
Contiguous:  
Yes  
Permitted: Yes  
Wet Space: No  
Addition: No  
Conversion: No

# 57 Arch Street, Westborough, Worcester County, Massachusetts, United States, 01581

## 12 Floor 2 - Kitchen



Dimensions: 12'3" x 14'1"  
Area: 173 sq. ft  
Counted as Living Area:  
Yes

Heated: Yes  
Finished: Yes  
Enclosed: Yes  
Contiguous:  
Yes  
Permitted: Yes  
Wet Space: No  
Addition: No  
Conversion: No

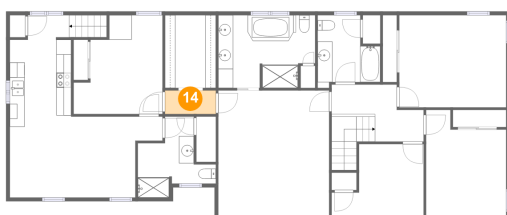
## 13 Floor 3 - W.i.c.



Dimensions: 6'10" x 9'9"  
Area: 66 sq. ft  
Counted as Living Area:  
Yes

Heated: Yes  
Finished: Yes  
Enclosed: Yes  
Contiguous:  
Yes  
Permitted: Yes  
Wet Space: No  
Addition: No  
Conversion: No

## 14 Floor 3 - Hall



Dimensions: 6'10" x 3'2"  
Area: 21 sq. ft  
Counted as Living Area:  
Yes

Heated: Yes  
Finished: Yes  
Enclosed: Yes  
Contiguous:  
Yes  
Permitted: Yes  
Wet Space: No  
Addition: No  
Conversion: No

# 57 Arch Street, Westborough, Worcester County, Massachusetts, United States, 01581

## 15 Floor 3 - Den



Dimensions: 20'6" x 10'9"  
Area: 194 sq. ft  
Counted as Living Area:  
Yes

Heated: Yes  
Finished: Yes  
Enclosed: Yes  
Contiguous:  
Yes  
Permitted: Yes  
Wet Space: No  
Addition: No  
Conversion: No

## 16 Floor 3 - Primary Bath



Dimensions: 13'0" x 9'9"  
Area: 118 sq. ft  
Counted as Living Area:  
Yes

Heated: Yes  
Finished: Yes  
Enclosed: Yes  
Contiguous:  
Yes  
Permitted: Yes  
Wet Space: Yes  
Addition: No  
Conversion: No

## 17 Floor 3 - Bedroom



Dimensions: 12'4" x 9'7"  
Area: 94 sq. ft  
Counted as Living Area:  
Yes

Heated: Yes  
Finished: Yes  
Enclosed: Yes  
Contiguous:  
Yes  
Permitted: Yes  
Wet Space: No  
Addition: No  
Conversion: No

# 57 Arch Street, Westborough, Worcester County, Massachusetts, United States, 01581

## 18 Floor 3 - Bath



Dimensions: 8'5" x 8'11"  
Area: 65 sq. ft  
Counted as Living Area:  
Yes

Heated: Yes  
Finished: Yes  
Enclosed: Yes  
Contiguous:  
Yes  
Permitted: Yes  
Wet Space: Yes  
Addition: No  
Conversion: No

## 19 Floor 3 - Bedroom



Dimensions: 14'4" x 12'3"  
Area: 176 sq. ft  
Counted as Living Area:  
Yes

Heated: Yes  
Finished: Yes  
Enclosed: Yes  
Contiguous:  
Yes  
Permitted: Yes  
Wet Space: No  
Addition: No  
Conversion: No

## 20 Floor 3 - Bedroom



Dimensions: 10'9" x 14'1"  
Area: 132 sq. ft  
Counted as Living Area:  
Yes

Heated: Yes  
Finished: Yes  
Enclosed: Yes  
Contiguous:  
Yes  
Permitted: Yes  
Wet Space: No  
Addition: No  
Conversion: No

# 57 Arch Street, Westborough, Worcester County, Massachusetts, United States, 01581

## 21 Floor 3 - Primary Bedroom



Dimensions: 14'10" x 16'9"  
Area: 249 sq. ft  
Counted as Living Area:  
Yes

Heated: Yes  
Finished: Yes  
Enclosed: Yes  
Contiguous:  
Yes  
Permitted: Yes  
Wet Space: No  
Addition: No  
Conversion: No

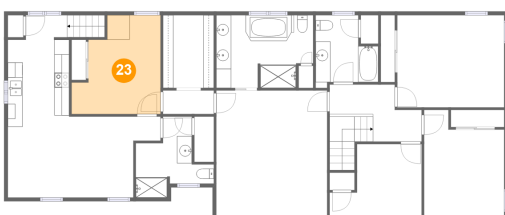
## 22 Floor 3 - Bath



Dimensions: 10'5" x 10'10"  
Area: 69 sq. ft  
Counted as Living Area:  
Yes

Heated: Yes  
Finished: Yes  
Enclosed: Yes  
Contiguous:  
Yes  
Permitted: Yes  
Wet Space: Yes  
Addition: No  
Conversion: No

## 23 Floor 3 - Bedroom



Dimensions: 11'11" x 13'2"  
Area: 129 sq. ft  
Counted as Living Area:  
Yes

Heated: Yes  
Finished: Yes  
Enclosed: Yes  
Contiguous:  
Yes  
Permitted: Yes  
Wet Space: No  
Addition: No  
Conversion: No

**57 Arch Street, Westborough, Worcester County,  
Massachusetts, United States, 01581**

**24 Floor 3 - Kitchen**



Dimensions: 8'3" x 13'6"  
Area: 117 sq. ft  
Counted as Living Area:  
Yes

Heated: Yes  
Finished: Yes  
Enclosed: Yes  
Contiguous:  
Yes  
Permitted: Yes  
Wet Space: No  
Addition: No  
Conversion: No

**25 Floor 3 - Hall**



Dimensions: 12'4" x 7'7"  
Area: 94 sq. ft  
Counted as Living Area:  
Yes

Heated: Yes  
Finished: Yes  
Enclosed: Yes  
Contiguous:  
Yes  
Permitted: Yes  
Wet Space: No  
Addition: No  
Conversion: No