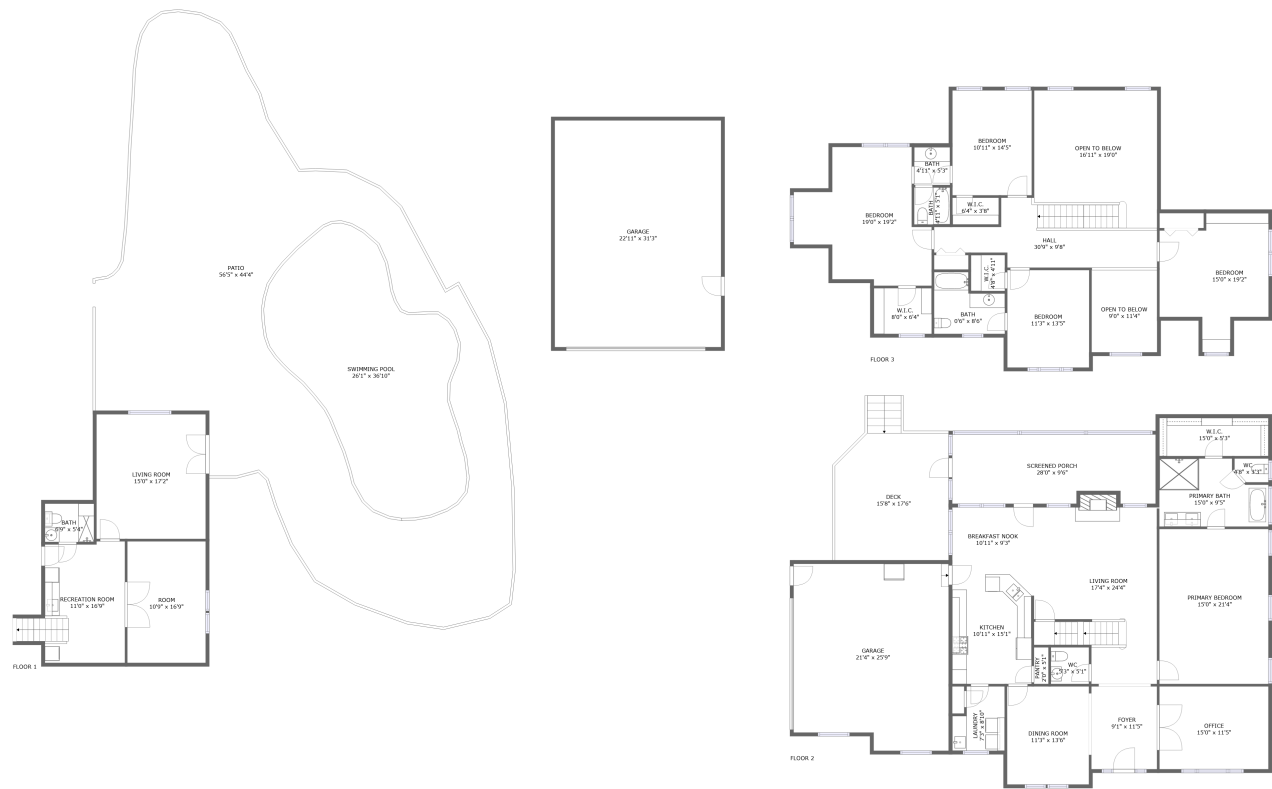




Home report


268 Antrim Avenue, Moore, Spartanburg County, South Carolina,
United States, 29369




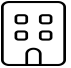
Property summary


**2** Garages


**5** Bedrooms

**4** Bathrooms

**1** Half baths

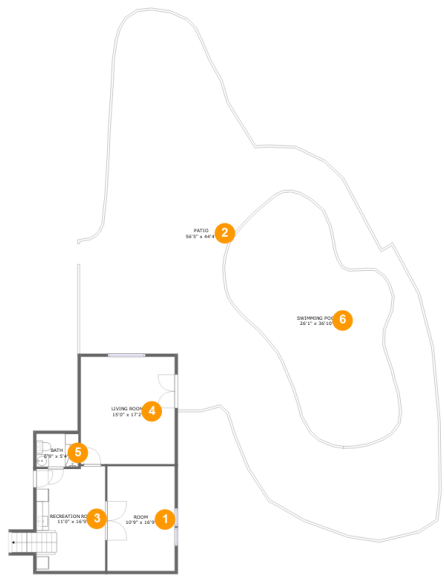
**3** Floors

**3,962** Gross living area sqft

**8,438** Total sqft

Home report

268 Antrim Avenue, Moore, Spartanburg County, South Carolina,
United States, 29369



Room dimensions

Floor 1 Total sqft: 2887 Living area: 745

#		Dimensions	sqft	Counted as living area
1	Room	10'9" x 16'9"	181 sq. ft	Yes
2	Patio	56'5" x 44'4"	2828 sq. ft	No
3	Recreation Room	11'0" x 16'9"	194 sq. ft	Yes
4	Living Room	15'0" x 17'2"	258 sq. ft	Yes
5	Bath	6'9" x 5'4"	36 sq. ft	Yes
6	Swimming Pool	26'1" x 36'10"	686 sq. ft	No

Home report

268 Antrim Avenue, Moore, Spartanburg County, South Carolina,
United States, 29369



Room dimensions

Floor 2 Total sqft: 3759 Living area: 1867

#		Dimensions	sqft	Counted as living area
7	Garage	22'11" x 31'3"	715 sq. ft	No
8	Kitchen	10'11" x 15'1"	164 sq. ft	Yes
9	Dining Room	11'3" x 13'6"	152 sq. ft	Yes
10	Primary Bath	15'0" x 9'5"	125 sq. ft	Yes
11	Screened Porch	28'0" x 9'6"	257 sq. ft	No
12	Garage	21'4" x 25'9"	522 sq. ft	No
13	Laundry	7'3" x 8'10"	56 sq. ft	Yes
14	Deck	15'8" x 17'6"	288 sq. ft	No
15	Living Room	17'4" x 24'4"	381 sq. ft	Yes
16	WC	4'8" x 3'3"	14 sq. ft	Yes
17	Breakfast Nook	10'11" x 9'3"	101 sq. ft	Yes

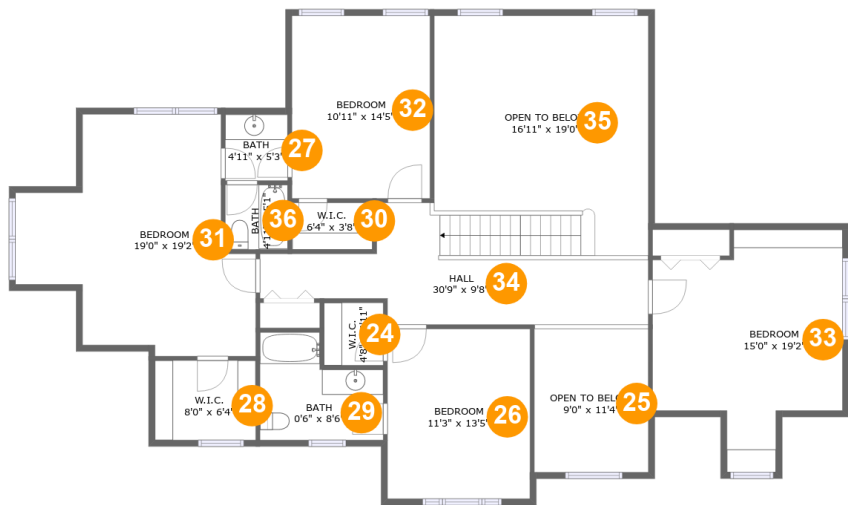
Home report

**268 Antrim Avenue, Moore, Spartanburg County, South Carolina,
United States, 29369**

#		Dimensions	sqft	Counted as living area
18	Office	15'0" x 11'5"	171 sq. ft	Yes
19	Foyer	9'1" x 11'5"	103 sq. ft	Yes
20	Primary Bedroom	15'0" x 21'4"	321 sq. ft	Yes
21	WC	5'3" x 5'1"	26 sq. ft	Yes
22	W.I.C.	15'0" x 5'3"	79 sq. ft	Yes
23	Pantry	2'0" x 5'1"	10 sq. ft	Yes

Home report

268 Antrim Avenue, Moore, Spartanburg County, South Carolina,
United States, 29369



Room dimensions

Floor 3 Total sqft: 1792 Living area: 1350

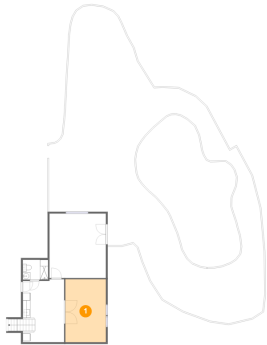
#		Dimensions	sqft	Counted as living area
24	W.I.C.	4'8" x 4'11"	23 sq. ft	Yes
25	Open To Below	9'0" x 11'4"	105 sq. ft	No
26	Bedroom	11'3" x 13'5"	151 sq. ft	Yes
27	Bath	4'11" x 5'3"	26 sq. ft	Yes
28	W.I.C.	8'0" x 6'4"	50 sq. ft	Yes
29	Bath	0'6" x 8'6"	68 sq. ft	Yes
30	W.I.C.	6'4" x 3'8"	24 sq. ft	Yes
31	Bedroom	19'0" x 19'2"	254 sq. ft	Yes
32	Bedroom	10'11" x 14'5"	158 sq. ft	Yes
33	Bedroom	15'0" x 19'2"	206 sq. ft	Yes
34	Hall	30'9" x 9'8"	212 sq. ft	Yes

Home report

268 Antrim Avenue, Moore, Spartanburg County, South Carolina,
United States, 29369

#		Dimensions	sqft	Counted as living area
35	Open To Below	16'11" x 19'0"	276 sq. ft	No
36	Bath	4'11" x 5'1"	25 sq. ft	Yes

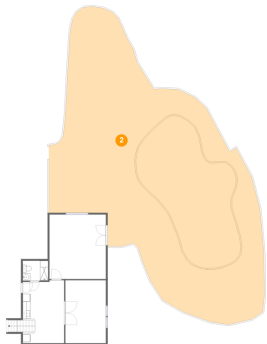
1 Floor 1 - Room



Dimensions: 10'9" x 16'9"
Area: 181 sq. ft
Counted as living area: Yes

Heated: Yes
Finished: Yes
Enclosed: Yes
Contiguous: Yes
Permitted: Yes
Wet space: No
Addition: No
Conversion: No

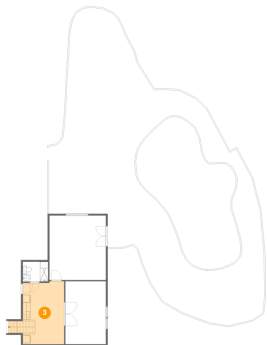
2 Floor 1 - Patio



Dimensions: 56'5" x 44'4"
Area: 2828 sq. ft
Counted as living area: No

Heated: No
Finished: Yes
Enclosed: No
Contiguous: Yes
Permitted: Yes
Wet space: No
Addition: No
Conversion: No

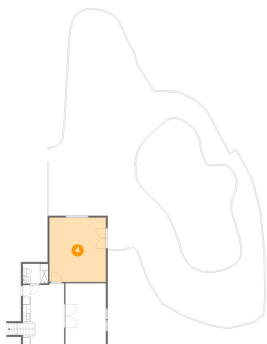
3 Floor 1 - Recreation Room



Dimensions: 11'0" x 16'9"
Area: 194 sq. ft
Counted as living area: Yes

Heated: Yes
Finished: Yes
Enclosed: Yes
Contiguous: Yes
Permitted: Yes
Wet space: No
Addition: No
Conversion: No

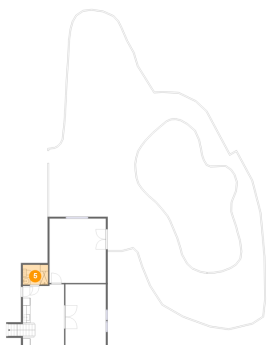
4 Floor 1 - Living Room



Dimensions: 15'0" x 17'2"
Area: 258 sq. ft
Counted as living area: Yes

Heated: Yes
Finished: Yes
Enclosed: Yes
Contiguous: Yes
Permitted: Yes
Wet space: No
Addition: No
Conversion: No

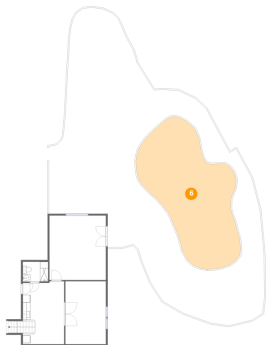
5 Floor 1 - Bath



Dimensions: 6'9" x 5'4"
Area: 36 sq. ft
Counted as living area: Yes

Heated: Yes
Finished: Yes
Enclosed: Yes
Contiguous: Yes
Permitted: Yes
Wet space: Yes
Addition: No
Conversion: No

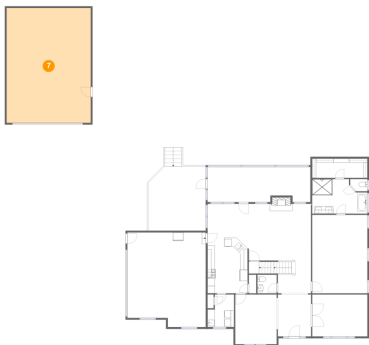
6 Floor 1 - Swimming Pool



Dimensions: 26'1" x 36'10"
Area: 686 sq. ft
Counted as living area: No

Heated: No
Finished: No
Enclosed: No
Contiguous: Yes
Permitted: No
Wet space: No
Addition: No
Conversion: No

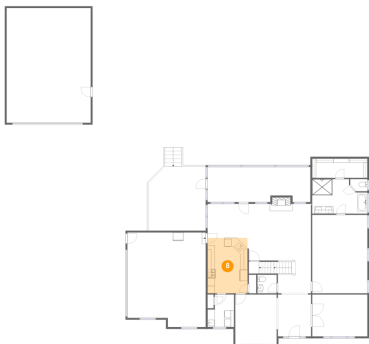
7 Floor 2 - Garage



Dimensions: 22'11" x 31'3"
Area: 715 sq. ft
Counted as living area: No

Heated: No
Finished: No
Enclosed: Yes
Contiguous: Yes
Permitted: Yes
Wet space: No
Addition: No
Conversion: No

8 Floor 2 - Kitchen



Dimensions: 10'11" x 15'1"
Area: 164 sq. ft
Counted as living area: Yes

Heated: Yes
Finished: Yes
Enclosed: Yes
Contiguous: Yes
Permitted: Yes
Wet space: No
Addition: No
Conversion: No

Home report

268 Antrim Avenue, Moore, Spartanburg County, South Carolina,
United States, 29369

9 Floor 2 - Dining Room



Dimensions: 11'3" x 13'6"
Area: 152 sq. ft
Counted as living area: Yes

Heated: Yes
Finished: Yes
Enclosed: Yes
Contiguous: Yes
Permitted: Yes
Wet space: No
Addition: No
Conversion: No

10 Floor 2 - Primary Bath



Dimensions: 15'0" x 9'5"
Area: 125 sq. ft
Counted as living area: Yes

Heated: Yes
Finished: Yes
Enclosed: Yes
Contiguous: Yes
Permitted: Yes
Wet space: Yes
Addition: No
Conversion: No

11 Floor 2 - Screened Porch



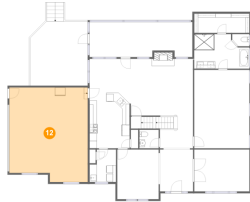
Dimensions: 28'0" x 9'6"
Area: 257 sq. ft
Counted as living area: No

Heated: No
Finished: Yes
Enclosed: No
Contiguous: Yes
Permitted: Yes
Wet space: No
Addition: No
Conversion: No

Home report

268 Antrim Avenue, Moore, Spartanburg County, South Carolina,
United States, 29369

12 Floor 2 - Garage



Dimensions: 21'4" x 25'9"
Area: 522 sq. ft
Counted as living area: No

Heated: No
Finished: No
Enclosed: Yes
Contiguous: Yes
Permitted: Yes
Wet space: No
Addition: No
Conversion: No

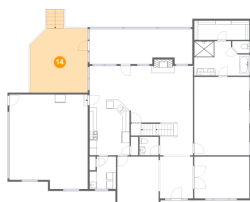
13 Floor 2 - Laundry



Dimensions: 7'3" x 8'10"
Area: 56 sq. ft
Counted as living area: Yes

Heated: Yes
Finished: Yes
Enclosed: Yes
Contiguous: Yes
Permitted: Yes
Wet space: No
Addition: No
Conversion: No

14 Floor 2 - Deck



Dimensions: 15'8" x 17'6"
Area: 288 sq. ft
Counted as living area: No

Heated: No
Finished: Yes
Enclosed: No
Contiguous: Yes
Permitted: Yes
Wet space: No
Addition: No
Conversion: No

15 Floor 2 - Living Room



Dimensions: 17'4" x 24'4"
Area: 381 sq. ft
Counted as living area: Yes

Heated: Yes
Finished: Yes
Enclosed: Yes
Contiguous: Yes
Permitted: Yes
Wet space: No
Addition: No
Conversion: No

16 Floor 2 - WC



Dimensions: 4'8" x 3'3"
Area: 14 sq. ft
Counted as living area: Yes

Heated: Yes
Finished: Yes
Enclosed: Yes
Contiguous: Yes
Permitted: Yes
Wet space: Yes
Addition: No
Conversion: No

17 Floor 2 - Breakfast Nook



Dimensions: 10'11" x 9'3"
Area: 101 sq. ft
Counted as living area: Yes

Heated: Yes
Finished: Yes
Enclosed: Yes
Contiguous: Yes
Permitted: Yes
Wet space: No
Addition: No
Conversion: No

Home report

268 Antrim Avenue, Moore, Spartanburg County, South Carolina,
United States, 29369

18 Floor 2 - Office



Dimensions: 15'0" x 11'5"
Area: 171 sq. ft
Counted as living area: Yes

Heated: Yes
Finished: Yes
Enclosed: Yes
Contiguous: Yes
Permitted: Yes
Wet space: No
Addition: No
Conversion: No

19 Floor 2 - Foyer



Dimensions: 9'1" x 11'5"
Area: 103 sq. ft
Counted as living area: Yes

Heated: Yes
Finished: Yes
Enclosed: Yes
Contiguous: Yes
Permitted: Yes
Wet space: No
Addition: No
Conversion: No

20 Floor 2 - Primary Bedroom



Dimensions: 15'0" x 21'4"
Area: 321 sq. ft
Counted as living area: Yes

Heated: Yes
Finished: Yes
Enclosed: Yes
Contiguous: Yes
Permitted: Yes
Wet space: No
Addition: No
Conversion: No

Home report

268 Antrim Avenue, Moore, Spartanburg County, South Carolina,
United States, 29369

21 Floor 2 - WC



Dimensions: 5'3" x 5'1"
Area: 26 sq. ft
Counted as living area: Yes

Heated: Yes
Finished: Yes
Enclosed: Yes
Contiguous: Yes
Permitted: Yes
Wet space: Yes
Addition: No
Conversion: No

22 Floor 2 - W.I.C.



Dimensions: 15'0" x 5'3"
Area: 79 sq. ft
Counted as living area: Yes

Heated: Yes
Finished: Yes
Enclosed: Yes
Contiguous: Yes
Permitted: Yes
Wet space: No
Addition: No
Conversion: No

23 Floor 2 - Pantry



Dimensions: 2'0" x 5'1"
Area: 10 sq. ft
Counted as living area: Yes

Heated: Yes
Finished: Yes
Enclosed: Yes
Contiguous: Yes
Permitted: Yes
Wet space: No
Addition: No
Conversion: No

Home report

268 Antrim Avenue, Moore, Spartanburg County, South Carolina,
United States, 29369

24 Floor 3 - W.I.C.



Dimensions: 4'8" x 4'11"
Area: 23 sq. ft
Counted as living area: Yes

Heated: Yes
Finished: Yes
Enclosed: Yes
Contiguous: Yes
Permitted: Yes
Wet space: No
Addition: No
Conversion: No

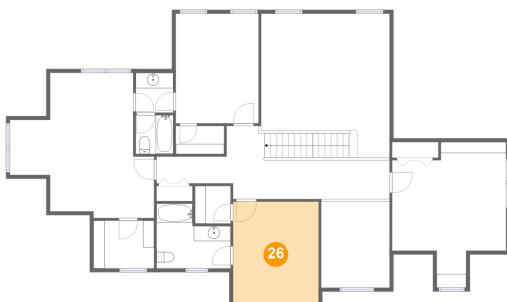
25 Floor 3 - Open To Below



Dimensions: 9'0" x 11'4"
Area: 105 sq. ft
Counted as living area: No

Heated: No
Finished: No
Enclosed: No
Contiguous: Yes
Permitted: No
Wet space: No
Addition: No
Conversion: No

26 Floor 3 - Bedroom



Dimensions: 11'3" x 13'5"
Area: 151 sq. ft
Counted as living area: Yes

Heated: Yes
Finished: Yes
Enclosed: Yes
Contiguous: Yes
Permitted: Yes
Wet space: No
Addition: No
Conversion: No

Home report

268 Antrim Avenue, Moore, Spartanburg County, South Carolina,
United States, 29369

27 Floor 3 - Bath



Dimensions: 4'11" x 5'3"
Area: 26 sq. ft
Counted as living area: Yes

Heated: Yes
Finished: Yes
Enclosed: Yes
Contiguous: Yes
Permitted: Yes
Wet space: Yes
Addition: No
Conversion: No

28 Floor 3 - W.I.C.



Dimensions: 8'0" x 6'4"
Area: 50 sq. ft
Counted as living area: Yes

Heated: Yes
Finished: Yes
Enclosed: Yes
Contiguous: Yes
Permitted: Yes
Wet space: No
Addition: No
Conversion: No

29 Floor 3 - Bath



Dimensions: 0'6" x 8'6"
Area: 68 sq. ft
Counted as living area: Yes

Heated: Yes
Finished: Yes
Enclosed: Yes
Contiguous: Yes
Permitted: Yes
Wet space: Yes
Addition: No
Conversion: No

Home report

268 Antrim Avenue, Moore, Spartanburg County, South Carolina,
United States, 29369

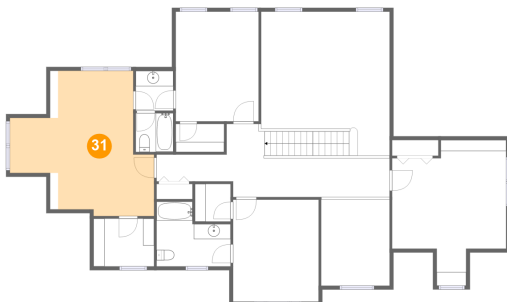
30 Floor 3 - W.I.C.



Dimensions: 6'4" x 3'8"
Area: 24 sq. ft
Counted as living area: Yes

Heated: Yes
Finished: Yes
Enclosed: Yes
Contiguous: Yes
Permitted: Yes
Wet space: No
Addition: No
Conversion: No

31 Floor 3 - Bedroom



Dimensions: 19'0" x 19'2"
Area: 254 sq. ft
Counted as living area: Yes

Heated: Yes
Finished: Yes
Enclosed: Yes
Contiguous: Yes
Permitted: Yes
Wet space: No
Addition: No
Conversion: No

32 Floor 3 - Bedroom



Dimensions: 10'11" x 14'5"
Area: 158 sq. ft
Counted as living area: Yes

Heated: Yes
Finished: Yes
Enclosed: Yes
Contiguous: Yes
Permitted: Yes
Wet space: No
Addition: No
Conversion: No

Home report

268 Antrim Avenue, Moore, Spartanburg County, South Carolina,
United States, 29369

33 Floor 3 - Bedroom



Dimensions: 15'0" x 19'2"
Area: 206 sq. ft
Counted as living area: Yes

Heated: Yes
Finished: Yes
Enclosed: Yes
Contiguous: Yes
Permitted: Yes
Wet space: No
Addition: No
Conversion: No

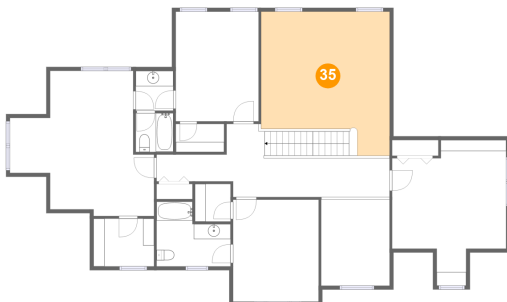
34 Floor 3 - Hall



Dimensions: 30'9" x 9'8"
Area: 212 sq. ft
Counted as living area: Yes

Heated: Yes
Finished: Yes
Enclosed: Yes
Contiguous: Yes
Permitted: Yes
Wet space: No
Addition: No
Conversion: No

35 Floor 3 - Open To Below



Dimensions: 16'11" x 19'0"
Area: 276 sq. ft
Counted as living area: No

Heated: No
Finished: No
Enclosed: No
Contiguous: Yes
Permitted: No
Wet space: No
Addition: No
Conversion: No

268 Antrim Avenue, Moore, Spartanburg County, South Carolina,
United States, 29369

36 Floor 3 - Bath



Dimensions: 4'11" x 5'1"
Area: 25 sq. ft
Counted as living area: Yes

Heated: Yes
Finished: Yes
Enclosed: Yes
Contiguous: Yes
Permitted: Yes
Wet space: Yes
Addition: No
Conversion: No