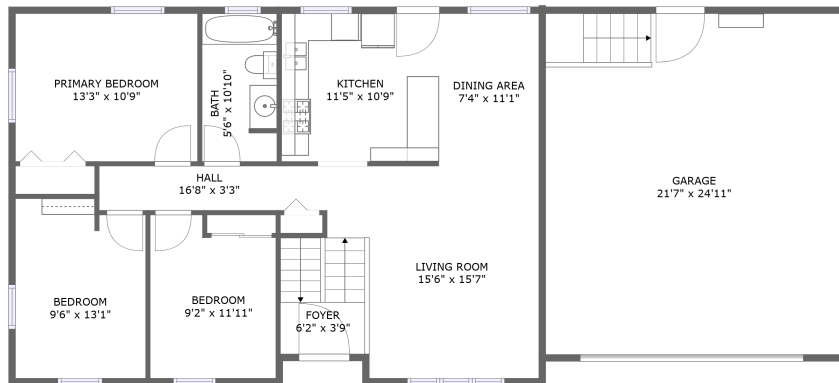
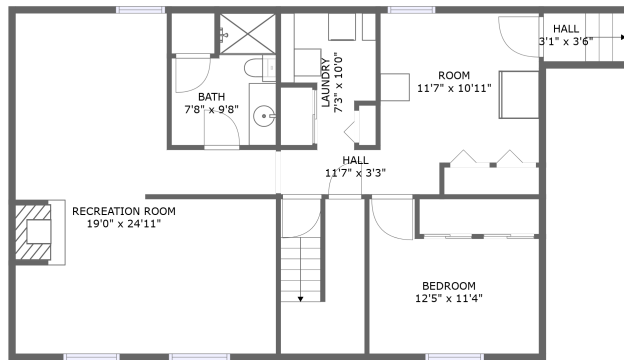


# 1814 Winchester Dr, Champaign, IL, US




FLOOR 2



FLOOR 1

## Property summary

 **1** Garages

 **4** Bedrooms

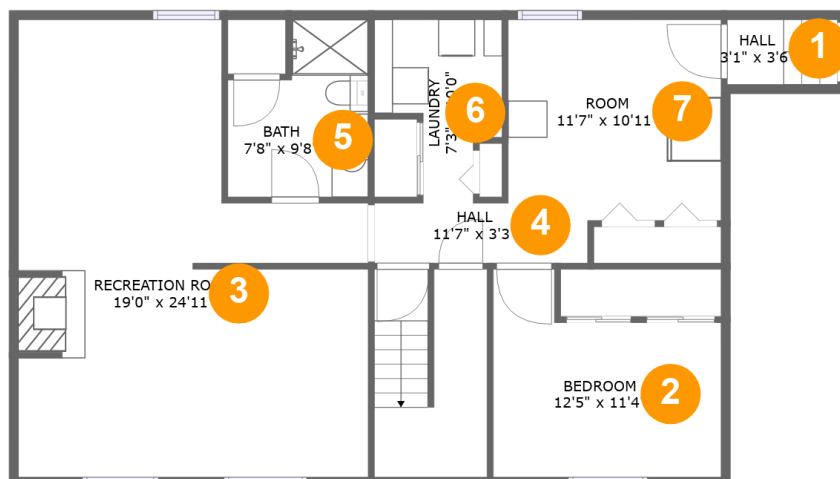
 **2** Bathrooms

 **0** Half baths

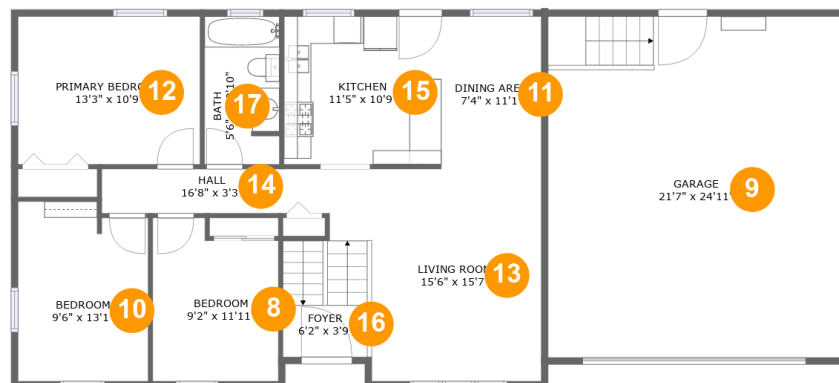
 **2** Floors

 **1,961** Gross living area sqft

 **2,668** Total sqft

**1814 Winchester Dr, Champaign, IL, US****Room dimensions****Floor 1****Total sqft: 1021    Living area: 887**

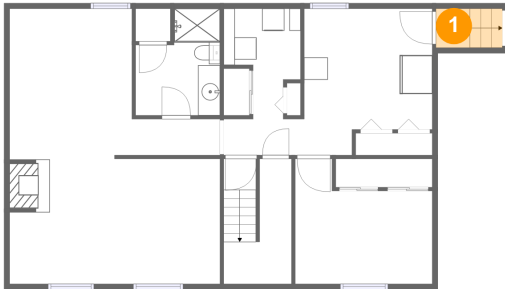
#		Dimensions	sqft	Counted as living area
1	Hall	3'1" x 3'6"	21 sq. ft	Yes
2	Bedroom	12'5" x 11'4"	114 sq. ft	Yes
3	Recreation Room	19'0" x 24'11"	389 sq. ft	Yes
4	Hall	11'7" x 3'3"	36 sq. ft	Yes
5	Bath	7'8" x 9'8"	62 sq. ft	Yes
6	Utility	7'3" x 10'0"	51 sq. ft	Yes
7	Room	11'7" x 10'11"	125 sq. ft	No

**1814 Winchester Dr,Champaign,IL,US****Room dimensions****Floor 2****Total sqft: 1647    Living area: 1074**

#		Dimensions	sqft	Counted as living area
8	Bedroom	9'2" x 11'11"	101 sq. ft	Yes
9	Garage	21'7" x 24'11"	538 sq. ft	No
10	Bedroom	9'6" x 13'1"	120 sq. ft	Yes
11	Dining Room	7'4" x 11'1"	81 sq. ft	Yes
12	Bedroom	13'3" x 10'9"	144 sq. ft	Yes
13	Living Room	15'6" x 15'7"	208 sq. ft	Yes
14	Hall	16'8" x 3'3"	54 sq. ft	Yes
15	Kitchen	11'5" x 10'9"	124 sq. ft	Yes
16	Entry	6'2" x 3'9"	55 sq. ft	Yes
17	Bath	5'6" x 10'10"	58 sq. ft	Yes

# 1814 Winchester Dr,Champaign,IL,US

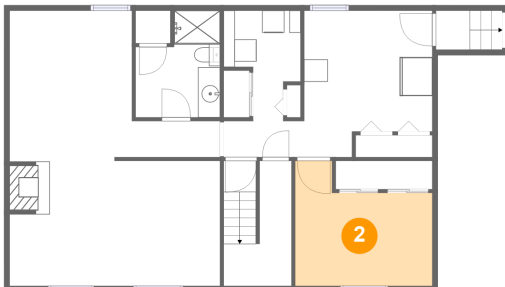
## 1 Floor 1 - Hall



Dimensions: 3'1" x 3'6"  
Area: 21 sq. ft  
Counted as living area: Yes

Heated: Yes  
Finished: Yes  
Enclosed: Yes  
Contiguous: Yes  
Permitted: Yes  
Wet space: No  
Addition: No  
Conversion: No

## 2 Floor 1 - Bedroom

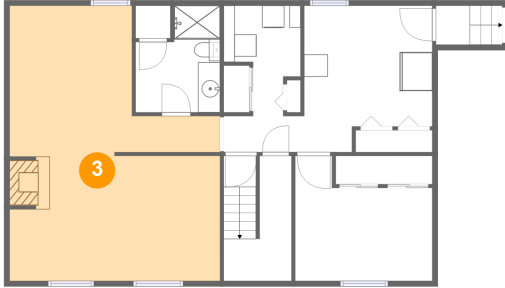


Dimensions: 12'5" x 11'4"  
Area: 114 sq. ft  
Counted as living area: Yes

Heated: Yes  
Finished: Yes  
Enclosed: Yes  
Contiguous: Yes  
Permitted: Yes  
Wet space: No  
Addition: No  
Conversion: No

# 1814 Winchester Dr, Champaign, IL, US

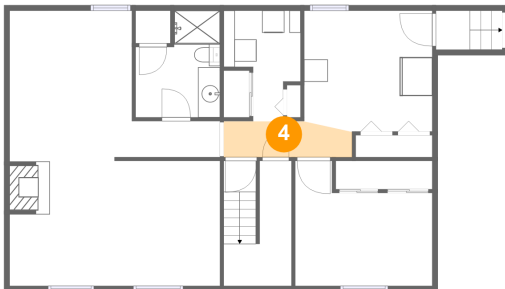
## 3 Floor 1 - Recreation Room



Dimensions: 19'0" x 24'11"  
Area: 389 sq. ft  
Counted as living area: Yes

Heated: Yes  
Finished: Yes  
Enclosed: Yes  
Contiguous: Yes  
Permitted: Yes  
Wet space: No  
Addition: No  
Conversion: No

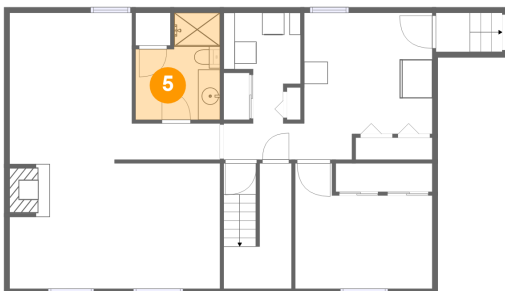
## 4 Floor 1 - Hall



Dimensions: 11'7" x 3'3"  
Area: 36 sq. ft  
Counted as living area: Yes

Heated: Yes  
Finished: Yes  
Enclosed: Yes  
Contiguous: Yes  
Permitted: Yes  
Wet space: No  
Addition: No  
Conversion: No

## 5 Floor 1 - Bath

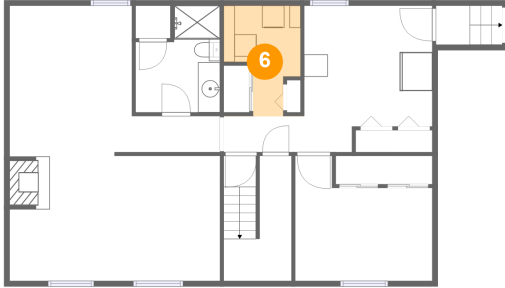


Dimensions: 7'8" x 9'8"  
Area: 62 sq. ft  
Counted as living area: Yes

Heated: Yes  
Finished: Yes  
Enclosed: Yes  
Contiguous: Yes  
Permitted: Yes  
Wet space: Yes  
Addition: No  
Conversion: No

# 1814 Winchester Dr,Champaign,IL,US

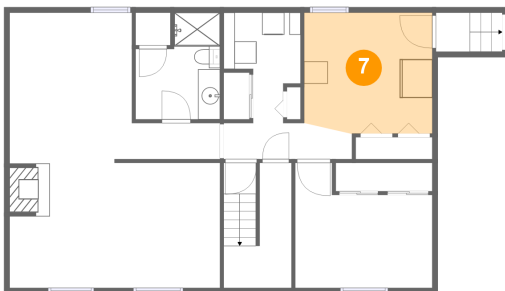
## 6 Floor 1 - Utility



Dimensions: 7'3" x 10'0"  
Area: 51 sq. ft  
Counted as living area: Yes

Heated: Yes  
Finished: Yes  
Enclosed: Yes  
Contiguous: Yes  
Permitted: Yes  
Wet space: No  
Addition: No  
Conversion: No

## 7 Floor 1 - Room



Dimensions: 11'7" x 10'11"  
Area: 125 sq. ft  
Counted as living area: No

Heated: Yes  
Finished: Yes  
Enclosed: Yes  
Contiguous: Yes  
Permitted: Yes  
Wet space: No  
Addition: No  
Conversion: No

## 8 Floor 2 - Bedroom



Dimensions: 9'2" x 11'11"  
Area: 101 sq. ft  
Counted as living area: Yes

Heated: Yes  
Finished: Yes  
Enclosed: Yes  
Contiguous: Yes  
Permitted: Yes  
Wet space: No  
Addition: No  
Conversion: No

# 1814 Winchester Dr, Champaign, IL, US

## 9 Floor 2 - Garage



Dimensions: 21'7" x 24'11"  
Area: 538 sq. ft  
Counted as living area: No

Heated: No  
Finished: No  
Enclosed: Yes  
Contiguous: Yes  
Permitted: Yes  
Wet space: No  
Addition: No  
Conversion: No

## 10 Floor 2 - Bedroom



Dimensions: 9'6" x 13'1"  
Area: 120 sq. ft  
Counted as living area: Yes

Heated: Yes  
Finished: Yes  
Enclosed: Yes  
Contiguous: Yes  
Permitted: Yes  
Wet space: No  
Addition: No  
Conversion: No

## 11 Floor 2 - Dining Room



Dimensions: 7'4" x 11'1"  
Area: 81 sq. ft  
Counted as living area: Yes

Heated: Yes  
Finished: Yes  
Enclosed: Yes  
Contiguous: Yes  
Permitted: Yes  
Wet space: No  
Addition: No  
Conversion: No

# 1814 Winchester Dr,Champaign,IL,US

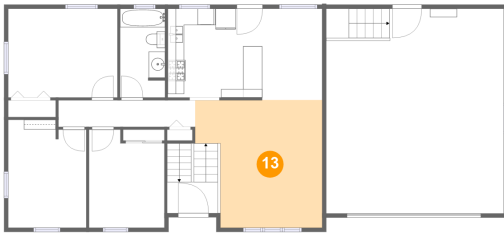
## 12 Floor 2 - Bedroom



Dimensions: 13'3" x 10'9"  
Area: 144 sq. ft  
Counted as living area: Yes

Heated: Yes  
Finished: Yes  
Enclosed: Yes  
Contiguous: Yes  
Permitted: Yes  
Wet space: No  
Addition: No  
Conversion: No

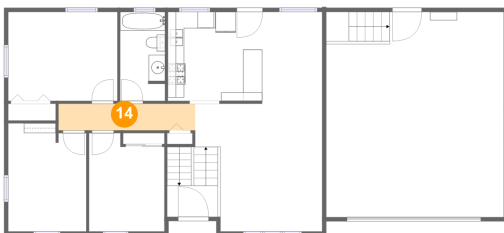
## 13 Floor 2 - Living Room



Dimensions: 15'6" x 15'7"  
Area: 208 sq. ft  
Counted as living area: Yes

Heated: Yes  
Finished: Yes  
Enclosed: Yes  
Contiguous: Yes  
Permitted: Yes  
Wet space: No  
Addition: No  
Conversion: No

## 14 Floor 2 - Hall



Dimensions: 16'8" x 3'3"  
Area: 54 sq. ft  
Counted as living area: Yes

Heated: Yes  
Finished: Yes  
Enclosed: Yes  
Contiguous: Yes  
Permitted: Yes  
Wet space: No  
Addition: No  
Conversion: No



# 1814 Winchester Dr, Champaign, IL, US

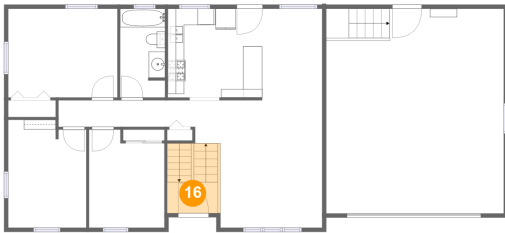
## 15 Floor 2 - Kitchen



Dimensions: 11'5" x 10'9"  
Area: 124 sq. ft  
Counted as living area: Yes

Heated: Yes  
Finished: Yes  
Enclosed: Yes  
Contiguous: Yes  
Permitted: Yes  
Wet space: No  
Addition: No  
Conversion: No

## 16 Floor 2 - Entry



Dimensions: 6'2" x 3'9"  
Area: 55 sq. ft  
Counted as living area: Yes

Heated: Yes  
Finished: Yes  
Enclosed: Yes  
Contiguous: Yes  
Permitted: Yes  
Wet space: No  
Addition: No  
Conversion: No

## 17 Floor 2 - Bath



Dimensions: 5'6" x 10'10"  
Area: 58 sq. ft  
Counted as living area: Yes

Heated: Yes  
Finished: Yes  
Enclosed: Yes  
Contiguous: Yes  
Permitted: Yes  
Wet space: Yes  
Addition: No  
Conversion: No