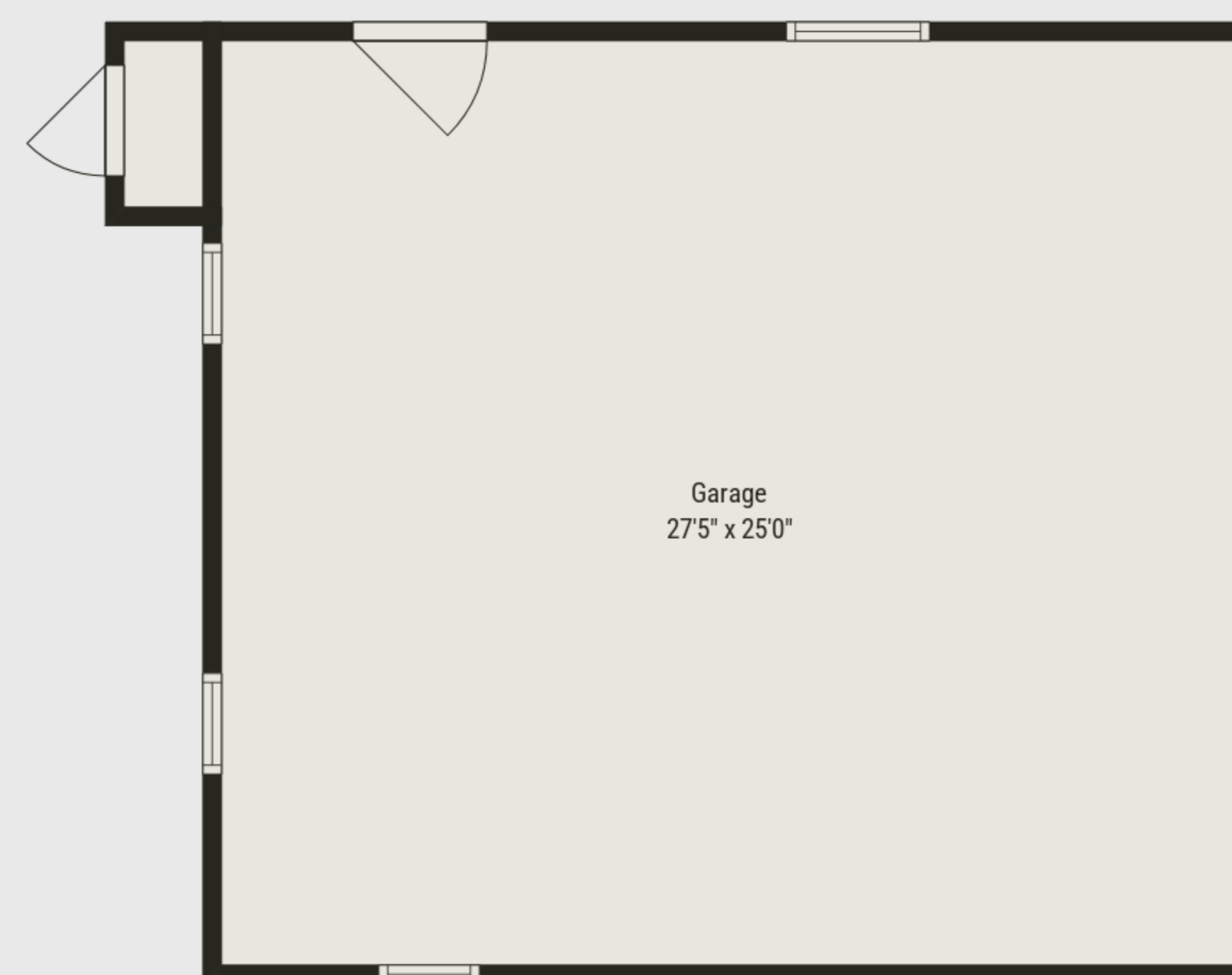


Basement  
24'4" x 21'4"

**TOTAL: 1718 sq. ft**  
 BELOW GROUND: 0 sq. ft, FLOOR 2: 1170 sq. ft, FLOOR 3: 548 sq. ft  
 EXCLUDED AREAS: CRAWL SPACE: 358 sq. ft, BASEMENT: 363 sq. ft, GARAGE: 685 sq. ft,  
 PORCH: 420 sq. ft, PATIO: 242 sq. ft, LOW CEILING: 42 sq. ft

*Please Note: Measurements Shown Are Highly Reliable, But Not Guaranteed.*



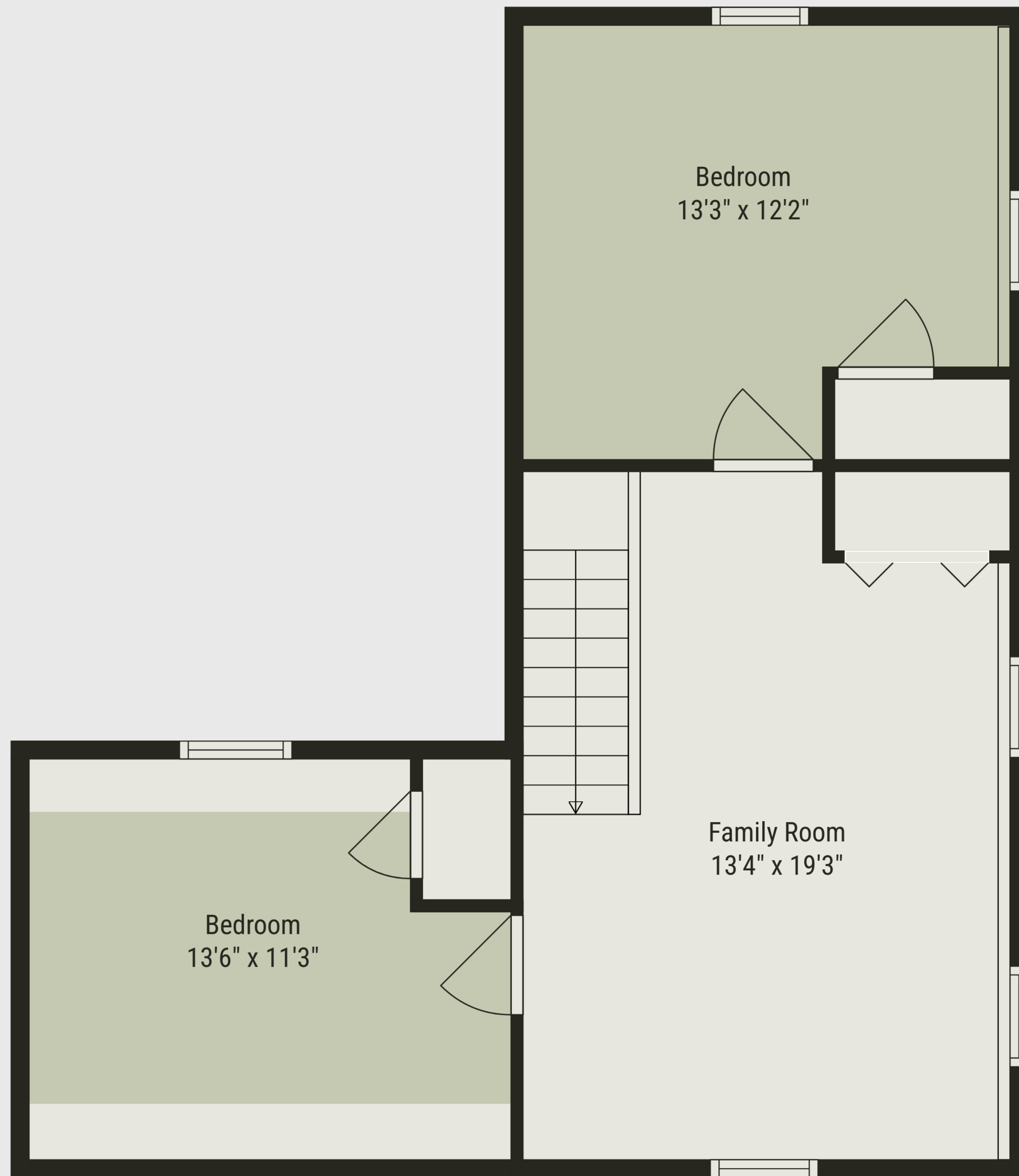


**TOTAL: 1718 sq. ft**

BELOW GROUND: 0 sq. ft, FLOOR 2: 1170 sq. ft, FLOOR 3: 548 sq. ft  
 EXCLUDED AREAS: CRAWL SPACE: 358 sq. ft, BASEMENT: 363 sq. ft, GARAGE: 685 sq. ft,  
 PORCH: 420 sq. ft, PATIO: 242 sq. ft, LOW CEILING: 42 sq. ft

*Please Note: Measurements Shown Are Highly Reliable, But Not Guaranteed.*



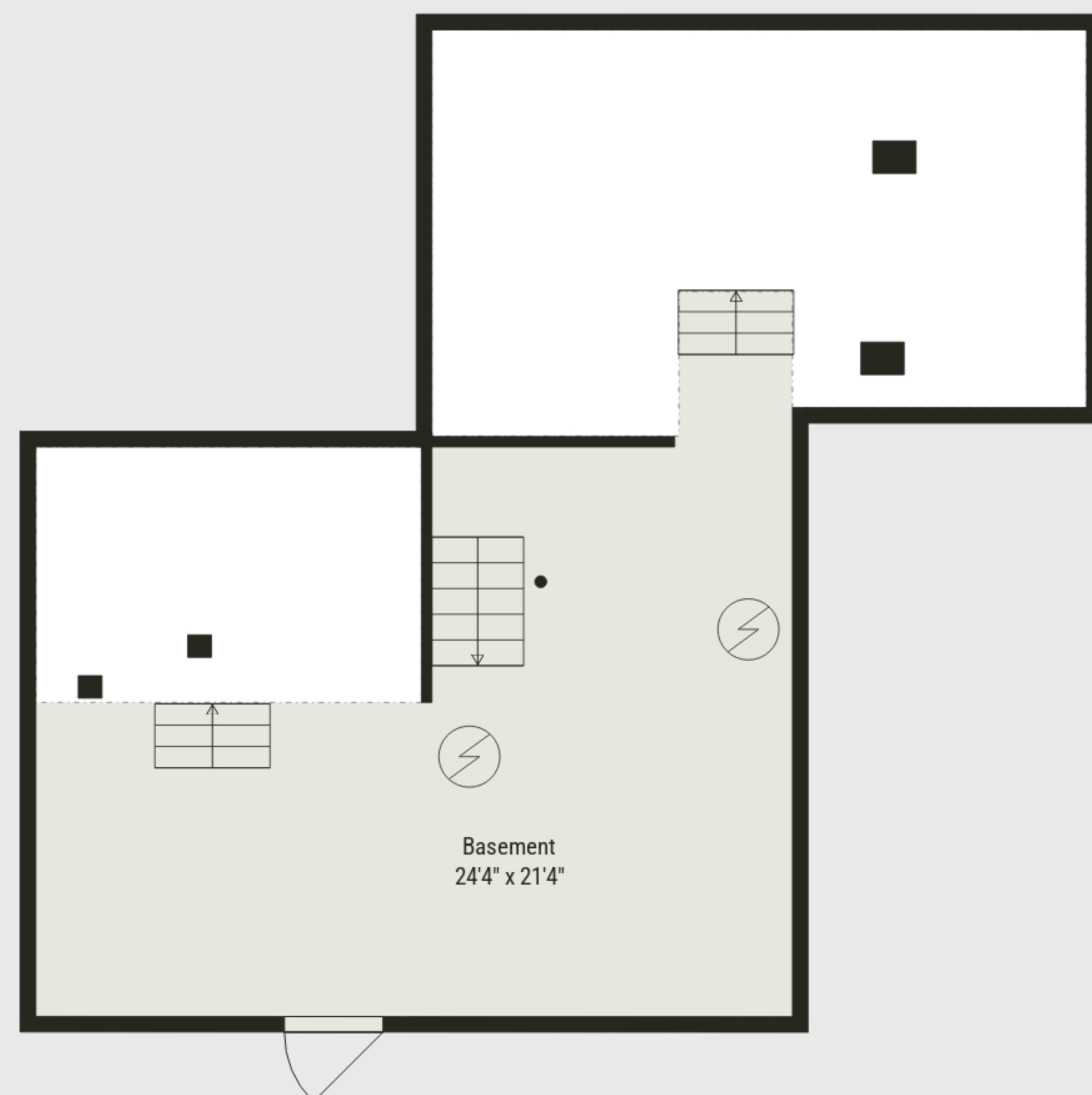


**TOTAL: 1718 sq. ft**

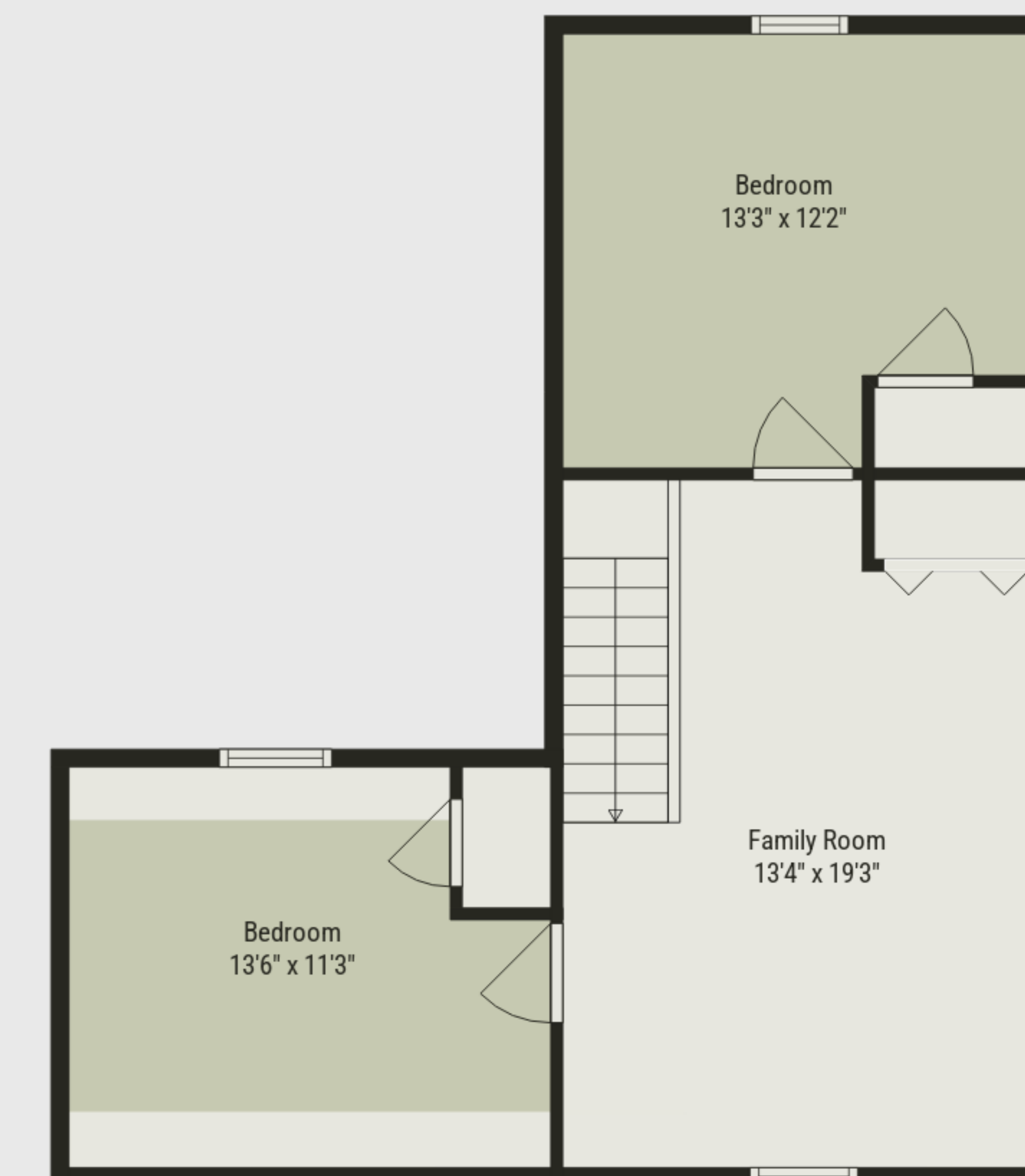
BELOW GROUND: 0 sq. ft, FLOOR 2: 1170 sq. ft, FLOOR 3: 548 sq. ft  
EXCLUDED AREAS: CRAWL SPACE: 358 sq. ft, BASEMENT: 363 sq. ft, GARAGE: 685 sq. ft,  
PORCH: 420 sq. ft, PATIO: 242 sq. ft, LOW CEILING: 42 sq. ft

*Please Note: Measurements Shown Are Highly Reliable, But Not Guaranteed.*

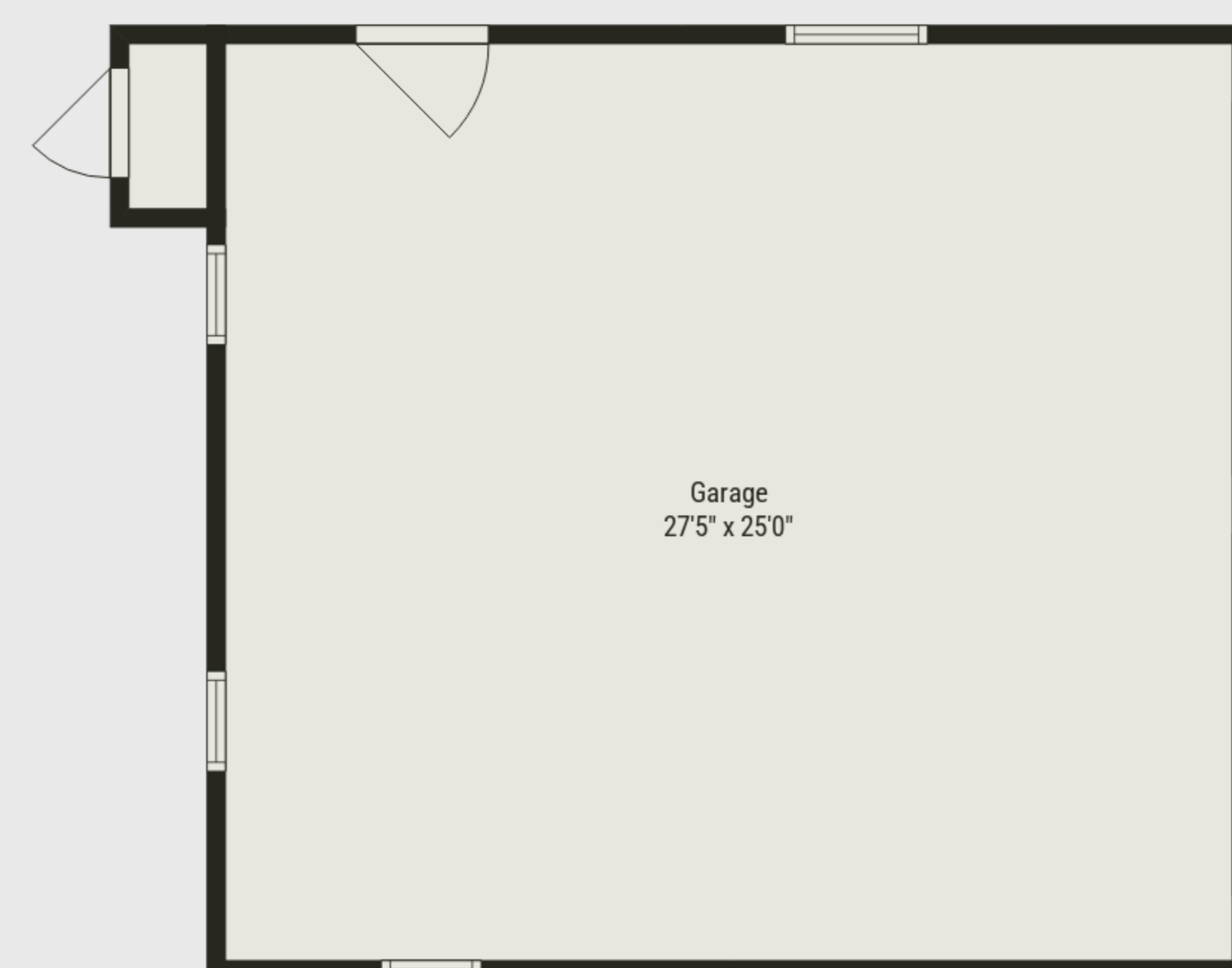




Floor 1



Floor 3



Floor 2

**TOTAL: 1718 sq. ft**  
 BELOW GROUND: 0 sq. ft, FLOOR 2: 1170 sq. ft, FLOOR 3: 548 sq. ft  
 EXCLUDED AREAS: CRAWL SPACE: 358 sq. ft, BASEMENT: 363 sq. ft, GARAGE: 685 sq. ft,  
 PORCH: 420 sq. ft, PATIO: 242 sq. ft, LOW CEILING: 42 sq. ft

*Please Note: Measurements Shown Are Highly Reliable, But Not Guaranteed.*

