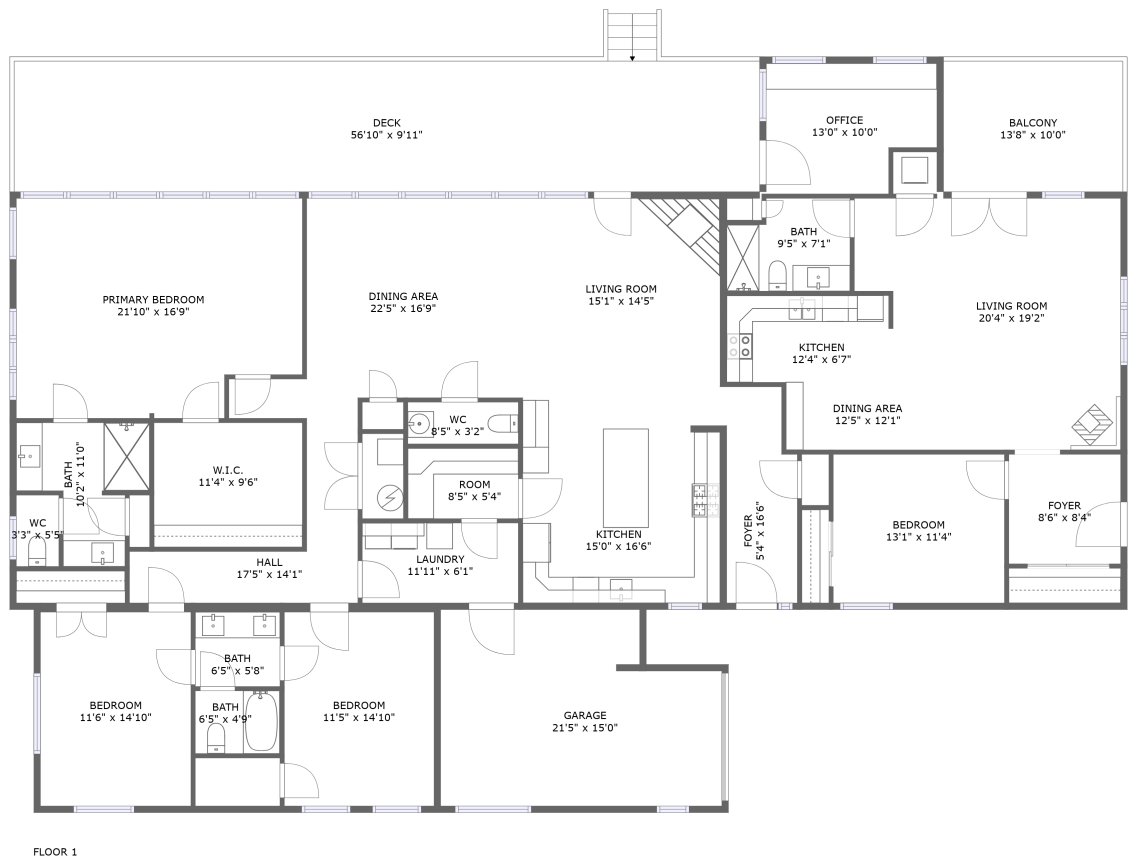
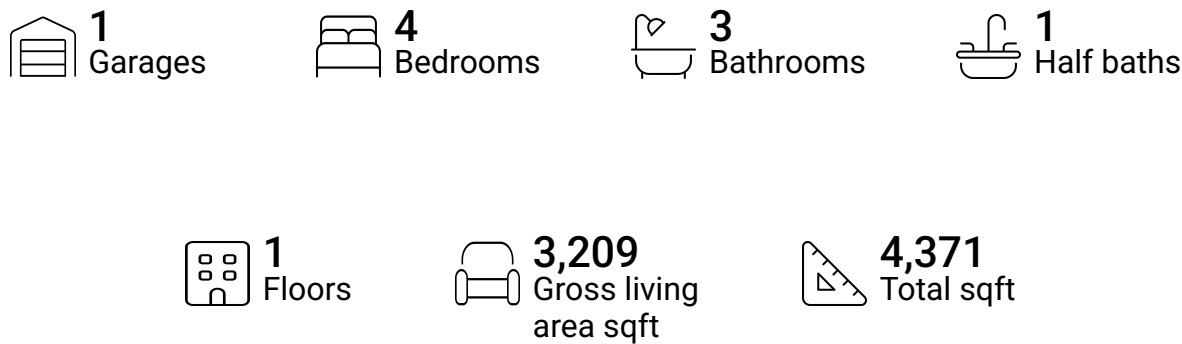


Home report

1661 Cerro Gordo Rd,Santa Fe,NM,US

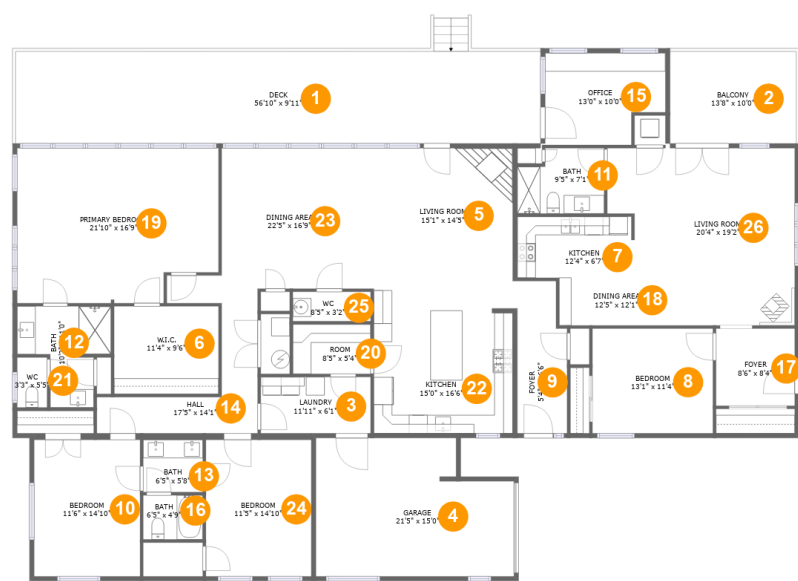


Property summary



Home report

1661 Cerro Gordo Rd,Santa Fe,NM,US



Room dimensions

Floor 1

Total sqft: 4371

Living area: 3209

#		Dimensions	sqft	Counted as living area
1	Deck	56'10" x 9'11"	580 sq. ft	No
2	Balcony	13'8" x 10'0"	136 sq. ft	No
3	Laundry	11'11" x 6'1"	73 sq. ft	Yes
4	Garage	21'5" x 15'0"	291 sq. ft	No
5	Living Room	15'1" x 14'5"	216 sq. ft	Yes
6	W.I.C.	11'4" x 9'6"	107 sq. ft	Yes
7	Kitchen	12'4" x 6'7"	82 sq. ft	Yes
8	Bedroom	13'1" x 11'4"	148 sq. ft	Yes
9	Foyer	5'4" x 16'6"	84 sq. ft	Yes
10	Bedroom	11'6" x 14'10"	170 sq. ft	Yes
11	Bath	9'5" x 7'1"	61 sq. ft	Yes

Home report

1661 Cerro Gordo Rd,Santa Fe,NM,US

#		Dimensions	sqft	Counted as living area
12	Bath	10'2" x 11'0"	79 sq. ft	Yes
13	Bath	6'5" x 5'8"	37 sq. ft	Yes
14	Hall	17'5" x 14'1"	108 sq. ft	Yes
15	Office	13'0" x 10'0"	117 sq. ft	No
16	Bath	6'5" x 4'9"	31 sq. ft	Yes
17	Foyer	8'6" x 8'4"	71 sq. ft	Yes
18	Dining Area	12'5" x 12'1"	96 sq. ft	Yes
19	Primary Bedroom	21'10" x 16'9"	346 sq. ft	Yes
20	Room	8'5" x 5'4"	45 sq. ft	Yes
21	WC	3'3" x 5'5"	18 sq. ft	Yes
22	Kitchen	15'0" x 16'6"	247 sq. ft	Yes
23	Dining Area	22'5" x 16'9"	275 sq. ft	Yes
24	Bedroom	11'5" x 14'10"	169 sq. ft	Yes
25	WC	8'5" x 3'2"	27 sq. ft	Yes
26	Living Room	20'4" x 19'2"	302 sq. ft	Yes

1 Floor 1 - Deck



Dimensions: 56'10" x 9'11"
Area: 580 sq. ft
Counted as living area: No

Heated: No
Finished: Yes
Enclosed: No
Contiguous: Yes
Permitted: Yes
Wet space: No
Addition: No
Conversion: No

2 Floor 1 - Balcony



Dimensions: 13'8" x 10'0"
Area: 136 sq. ft
Counted as living area: No

Heated: No
Finished: Yes
Enclosed: No
Contiguous: Yes
Permitted: Yes
Wet space: No
Addition: No
Conversion: No

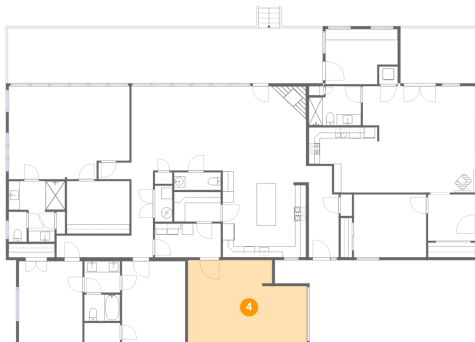
3 Floor 1 - Laundry



Dimensions: 11'11" x 6'1"
Area: 73 sq. ft
Counted as living area: Yes

Heated: Yes
Finished: Yes
Enclosed: Yes
Contiguous: Yes
Permitted: Yes
Wet space: No
Addition: No
Conversion: No

4 Floor 1 - Garage



Dimensions: 21'5" x 15'0"
Area: 291 sq. ft
Counted as living area: No

Heated: No
Finished: No
Enclosed: Yes
Contiguous: Yes
Permitted: Yes
Wet space: No
Addition: No
Conversion: No

5 Floor 1 - Living Room



Dimensions: 15'1" x 14'5"
Area: 216 sq. ft
Counted as living area: Yes

Heated: Yes
Finished: Yes
Enclosed: Yes
Contiguous: Yes
Permitted: Yes
Wet space: No
Addition: No
Conversion: No

6 Floor 1 - W.I.C.



Dimensions: 11'4" x 9'6"
Area: 107 sq. ft
Counted as living area: Yes

Heated: Yes
Finished: Yes
Enclosed: Yes
Contiguous: Yes
Permitted: Yes
Wet space: No
Addition: No
Conversion: No

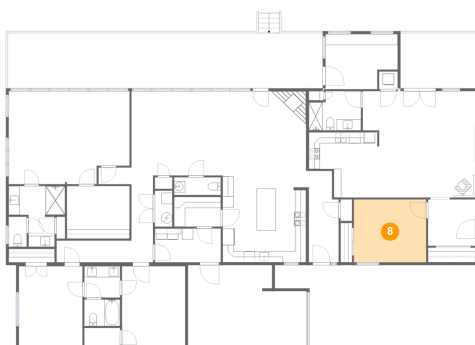
7 Floor 1 - Kitchen



Dimensions: 12'4" x 6'7"
Area: 82 sq. ft
Counted as living area: Yes

Heated: Yes
Finished: Yes
Enclosed: Yes
Contiguous: Yes
Permitted: Yes
Wet space: No
Addition: No
Conversion: No

8 Floor 1 - Bedroom



Dimensions: 13'1" x 11'4"
Area: 148 sq. ft
Counted as living area: Yes

Heated: Yes
Finished: Yes
Enclosed: Yes
Contiguous: Yes
Permitted: Yes
Wet space: No
Addition: No
Conversion: No

9 Floor 1 - Foyer



Dimensions: 5'4" x 16'6"
Area: 84 sq. ft
Counted as living area: Yes

Heated: Yes
Finished: Yes
Enclosed: Yes
Contiguous: Yes
Permitted: Yes
Wet space: No
Addition: No
Conversion: No

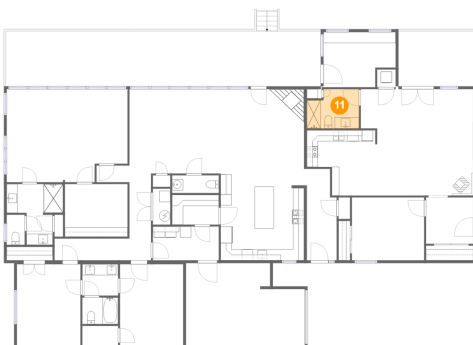
10 Floor 1 - Bedroom



Dimensions: 11'6" x 14'10"
Area: 170 sq. ft
Counted as living area: Yes

Heated: Yes
Finished: Yes
Enclosed: Yes
Contiguous: Yes
Permitted: Yes
Wet space: No
Addition: No
Conversion: No

11 Floor 1 - Bath



Dimensions: 9'5" x 7'1"
Area: 61 sq. ft
Counted as living area: Yes

Heated: Yes
Finished: Yes
Enclosed: Yes
Contiguous: Yes
Permitted: Yes
Wet space: Yes
Addition: No
Conversion: No

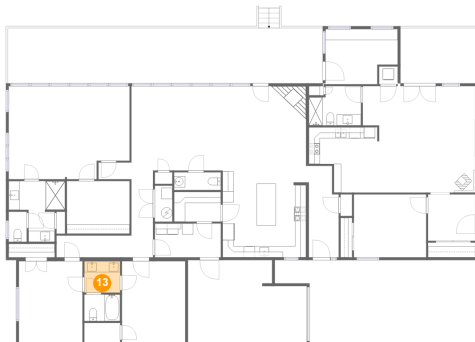
12 Floor 1 - Bath



Dimensions: 10'2" x 11'0"
Area: 79 sq. ft
Counted as living area: Yes

Heated: Yes
Finished: Yes
Enclosed: Yes
Contiguous: Yes
Permitted: Yes
Wet space: Yes
Addition: No
Conversion: No

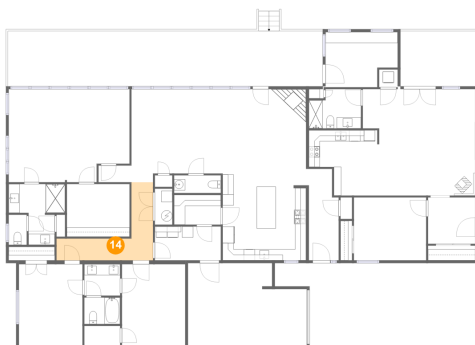
13 Floor 1 - Bath



Dimensions: 6'5" x 5'8"
Area: 37 sq. ft
Counted as living area: Yes

Heated: Yes
Finished: Yes
Enclosed: Yes
Contiguous: Yes
Permitted: Yes
Wet space: Yes
Addition: No
Conversion: No

14 Floor 1 - Hall



Dimensions: 17'5" x 14'1"
Area: 108 sq. ft
Counted as living area: Yes

Heated: Yes
Finished: Yes
Enclosed: Yes
Contiguous: Yes
Permitted: Yes
Wet space: No
Addition: No
Conversion: No

15 Floor 1 - Office



Dimensions: 13'0" x 10'0"
Area: 117 sq. ft
Counted as living area: No

Heated: Yes
Finished: Yes
Enclosed: Yes
Contiguous: No
Permitted: Yes
Wet space: No
Addition: No
Conversion: No

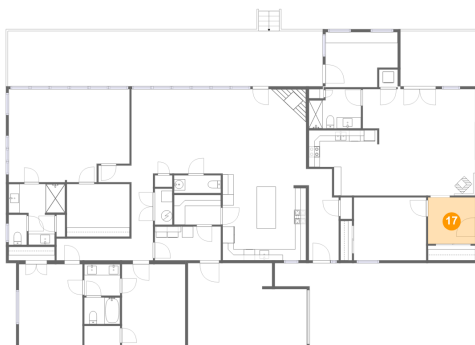
16 Floor 1 - Bath



Dimensions: 6'5" x 4'9"
Area: 31 sq. ft
Counted as living area: Yes

Heated: Yes
Finished: Yes
Enclosed: Yes
Contiguous: Yes
Permitted: Yes
Wet space: Yes
Addition: No
Conversion: No

17 Floor 1 - Foyer



Dimensions: 8'6" x 8'4"
Area: 71 sq. ft
Counted as living area: Yes

Heated: Yes
Finished: Yes
Enclosed: Yes
Contiguous: Yes
Permitted: Yes
Wet space: No
Addition: No
Conversion: No

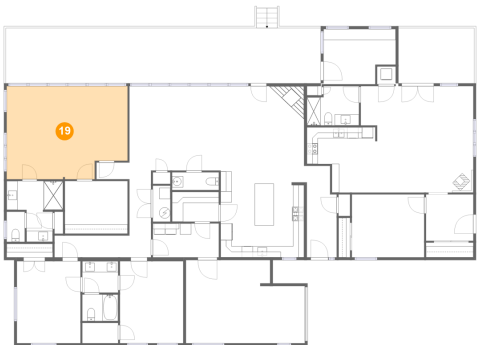
18 Floor 1 - Dining Area



Dimensions: 12'5" x 12'1"
Area: 96 sq. ft
Counted as living area: Yes

Heated: Yes
Finished: Yes
Enclosed: Yes
Contiguous: Yes
Permitted: Yes
Wet space: No
Addition: No
Conversion: No

19 Floor 1 - Primary Bedroom



Dimensions: 21'10" x 16'9"
Area: 346 sq. ft
Counted as living area: Yes

Heated: Yes
Finished: Yes
Enclosed: Yes
Contiguous: Yes
Permitted: Yes
Wet space: No
Addition: No
Conversion: No

20 Floor 1 - Room



Dimensions: 8'5" x 5'4"
Area: 45 sq. ft
Counted as living area: Yes

Heated: Yes
Finished: Yes
Enclosed: Yes
Contiguous: Yes
Permitted: Yes
Wet space: No
Addition: No
Conversion: No

21 Floor 1 - WC



Dimensions: 3'3" x 5'5"
Area: 18 sq. ft
Counted as living area: Yes

Heated: Yes
Finished: Yes
Enclosed: Yes
Contiguous: Yes
Permitted: Yes
Wet space: Yes
Addition: No
Conversion: No

22 Floor 1 - Kitchen



Dimensions: 15'0" x 16'6"
Area: 247 sq. ft
Counted as living area: Yes

Heated: Yes
Finished: Yes
Enclosed: Yes
Contiguous: Yes
Permitted: Yes
Wet space: No
Addition: No
Conversion: No

23 Floor 1 - Dining Area



Dimensions: 22'5" x 16'9"
Area: 275 sq. ft
Counted as living area: Yes

Heated: Yes
Finished: Yes
Enclosed: Yes
Contiguous: Yes
Permitted: Yes
Wet space: No
Addition: No
Conversion: No

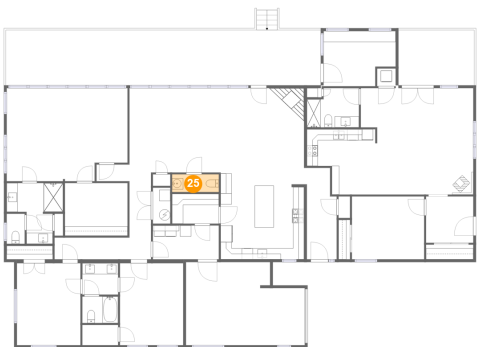
24 Floor 1 - Bedroom



Dimensions: 11'5" x 14'10"
Area: 169 sq. ft
Counted as living area: Yes

Heated: Yes
Finished: Yes
Enclosed: Yes
Contiguous: Yes
Permitted: Yes
Wet space: No
Addition: No
Conversion: No

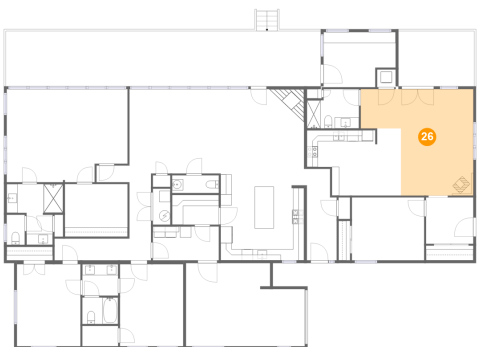
25 Floor 1 - WC



Dimensions: 8'5" x 3'2"
Area: 27 sq. ft
Counted as living area: Yes

Heated: Yes
Finished: Yes
Enclosed: Yes
Contiguous: Yes
Permitted: Yes
Wet space: Yes
Addition: No
Conversion: No

26 Floor 1 - Living Room



Dimensions: 20'4" x 19'2"
Area: 302 sq. ft
Counted as living area: Yes

Heated: Yes
Finished: Yes
Enclosed: Yes
Contiguous: Yes
Permitted: Yes
Wet space: No
Addition: No
Conversion: No