

Home report

182 Humphrey Lane, Falling Waters, Berkeley County, West Virginia, United States, 25419



Total Area: 2622 sq. ft

Below Ground: 15 sq. ft, Floor 2: 1774 sq. ft, Floor 3: 833 sq. ft

Excluded: Basement 849 sq. ft, Bedroom 221 sq. ft, Outdoor Porch 140 sq. ft, Outdoor Deck 299 sq. ft, Fireplace 6 sq. ft, Walls: 235 sq. ft

Property summary

 **3** Floors

 **4** Bedrooms

 **2** Bathrooms

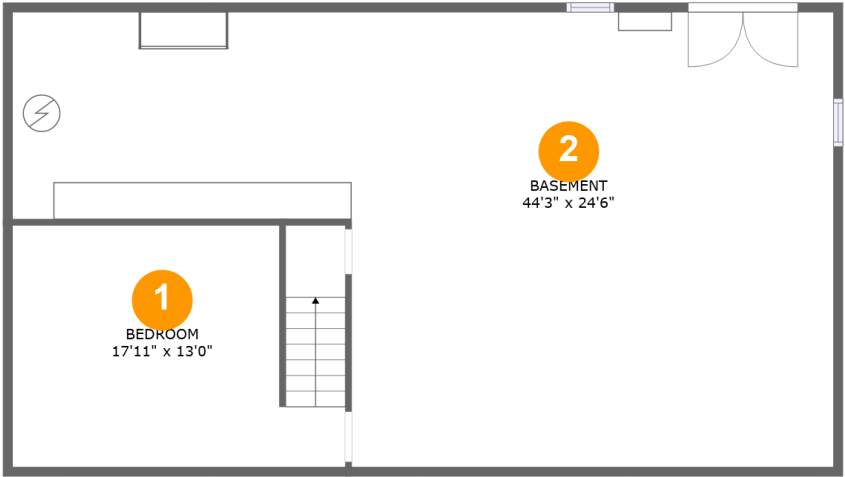
Home report

182 Humphrey Lane, Falling Waters, Berkeley County, West Virginia, United States, 25419

 **1**
Half baths

 **1**
Garages

182 Humphrey Lane, Falling Waters, Berkeley County, West Virginia, United States, 25419



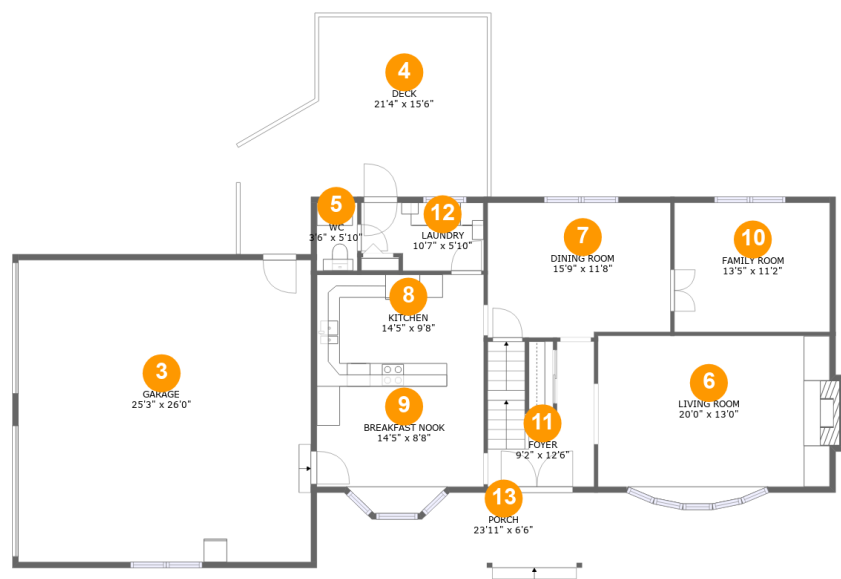
Room dimensions

Floor 1 Below ground Total:15sqft Excluded: 1070sqft

#		Max Dimensions	sqft	Included
1	Bedroom	17'11" x 13'0"	219 sq. ft	No
2	Basement	44'3" x 24'6"	840 sq. ft	No

Home report

182 Humphrey Lane, Falling Waters, Berkeley County, West Virginia, United States, 25419



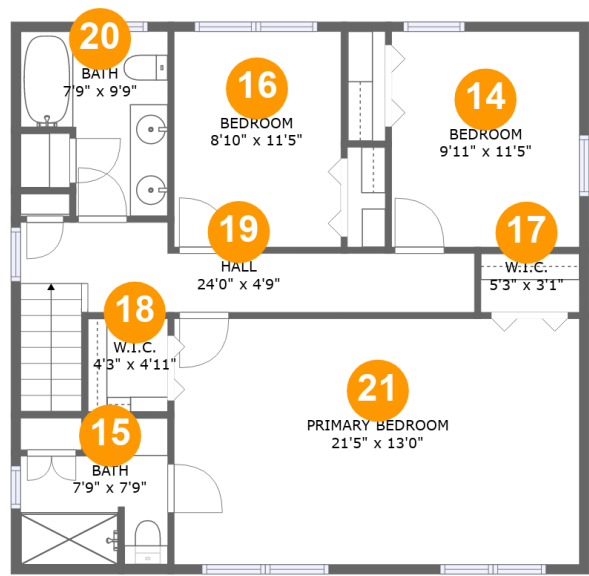
Room dimensions

Floor 2 Total:1774sqft Excluded: 445sqft

#		Max Dimensions	sqft	Included
3	Garage	25'3" x 26'0"	658 sq. ft	Yes
4	Deck	21'4" x 15'6"	299 sq. ft	No
5	WC	3'6" x 5'10"	21 sq. ft	Yes
6	Living Room	20'0" x 13'0"	277 sq. ft	Yes
7	Dining Room	15'9" x 11'8"	181 sq. ft	Yes
8	Kitchen	14'5" x 9'8"	139 sq. ft	Yes
9	Breakfast Nook	14'5" x 8'8"	139 sq. ft	Yes
10	Family Room	13'5" x 11'2"	150 sq. ft	Yes
11	Foyer	9'2" x 12'6"	98 sq. ft	Yes
12	Laundry	10'7" x 5'10"	57 sq. ft	Yes
13	Porch	23'11" x 6'6"	140 sq. ft	No

Home report

182 Humphrey Lane, Falling Waters, Berkeley County, West Virginia, United States, 25419



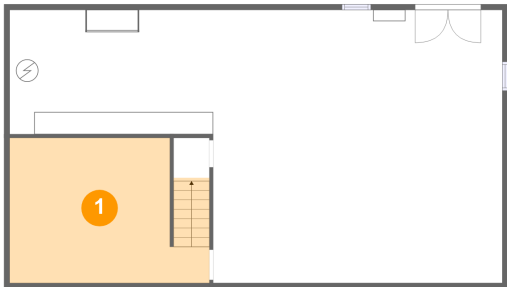
Room dimensions

Floor 3 Total:833sqft Excluded: 0sqft

#		Max Dimensions	sqft	Included
14	Bedroom	9'11" x 11'5"	113 sq. ft	Yes
15	Bath	7'9" x 7'9"	52 sq. ft	Yes
16	Bedroom	8'10" x 11'5"	100 sq. ft	Yes
17	W.I.C.	5'3" x 3'1"	16 sq. ft	Yes
18	W.I.C.	4'3" x 4'11"	21 sq. ft	Yes
19	Hall	24'0" x 4'9"	104 sq. ft	Yes
20	Bath	7'9" x 9'9"	62 sq. ft	Yes
21	Primary Bedroom	21'5" x 13'0"	278 sq. ft	Yes

182 Humphrey Lane, Falling Waters, Berkeley County, West Virginia, United States, 25419

1 Floor 1 - Bedroom



Max Dimensions: 17'11" x 13'0"
Calculated Area: 219 sq. ft
Included: No

Heated: Yes
Finished: No
Enclosed: Yes
Contiguous: Yes
Permitted: Yes
Wet space: No
Addition: No
Conversion: No

2 Floor 1 - Basement

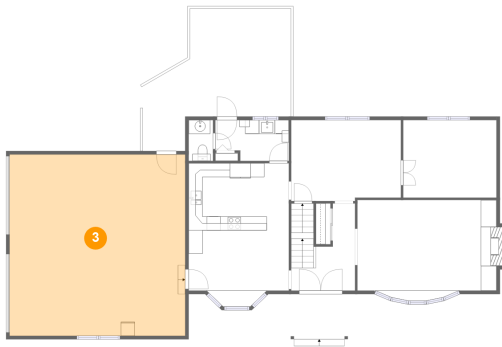


Max Dimensions: 44'3" x 24'6"
Calculated Area: 840 sq. ft
Included: No

Heated: Yes
Finished: No
Enclosed: Yes
Contiguous: Yes
Permitted: Yes
Wet space: No
Addition: No
Conversion: No

182 Humphrey Lane, Falling Waters, Berkeley County, West Virginia, United States, 25419

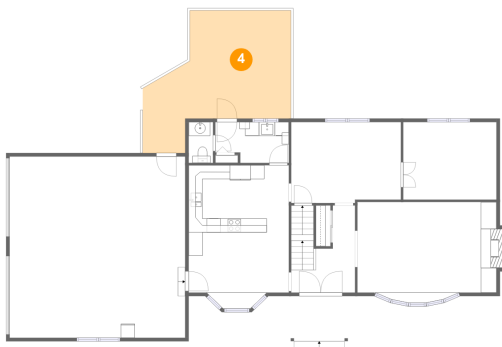
3 Floor 2 - Garage



Max Dimensions: 25'3" x 26'0"
Calculated Area: 658 sq. ft
Included: No

Heated: No
Finished: Yes
Enclosed: Yes
Contiguous: Yes
Permitted: Yes
Wet space: No
Addition: No
Conversion: No

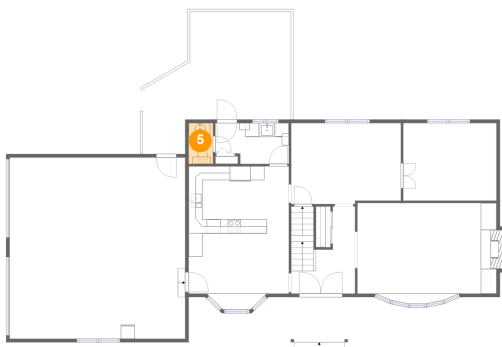
4 Floor 2 - Deck



Max Dimensions: 21'4" x 15'6"
Calculated Area: 299 sq. ft
Included: No

Heated: No
Finished: Yes
Enclosed: No
Contiguous: Yes
Permitted: Yes
Wet space: No
Addition: No
Conversion: No

5 Floor 2 - WC

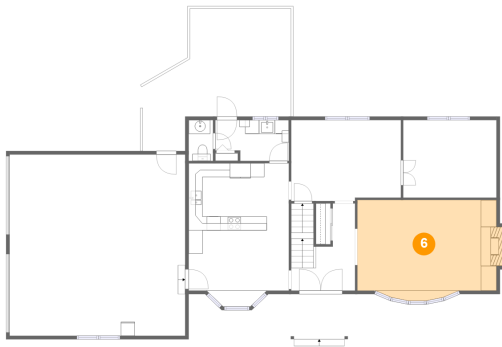


Max Dimensions: 3'6" x 5'10"
Calculated Area: 21 sq. ft
Included: Yes

Heated: Yes
Finished: Yes
Enclosed: Yes
Contiguous: Yes
Permitted: Yes
Wet space: Yes
Addition: No
Conversion: No

182 Humphrey Lane, Falling Waters, Berkeley County, West Virginia, United States, 25419

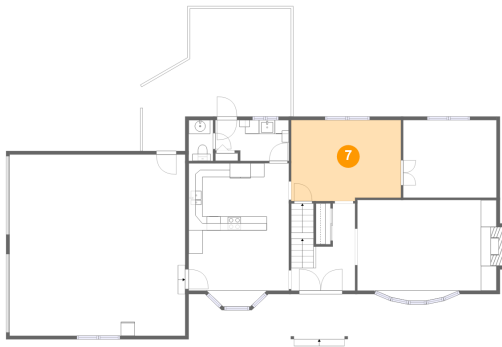
6 Floor 2 - Living Room



Max Dimensions: 20'0" x 13'0"
Calculated Area: 277 sq. ft
Included: Yes

Heated: Yes
Finished: Yes
Enclosed: Yes
Contiguous: Yes
Permitted: Yes
Wet space: No
Addition: No
Conversion: No

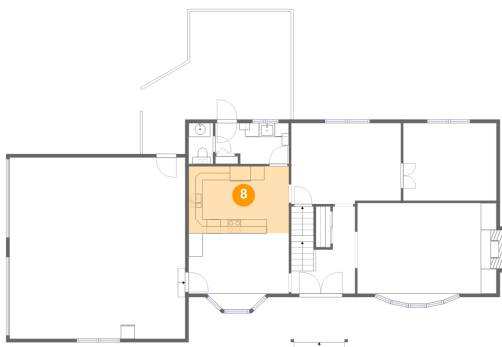
7 Floor 2 - Dining Room



Max Dimensions: 15'9" x 11'8"
Calculated Area: 181 sq. ft
Included: Yes

Heated: Yes
Finished: Yes
Enclosed: Yes
Contiguous: Yes
Permitted: Yes
Wet space: No
Addition: No
Conversion: No

8 Floor 2 - Kitchen

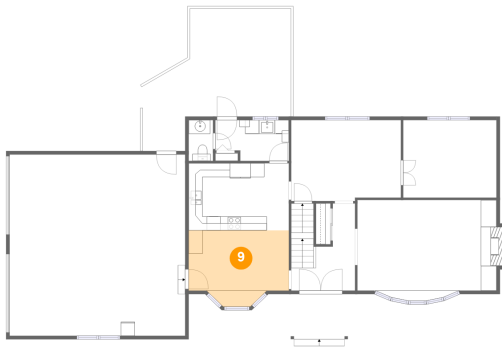


Max Dimensions: 14'5" x 9'8"
Calculated Area: 139 sq. ft
Included: Yes

Heated: Yes
Finished: Yes
Enclosed: Yes
Contiguous: Yes
Permitted: Yes
Wet space: No
Addition: No
Conversion: No

182 Humphrey Lane, Falling Waters, Berkeley County, West Virginia, United States, 25419

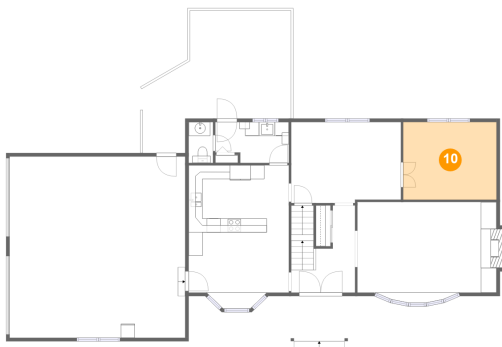
9 Floor 2 - Breakfast Nook



Max Dimensions: 14'5" x 8'8"
Calculated Area: 139 sq. ft
Included: Yes

Heated: Yes
Finished: Yes
Enclosed: Yes
Contiguous: Yes
Permitted: Yes
Wet space: No
Addition: No
Conversion: No

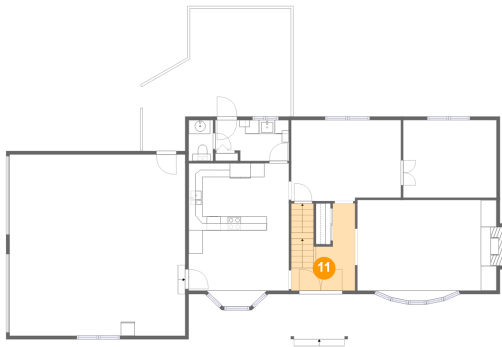
10 Floor 2 - Family Room



Max Dimensions: 13'5" x 11'2"
Calculated Area: 150 sq. ft
Included: Yes

Heated: Yes
Finished: Yes
Enclosed: Yes
Contiguous: Yes
Permitted: Yes
Wet space: No
Addition: No
Conversion: No

11 Floor 2 - Foyer

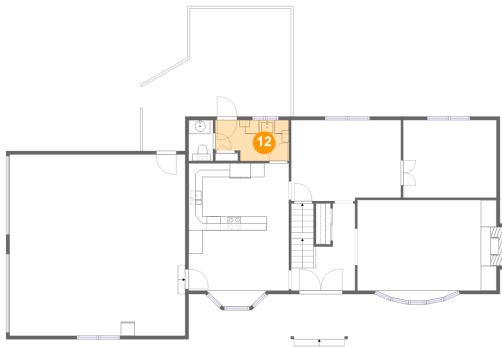


Max Dimensions: 9'2" x 12'6"
Calculated Area: 98 sq. ft
Included: Yes

Heated: Yes
Finished: Yes
Enclosed: Yes
Contiguous: Yes
Permitted: Yes
Wet space: No
Addition: No
Conversion: No

182 Humphrey Lane, Falling Waters, Berkeley County, West Virginia, United States, 25419

12 Floor 2 - Laundry



Max Dimensions: 10'7" x 5'10"
Calculated Area: 57 sq. ft
Included: Yes

Heated: Yes
Finished: Yes
Enclosed: Yes
Contiguous: Yes
Permitted: Yes
Wet space: No
Addition: No
Conversion: No

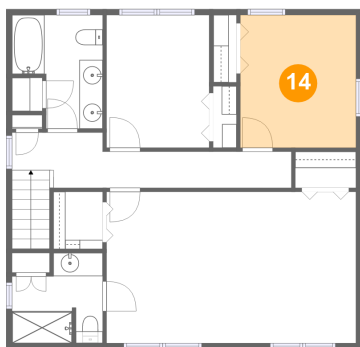
13 Floor 2 - Porch



Max Dimensions: 23'11" x 6'6"
Calculated Area: 140 sq. ft
Included: No

Heated: No
Finished: Yes
Enclosed: No
Contiguous: Yes
Permitted: Yes
Wet space: No
Addition: No
Conversion: No

14 Floor 3 - Bedroom

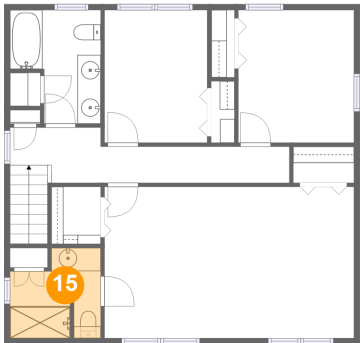


Max Dimensions: 9'11" x 11'5"
Calculated Area: 113 sq. ft
Included: Yes

Heated: Yes
Finished: Yes
Enclosed: Yes
Contiguous: Yes
Permitted: Yes
Wet space: No
Addition: No
Conversion: No

182 Humphrey Lane, Falling Waters, Berkeley County, West Virginia, United States, 25419

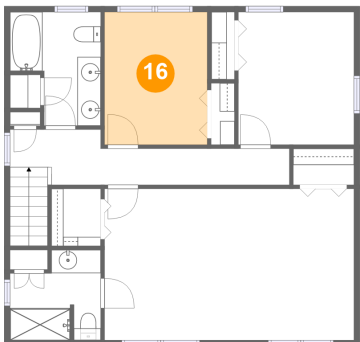
15 Floor 3 - Bath



Max Dimensions: 7'9" x 7'9"
Calculated Area: 52 sq. ft
Included: Yes

Heated: Yes
Finished: Yes
Enclosed: Yes
Contiguous: Yes
Permitted: Yes
Wet space: Yes
Addition: No
Conversion: No

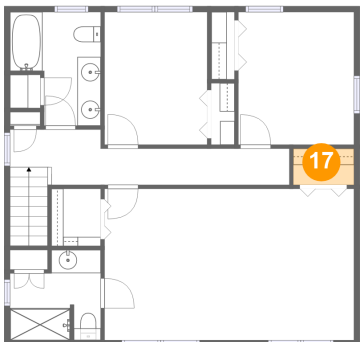
16 Floor 3 - Bedroom



Max Dimensions: 8'10" x 11'5"
Calculated Area: 100 sq. ft
Included: Yes

Heated: Yes
Finished: Yes
Enclosed: Yes
Contiguous: Yes
Permitted: Yes
Wet space: No
Addition: No
Conversion: No

17 Floor 3 - W.I.C.

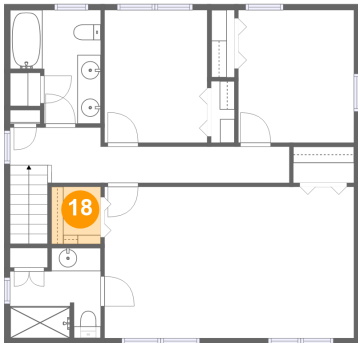


Max Dimensions: 5'3" x 3'1"
Calculated Area: 16 sq. ft
Included: Yes

Heated: Yes
Finished: Yes
Enclosed: Yes
Contiguous: Yes
Permitted: Yes
Wet space: No
Addition: No
Conversion: No

182 Humphrey Lane, Falling Waters, Berkeley County, West Virginia, United States, 25419

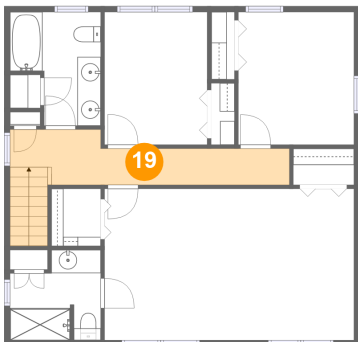
18 Floor 3 - W.I.C.



Max Dimensions: 4'3" x 4'11"
Calculated Area: 21 sq. ft
Included: Yes

Heated: Yes
Finished: Yes
Enclosed: Yes
Contiguous: Yes
Permitted: Yes
Wet space: No
Addition: No
Conversion: No

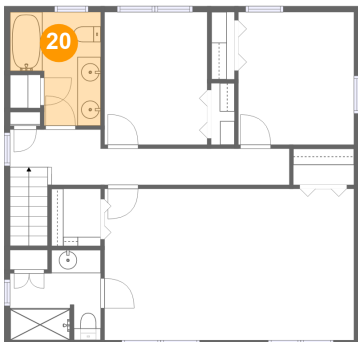
19 Floor 3 - Hall



Max Dimensions: 24'0" x 4'9"
Calculated Area: 104 sq. ft
Included: Yes

Heated: Yes
Finished: Yes
Enclosed: Yes
Contiguous: Yes
Permitted: Yes
Wet space: No
Addition: No
Conversion: No

20 Floor 3 - Bath

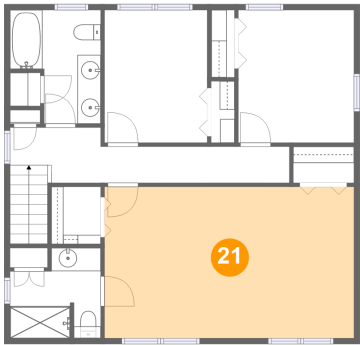


Max Dimensions: 7'9" x 9'9"
Calculated Area: 62 sq. ft
Included: Yes

Heated: Yes
Finished: Yes
Enclosed: Yes
Contiguous: Yes
Permitted: Yes
Wet space: Yes
Addition: No
Conversion: No

182 Humphrey Lane, Falling Waters, Berkeley County, West Virginia, United States, 25419

21 Floor 3 - Primary Bedroom



Max Dimensions: 21'5" x 13'0"
Calculated Area: 278 sq. ft
Included: Yes

Heated: Yes
Finished: Yes
Enclosed: Yes
Contiguous: Yes
Permitted: Yes
Wet space: No
Addition: No
Conversion: No