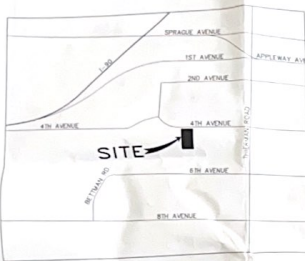


SITE IMPROVEMENT PLANS FOR REEVES SHORT PLAT (SP 35-07)

A PORTION OF THE NW $\frac{1}{4}$ OF SECTION 24, TOWNSHIP 25 NORTH, RANGE 45 EAST, W.M.
SPOKANE VALLEY, WASHINGTON

MARCH 2009



VICINITY MAP
NOT TO SCALE

DRAINAGE CALCULATIONS

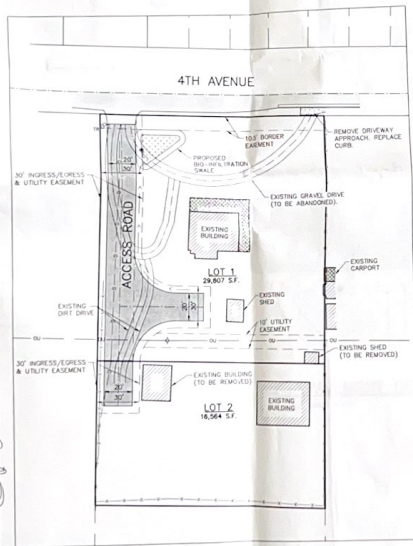
SWALE DATA					
SWALE ID	BOTTOM AREA (SF)	BOTTOM ELEV.	MINIMUM MERM ELEV.	DRYING RIM ELEV.	12" RAIN
SWALE	389	2001.30'	2000.30'	2001.2'	

DRAINAGE AREAS (SF)					
TYPE	GRAVEL DRIVEWAYS	ROOF	STREET	NATUR.	12" RAIN
BASIN	7206	-	5,466	-	4,466
	NON 7206	-	-	-	12,110

LEGEND

- EXISTING**
- ASPHALT
 - CONCRETE
 - CURB
 - DRYWELL
 - CAS MARK
 - TELEPHONE RISER
 - UTILITY MANHOLE
 - UTILITY POLE
 - OVERHEAD UTILITY
 - FENCE
 - TBM

- PROPOSED**
- NEW ASPHALT
 - CONCRETE
 - SANIT
 - DRYWELL
 - SWALE



OVERALL SITE PLAN

SCALE: 1"=30'

GRAPHIC SCALE



DRAWING INDEX

- COVER SHEET
- GENERAL NOTES
- ROAD PLAN & PROFILE

ABBREVIATIONS

- ACB ASPHALT CONCRETE PAVEMENT
- C.S.T.C. CURBED SURFACE TOP COURSE
- ELEV. OR EL. ELEVATION
- EDG. OR FINISHMENT EDGE-OF-FINISHMENT
- EX. EXISTING
- EG. EXISTING GRADE
- F.F. FINISHED FLOOR (ELEVATION)
- FG. FINISHED GRADE
- FL. FLOW LINE (ELEVATION)
- FT. FEET
- LT. LEFT
- MAX. MAXIMUM
- MIN. MINIMUM
- N.T.S. NOT TO SCALE
- R.O.W. RIGHT-OF-WAY
- RD. ROAD
- REL. RIGHT-OF-WAY TOP-OF-CONCRETE
- TOP. TOP-OF-PAVING
- TYP. TYPICAL
- V.I.F. VERIFY IN FIELD

DEVELOPER'S APPROVAL

THE UNDERSIGNED DEVELOPER OR HIS AGENT AGREES TO CONSTRUCT IMPROVEMENTS IN ACCORDANCE WITH THIS PLAN, AND UPON COMPLETION, THE DEVELOPER IS RESPONSIBLE FOR SUBMITTING RESPONSIBLE RECORD DRAWINGS TO BE COMPLETED BY A PROFESSIONAL ENGINEER AND/OR PROFESSIONAL LAND SURVEYOR FOR REVIEW AND APPROVAL BY SPOKANE COUNTY UTILITIES DEPARTMENT AT THE COMPLETION OF CONSTRUCTION.

DEVELOPER'S APPROVAL: M. H. B. J. DATE: 3/11/09

THIS CONSTRUCTION PLAN EXPIRES ONE (1) YEAR FROM DATE OF APPROVAL.

RECORD DRAWING APPROVAL (ENGINEER/SURVEYOR): _____ DATE: _____

BENCH MARK

17' TYP. HIGH IRON IN FACE OF POWER POLE AT NW CORNER

WITH AN ELEVATION = 2,002.24' (NAD83)

NOTE

ALL WORK SHALL BE PERFORMED IN ACCORDANCE WITH 2008 STANDARD SPECIFICATIONS FOR ROAD, BRIDGE, AND MUNICIPAL CONSTRUCTION AS PROMULGATED UNDER THE AUTHORITY OF THE WASHINGTON STATE DEPARTMENT OF TRANSPORTATION (SDOT), THE AMERICAN ROAD & BUILDING BUILDERS ASSOCIATION (ARBA) AND THE SPOKANE COUNTY SUPPLEMENTAL SPECIFICATIONS.

CITY OF SPOKANE VALLEY CONTACT

100 PEGHAM DEVELOPMENT CONSTRUCTION INSPECTOR
1037 E. SPOKANE AVE. SUITE 108
SPOKANE VALLEY, WA 99208
(509) 821-1008
pegham@spokanevalley.gov



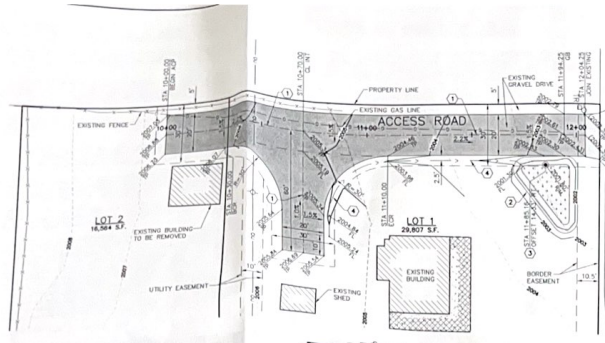
RECEIVED
CITY Development Engineering

MAR 12 2009
Project # 2008-25-03
Spokane County, Spokane, WA
Submitted # 3/7/09

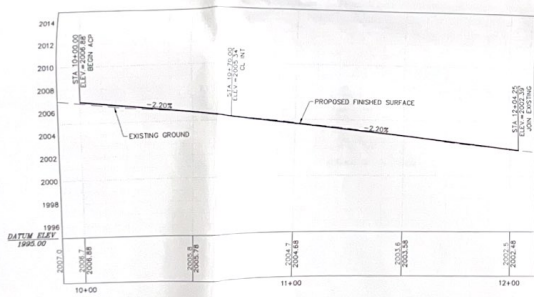
SHEET 1 OF 3



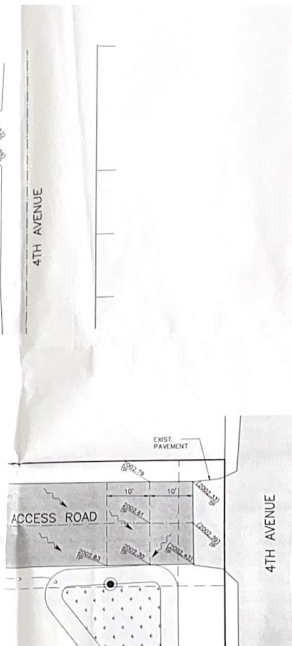
BEFORE YOU DIG: 1-800-424-5555



1 ACCESS ROAD PLAN VIEW
SCALE: 1"=20'

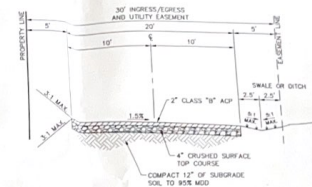


2 ACCESS ROAD PROFILE VIEW
SCALE: 1"=20' HORIZONTAL, 1"=4' VERTICAL



3 PAVEMENT DETAIL
SCALE: 1"=10'

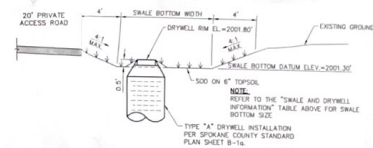
ITEM	DESCRIPTION
1	CONSTRUCT 20' WIDE ACCESS ROAD PER DETAIL 3, THIS SHEET
2	CONSTRUCT 20' WIDE ASPHALT DRIVE PER DETAIL 4, THIS SHEET
3	CONSTRUCT 20' WIDE ASPHALT DRIVE PER DETAIL 4, THIS SHEET
4	CONSTRUCT 10' WIDE ASPHALT DRIVE PER DETAIL 4, THIS SHEET
5	CONSTRUCT 10' WIDE ASPHALT DRIVE PER DETAIL 4, THIS SHEET



3 ACCESS ROAD TYPICAL SECTION
SCALE: 1"=5'

SWALE ID	SWALE AREA (SQ FT)	SWALE BOTTOM ELEVATION	DRYWELL RIM ELEVATION	DRYWELL RIM MINIMUM BENEATH ELEVATION
SWALE 1	114.46/14.33	2001.80'	2001.30'	2002.30'

NOTE: DRYWELL IS SPECIFIED TO BE SINGLE DEPTH (TYPE "A")



4 SWALE & DRYWELL TYPICAL SECTION
SCALE: N.T.S.



5 DITCH TYPICAL SECTION
SCALE: N.T.S.



ADAMS & CLARK, Inc.
1700 W. Fourth Ave.
Spokane, WA 99201
(509) 747-4000 (509) 747-8810

NO.	DATE	BY	FROM	AS BUILT

BENCH MARK	DATUM	SCALE	DATE	STAFF
BM	HORIZONTAL	1"=20'		
ELEVATION	2002.24 (M.A.S.S.)	VERTICAL		

ROAD PLAN & PROFILE		TYPE OF IMPROVEMENT: ROAD	
PROJECT NUMBER	PLAN NUMBER	PROJECT NUMBER	PLAN NUMBER

REYES SHORT PLAT (SP 35-07)
SPOKANE VALLEY, WA

SHEET 3 OF 3
CALL BEFORE YOU DIG: 1-800-424-6000