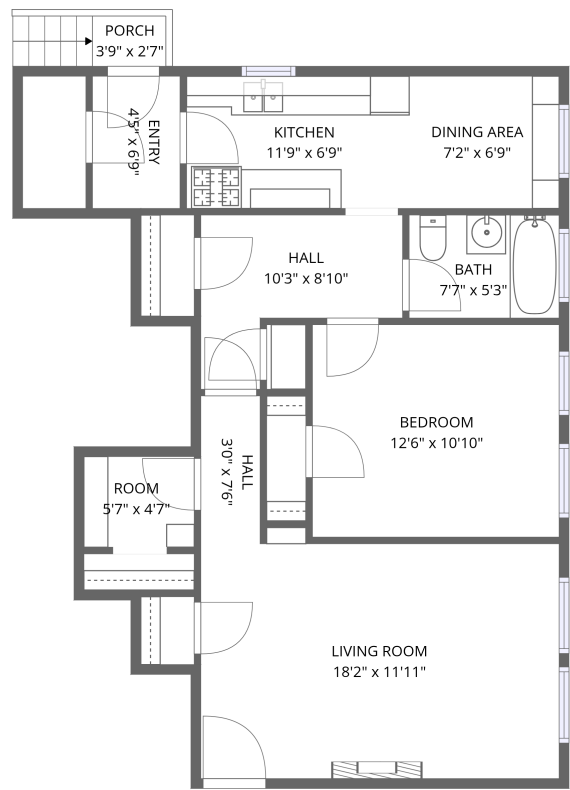


Home data report

5052 Dockweiler St, Los Angeles, CA, US



1st floor

Total Area: 779 sq. ft

1st Floor: 779 sq. ft

Excluded: Porch 20 sq. ft, Walls: 0 sq. ft

Property summary

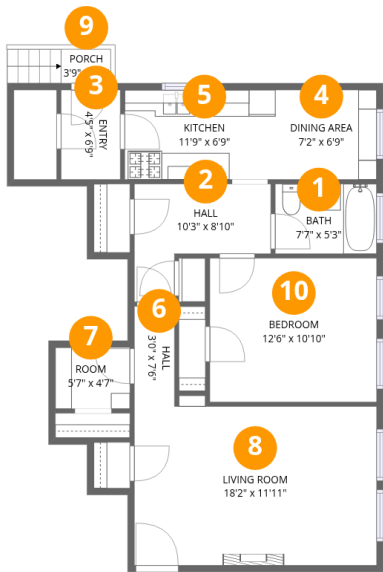
 **1** Floors

 **1** Bedrooms

 **1** Bathrooms

Home data report

5052 Dockweiler St, Los Angeles, CA, US

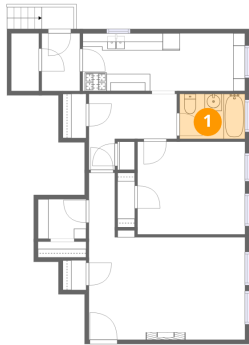


Room dimensions

Floor 1 Total:779sqft Excluded: 20sqft

#		Dimensions	sqft	Counted as living area
1	Bath	7'7" x 5'3"	40 sq. ft	Yes
2	Hall	10'3" x 8'10"	91 sq. ft	Yes
3	Entry	4'5" x 6'9"	30 sq. ft	Yes
4	Dining Area	7'2" x 6'9"	48 sq. ft	Yes
5	Kitchen	11'9" x 6'9"	79 sq. ft	Yes
6	Hall	3'0" x 7'6"	23 sq. ft	Yes
7	Room	5'7" x 4'7"	26 sq. ft	Yes
8	Living Room	18'2" x 11'11"	217 sq. ft	Yes
9	Porch	3'9" x 2'7"	10 sq. ft	No
10	Bedroom	12'6" x 10'10"	135 sq. ft	Yes

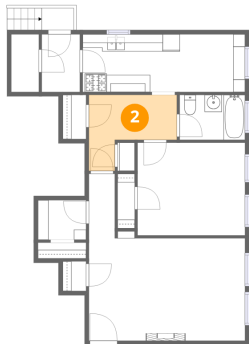
1 Floor 1 - Bath



Dimensions: 7'7" x 5'3"
Area: 40 sq. ft
Counted as living area: Yes

Heated: Yes
Finished: Yes
Enclosed: Yes
Contiguous: Yes
Permitted: Yes
Wet space: Yes
Addition: No
Conversion: No

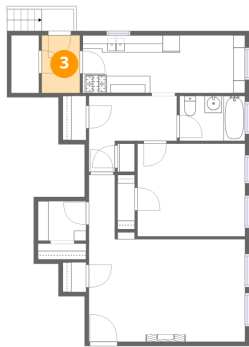
2 Floor 1 - Hall



Dimensions: 10'3" x 8'10"
Area: 91 sq. ft
Counted as living area: Yes

Heated: Yes
Finished: Yes
Enclosed: Yes
Contiguous: Yes
Permitted: Yes
Wet space: No
Addition: No
Conversion: No

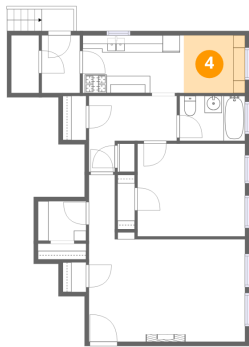
3 Floor 1 - Entry



Dimensions: 4'5" x 6'9"
Area: 30 sq. ft
Counted as living area: Yes

Heated: Yes
Finished: Yes
Enclosed: Yes
Contiguous: Yes
Permitted: Yes
Wet space: No
Addition: No
Conversion: No

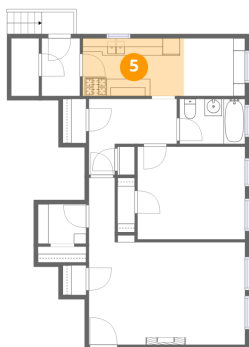
4 Floor 1 - Dining Area



Dimensions: 7'2" x 6'9"
Area: 48 sq. ft
Counted as living area: Yes

Heated: Yes
Finished: Yes
Enclosed: Yes
Contiguous: Yes
Permitted: Yes
Wet space: No
Addition: No
Conversion: No

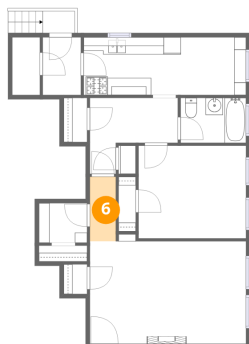
5 Floor 1 - Kitchen



Dimensions: 11'9" x 6'9"
Area: 79 sq. ft
Counted as living area: Yes

Heated: Yes
Finished: Yes
Enclosed: Yes
Contiguous: Yes
Permitted: Yes
Wet space: No
Addition: No
Conversion: No

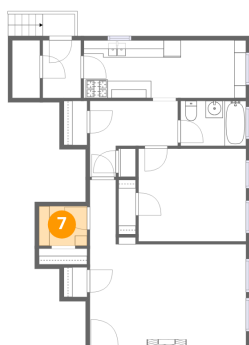
6 Floor 1 - Hall



Dimensions: 3'0" x 7'6"
Area: 23 sq. ft
Counted as living area: Yes

Heated: Yes
Finished: Yes
Enclosed: Yes
Contiguous: Yes
Permitted: Yes
Wet space: No
Addition: No
Conversion: No

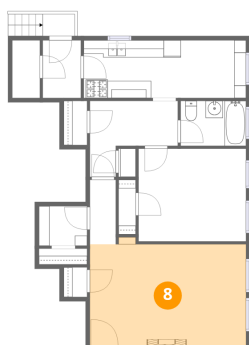
7 Floor 1 - Room



Dimensions: 5'7" x 4'7"
Area: 26 sq. ft
Counted as living area: Yes

Heated: Yes
Finished: Yes
Enclosed: Yes
Contiguous: Yes
Permitted: Yes
Wet space: No
Addition: No
Conversion: No

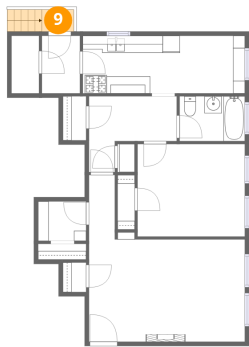
8 Floor 1 - Living Room



Dimensions: 18'2" x 11'11"
Area: 217 sq. ft
Counted as living area: Yes

Heated: Yes
Finished: Yes
Enclosed: Yes
Contiguous: Yes
Permitted: Yes
Wet space: No
Addition: No
Conversion: No

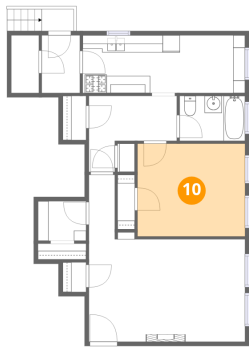
9 Floor 1 - Porch



Dimensions: 3'9" x 2'7"
Area: 10 sq. ft
Counted as living area: No

Heated: No
Finished: No
Enclosed: No
Contiguous: Yes
Permitted: Yes
Wet space: No
Addition: No
Conversion: No

10 Floor 1 - Bedroom



Dimensions: 12'6" x 10'10"
Area: 135 sq. ft
Counted as living area: Yes

Heated: Yes
Finished: Yes
Enclosed: Yes
Contiguous: Yes
Permitted: Yes
Wet space: No
Addition: No
Conversion: No