

Home report

520 Tweedsmuir Avenue, Westboro, Laurentian View, Ottawa,
Ontario, Canada, K1Z 5N9




Total Area: 2439 sq. ft


Below Ground: 529 sq. ft, Floor 2: 814 sq. ft, Floor 3: 1096 sq. ft

Excluded: Storage 199 sq. ft, Garage 232 sq. ft

Property summary

 3 Floors

 3 Bedrooms

 2 Bathrooms

Home report

**520 Tweedsmuir Avenue, Westboro, Laurentian View, Ottawa,
Ontario, Canada, K1Z 5N9**



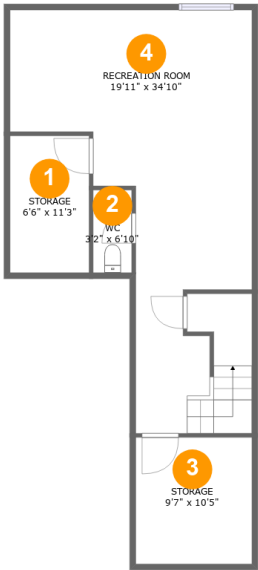
2
Half baths



1
Garages

Home report

520 Tweedsmuir Avenue, Westboro, Laurentian View, Ottawa,
Ontario, Canada, K1Z 5N9



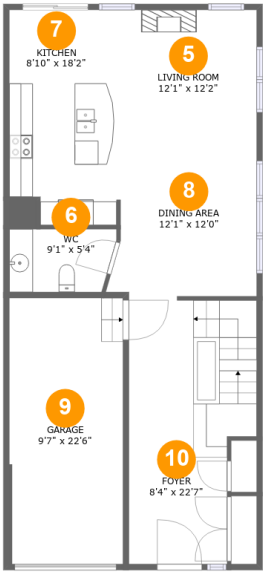
Room dimensions

Floor 1 Below ground Total:529sqft Excluded: 199sqft

#		Max Dimensions	sqft	Included
1	Storage	6'6" x 11'3"	73 sq. ft	No
2	WC	3'2" x 6'10"	22 sq. ft	Yes
3	Storage	9'7" x 10'5"	100 sq. ft	No
4	Recreation Room	19'11" x 34'10"	449 sq. ft	Yes

Home report

520 Tweedsmuir Avenue, Westboro, Laurentian View, Ottawa,
Ontario, Canada, K1Z 5N9



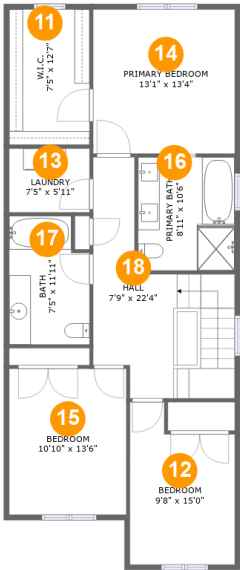
Room dimensions

Floor 2 Total:814sqft Excluded: 232sqft

#		Max Dimensions	sqft	Included
5	Living Room	12'1" x 12'2"	147 sq. ft	Yes
6	WC	9'1" x 5'4"	45 sq. ft	Yes
7	Kitchen	8'10" x 18'2"	154 sq. ft	Yes
8	Dining Area	12'1" x 12'0"	144 sq. ft	Yes
9	Garage	9'7" x 22'6"	216 sq. ft	No
10	Foyer	8'4" x 22'7"	215 sq. ft	Yes

Home report

520 Tweedsmuir Avenue, Westboro, Laurentian View, Ottawa,
Ontario, Canada, K1Z 5N9



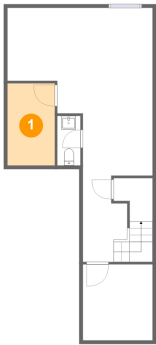
Room dimensions

Floor 3 Total:1096sqft Excluded: 0sqft

#		Max Dimensions	sqft	Included
11	W.I.C.	7'5" x 12'7"	93 sq. ft	Yes
12	Bedroom	9'8" x 15'0"	127 sq. ft	Yes
13	Laundry	7'5" x 5'11"	44 sq. ft	Yes
14	Primary Bedroom	13'1" x 13'4"	175 sq. ft	Yes
15	Bedroom	10'10" x 13'6"	147 sq. ft	Yes
16	Primary Bath	8'11" x 10'6"	94 sq. ft	Yes
17	Bath	7'5" x 11'11"	83 sq. ft	Yes
18	Hall	7'9" x 22'4"	182 sq. ft	Yes

520 Tweedsmuir Avenue, Westboro, Laurentian View, Ottawa,
Ontario, Canada, K1Z 5N9

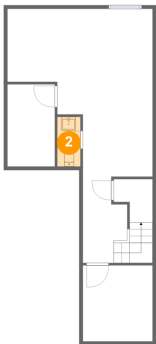
1 Floor 1 - Storage



Max Dimensions: 6'6" x
11'3"
Calculated Area: 73 sq. ft
Included: No

Heated: No
Finished: No
Enclosed: No
Contiguous:
Yes
Permitted: Yes
Wet space: No
Addition: No
Conversion: No

2 Floor 1 - WC

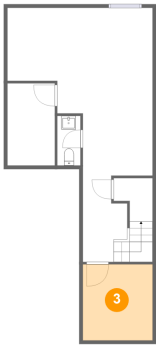


Max Dimensions: 3'2" x
6'10"
Calculated Area: 22 sq. ft
Included: Yes

Heated: Yes
Finished: Yes
Enclosed: Yes
Contiguous:
Yes
Permitted: Yes
Wet space: No
Addition: No
Conversion: No

520 Tweedsmuir Avenue, Westboro, Laurentian View, Ottawa,
Ontario, Canada, K1Z 5N9

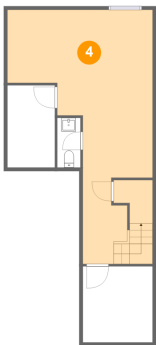
3 Floor 1 - Storage



Max Dimensions: 9'7" x 10'5"
Calculated Area: 100 sq. ft
Included: No

Heated: No
Finished: No
Enclosed: No
Contiguous: Yes
Permitted: Yes
Wet space: No
Addition: No
Conversion: No

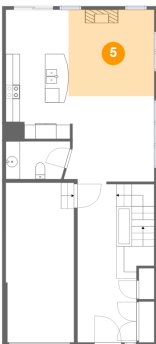
4 Floor 1 - Recreation Room



Max Dimensions: 19'11" x 34'10"
Calculated Area: 449 sq. ft
Included: Yes

Heated: Yes
Finished: Yes
Enclosed: Yes
Contiguous: Yes
Permitted: Yes
Wet space: No
Addition: No
Conversion: No

5 Floor 2 - Living Room



Max Dimensions: 12'1" x 12'2"
Calculated Area: 147 sq. ft
Included: Yes

Heated: Yes
Finished: Yes
Enclosed: Yes
Contiguous: Yes
Permitted: Yes
Wet space: No
Addition: No
Conversion: No

520 Tweedsmuir Avenue, Westboro, Laurentian View, Ottawa,
Ontario, Canada, K1Z 5N9

6 Floor 2 - WC



Max Dimensions: 9'1" x 5'4"
Calculated Area: 45 sq. ft
Included: Yes

Heated: Yes
Finished: Yes
Enclosed: Yes
Contiguous: Yes
Permitted: Yes
Wet space: Yes
Addition: No
Conversion: No

7 Floor 2 - Kitchen



Max Dimensions: 8'10" x 18'2"
Calculated Area: 154 sq. ft
Included: Yes

Heated: Yes
Finished: Yes
Enclosed: Yes
Contiguous: Yes
Permitted: Yes
Wet space: No
Addition: No
Conversion: No

8 Floor 2 - Dining Area



Max Dimensions: 12'1" x 12'0"
Calculated Area: 144 sq. ft
Included: Yes

Heated: Yes
Finished: Yes
Enclosed: Yes
Contiguous: Yes
Permitted: Yes
Wet space: No
Addition: No
Conversion: No

520 Tweedsmuir Avenue, Westboro, Laurentian View, Ottawa,
Ontario, Canada, K1Z 5N9

9 Floor 2 - Garage



Max Dimensions: 9'7" x 22'6"
Calculated Area: 216 sq. ft
Included: No

Heated: No
Finished: No
Enclosed: Yes
Contiguous: Yes
Permitted: Yes
Wet space: No
Addition: No
Conversion: No

10 Floor 2 - Foyer



Max Dimensions: 8'4" x 22'7"
Calculated Area: 215 sq. ft
Included: Yes

Heated: Yes
Finished: Yes
Enclosed: Yes
Contiguous: Yes
Permitted: Yes
Wet space: No
Addition: No
Conversion: No

11 Floor 3 - W.I.C.



Max Dimensions: 7'5" x 12'7"
Calculated Area: 93 sq. ft
Included: Yes

Heated: Yes
Finished: Yes
Enclosed: Yes
Contiguous: Yes
Permitted: Yes
Wet space: No
Addition: No
Conversion: No

520 Tweedsmuir Avenue, Westboro, Laurentian View, Ottawa,
Ontario, Canada, K1Z 5N9

12 Floor 3 - Bedroom



Max Dimensions: 9'8" x 15'0"
Calculated Area: 127 sq. ft
Included: Yes

Heated: Yes
Finished: Yes
Enclosed: Yes
Contiguous: Yes
Permitted: Yes
Wet space: No
Addition: No
Conversion: No

13 Floor 3 - Laundry



Max Dimensions: 7'5" x 5'11"
Calculated Area: 44 sq. ft
Included: Yes

Heated: Yes
Finished: Yes
Enclosed: Yes
Contiguous: Yes
Permitted: Yes
Wet space: No
Addition: No
Conversion: No

14 Floor 3 - Primary Bedroom



Max Dimensions: 13'1" x 13'4"
Calculated Area: 175 sq. ft
Included: Yes

Heated: Yes
Finished: Yes
Enclosed: Yes
Contiguous: Yes
Permitted: Yes
Wet space: No
Addition: No
Conversion: No

520 Tweedsmuir Avenue, Westboro, Laurentian View, Ottawa,
Ontario, Canada, K1Z 5N9

15 Floor 3 - Bedroom



Max Dimensions: 10'10" x 13'6"
Calculated Area: 147 sq. ft
Included: Yes

Heated: Yes
Finished: Yes
Enclosed: Yes
Contiguous: Yes
Permitted: Yes
Wet space: No
Addition: No
Conversion: No

16 Floor 3 - Primary Bath



Max Dimensions: 8'11" x 10'6"
Calculated Area: 94 sq. ft
Included: Yes

Heated: Yes
Finished: Yes
Enclosed: Yes
Contiguous: Yes
Permitted: Yes
Wet space: Yes
Addition: No
Conversion: No

17 Floor 3 - Bath

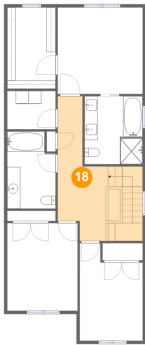


Max Dimensions: 7'5" x 11'11"
Calculated Area: 83 sq. ft
Included: Yes

Heated: Yes
Finished: Yes
Enclosed: Yes
Contiguous: Yes
Permitted: Yes
Wet space: Yes
Addition: No
Conversion: No

520 Tweedsmuir Avenue, Westboro, Laurentian View, Ottawa,
Ontario, Canada, K1Z 5N9

18 Floor 3 - Hall



Max Dimensions: 7'9" x 22'4"
Calculated Area: 182 sq. ft
Included: Yes

Heated: Yes
Finished: Yes
Enclosed: Yes
Contiguous: Yes
Permitted: Yes
Wet space: No
Addition: No
Conversion: No