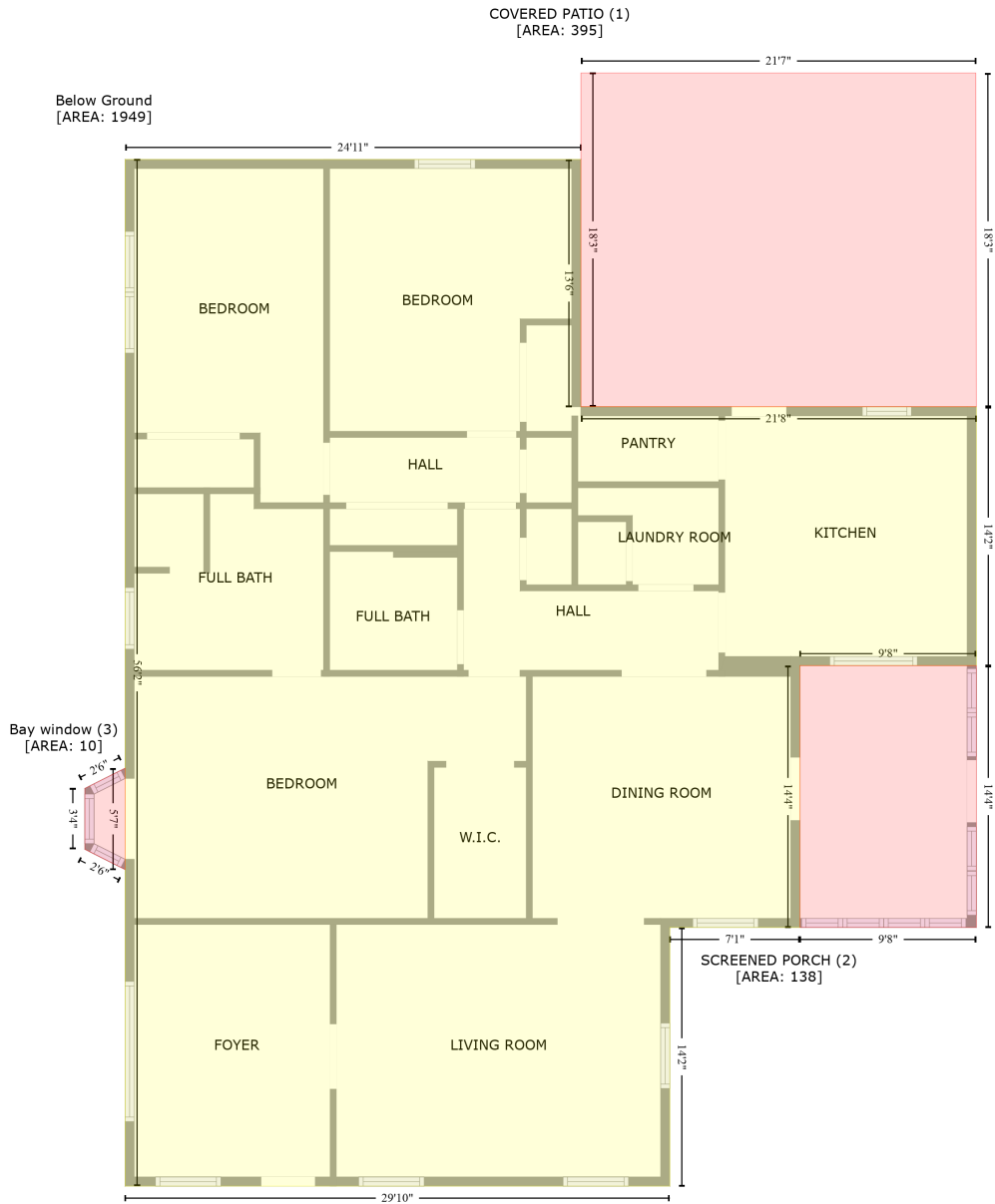


306 East 5th Street, Ferris, Ellis County, Texas, United States, 75125

Gross Living Area: 537 sq. ft



Space	Area (sq. ft)	Calculation <small>Coordinate Polygon Area Algorithm using inches</small>
Below Ground (Living area)	1949	$-((317.3 + 317.3) * (899.9 - 1062.4) + (317.3 + 576.9) * (1062.4 - 1062.4) + (576.9 + 576.9) * (1062.4 - 1232.4) + (576.9 + 461.1) * (1232.4 - 1232.4) + (461.1 + 461.1) * (1232.4 - 1404.4) + (461.1 + 375.7) * (1404.4 - 1404.4) + (375.7 + 375.7) * (1404.4 - 1574.3) + (375.7 + 18) * (1574.3 - 1574.3) + (18 + 18) * (1574.3 - 899.9) + (18 + 317.3) * (899.9 - 899.9)) * 0.5 * 0.00694$
COVERED PATIO (Non-living area)	395	$-((576.6 + 576.9) * (843.2 - 1062.4) + (576.9 + 317.3) * (1062.4 - 1062.4) + (317.3 + 317.3) * (1062.4 - 843.2) + (317.3 + 576.6) * (843.2 - 843.2)) * 0.5 * 0.00694$

306 East 5th Street, Ferris, Ellis County, Texas, United States, 75125

Gross Living Area: 537 sq. ft

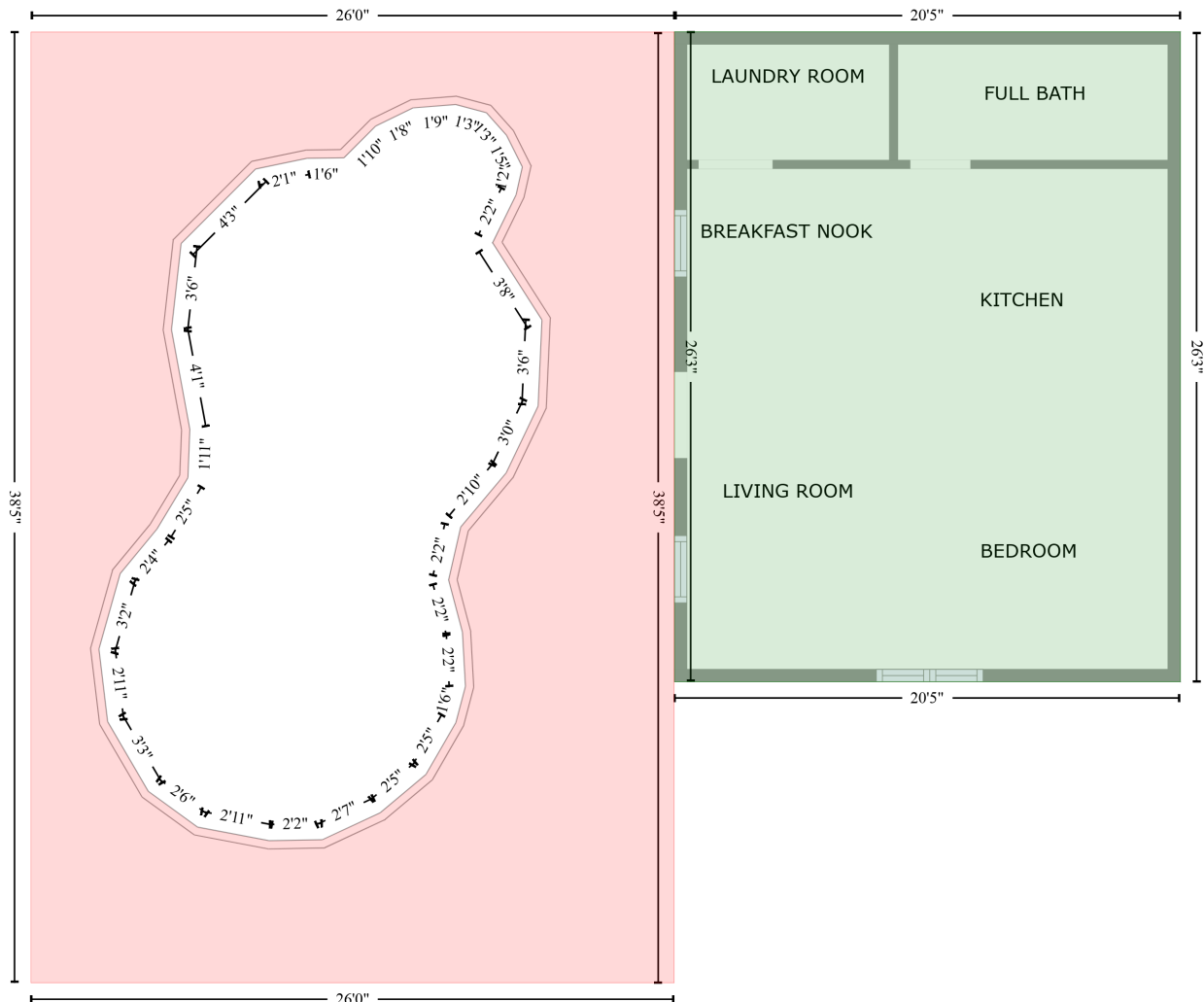
Space	Area (sq. ft)	Calculation <small>Coordinate Polygon Area Algorithm using inches</small>
SCREENED PORCH (Non-living area)	138	$-((576.9 + 576.9) * (1232.4 - 1404.4) + (576.9 + 461.1) * (1404.4 - 1404.4) + (461.1 + 461.1) * (1404.4 - 1232.4) + (461.1 + 576.9) * (1232.4 - 1232.4)) * 0.5 * 0.00694$
Bay window (Non-living area)	10	$-((18 + 18) * (1299.8 - 1366.4) + (18 + -8.4) * (1366.4 - 1353.1) + (-8.4 + -8.4) * (1353.1 - 1313.1) + (-8.4 + 18) * (1313.1 - 1299.8)) * 0.5 * 0.00694$

306 East 5th Street, Ferris, Ellis County, Texas, United States, 75125

Gross Living Area: 537 sq. ft

PATIO (1)
[AREA: 634]

FLOOR 2
[AREA: 537]



Space	Area (sq. ft)	Calculation <small>Coordinate Polygon Area Algorithm using inches</small>
FLOOR 2 (Living area)	537	$-\left((408.2 + 653.6) * (1.2 - 1.2) + (653.6 + 653.6) * (1.2 - 316.4) + (653.6 + 408.2) * (316.4 - 316.4) + (408.2 + 408.2) * (316.4 - 1.2)\right) * 0.5 + 0.00694$
PATIO (Non-living area)	634	$-\left((408.2 + 408.2) * (1.2 - 462.4) + (408.2 + 95.8) * (462.4 - 462.4) + (95.8 + 95.8) * (462.4 - 1.2) + (95.8 + 408.2) * (1.2 - 1.2)\right) * 0.5 + 0.00694 - \left((302 + 281.3) * (36.4 - 38.1) + (281.3 + 263.2) * (38.1 - 46.9) + (263.2 + 247.8) * (46.9 - 62.3) + (247.8 + 229.9) * (62.3 - 62.5) + (229.9 + 205) * (62.5 - 67.7) + (205 + 168.8) * (67.7 - 103.8) + (168.8 + 164.1) * (103.8 - 145.6) + (164.1 + 173) * (145.6 - 193.9) + (173 + 172.1) * (193.9 - 217.4) + (172.1 + 157.1) * (217.4 - 242.3) + (157.1 + 139.2) * (242.3 - 263.9) + (139.2 + 128.9) * (263.9 - 300.5) + (128.9 + 133.1) * (300.5 - 335.7) + (133.1 + 152.9) * (335.7 - 369.5) + (152.9 + 176.8) * (369.5 - 386.8) + (176.8 + 211.5) * (386.8 - 393.4) + (211.5 + 237.3) * (393.4 - 392.9) + (237.3 + 265.5) * (392.9 - 379.8) + (265.5 + 287.6) * (379.8 - 302)\right) * 0.5 + 0.00694$

306 East 5th Street, Ferris, Ellis County, Texas, United States, 75125

Gross Living Area: 537 sq. ft

Space	Area (sq. ft)	Calculation <small>Coordinate Polygon Area Algorithm using inches</small>
		$(379.8 - 361.3) + (287.6 + 302.1) * (361.3 - 336.2) + (302.1 + 306.8) * (336.2 - 318.6) + (306.8 + 305.3) * (318.6 - 292.3) + (305.3 + 298.6) * (292.3 - 267) + (298.6 + 304.5) * (267 - 241.3) + (304.5 + 326.5) * (241.3 - 215.1) + (326.5 + 342) * (215.1 - 182.7) + (342 + 343.9) * (182.7 - 140.9) + (343.9 + 319.9) * (140.9 - 103.5) + (319.9 + 331.4) * (103.5 - 80.2) + (331.4 + 334.4) * (80.2 - 66.7) + (334.4 + 326.7) * (66.7 - 51.3) + (326.7 + 316.9) * (51.3 - 40.4) + (316.9 + 302) * (40.4 - 36.4) * 0.5 * 0.00694$