

Home report

1519 Kingscross Road, Midlothian, Chesterfield County, Virginia,  
United States, 23114



**Total Area: 2292 sq. ft**  
Floor 1: 1096 sq. ft, Floor 2: 1196 sq. ft  
Excluded: Garage 312 sq. ft, Screened porch 138 sq. ft, Porch 209 sq. ft, Deck 229 sq. ft, Fireplace 9 sq. ft, Low ceiling 22 sq. ft, Walls: 202 sq. ft

Property summary

 **2** Floors

 **4** Bedrooms

 **2** Bathrooms

Home report

**1519 Kingscross Road, Midlothian, Chesterfield County, Virginia,  
United States, 23114**



**1**  
Half baths



**1**  
Garages

Home report

1519 Kingscross Road, Midlothian, Chesterfield County, Virginia,  
United States, 23114



Room dimensions

Floor 1 Total:1096sqft Excluded: 897sqft

#		Max Dimensions	sqft	Included
1	Dining Room	14'7" x 11'5"	166 sq. ft	Yes
2	Living Room	21'0" x 13'4"	288 sq. ft	Yes
3	Garage	14'9" x 24'3"	312 sq. ft	No
4	WC	3'2" x 6'6"	20 sq. ft	Yes
5	Laundry	7'1" x 6'1"	43 sq. ft	Yes
6	Screened Porch	11'11" x 11'6"	138 sq. ft	No
7	Foyer	8'8" x 11'5"	97 sq. ft	Yes
8	Porch	37'8" x 5'10"	209 sq. ft	No
9	Hall	3'7" x 6'6"	23 sq. ft	Yes
10	Deck	19'11" x 12'0"	229 sq. ft	No
11	Office	11'0" x 11'5"	126 sq. ft	Yes

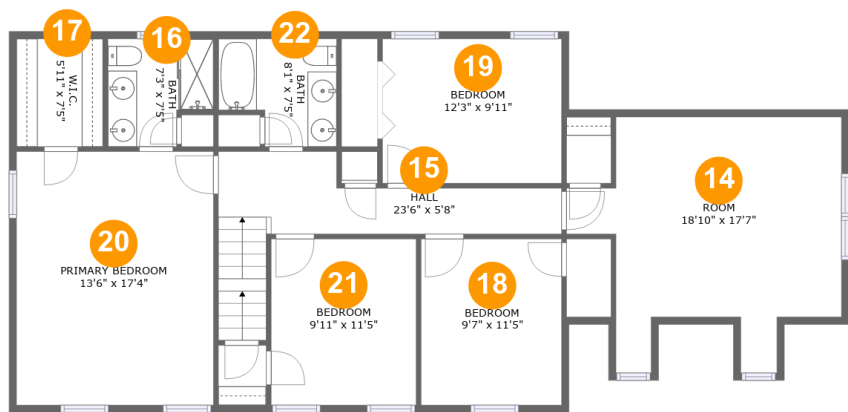
Home report

1519 Kingscross Road, Midlothian, Chesterfield County, Virginia,  
United States, 23114

#		Max Dimensions	sqft	Included
12	Breakfast Nook	9'0" x 15'2"	127 sq. ft	Yes
13	Kitchen	10'10" x 13'4"	136 sq. ft	Yes

Home report

1519 Kingscross Road, Midlothian, Chesterfield County, Virginia,  
United States, 23114

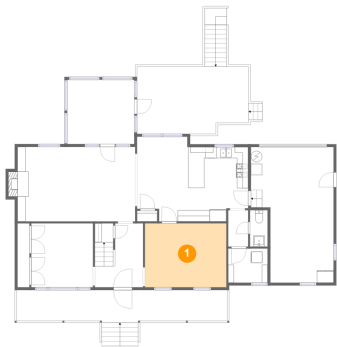


Room dimensions

Floor 2 Total:1196sqft    Excluded: 22sqft

#		Max Dimensions	sqft	Included
14	Room	18'10" x 17'7"	221 sq. ft	Yes
15	Hall	23'6" x 5'8"	118 sq. ft	Yes
16	Bath	7'3" x 7'5"	47 sq. ft	Yes
17	W.I.C.	5'11" x 7'5"	44 sq. ft	Yes
18	Bedroom	9'7" x 11'5"	110 sq. ft	Yes
19	Bedroom	12'3" x 9'11"	122 sq. ft	Yes
20	Primary Bedroom	13'6" x 17'4"	235 sq. ft	Yes
21	Bedroom	9'11" x 11'5"	113 sq. ft	Yes
22	Bath	8'1" x 7'5"	52 sq. ft	Yes

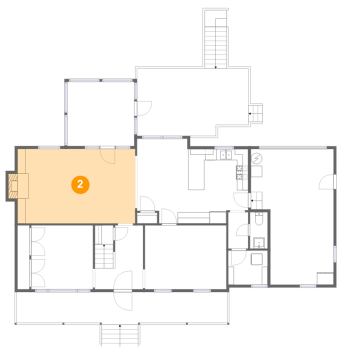
1 Floor 1 - Dining Room



Max Dimensions: 14'7" x 11'5"  
Calculated Area: 166 sq. ft  
Included: Yes

Heated: Yes  
Finished: Yes  
Enclosed: Yes  
Contiguous: Yes  
Permitted: Yes  
Wet space: No  
Addition: No  
Conversion: No

2 Floor 1 - Living Room



Max Dimensions: 21'0" x 13'4"  
Calculated Area: 288 sq. ft  
Included: Yes

Heated: Yes  
Finished: Yes  
Enclosed: Yes  
Contiguous: Yes  
Permitted: Yes  
Wet space: No  
Addition: No  
Conversion: No

## Home report

1519 Kingscross Road, Midlothian, Chesterfield County, Virginia,  
United States, 23114

### 3 Floor 1 - Garage



Max Dimensions: 14'9" x 24'3"  
Calculated Area: 312 sq. ft  
Included: No

Heated: No  
Finished: No  
Enclosed: Yes  
Contiguous: Yes  
Permitted: Yes  
Wet space: No  
Addition: No  
Conversion: No

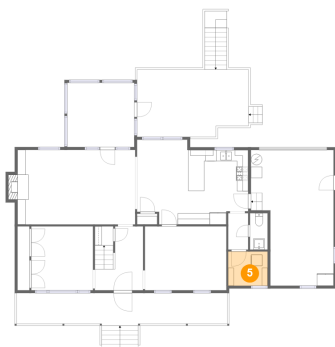
### 4 Floor 1 - WC



Max Dimensions: 3'2" x 6'6"  
Calculated Area: 20 sq. ft  
Included: Yes

Heated: Yes  
Finished: Yes  
Enclosed: Yes  
Contiguous: Yes  
Permitted: Yes  
Wet space: Yes  
Addition: No  
Conversion: No

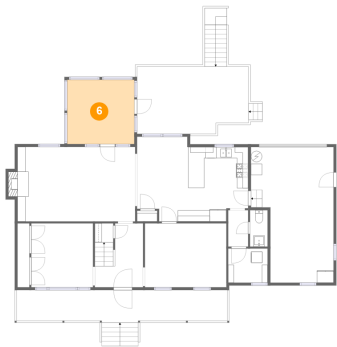
### 5 Floor 1 - Laundry



Max Dimensions: 7'1" x 6'1"  
Calculated Area: 43 sq. ft  
Included: Yes

Heated: Yes  
Finished: Yes  
Enclosed: Yes  
Contiguous: Yes  
Permitted: Yes  
Wet space: No  
Addition: No  
Conversion: No

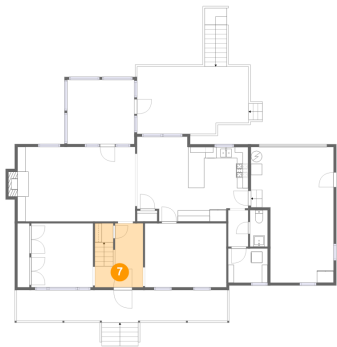
6 Floor 1 - Screened Porch



Max Dimensions: 11'11" x 11'6"  
Calculated Area: 138 sq. ft  
Included: No

Heated: No  
Finished: Yes  
Enclosed: No  
Contiguous: Yes  
Permitted: Yes  
Wet space: No  
Addition: No  
Conversion: No

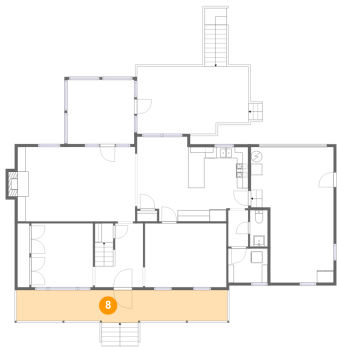
7 Floor 1 - Foyer



Max Dimensions: 8'8" x 11'5"  
Calculated Area: 97 sq. ft  
Included: Yes

Heated: Yes  
Finished: Yes  
Enclosed: Yes  
Contiguous: Yes  
Permitted: Yes  
Wet space: No  
Addition: No  
Conversion: No

8 Floor 1 - Porch



Max Dimensions: 37'8" x 5'10"  
Calculated Area: 209 sq. ft  
Included: No

Heated: No  
Finished: Yes  
Enclosed: No  
Contiguous: Yes  
Permitted: Yes  
Wet space: No  
Addition: No  
Conversion: No



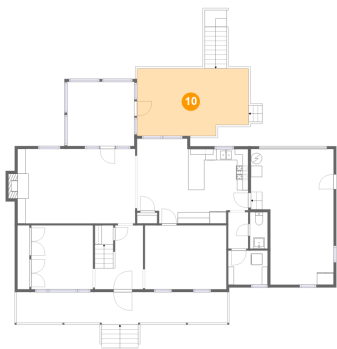
9 Floor 1 - Hall



Max Dimensions: 3'7" x 6'6"  
Calculated Area: 23 sq. ft  
Included: Yes

Heated: Yes  
Finished: Yes  
Enclosed: Yes  
Contiguous: Yes  
Permitted: Yes  
Wet space: No  
Addition: No  
Conversion: No

10 Floor 1 - Deck



Max Dimensions: 19'11" x 12'0"  
Calculated Area: 229 sq. ft  
Included: No

Heated: No  
Finished: Yes  
Enclosed: No  
Contiguous: Yes  
Permitted: Yes  
Wet space: No  
Addition: No  
Conversion: No

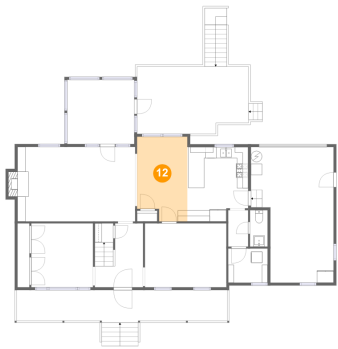
11 Floor 1 - Office



Max Dimensions: 11'0" x 11'5"  
Calculated Area: 126 sq. ft  
Included: Yes

Heated: Yes  
Finished: Yes  
Enclosed: Yes  
Contiguous: Yes  
Permitted: Yes  
Wet space: No  
Addition: No  
Conversion: No

12 Floor 1 - Breakfast Nook



Max Dimensions: 9'0" x 15'2"  
Calculated Area: 127 sq. ft  
Included: Yes

Heated: Yes  
Finished: Yes  
Enclosed: Yes  
Contiguous: Yes  
Permitted: Yes  
Wet space: No  
Addition: No  
Conversion: No

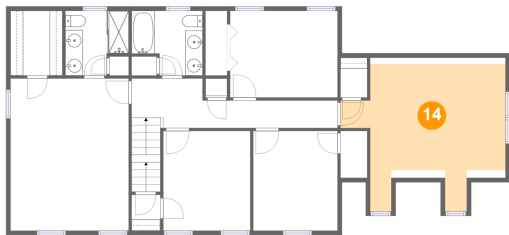
13 Floor 1 - Kitchen



Max Dimensions: 10'10" x 13'4"  
Calculated Area: 136 sq. ft  
Included: Yes

Heated: Yes  
Finished: Yes  
Enclosed: Yes  
Contiguous: Yes  
Permitted: Yes  
Wet space: No  
Addition: No  
Conversion: No

14 Floor 2 - Room



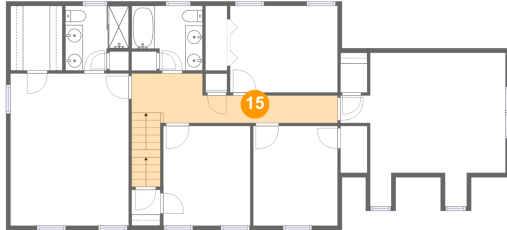
Max Dimensions: 18'10" x 17'7"  
Calculated Area: 221 sq. ft  
Included: Yes

Heated: Yes  
Finished: Yes  
Enclosed: Yes  
Contiguous: Yes  
Permitted: Yes  
Wet space: No  
Addition: No  
Conversion: No

## Home report

1519 Kingscross Road, Midlothian, Chesterfield County, Virginia,  
United States, 23114

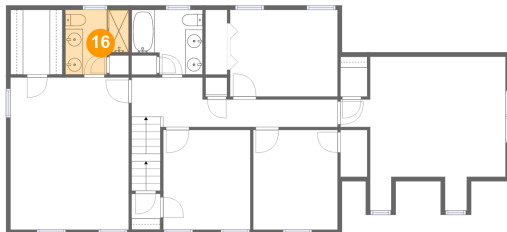
### 15 Floor 2 - Hall



Max Dimensions: 23'6" x 5'8"  
Calculated Area: 118 sq. ft  
Included: Yes

Heated: Yes  
Finished: Yes  
Enclosed: Yes  
Contiguous: Yes  
Permitted: Yes  
Wet space: No  
Addition: No  
Conversion: No

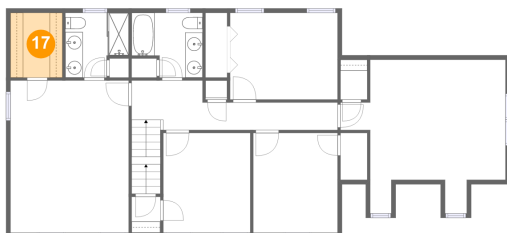
### 16 Floor 2 - Bath



Max Dimensions: 7'3" x 7'5"  
Calculated Area: 47 sq. ft  
Included: Yes

Heated: Yes  
Finished: Yes  
Enclosed: Yes  
Contiguous: Yes  
Permitted: Yes  
Wet space: Yes  
Addition: No  
Conversion: No

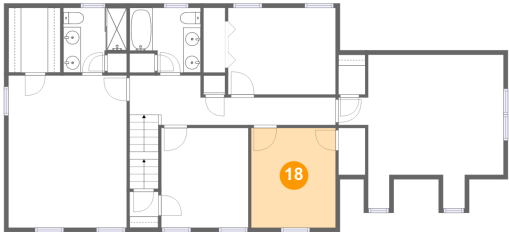
### 17 Floor 2 - W.I.C.



Max Dimensions: 5'11" x 7'5"  
Calculated Area: 44 sq. ft  
Included: Yes

Heated: Yes  
Finished: Yes  
Enclosed: Yes  
Contiguous: Yes  
Permitted: Yes  
Wet space: No  
Addition: No  
Conversion: No

18 Floor 2 - Bedroom



Max Dimensions: 9'7" x 11'5"  
Calculated Area: 110 sq. ft  
Included: Yes

Heated: Yes  
Finished: Yes  
Enclosed: Yes  
Contiguous: Yes  
Permitted: Yes  
Wet space: No  
Addition: No  
Conversion: No

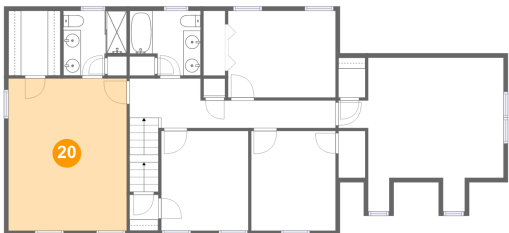
19 Floor 2 - Bedroom



Max Dimensions: 12'3" x 9'11"  
Calculated Area: 122 sq. ft  
Included: Yes

Heated: Yes  
Finished: Yes  
Enclosed: Yes  
Contiguous: Yes  
Permitted: Yes  
Wet space: No  
Addition: No  
Conversion: No

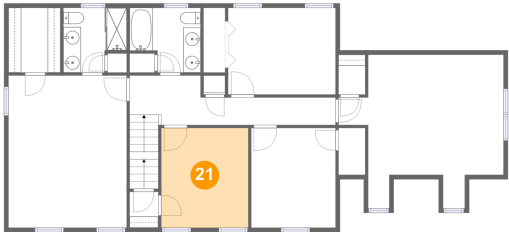
20 Floor 2 - Primary Bedroom



Max Dimensions: 13'6" x 17'4"  
Calculated Area: 235 sq. ft  
Included: Yes

Heated: Yes  
Finished: Yes  
Enclosed: Yes  
Contiguous: Yes  
Permitted: Yes  
Wet space: No  
Addition: No  
Conversion: No

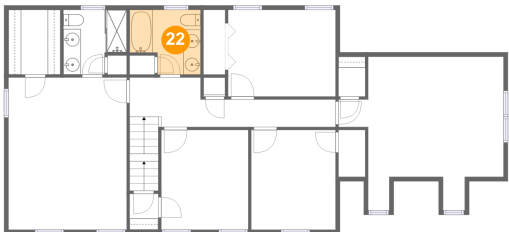
21 Floor 2 - Bedroom



Max Dimensions: 9'11" x 11'5"  
Calculated Area: 113 sq. ft  
Included: Yes

Heated: Yes  
Finished: Yes  
Enclosed: Yes  
Contiguous: Yes  
Permitted: Yes  
Wet space: No  
Addition: No  
Conversion: No

22 Floor 2 - Bath



Max Dimensions: 8'1" x 7'5"  
Calculated Area: 52 sq. ft  
Included: Yes

Heated: Yes  
Finished: Yes  
Enclosed: Yes  
Contiguous: Yes  
Permitted: Yes  
Wet space: Yes  
Addition: No  
Conversion: No