

Home data report

4403 Back Mountain Rd, Winchester, VA, US




Total Area: 2778 sq. ft

Below Ground: 875 sq. ft, Floor 2: 953 sq. ft, Floor 3: 950 sq. ft

Excluded: Porch 99 sq. ft, Deck 231 sq. ft, Walls: 196 sq. ft

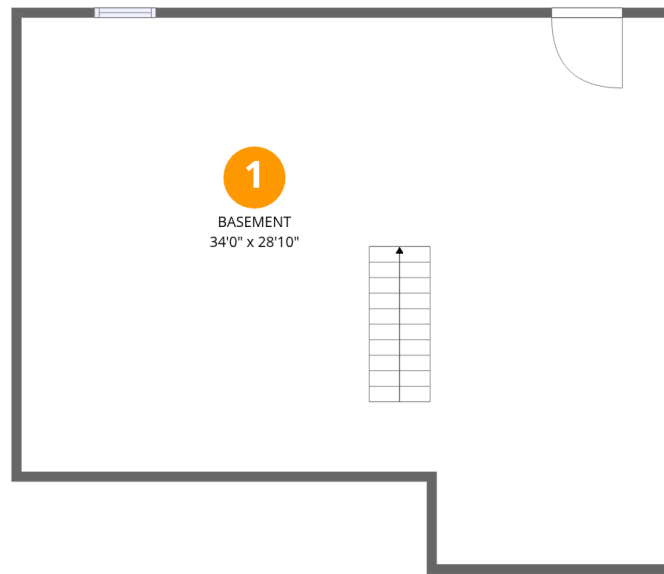
Property summary

 **3** Floors

 **3** Bedrooms

 **2** Bathrooms

 **1** Half baths



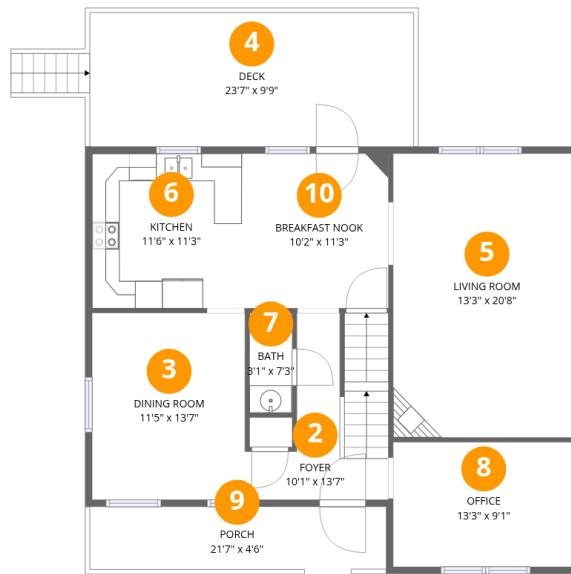
Room dimensions

Floor 1 Below grade

Total:875sqft

Excluded: 0sqft

#		Dimensions	sqft	Counted as living area
1	Basement	34'0" x 28'10"	875 sq. ft	Yes



Room dimensions

Floor 2

Total:953sqft

Excluded: 330sqft

#		Dimensions	sqft	Counted as living area
2	Foyer	10'1" x 13'7"	69 sq. ft	Yes
3	Dining Room	11'5" x 13'7"	153 sq. ft	Yes
4	Deck	23'7" x 9'9"	231 sq. ft	No
5	Living Room	13'3" x 20'8"	273 sq. ft	Yes
6	Kitchen	11'6" x 11'3"	130 sq. ft	Yes
7	Bath	3'1" x 7'3"	23 sq. ft	Yes
8	Office	13'3" x 9'1"	120 sq. ft	Yes
9	Porch	21'7" x 4'6"	99 sq. ft	No
10	Breakfast Nook	10'2" x 11'3"	114 sq. ft	Yes



Room dimensions

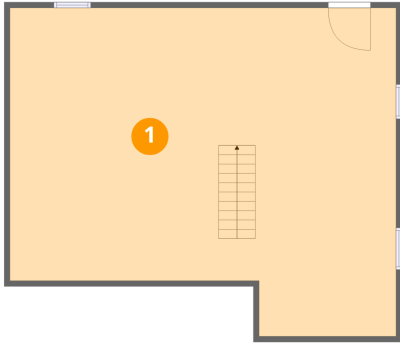
Floor 3

Total:950sqft

Excluded: 0sqft

#		Dimensions	sqft	Counted as living area
11	W.I.C.	6'9" x 6'3"	42 sq. ft	Yes
12	Hall	9'3" x 17'1"	91 sq. ft	Yes
13	Bedroom	12'1" x 11'3"	126 sq. ft	Yes
14	Primary Bath	10'3" x 11'3"	87 sq. ft	Yes
15	Bath	7'10" x 7'9"	52 sq. ft	Yes
16	Bedroom	14'7" x 11'2"	163 sq. ft	Yes
17	Primary Bedroom	13'3" x 18'6"	245 sq. ft	Yes
18	Laundry	5'2" x 7'9"	40 sq. ft	Yes

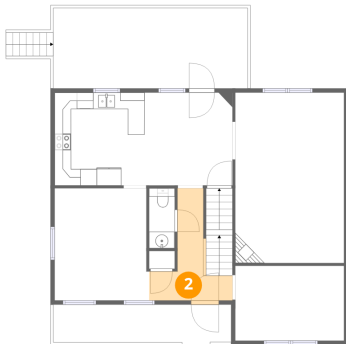
1 Floor 1 - Basement



Dimensions: 34'0" x 28'10"
Area: 875 sq. ft
Counted as living area: Yes

Heated: Yes
Finished: Yes
Enclosed: Yes
Contiguous: Yes
Permitted: Yes
Wet space: No
Addition: No
Conversion: No

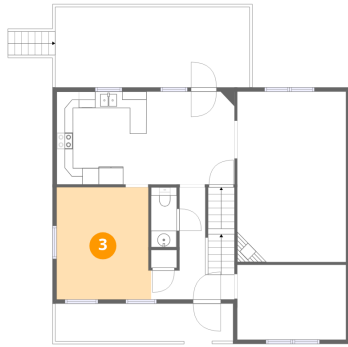
2 Floor 2 - Foyer



Dimensions: 10'1" x 13'7"
Area: 69 sq. ft
Counted as living area: Yes

Heated: Yes
Finished: Yes
Enclosed: Yes
Contiguous: Yes
Permitted: Yes
Wet space: No
Addition: No
Conversion: No

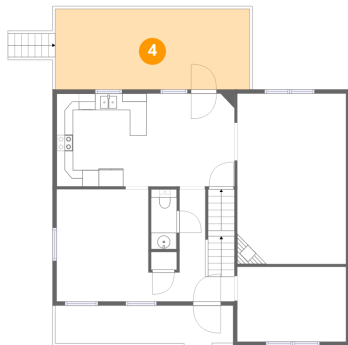
3 Floor 2 - Dining Room



Dimensions: 11'5" x 13'7"
Area: 153 sq. ft
Counted as living area: Yes

Heated: Yes
Finished: Yes
Enclosed: Yes
Contiguous: Yes
Permitted: Yes
Wet space: No
Addition: No
Conversion: No

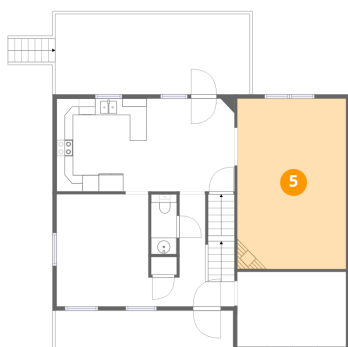
4 Floor 2 - Deck



Dimensions: 23'7" x 9'9"
Area: 231 sq. ft
Counted as living area: No

Heated: No
Finished: No
Enclosed: No
Contiguous: Yes
Permitted: Yes
Wet space: No
Addition: No
Conversion: No

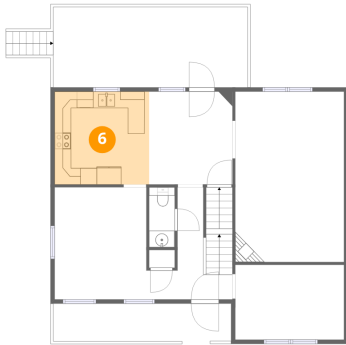
5 Floor 2 - Living Room



Dimensions: 13'3" x 20'8"
Area: 273 sq. ft
Counted as living area: Yes

Heated: Yes
Finished: Yes
Enclosed: Yes
Contiguous: Yes
Permitted: Yes
Wet space: No
Addition: No
Conversion: No

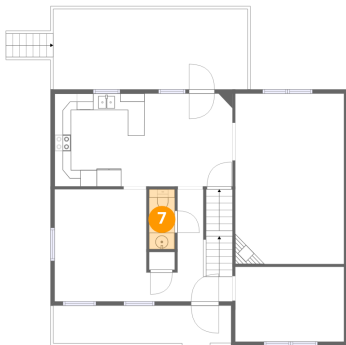
6 Floor 2 - Kitchen



Dimensions: 11'6" x 11'3"
Area: 130 sq. ft
Counted as living area: Yes

Heated: Yes
Finished: Yes
Enclosed: Yes
Contiguous: Yes
Permitted: Yes
Wet space: No
Addition: No
Conversion: No

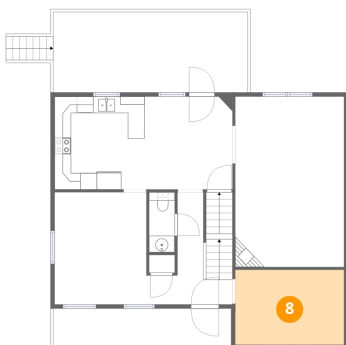
7 Floor 2 - Bath



Dimensions: 3'1" x 7'3"
Area: 23 sq. ft
Counted as living area: Yes

Heated: Yes
Finished: Yes
Enclosed: Yes
Contiguous: Yes
Permitted: Yes
Wet space: Yes
Addition: No
Conversion: No

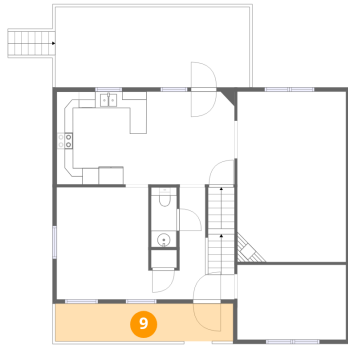
8 Floor 2 - Office



Dimensions: 13'3" x 9'1"
Area: 120 sq. ft
Counted as living area: Yes

Heated: Yes
Finished: Yes
Enclosed: Yes
Contiguous: Yes
Permitted: Yes
Wet space: No
Addition: No
Conversion: No

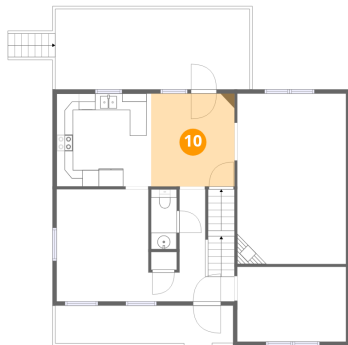
9 Floor 2 - Porch



Dimensions: 21'7" x 4'6"
Area: 99 sq. ft
Counted as living area: No

Heated: No
Finished: No
Enclosed: No
Contiguous: Yes
Permitted: Yes
Wet space: No
Addition: No
Conversion: No

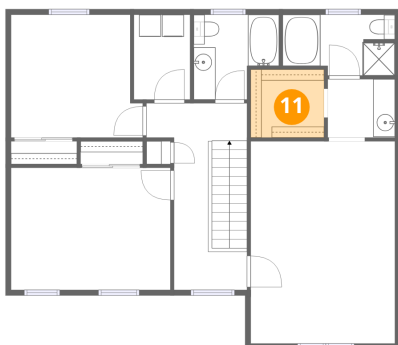
10 Floor 2 - Breakfast Nook



Dimensions: 10'2" x 11'3"
Area: 114 sq. ft
Counted as living area: Yes

Heated: Yes
Finished: Yes
Enclosed: Yes
Contiguous: Yes
Permitted: Yes
Wet space: No
Addition: No
Conversion: No

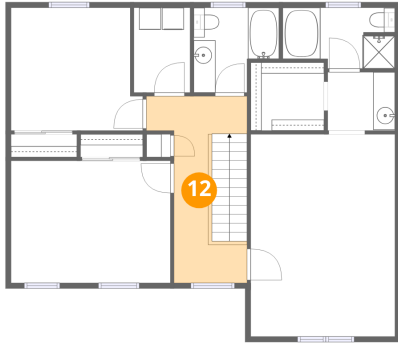
11 Floor 3 - W.I.C.



Dimensions: 6'9" x 6'3"
Area: 42 sq. ft
Counted as living area: Yes

Heated: Yes
Finished: Yes
Enclosed: Yes
Contiguous: Yes
Permitted: Yes
Wet space: No
Addition: No
Conversion: No

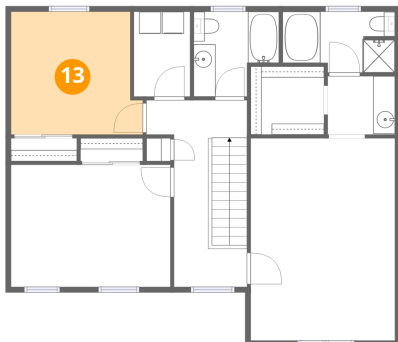
12 Floor 3 - Hall



Dimensions: 9'3" x 17'1"
Area: 91 sq. ft
Counted as living area: Yes

Heated: Yes
Finished: Yes
Enclosed: Yes
Contiguous: Yes
Permitted: Yes
Wet space: No
Addition: No
Conversion: No

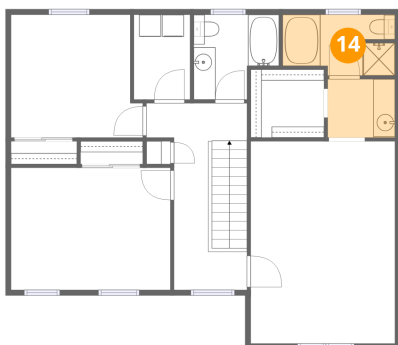
13 Floor 3 - Bedroom



Dimensions: 12'1" x 11'3"
Area: 126 sq. ft
Counted as living area: Yes

Heated: Yes
Finished: Yes
Enclosed: Yes
Contiguous: Yes
Permitted: Yes
Wet space: No
Addition: No
Conversion: No

14 Floor 3 - Primary Bath



Dimensions: 10'3" x 11'3"
Area: 87 sq. ft
Counted as living area: Yes

Heated: Yes
Finished: Yes
Enclosed: Yes
Contiguous: Yes
Permitted: Yes
Wet space: Yes
Addition: No
Conversion: No

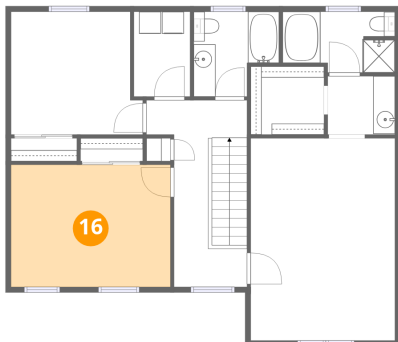
15 Floor 3 - Bath



Dimensions: 7'10" x 7'9"
Area: 52 sq. ft
Counted as living area: Yes

Heated: Yes
Finished: Yes
Enclosed: Yes
Contiguous: Yes
Permitted: Yes
Wet space: Yes
Addition: No
Conversion: No

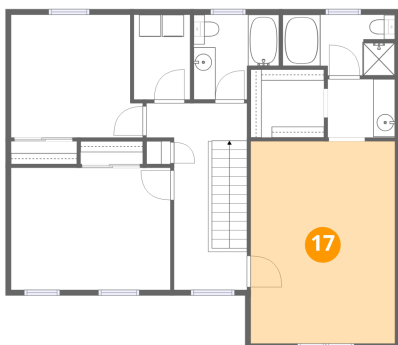
16 Floor 3 - Bedroom



Dimensions: 14'7" x 11'2"
Area: 163 sq. ft
Counted as living area: Yes

Heated: Yes
Finished: Yes
Enclosed: Yes
Contiguous: Yes
Permitted: Yes
Wet space: No
Addition: No
Conversion: No

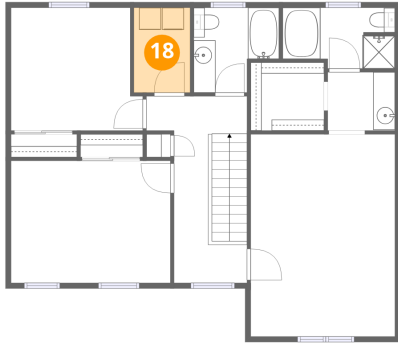
17 Floor 3 - Primary Bedroom



Dimensions: 13'3" x 18'6"
Area: 245 sq. ft
Counted as living area: Yes

Heated: Yes
Finished: Yes
Enclosed: Yes
Contiguous: Yes
Permitted: Yes
Wet space: No
Addition: No
Conversion: No

18 Floor 3 - Laundry



Dimensions: 5'2" x 7'9"
Area: 40 sq. ft
Counted as living area: Yes

Heated: Yes
Finished: Yes
Enclosed: Yes
Contiguous: Yes
Permitted: Yes
Wet space: No
Addition: No
Conversion: No