

Home data report

65 Chatsworth Drive, Lytton Park, Uptown, Toronto, Ontario, Canada, M4R 1R6



Total Area: 2684 sq. ft

1st Floor: 788 sq. ft, 2nd Floor: 1072 sq. ft, 3rd Floor: 189 sq. ft, 4th Floor: 635 sq. ft  
Excluded: Fireplace 20 sq. ft, Low ceiling 64 sq. ft

Property summary

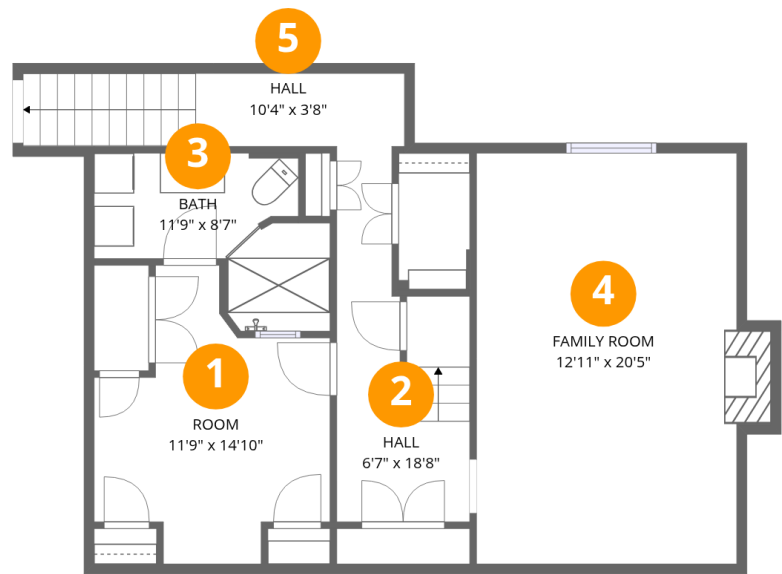
 **4** Floors

 **3** Bedrooms

 **2** Bathrooms

 **1** Half baths

65 Chatsworth Drive, Lytton Park, Uptown, Toronto, Ontario, Canada, M4R 1R6

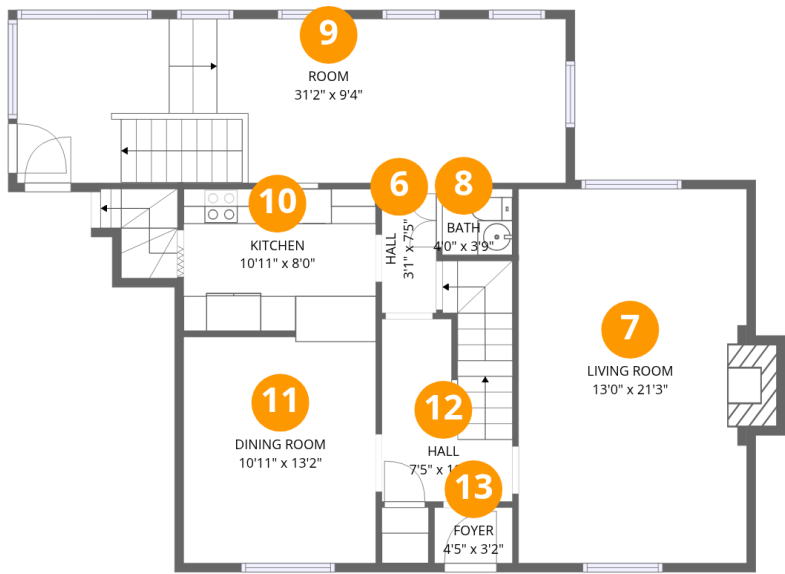


Room dimensions

Floor 1 Total:788sqft   Excluded: 10sqft

#		Dimensions	sqft	Counted as living area
1	Room	11'9" x 14'10"	124 sq. ft	Yes
2	Hall	6'7" x 18'8"	93 sq. ft	Yes
3	Bath	11'9" x 8'7"	74 sq. ft	Yes
4	Family Room	12'11" x 20'5"	273 sq. ft	Yes
5	Hall	10'4" x 3'8"	69 sq. ft	Yes

65 Chatsworth Drive, Lytton Park, Uptown, Toronto, Ontario, Canada, M4R 1R6



Room dimensions

Floor 2 Total:1072sqft    Excluded: 10sqft

#		Dimensions	sqft	Counted as living area
6	Hall	3'1" x 7'5"	23 sq. ft	Yes
7	Living Room	13'0" x 21'3"	283 sq. ft	Yes
8	Bath	4'0" x 3'9"	15 sq. ft	Yes
9	Room	31'2" x 9'4"	291 sq. ft	Yes
10	Kitchen	10'11" x 8'0"	88 sq. ft	Yes
11	Dining Room	10'11" x 13'2"	142 sq. ft	Yes
12	Hall	7'5" x 10'4"	89 sq. ft	Yes
13	Foyer	4'5" x 3'2"	14 sq. ft	Yes

65 Chatsworth Drive, Lytton Park, Uptown, Toronto, Ontario,  
Canada, M4R 1R6

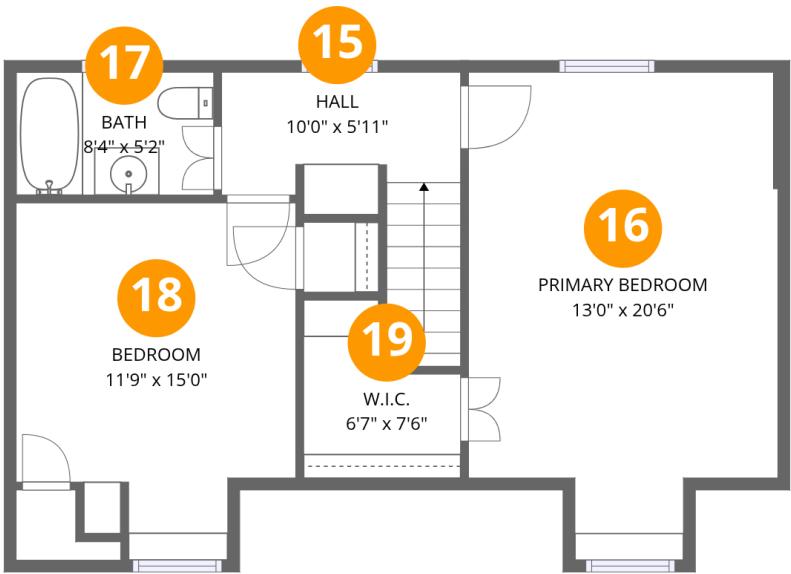


Room dimensions

Floor 3 Total:189sqft   Excluded: 51sqft

#		Dimensions	sqft	Counted as living area
14	Bedroom	11'3" x 18'4"	168 sq. ft	Yes

65 Chatsworth Drive, Lytton Park, Uptown, Toronto, Ontario, Canada, M4R 1R6



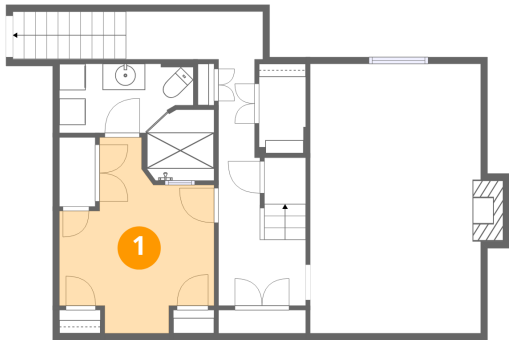
Room dimensions

Floor 4 Total:635sqft   Excluded: 13sqft

#		Dimensions	sqft	Counted as living area
15	Hall	10'0" x 5'11"	76 sq. ft	Yes
16	Primary Bedroom	13'0" x 20'6"	237 sq. ft	Yes
17	Bath	8'4" x 5'2"	43 sq. ft	Yes
18	Bedroom	11'9" x 15'0"	154 sq. ft	Yes
19	W.I.C.	6'7" x 7'6"	38 sq. ft	Yes

65 Chatsworth Drive, Lytton Park, Uptown, Toronto, Ontario,  
Canada, M4R 1R6

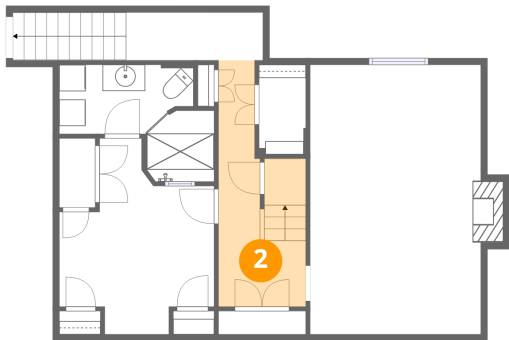
1 Floor 1 - Room



Dimensions: 11'9" x 14'10"  
Area: 124 sq. ft  
Counted as living area: Yes

Heated: Yes  
Finished: Yes  
Enclosed: Yes  
Contiguous: Yes  
Permitted: Yes  
Wet space: No  
Addition: No  
Conversion: No

2 Floor 1 - Hall

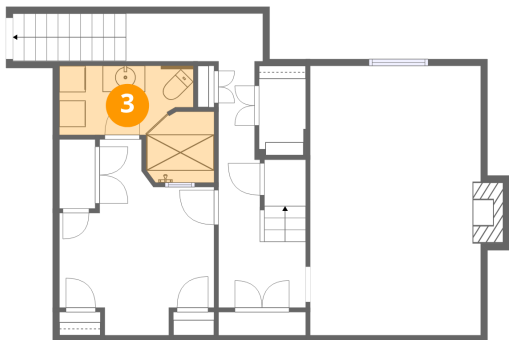


Dimensions: 6'7" x 18'8"  
Area: 93 sq. ft  
Counted as living area: Yes

Heated: Yes  
Finished: Yes  
Enclosed: Yes  
Contiguous: Yes  
Permitted: Yes  
Wet space: No  
Addition: No  
Conversion: No

65 Chatsworth Drive, Lytton Park, Uptown, Toronto, Ontario, Canada, M4R 1R6

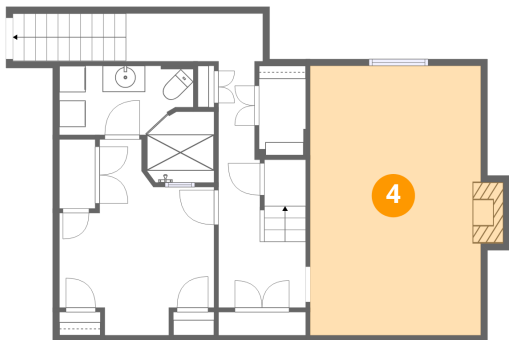
3 Floor 1 - Bath



Dimensions: 11'9" x 8'7"  
Area: 74 sq. ft  
Counted as living area: Yes

Heated: Yes  
Finished: Yes  
Enclosed: Yes  
Contiguous: Yes  
Permitted: Yes  
Wet space: Yes  
Addition: No  
Conversion: No

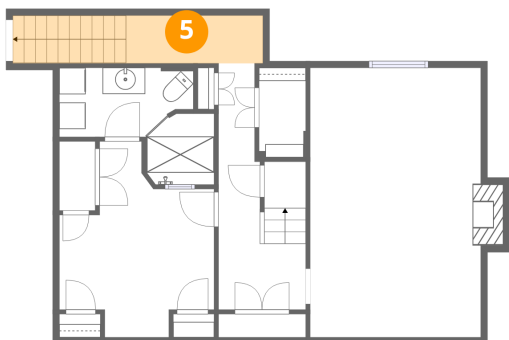
4 Floor 1 - Family Room



Dimensions: 12'11" x 20'5"  
Area: 273 sq. ft  
Counted as living area: Yes

Heated: Yes  
Finished: Yes  
Enclosed: Yes  
Contiguous: Yes  
Permitted: Yes  
Wet space: No  
Addition: No  
Conversion: No

5 Floor 1 - Hall



Dimensions: 10'4" x 3'8"  
Area: 69 sq. ft  
Counted as living area: Yes

Heated: Yes  
Finished: Yes  
Enclosed: Yes  
Contiguous: Yes  
Permitted: Yes  
Wet space: No  
Addition: No  
Conversion: No

## Home data report

65 Chatsworth Drive, Lytton Park, Uptown, Toronto, Ontario,  
Canada, M4R 1R6

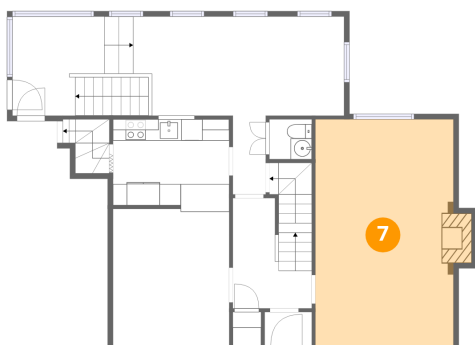
### 6 Floor 2 - Hall



Dimensions: 3'1" x 7'5"  
Area: 23 sq. ft  
Counted as living area: Yes

Heated: Yes  
Finished: Yes  
Enclosed: Yes  
Contiguous: Yes  
Permitted: Yes  
Wet space: No  
Addition: No  
Conversion: No

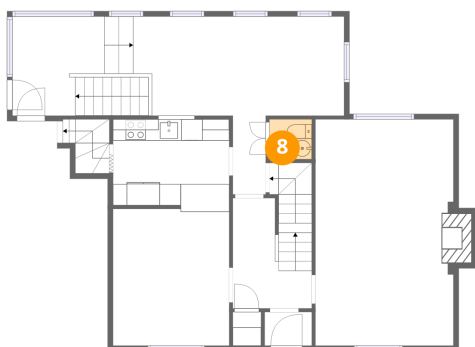
### 7 Floor 2 - Living Room



Dimensions: 13'0" x 21'3"  
Area: 283 sq. ft  
Counted as living area: Yes

Heated: Yes  
Finished: Yes  
Enclosed: Yes  
Contiguous: Yes  
Permitted: Yes  
Wet space: No  
Addition: No  
Conversion: No

### 8 Floor 2 - Bath



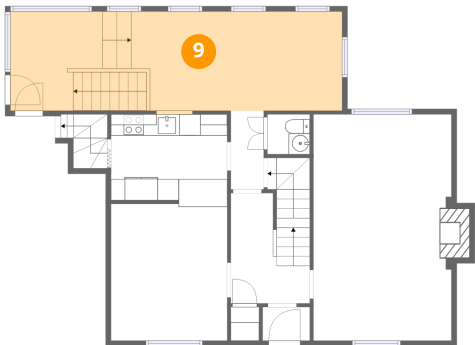
Dimensions: 4'0" x 3'9"  
Area: 15 sq. ft  
Counted as living area: Yes

Heated: Yes  
Finished: Yes  
Enclosed: Yes  
Contiguous: Yes  
Permitted: Yes  
Wet space: No  
Addition: No  
Conversion: No



65 Chatsworth Drive, Lytton Park, Uptown, Toronto, Ontario,  
Canada, M4R 1R6

9 Floor 2 - Room



Dimensions: 31'2" x 9'4"  
Area: 291 sq. ft  
Counted as living area: Yes

Heated: Yes  
Finished: Yes  
Enclosed: Yes  
Contiguous: Yes  
Permitted: Yes  
Wet space: No  
Addition: No  
Conversion: No

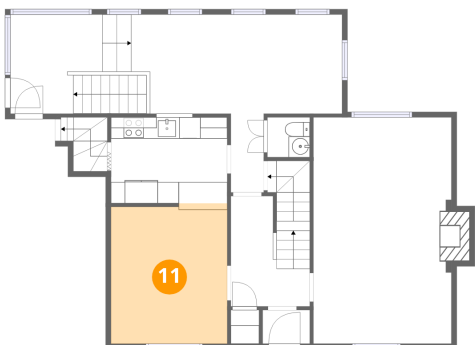
10 Floor 2 - Kitchen



Dimensions: 10'11" x 8'0"  
Area: 88 sq. ft  
Counted as living area: Yes

Heated: Yes  
Finished: Yes  
Enclosed: Yes  
Contiguous: Yes  
Permitted: Yes  
Wet space: No  
Addition: No  
Conversion: No

11 Floor 2 - Dining Room

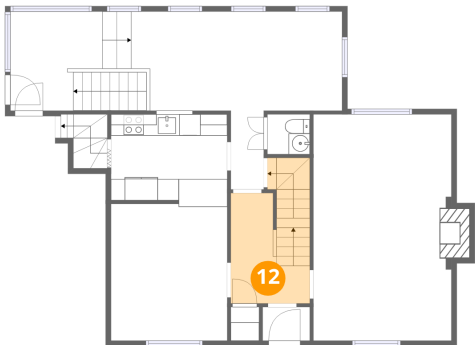


Dimensions: 10'11" x 13'2"  
Area: 142 sq. ft  
Counted as living area: Yes

Heated: Yes  
Finished: Yes  
Enclosed: Yes  
Contiguous: Yes  
Permitted: Yes  
Wet space: No  
Addition: No  
Conversion: No

65 Chatsworth Drive, Lytton Park, Uptown, Toronto, Ontario,  
Canada, M4R 1R6

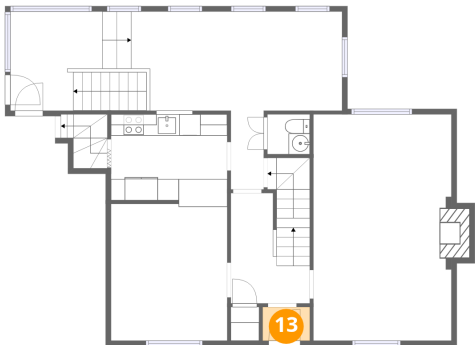
12 Floor 2 - Hall



Dimensions: 7'5" x 10'4"  
Area: 89 sq. ft  
Counted as living area: Yes

Heated: Yes  
Finished: Yes  
Enclosed: Yes  
Contiguous: Yes  
Permitted: Yes  
Wet space: No  
Addition: No  
Conversion: No

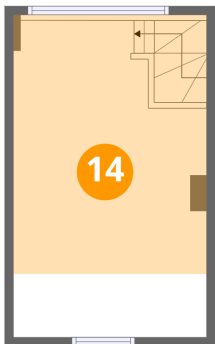
13 Floor 2 - Foyer



Dimensions: 4'5" x 3'2"  
Area: 14 sq. ft  
Counted as living area: Yes

Heated: Yes  
Finished: Yes  
Enclosed: Yes  
Contiguous: Yes  
Permitted: Yes  
Wet space: No  
Addition: No  
Conversion: No

14 Floor 3 - Bedroom

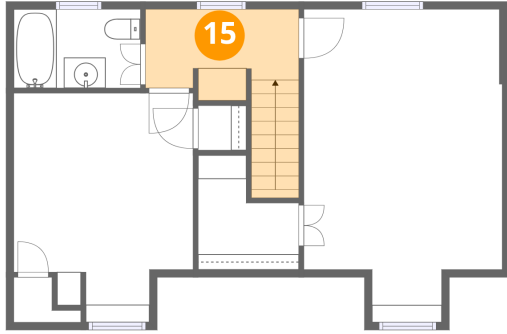


Dimensions: 11'3" x 18'4"  
Area: 168 sq. ft  
Counted as living area: Yes

Heated: Yes  
Finished: Yes  
Enclosed: Yes  
Contiguous: Yes  
Permitted: Yes  
Wet space: No  
Addition: No  
Conversion: No

65 Chatsworth Drive, Lytton Park, Uptown, Toronto, Ontario,  
Canada, M4R 1R6

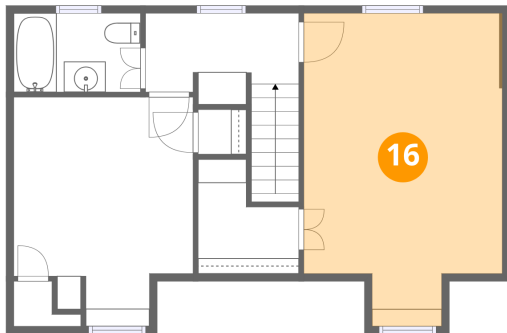
### 15 Floor 4 - Hall



Dimensions: 10'0" x 5'11"  
Area: 76 sq. ft  
Counted as living area: Yes

Heated: Yes  
Finished: Yes  
Enclosed: Yes  
Contiguous: Yes  
Permitted: Yes  
Wet space: No  
Addition: No  
Conversion: No

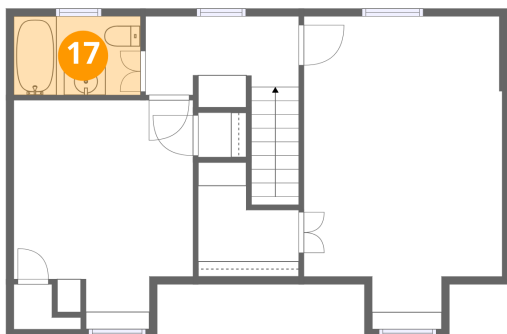
### 16 Floor 4 - Primary Bedroom



Dimensions: 13'0" x 20'6"  
Area: 237 sq. ft  
Counted as living area: Yes

Heated: Yes  
Finished: Yes  
Enclosed: Yes  
Contiguous: Yes  
Permitted: Yes  
Wet space: No  
Addition: No  
Conversion: No

### 17 Floor 4 - Bath



Dimensions: 8'4" x 5'2"  
Area: 43 sq. ft  
Counted as living area: Yes

Heated: Yes  
Finished: Yes  
Enclosed: Yes  
Contiguous: Yes  
Permitted: Yes  
Wet space: Yes  
Addition: No  
Conversion: No

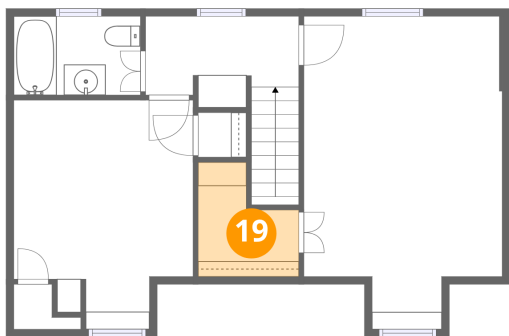
**18** Floor 4 - Bedroom



Dimensions: 11'9" x 15'0"  
Area: 154 sq. ft  
Counted as living area: Yes

Heated: Yes  
Finished: Yes  
Enclosed: Yes  
Contiguous: Yes  
Permitted: Yes  
Wet space: No  
Addition: No  
Conversion: No

**19** Floor 4 - W.I.C.



Dimensions: 6'7" x 7'6"  
Area: 38 sq. ft  
Counted as living area: Yes

Heated: Yes  
Finished: Yes  
Enclosed: Yes  
Contiguous: Yes  
Permitted: Yes  
Wet space: No  
Addition: No  
Conversion: No