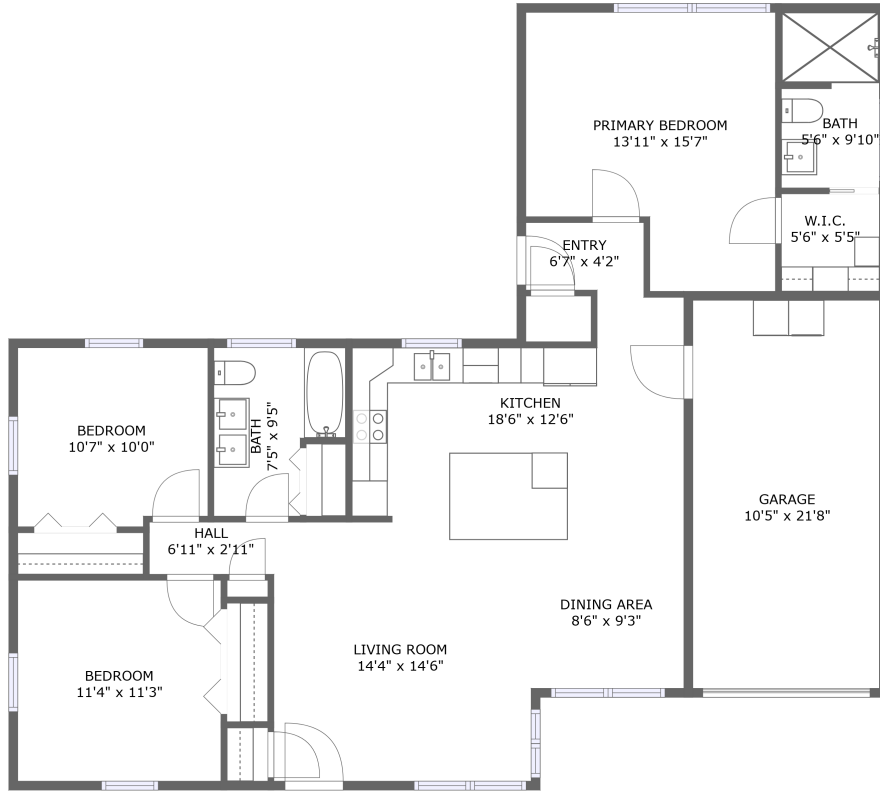


# 866 Lantana Avenue, Mandalay, Clearwater Beach, Pinellas County, Florida, United States,




FLOOR 1

## Property Summary

 **1** garages

 **3** bedrooms

 **2** bathrooms

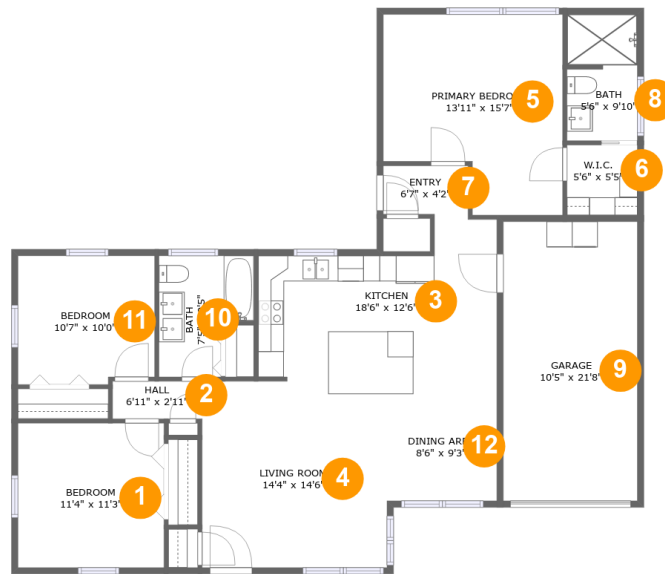
 **0** half baths

 **1** floors

 **1,284** Gross Living Area sqft

 **1,526** total sqft

# 866 Lantana Avenue, Mandalay, Clearwater Beach, Pinellas County, Florida, United States,



## Room Dimensions

Floor 1

Total sqft: 1526

Living area: 1284

#	Room name	Dimensions	Area (sqft)	Counted as Living Area
1	Bedroom	11'4" x 11'3"	127 sq. ft	Yes
2	Hall	6'11" x 2'11"	20 sq. ft	Yes
3	Kitchen	18'6" x 12'6"	194 sq. ft	Yes
4	Living Room	14'4" x 14'6"	208 sq. ft	Yes
5	Primary Bedroom	13'11" x 15'7"	188 sq. ft	Yes
6	W.i.c.	5'6" x 5'5"	30 sq. ft	Yes
7	Entry	6'7" x 4'2"	26 sq. ft	Yes
8	Bath	5'6" x 9'10"	53 sq. ft	Yes
9	Garage	10'5" x 21'8"	226 sq. ft	No
10	Bath	7'5" x 9'5"	58 sq. ft	Yes
11	Bedroom	10'7" x 10'0"	104 sq. ft	Yes

Scan captured on Tue, 13 Aug 2024 15:01:58 GMT

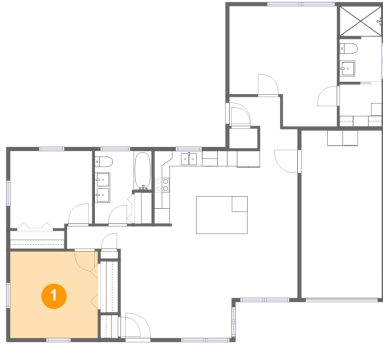
Information is calculated by CubiCasa technology; deemed highly reliable but not guaranteed.

**866 Lantana Avenue, Mandalay, Clearwater  
Beach, Pinellas County, Florida, United States,**

#	Room name	Dimensions	Area (sqft)	Counted as Living Area
12	Dining Area	8'6" x 9'3"	79 sq. ft	Yes

# 866 Lantana Avenue, Mandalay, Clearwater Beach, Pinellas County, Florida, United States,

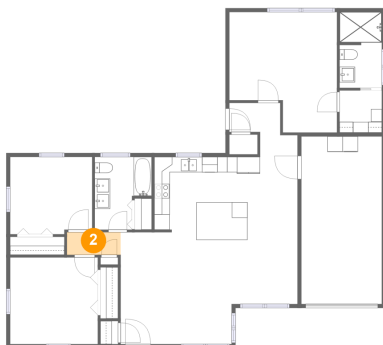
## 1 Floor 1 - Bedroom



Dimensions: 11'4" x 11'3"  
Area: 127 sq. ft  
Counted as Living Area:  
Yes

Heated: Yes  
Finished: Yes  
Enclosed: Yes  
Contiguous:  
Yes  
Permitted: Yes  
Wet Space: No  
Addition: No  
Conversion: No

## 2 Floor 1 - Hall

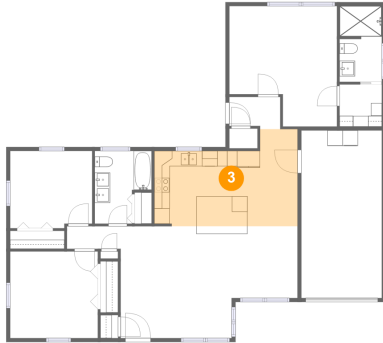


Dimensions: 6'11" x 2'11"  
Area: 20 sq. ft  
Counted as Living Area:  
Yes

Heated: Yes  
Finished: Yes  
Enclosed: Yes  
Contiguous:  
Yes  
Permitted: Yes  
Wet Space: No  
Addition: No  
Conversion: No

# 866 Lantana Avenue, Mandalay, Clearwater Beach, Pinellas County, Florida, United States,

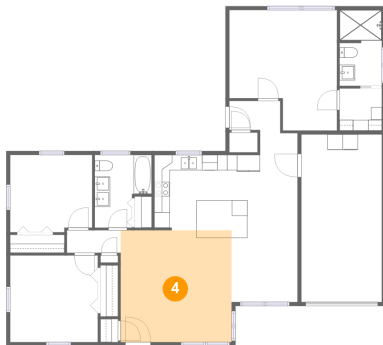
## 3 Floor 1 - Kitchen



Dimensions: 18'6" x 12'6"  
Area: 194 sq. ft  
Counted as Living Area:  
Yes

Heated: Yes  
Finished: Yes  
Enclosed: Yes  
Contiguous:  
Yes  
Permitted: Yes  
Wet Space: No  
Addition: No  
Conversion: No

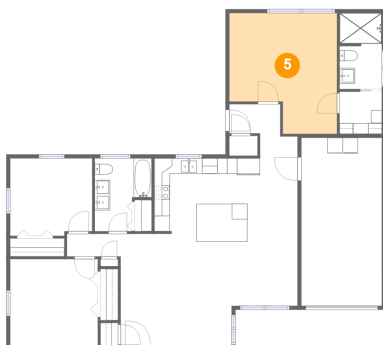
## 4 Floor 1 - Living Room



Dimensions: 14'4" x 14'6"  
Area: 208 sq. ft  
Counted as Living Area:  
Yes

Heated: Yes  
Finished: Yes  
Enclosed: Yes  
Contiguous:  
Yes  
Permitted: Yes  
Wet Space: No  
Addition: No  
Conversion: No

## 5 Floor 1 - Primary Bedroom

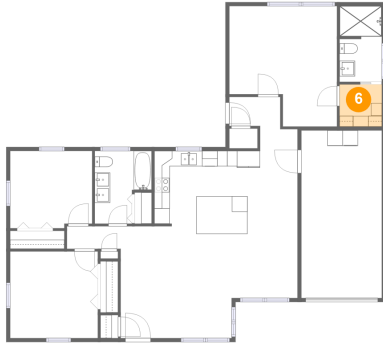


Dimensions: 13'11" x 15'7"  
Area: 188 sq. ft  
Counted as Living Area:  
Yes

Heated: Yes  
Finished: Yes  
Enclosed: Yes  
Contiguous:  
Yes  
Permitted: Yes  
Wet Space: No  
Addition: No  
Conversion: No

# 866 Lantana Avenue, Mandalay, Clearwater Beach, Pinellas County, Florida, United States,

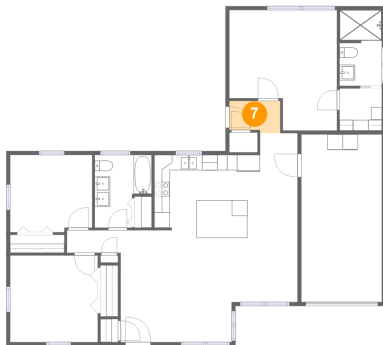
## 6 Floor 1 - W.i.c.



Dimensions: 5'6" x 5'5"  
Area: 30 sq. ft  
Counted as Living Area:  
Yes

Heated: Yes  
Finished: Yes  
Enclosed: Yes  
Contiguous:  
Yes  
Permitted: Yes  
Wet Space: No  
Addition: No  
Conversion: No

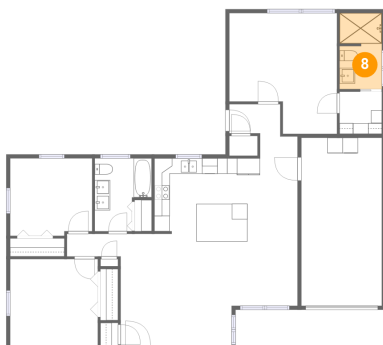
## 7 Floor 1 - Entry



Dimensions: 6'7" x 4'2"  
Area: 26 sq. ft  
Counted as Living Area:  
Yes

Heated: Yes  
Finished: Yes  
Enclosed: Yes  
Contiguous:  
Yes  
Permitted: Yes  
Wet Space: No  
Addition: No  
Conversion: No

## 8 Floor 1 - Bath

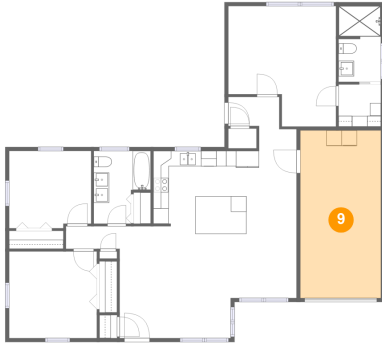


Dimensions: 5'6" x 9'10"  
Area: 53 sq. ft  
Counted as Living Area:  
Yes

Heated: Yes  
Finished: Yes  
Enclosed: Yes  
Contiguous:  
Yes  
Permitted: Yes  
Wet Space: Yes  
Addition: No  
Conversion: No

# 866 Lantana Avenue, Mandalay, Clearwater Beach, Pinellas County, Florida, United States,

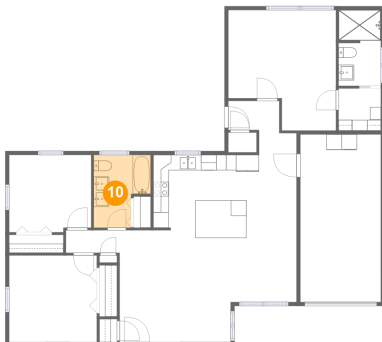
## 9 Floor 1 - Garage



Dimensions: 10'5" x 21'8"  
Area: 226 sq. ft  
Counted as Living Area: No

Heated: No  
Finished: No  
Enclosed: Yes  
Contiguous: Yes  
Permitted: Yes  
Wet Space: No  
Addition: No  
Conversion: No

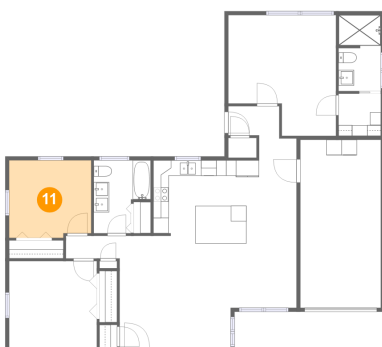
## 10 Floor 1 - Bath



Dimensions: 7'5" x 9'5"  
Area: 58 sq. ft  
Counted as Living Area: Yes

Heated: Yes  
Finished: Yes  
Enclosed: Yes  
Contiguous: Yes  
Permitted: Yes  
Wet Space: Yes  
Addition: No  
Conversion: No

## 11 Floor 1 - Bedroom

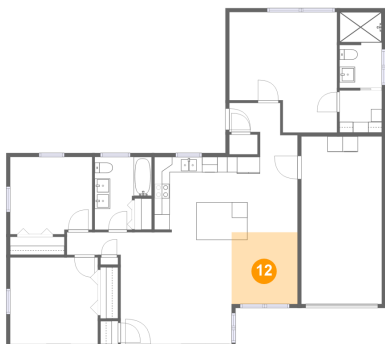


Dimensions: 10'7" x 10'0"  
Area: 104 sq. ft  
Counted as Living Area: Yes

Heated: Yes  
Finished: Yes  
Enclosed: Yes  
Contiguous: Yes  
Permitted: Yes  
Wet Space: No  
Addition: No  
Conversion: No

# 866 Lantana Avenue, Mandalay, Clearwater Beach, Pinellas County, Florida, United States,

## 12 Floor 1 - Dining Area



Dimensions: 8'6" x 9'3"  
Area: 79 sq. ft  
Counted as Living Area:  
Yes

Heated: Yes  
Finished: Yes  
Enclosed: Yes  
Contiguous:  
Yes  
Permitted: Yes  
Wet Space: No  
Addition: No  
Conversion: No