



Home report


10610 Slings Gap Road, Bent Mountain, Roanoke County,  
Virginia, United States, 24059




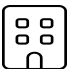
Property summary


 **0** Garages


 **4** Bedrooms

 **3** Bathrooms

 **0** Half baths

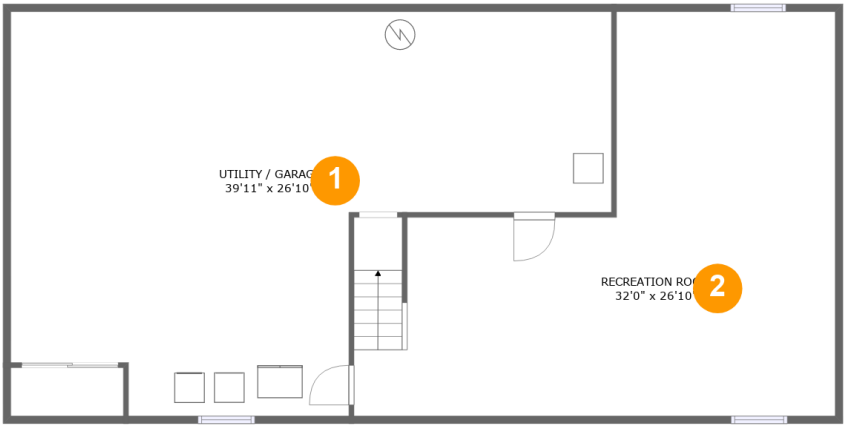
 **2** Floors

 **2,314** Gross living area sqft

 **4,230** Total sqft

Home report

10610 Slings Gap Road, Bent Mountain, Roanoke County,  
Virginia, United States, 24059



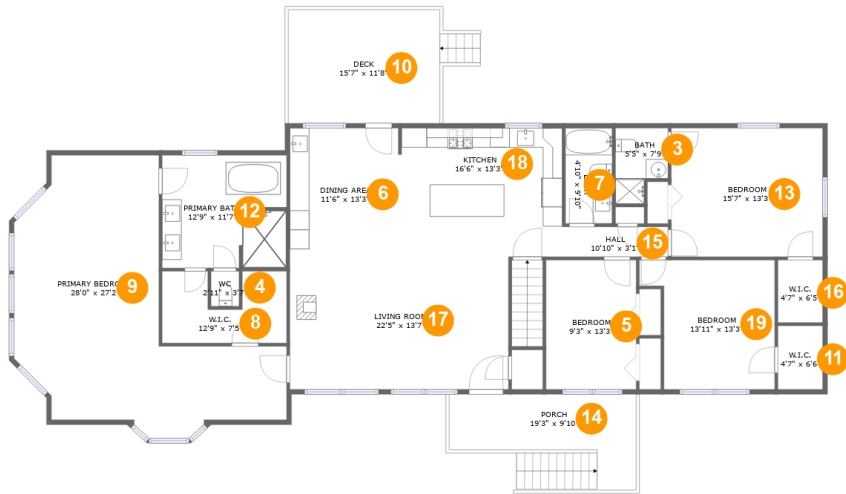
Room dimensions

Floor 1 Total sqft: 1553    Living area: 0

#		Dimensions	sqft	Counted as living area
1	Utility / Garage	39'11" x 26'10"	807 sq. ft	No
2	Recreation Room	32'0" x 26'10"	618 sq. ft	No

Home report

10610 Slings Gap Road, Bent Mountain, Roanoke County,  
Virginia, United States, 24059



Room dimensions

Floor 2 Total sqft: 2677    Living area: 2314

#		Dimensions	sqft	Counted as living area
3	Bath	5'5" x 7'9"	36 sq. ft	Yes
4	WC	2'11" x 3'7"	10 sq. ft	Yes
5	Bedroom	9'3" x 13'3"	123 sq. ft	Yes
6	Dining Area	11'6" x 13'3"	151 sq. ft	Yes
7	Bath	4'10" x 9'10"	47 sq. ft	Yes
8	W.I.C.	12'9" x 7'5"	80 sq. ft	Yes
9	Primary Bedroom	28'0" x 27'2"	468 sq. ft	Yes
10	Deck	15'7" x 11'8"	194 sq. ft	No
11	W.I.C.	4'7" x 6'6"	30 sq. ft	Yes
12	Primary Bath	12'9" x 11'7"	146 sq. ft	Yes
13	Bedroom	15'7" x 13'3"	206 sq. ft	Yes

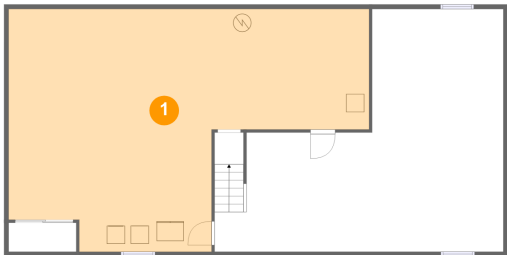
## Home report

**10610 Slings Gap Road, Bent Mountain, Roanoke County,  
Virginia, United States, 24059**

#		Dimensions	sqft	Counted as living area
14	Porch	19'3" x 9'10"	157 sq. ft	No
15	Hall	10'10" x 3'1"	33 sq. ft	Yes
16	W.I.C.	4'7" x 6'5"	30 sq. ft	Yes
17	Living Room	22'5" x 13'7"	306 sq. ft	Yes
18	Kitchen	16'6" x 13'3"	218 sq. ft	Yes
19	Bedroom	13'11" x 13'3"	158 sq. ft	Yes

10610 Slings Gap Road, Bent Mountain, Roanoke County,  
Virginia, United States, 24059

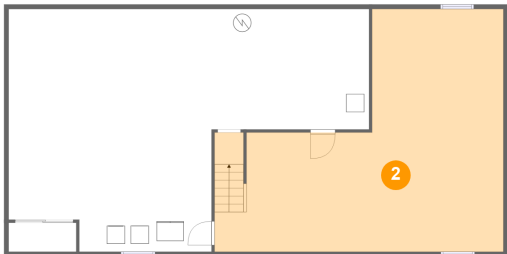
1 Floor 1 - Utility / Garage



Dimensions: 39'11" x 26'10"  
Area: 807 sq. ft  
Counted as living area: No

Heated: Yes  
Finished: No  
Enclosed: Yes  
Contiguous: Yes  
Permitted: Yes  
Wet space: No  
Addition: No  
Conversion: No

2 Floor 1 - Recreation Room



Dimensions: 32'0" x 26'10"  
Area: 618 sq. ft  
Counted as living area: No

Heated: Yes  
Finished: Yes  
Enclosed: Yes  
Contiguous: No  
Permitted: Yes  
Wet space: No  
Addition: No  
Conversion: No

3 Floor 2 - Bath



Dimensions: 5'5" x 7'9"  
Area: 36 sq. ft  
Counted as living area: Yes

Heated: Yes  
Finished: Yes  
Enclosed: Yes  
Contiguous: Yes  
Permitted: Yes  
Wet space: Yes  
Addition: No  
Conversion: No

4 Floor 2 - WC



Dimensions: 2'11" x 3'7"  
Area: 10 sq. ft  
Counted as living area: Yes

Heated: Yes  
Finished: Yes  
Enclosed: Yes  
Contiguous: Yes  
Permitted: Yes  
Wet space: Yes  
Addition: No  
Conversion: No

5 Floor 2 - Bedroom

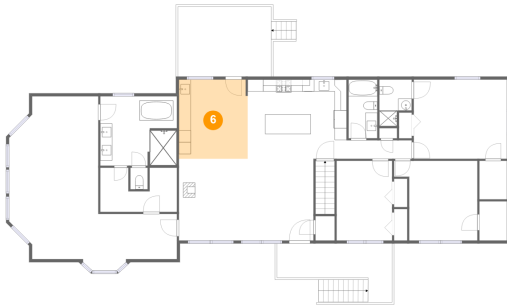


Dimensions: 9'3" x 13'3"  
Area: 123 sq. ft  
Counted as living area: Yes

Heated: Yes  
Finished: Yes  
Enclosed: Yes  
Contiguous: Yes  
Permitted: Yes  
Wet space: No  
Addition: No  
Conversion: No

10610 Slings Gap Road, Bent Mountain, Roanoke County,  
Virginia, United States, 24059

## 6 Floor 2 - Dining Area



Dimensions: 11'6" x 13'3"  
Area: 151 sq. ft  
Counted as living area: Yes

Heated: Yes  
Finished: Yes  
Enclosed: Yes  
Contiguous: Yes  
Permitted: Yes  
Wet space: No  
Addition: No  
Conversion: No

## 7 Floor 2 - Bath



Dimensions: 4'10" x 9'10"  
Area: 47 sq. ft  
Counted as living area: Yes

Heated: Yes  
Finished: Yes  
Enclosed: Yes  
Contiguous: Yes  
Permitted: Yes  
Wet space: Yes  
Addition: No  
Conversion: No

## 8 Floor 2 - W.I.C.

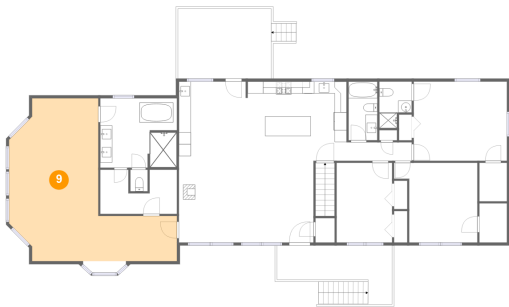


Dimensions: 12'9" x 7'5"  
Area: 80 sq. ft  
Counted as living area: Yes

Heated: Yes  
Finished: Yes  
Enclosed: Yes  
Contiguous: Yes  
Permitted: Yes  
Wet space: No  
Addition: No  
Conversion: No

10610 Slings Gap Road, Bent Mountain, Roanoke County,  
Virginia, United States, 24059

9 Floor 2 - Primary Bedroom



Dimensions: 28'0" x 27'2"  
Area: 468 sq. ft  
Counted as living area: Yes

Heated: Yes  
Finished: Yes  
Enclosed: Yes  
Contiguous: Yes  
Permitted: Yes  
Wet space: No  
Addition: No  
Conversion: No

10 Floor 2 - Deck



Dimensions: 15'7" x 11'8"  
Area: 194 sq. ft  
Counted as living area: No

Heated: No  
Finished: Yes  
Enclosed: No  
Contiguous: Yes  
Permitted: Yes  
Wet space: No  
Addition: No  
Conversion: No

11 Floor 2 - W.I.C.



Dimensions: 4'7" x 6'6"  
Area: 30 sq. ft  
Counted as living area: Yes

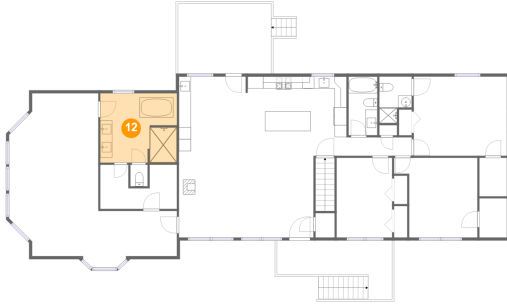
Heated: Yes  
Finished: Yes  
Enclosed: Yes  
Contiguous: Yes  
Permitted: Yes  
Wet space: No  
Addition: No  
Conversion: No



## Home report

10610 Slings Gap Road, Bent Mountain, Roanoke County,  
Virginia, United States, 24059

### 12 Floor 2 - Primary Bath



Dimensions: 12'9" x 11'7"  
Area: 146 sq. ft  
Counted as living area: Yes

Heated: Yes  
Finished: Yes  
Enclosed: Yes  
Contiguous: Yes  
Permitted: Yes  
Wet space: Yes  
Addition: No  
Conversion: No

### 13 Floor 2 - Bedroom



Dimensions: 15'7" x 13'3"  
Area: 206 sq. ft  
Counted as living area: Yes

Heated: Yes  
Finished: Yes  
Enclosed: Yes  
Contiguous: Yes  
Permitted: Yes  
Wet space: No  
Addition: No  
Conversion: No

### 14 Floor 2 - Porch



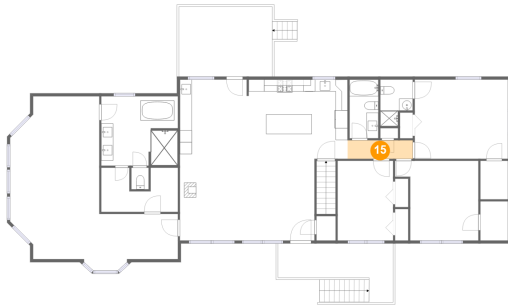
Dimensions: 19'3" x 9'10"  
Area: 157 sq. ft  
Counted as living area: No

Heated: No  
Finished: Yes  
Enclosed: No  
Contiguous: Yes  
Permitted: Yes  
Wet space: No  
Addition: No  
Conversion: No

## Home report

10610 Slings Gap Road, Bent Mountain, Roanoke County,  
Virginia, United States, 24059

### 15 Floor 2 - Hall



Dimensions: 10'10" x 3'1"  
Area: 33 sq. ft  
Counted as living area: Yes

Heated: Yes  
Finished: Yes  
Enclosed: Yes  
Contiguous: Yes  
Permitted: Yes  
Wet space: No  
Addition: No  
Conversion: No

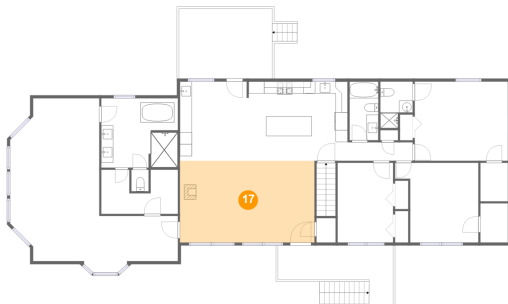
### 16 Floor 2 - W.I.C.



Dimensions: 4'7" x 6'5"  
Area: 30 sq. ft  
Counted as living area: Yes

Heated: Yes  
Finished: Yes  
Enclosed: Yes  
Contiguous: Yes  
Permitted: Yes  
Wet space: No  
Addition: No  
Conversion: No

### 17 Floor 2 - Living Room

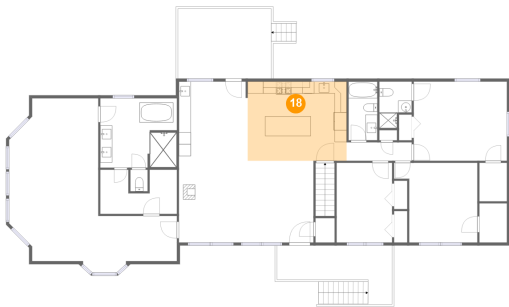


Dimensions: 22'5" x 13'7"  
Area: 306 sq. ft  
Counted as living area: Yes

Heated: Yes  
Finished: Yes  
Enclosed: Yes  
Contiguous: Yes  
Permitted: Yes  
Wet space: No  
Addition: No  
Conversion: No

10610 Slings Gap Road, Bent Mountain, Roanoke County,  
Virginia, United States, 24059

18 Floor 2 - Kitchen



Dimensions: 16'6" x 13'3"  
Area: 218 sq. ft  
Counted as living area: Yes

Heated: Yes  
Finished: Yes  
Enclosed: Yes  
Contiguous: Yes  
Permitted: Yes  
Wet space: No  
Addition: No  
Conversion: No

19 Floor 2 - Bedroom



Dimensions: 13'11" x 13'3"  
Area: 158 sq. ft  
Counted as living area: Yes

Heated: Yes  
Finished: Yes  
Enclosed: Yes  
Contiguous: Yes  
Permitted: Yes  
Wet space: No  
Addition: No  
Conversion: No