

Home report

1124 Pedigo Lane, Montgomery Village, Vinton, Roanoke
County, Virginia, United States, 24179



Total Area: 1938 sq. ft
Below Ground: 753 sq. ft, Floor 2: 1185 sq. ft
Excluded: Utility 368 sq. ft, Outdoor Patio 306 sq. ft, Outdoor Porch 67 sq. ft, Outdoor Deck 150 sq. ft

Property summary

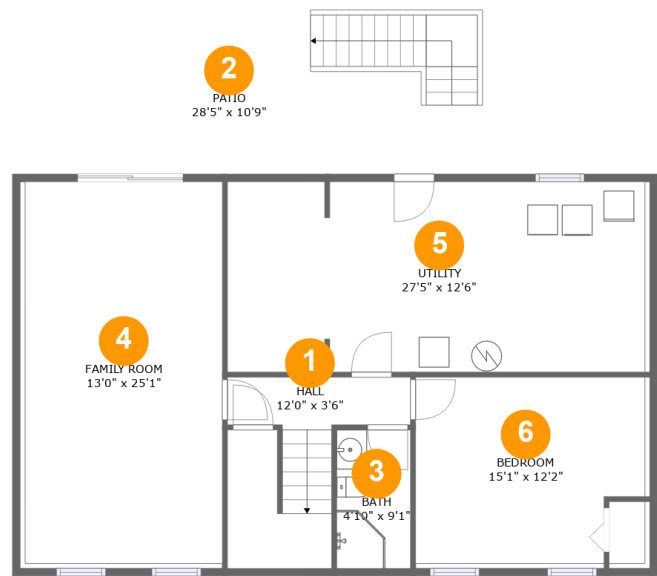
 **2** Floors

 **4** Bedrooms

 **2** Bathrooms

Home report

1124 Pedigo Lane, Montgomery Village, Vinton, Roanoke
County, Virginia, United States, 24179



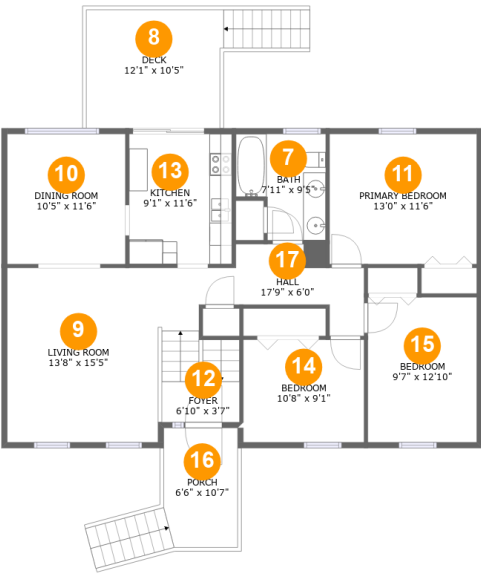
Room dimensions

Floor 1 Below ground Total:753sqft Excluded: 674sqft

#		Max Dimensions	sqft	Included
1	Hall	12'0" x 3'6"	99 sq. ft	Yes
2	Patio	28'5" x 10'9"	306 sq. ft	No
3	Bath	4'10" x 9'1"	44 sq. ft	Yes
4	Family Room	13'0" x 25'1"	338 sq. ft	Yes
5	Utility	27'5" x 12'6"	346 sq. ft	No
6	Bedroom	15'1" x 12'2"	180 sq. ft	Yes

Home report

1124 Pedigo Lane, Montgomery Village, Vinton, Roanoke
County, Virginia, United States, 24179



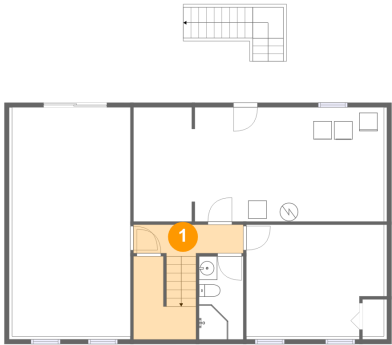
Room dimensions

Floor 2 Total:1185sqft Excluded: 217sqft

#		Max Dimensions	sqft	Included
7	Bath	7'11" x 9'5"	64 sq. ft	Yes
8	Deck	12'1" x 10'5"	150 sq. ft	No
9	Living Room	13'8" x 15'5"	209 sq. ft	Yes
10	Dining Room	10'5" x 11'6"	120 sq. ft	Yes
11	Primary Bedroom	13'0" x 11'6"	149 sq. ft	Yes
12	Foyer	6'10" x 3'7"	25 sq. ft	Yes
13	Kitchen	9'1" x 11'6"	104 sq. ft	Yes
14	Bedroom	10'8" x 9'1"	96 sq. ft	Yes
15	Bedroom	9'7" x 12'10"	123 sq. ft	Yes
16	Porch	6'6" x 10'7"	67 sq. ft	No
17	Hall	17'9" x 6'0"	114 sq. ft	Yes

1124 Pedigo Lane, Montgomery Village, Vinton, Roanoke
County, Virginia, United States, 24179

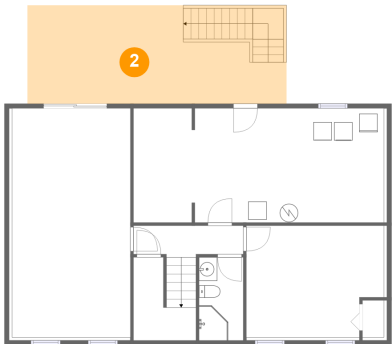
1 Floor 1 - Hall



Max Dimensions: 12'0" x 3'6"
Calculated Area: 99 sq. ft
Included: Yes

Heated: Yes
Finished: Yes
Enclosed: Yes
Contiguous: Yes
Permitted: Yes
Wet space: No
Addition: No
Conversion: No

2 Floor 1 - Patio



Max Dimensions: 28'5" x 10'9"
Calculated Area: 306 sq. ft
Included: No

Heated: No
Finished: Yes
Enclosed: No
Contiguous: Yes
Permitted: Yes
Wet space: No
Addition: No
Conversion: No

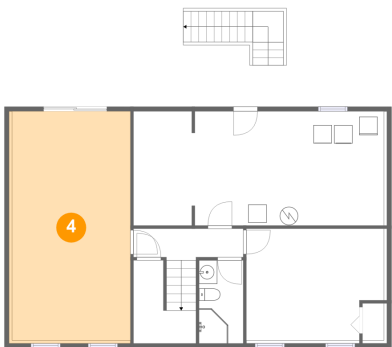
3 Floor 1 - Bath



Max Dimensions: 4'10" x 9'1"
Calculated Area: 44 sq. ft
Included: Yes

Heated: Yes
Finished: Yes
Enclosed: Yes
Contiguous: Yes
Permitted: Yes
Wet space: Yes
Addition: No
Conversion: No

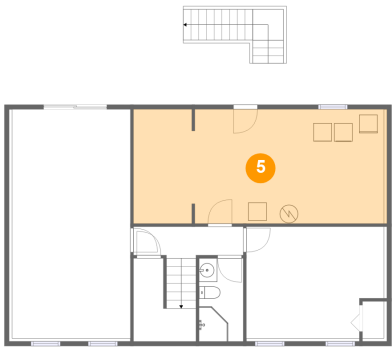
4 Floor 1 - Family Room



Max Dimensions: 13'0" x 25'1"
Calculated Area: 338 sq. ft
Included: Yes

Heated: Yes
Finished: Yes
Enclosed: Yes
Contiguous: Yes
Permitted: Yes
Wet space: No
Addition: No
Conversion: No

5 Floor 1 - Utility

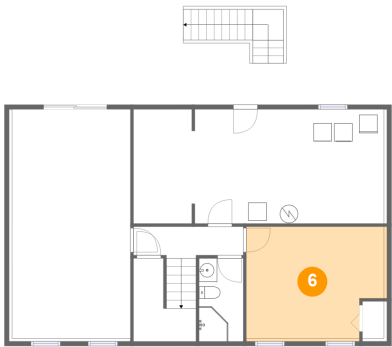


Max Dimensions: 27'5" x 12'6"
Calculated Area: 346 sq. ft
Included: No

Heated: Yes
Finished: No
Enclosed: Yes
Contiguous: Yes
Permitted: Yes
Wet space: No
Addition: No
Conversion: No

1124 Pedigo Lane, Montgomery Village, Vinton, Roanoke
County, Virginia, United States, 24179

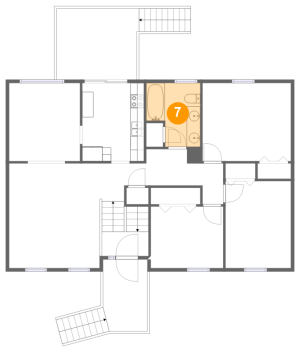
6 Floor 1 - Bedroom



Max Dimensions: 15'1" x 12'2"
Calculated Area: 180 sq. ft
Included: Yes

Heated: Yes
Finished: Yes
Enclosed: Yes
Contiguous: Yes
Permitted: Yes
Wet space: No
Addition: No
Conversion: No

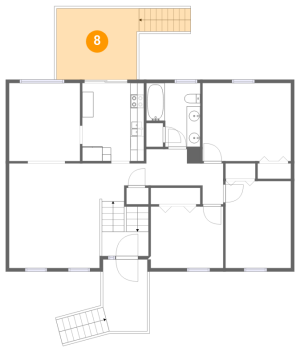
7 Floor 2 - Bath



Max Dimensions: 7'11" x 9'5"
Calculated Area: 64 sq. ft
Included: Yes

Heated: Yes
Finished: Yes
Enclosed: Yes
Contiguous: Yes
Permitted: Yes
Wet space: Yes
Addition: No
Conversion: No

8 Floor 2 - Deck

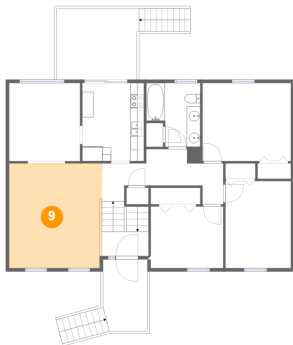


Max Dimensions: 12'1" x 10'5"
Calculated Area: 150 sq. ft
Included: No

Heated: No
Finished: Yes
Enclosed: No
Contiguous: Yes
Permitted: Yes
Wet space: No
Addition: No
Conversion: No

1124 Pedigo Lane, Montgomery Village, Vinton, Roanoke
County, Virginia, United States, 24179

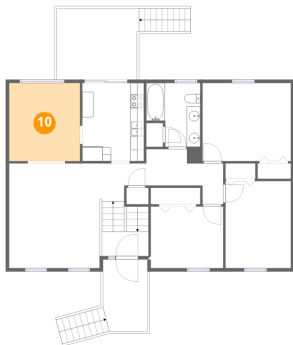
9 Floor 2 - Living Room



Max Dimensions: 13'8" x 15'5"
Calculated Area: 209 sq. ft
Included: Yes

Heated: Yes
Finished: Yes
Enclosed: Yes
Contiguous: Yes
Permitted: Yes
Wet space: No
Addition: No
Conversion: No

10 Floor 2 - Dining Room



Max Dimensions: 10'5" x 11'6"
Calculated Area: 120 sq. ft
Included: Yes

Heated: Yes
Finished: Yes
Enclosed: Yes
Contiguous: Yes
Permitted: Yes
Wet space: No
Addition: No
Conversion: No

11 Floor 2 - Primary Bedroom

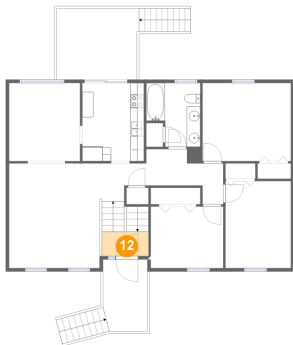


Max Dimensions: 13'0" x 11'6"
Calculated Area: 149 sq. ft
Included: Yes

Heated: Yes
Finished: Yes
Enclosed: Yes
Contiguous: Yes
Permitted: Yes
Wet space: No
Addition: No
Conversion: No

1124 Pedigo Lane, Montgomery Village, Vinton, Roanoke
County, Virginia, United States, 24179

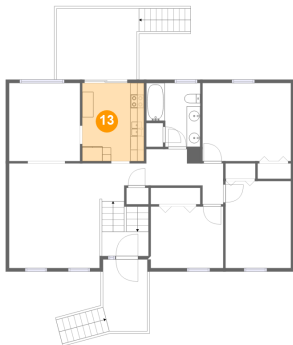
12 Floor 2 - Foyer



Max Dimensions: 6'10" x 3'7"
Calculated Area: 25 sq. ft
Included: Yes

Heated: Yes
Finished: Yes
Enclosed: Yes
Contiguous: Yes
Permitted: Yes
Wet space: No
Addition: No
Conversion: No

13 Floor 2 - Kitchen



Max Dimensions: 9'1" x 11'6"
Calculated Area: 104 sq. ft
Included: Yes

Heated: Yes
Finished: Yes
Enclosed: Yes
Contiguous: Yes
Permitted: Yes
Wet space: No
Addition: No
Conversion: No

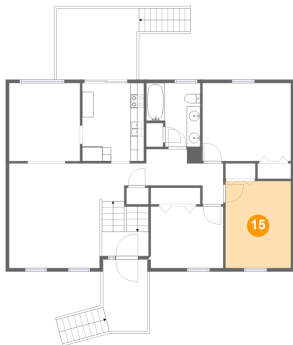
14 Floor 2 - Bedroom



Max Dimensions: 10'8" x 9'1"
Calculated Area: 96 sq. ft
Included: Yes

Heated: Yes
Finished: Yes
Enclosed: Yes
Contiguous: Yes
Permitted: Yes
Wet space: No
Addition: No
Conversion: No

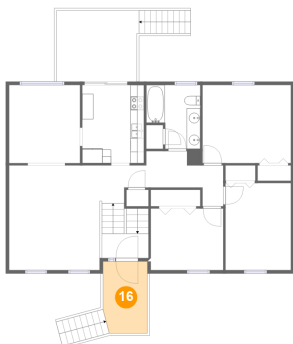
15 Floor 2 - Bedroom



Max Dimensions: 9'7" x 12'10"
Calculated Area: 123 sq. ft
Included: Yes

Heated: Yes
Finished: Yes
Enclosed: Yes
Contiguous: Yes
Permitted: Yes
Wet space: No
Addition: No
Conversion: No

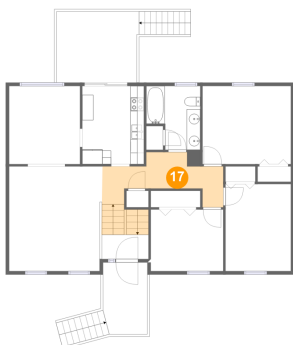
16 Floor 2 - Porch



Max Dimensions: 6'6" x 10'7"
Calculated Area: 67 sq. ft
Included: No

Heated: No
Finished: Yes
Enclosed: No
Contiguous: Yes
Permitted: Yes
Wet space: No
Addition: No
Conversion: No

17 Floor 2 - Hall



Max Dimensions: 17'9" x 6'0"
Calculated Area: 114 sq. ft
Included: Yes

Heated: Yes
Finished: Yes
Enclosed: Yes
Contiguous: Yes
Permitted: Yes
Wet space: No
Addition: No
Conversion: No