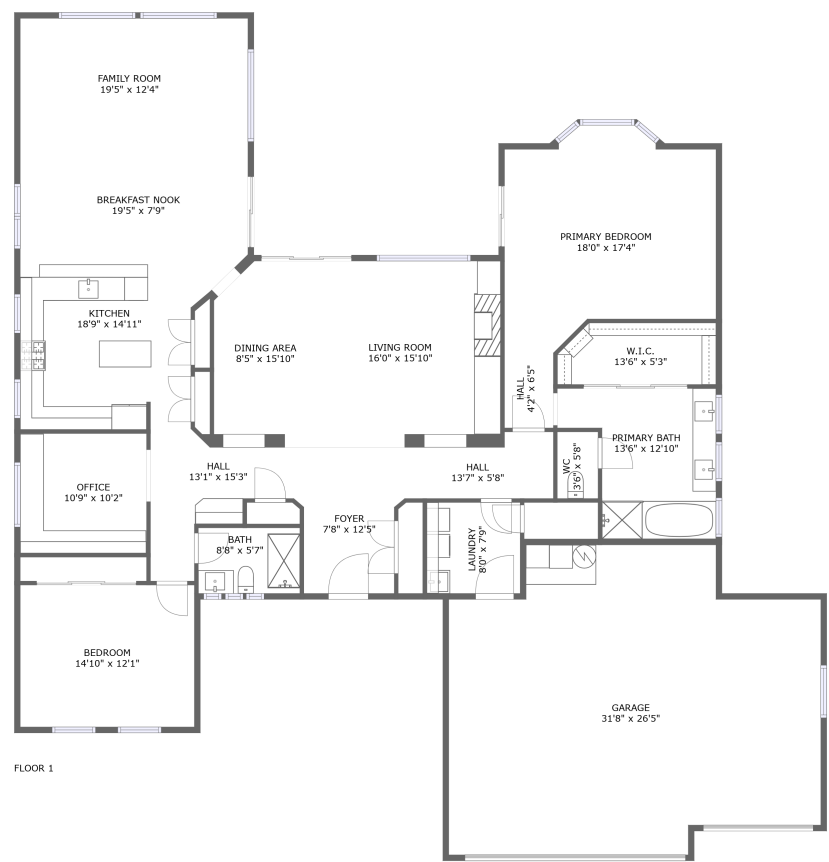




Home report


16158 W Copper Point Ln, Surprise, AZ, US




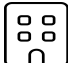
Property summary


 **1** Garages


 **2** Bedrooms

 **2** Bathrooms

 **0** Half baths

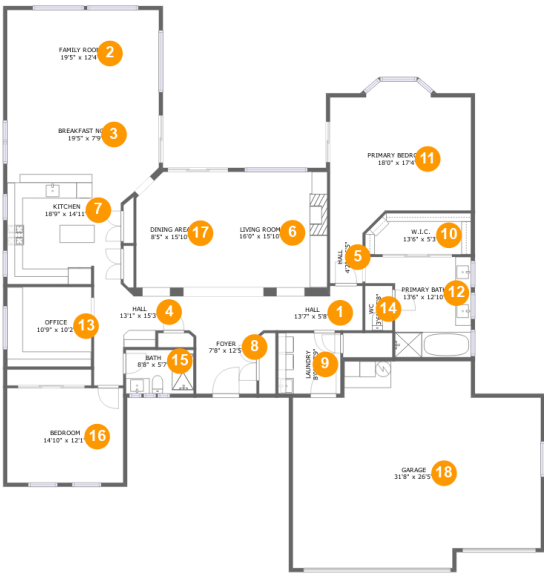
 **1** Floors

 **2,472** Gross living area sqft

 **3,268** Total sqft

Home report

16158 W Copper Point Ln, Surprise, AZ, US



Room dimensions

Floor 1 Total sqft: 3268 Living area: 2472

| # | | Dimensions | sqft | Counted as living area |
|----|-----------------|----------------|------------|------------------------|
| 1 | Hall | 13'7" x 5'8" | 65 sq. ft | Yes |
| 2 | Family Room | 19'5" x 12'4" | 240 sq. ft | Yes |
| 3 | Breakfast Nook | 19'5" x 7'9" | 150 sq. ft | Yes |
| 4 | Hall | 13'1" x 15'3" | 107 sq. ft | Yes |
| 5 | Hall | 4'2" x 6'5" | 27 sq. ft | Yes |
| 6 | Living Room | 16'0" x 15'10" | 250 sq. ft | Yes |
| 7 | Kitchen | 18'9" x 14'11" | 219 sq. ft | Yes |
| 8 | Foyer | 7'8" x 12'5" | 96 sq. ft | Yes |
| 9 | Laundry | 8'0" x 7'9" | 62 sq. ft | Yes |
| 10 | W.I.C. | 13'6" x 5'3" | 67 sq. ft | Yes |
| 11 | Primary Bedroom | 18'0" x 17'4" | 277 sq. ft | Yes |

Home report

16158 W Copper Point Ln, Surprise, AZ, US

| # | | Dimensions | sqft | Counted as living area |
|----|--------------|----------------|------------|------------------------|
| 12 | Primary Bath | 13'6" x 12'10" | 137 sq. ft | Yes |
| 13 | Office | 10'9" x 10'2" | 110 sq. ft | Yes |
| 14 | WC | 3'6" x 5'8" | 20 sq. ft | Yes |
| 15 | Bath | 8'8" x 5'7" | 48 sq. ft | Yes |
| 16 | Bedroom | 14'10" x 12'1" | 179 sq. ft | Yes |
| 17 | Dining Area | 8'5" x 15'10" | 127 sq. ft | Yes |
| 18 | Garage | 31'8" x 26'5" | 736 sq. ft | No |

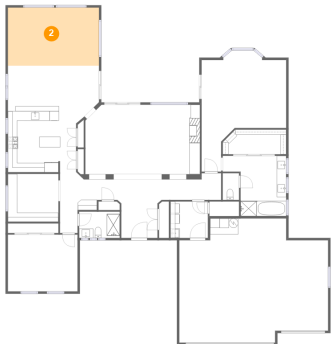
1 Floor 1 - Hall



Dimensions: 13'7" x 5'8"
Area: 65 sq. ft
Counted as living area: Yes

Heated: Yes
Finished: Yes
Enclosed: Yes
Contiguous: Yes
Permitted: Yes
Wet space: No
Addition: No
Conversion: No

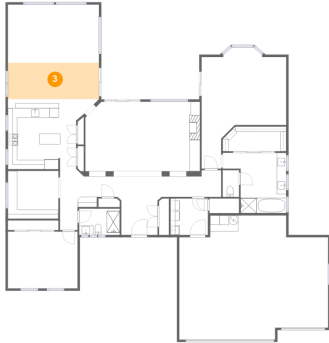
2 Floor 1 - Family Room



Dimensions: 19'5" x 12'4"
Area: 240 sq. ft
Counted as living area: Yes

Heated: Yes
Finished: Yes
Enclosed: Yes
Contiguous: Yes
Permitted: Yes
Wet space: No
Addition: No
Conversion: No

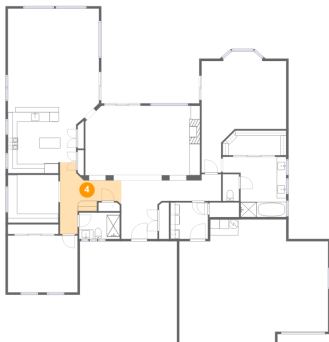
3 Floor 1 - Breakfast Nook



Dimensions: 19'5" x 7'9"
Area: 150 sq. ft
Counted as living area: Yes

Heated: Yes
Finished: Yes
Enclosed: Yes
Contiguous: Yes
Permitted: Yes
Wet space: No
Addition: No
Conversion: No

4 Floor 1 - Hall



Dimensions: 13'1" x 15'3"
Area: 107 sq. ft
Counted as living area: Yes

Heated: Yes
Finished: Yes
Enclosed: Yes
Contiguous: Yes
Permitted: Yes
Wet space: No
Addition: No
Conversion: No

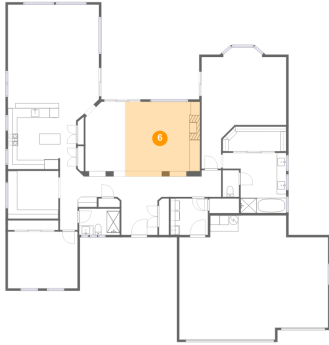
5 Floor 1 - Hall



Dimensions: 4'2" x 6'5"
Area: 27 sq. ft
Counted as living area: Yes

Heated: Yes
Finished: Yes
Enclosed: Yes
Contiguous: Yes
Permitted: Yes
Wet space: No
Addition: No
Conversion: No

6 Floor 1 - Living Room



Dimensions: 16'0" x 15'10"
Area: 250 sq. ft
Counted as living area: Yes

Heated: Yes
Finished: Yes
Enclosed: Yes
Contiguous: Yes
Permitted: Yes
Wet space: No
Addition: No
Conversion: No

7 Floor 1 - Kitchen



Dimensions: 18'9" x 14'11"
Area: 219 sq. ft
Counted as living area: Yes

Heated: Yes
Finished: Yes
Enclosed: Yes
Contiguous: Yes
Permitted: Yes
Wet space: No
Addition: No
Conversion: No

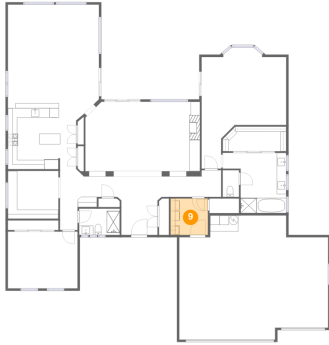
8 Floor 1 - Foyer



Dimensions: 7'8" x 12'5"
Area: 96 sq. ft
Counted as living area: Yes

Heated: Yes
Finished: Yes
Enclosed: Yes
Contiguous: Yes
Permitted: Yes
Wet space: No
Addition: No
Conversion: No

9 Floor 1 - Laundry



Dimensions: 8'0" x 7'9"
Area: 62 sq. ft
Counted as living area: Yes

Heated: Yes
Finished: Yes
Enclosed: Yes
Contiguous: Yes
Permitted: Yes
Wet space: No
Addition: No
Conversion: No

10 Floor 1 - W.I.C.



Dimensions: 13'6" x 5'3"
Area: 67 sq. ft
Counted as living area: Yes

Heated: Yes
Finished: Yes
Enclosed: Yes
Contiguous: Yes
Permitted: Yes
Wet space: No
Addition: No
Conversion: No

11 Floor 1 - Primary Bedroom



Dimensions: 18'0" x 17'4"
Area: 277 sq. ft
Counted as living area: Yes

Heated: Yes
Finished: Yes
Enclosed: Yes
Contiguous: Yes
Permitted: Yes
Wet space: No
Addition: No
Conversion: No

12 Floor 1 - Primary Bath



Dimensions: 13'6" x 12'10"
Area: 137 sq. ft
Counted as living area: Yes

Heated: Yes
Finished: Yes
Enclosed: Yes
Contiguous: Yes
Permitted: Yes
Wet space: Yes
Addition: No
Conversion: No

13 Floor 1 - Office



Dimensions: 10'9" x 10'2"
Area: 110 sq. ft
Counted as living area: Yes

Heated: Yes
Finished: Yes
Enclosed: Yes
Contiguous: Yes
Permitted: Yes
Wet space: No
Addition: No
Conversion: No

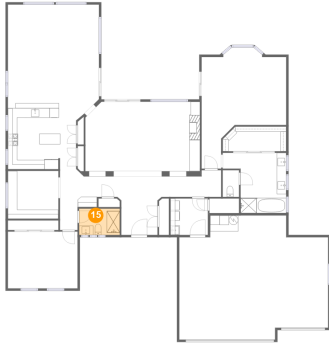
14 Floor 1 - WC



Dimensions: 3'6" x 5'8"
Area: 20 sq. ft
Counted as living area: Yes

Heated: Yes
Finished: Yes
Enclosed: Yes
Contiguous: Yes
Permitted: Yes
Wet space: Yes
Addition: No
Conversion: No

15 Floor 1 - Bath



Dimensions: 8'8" x 5'7"
Area: 48 sq. ft
Counted as living area: Yes

Heated: Yes
Finished: Yes
Enclosed: Yes
Contiguous: Yes
Permitted: Yes
Wet space: Yes
Addition: No
Conversion: No

16 Floor 1 - Bedroom



Dimensions: 14'10" x 12'1"
Area: 179 sq. ft
Counted as living area: Yes

Heated: Yes
Finished: Yes
Enclosed: Yes
Contiguous: Yes
Permitted: Yes
Wet space: No
Addition: No
Conversion: No

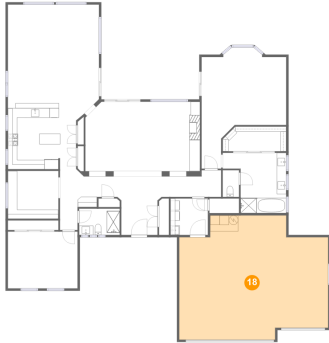
17 Floor 1 - Dining Area



Dimensions: 8'5" x 15'10"
Area: 127 sq. ft
Counted as living area: Yes

Heated: Yes
Finished: Yes
Enclosed: Yes
Contiguous: Yes
Permitted: Yes
Wet space: No
Addition: No
Conversion: No

18 Floor 1 - Garage



Dimensions: 31'8" x 26'5"
Area: 736 sq. ft
Counted as living area: No

Heated: No
Finished: No
Enclosed: Yes
Contiguous: Yes
Permitted: Yes
Wet space: No
Addition: No
Conversion: No