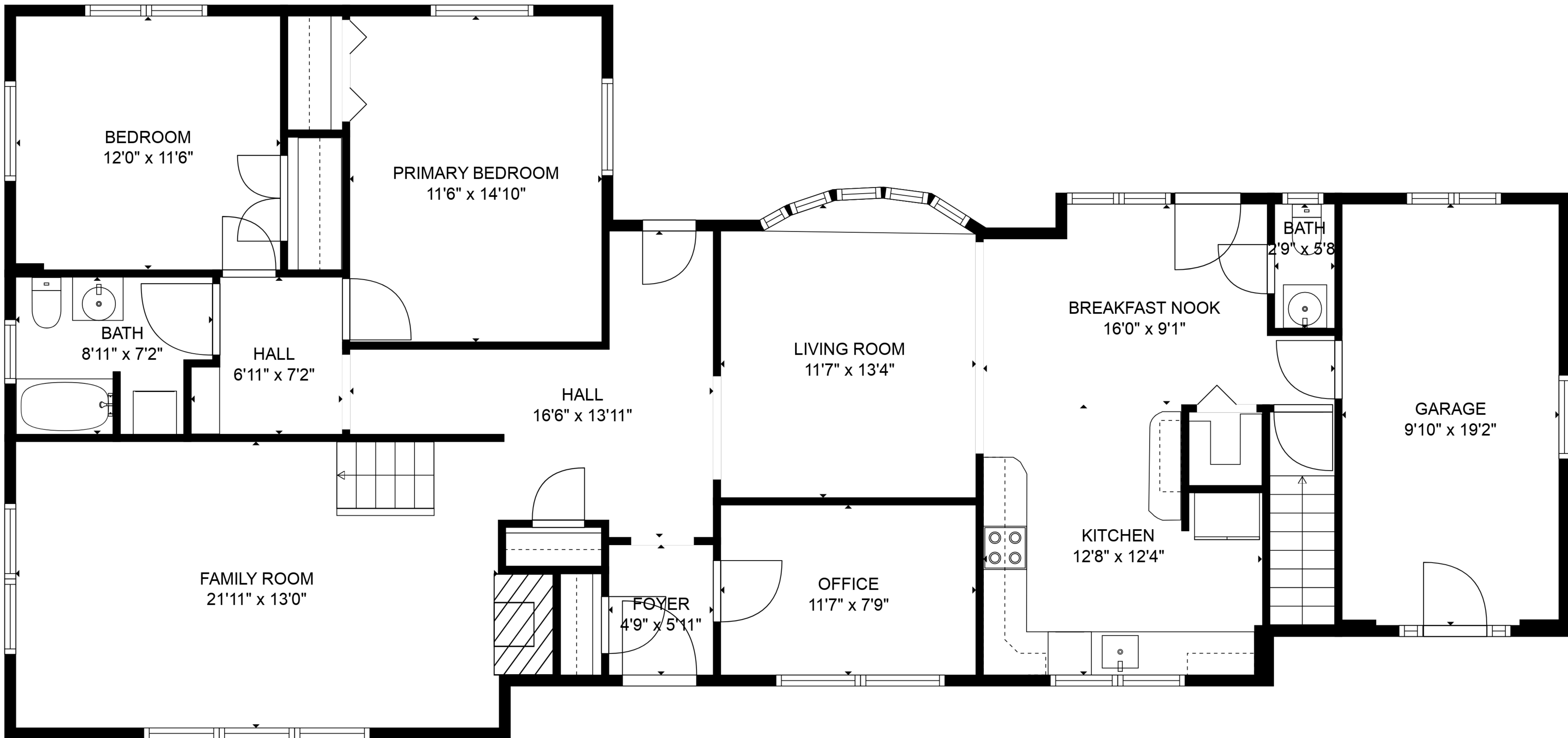


TOTAL: 3643 sq. ft

BELOW GROUND: 1533 sq. ft, FLOOR 2: 1547 sq. ft, FLOOR 3: 563 sq. ft
EXCLUDED AREAS: PATIO: 22 sq. ft, GARAGE: 189 sq. ft, LOW CEILING: 287 sq. ft,
WALLS: 260 sq. ft

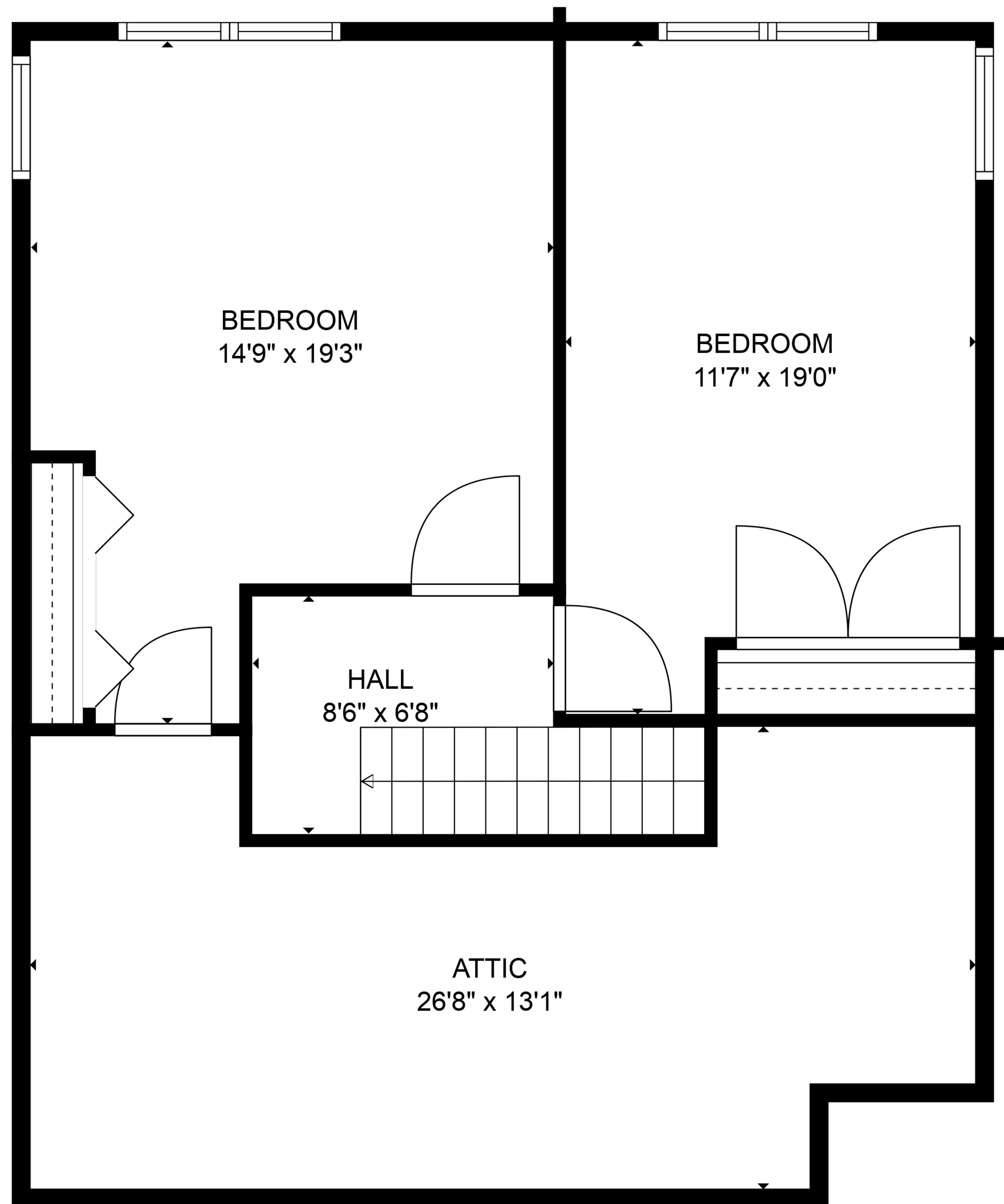


TOTAL: 3643 sq. ft

BELOW GROUND: 1533 sq. ft, FLOOR 2: 1547 sq. ft, FLOOR 3: 563 sq. ft
EXCLUDED AREAS: PATIO: 22 sq. ft, GARAGE: 189 sq. ft, LOW CEILING: 287 sq. ft,
WALLS: 260 sq. ft

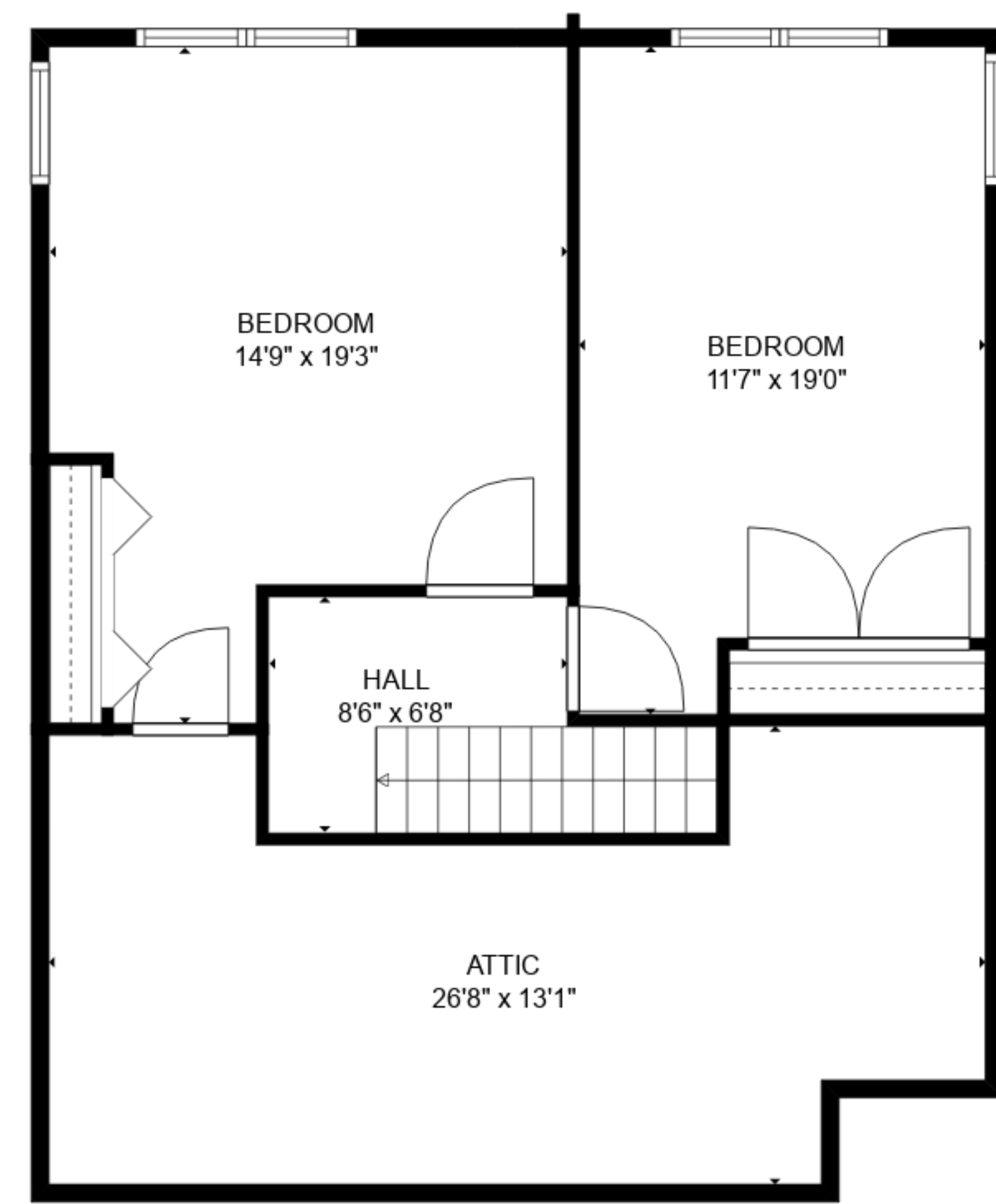


Floor Plans are provided by HouseSnappers.com. Measurements are deemed highly reliable but not guaranteed.

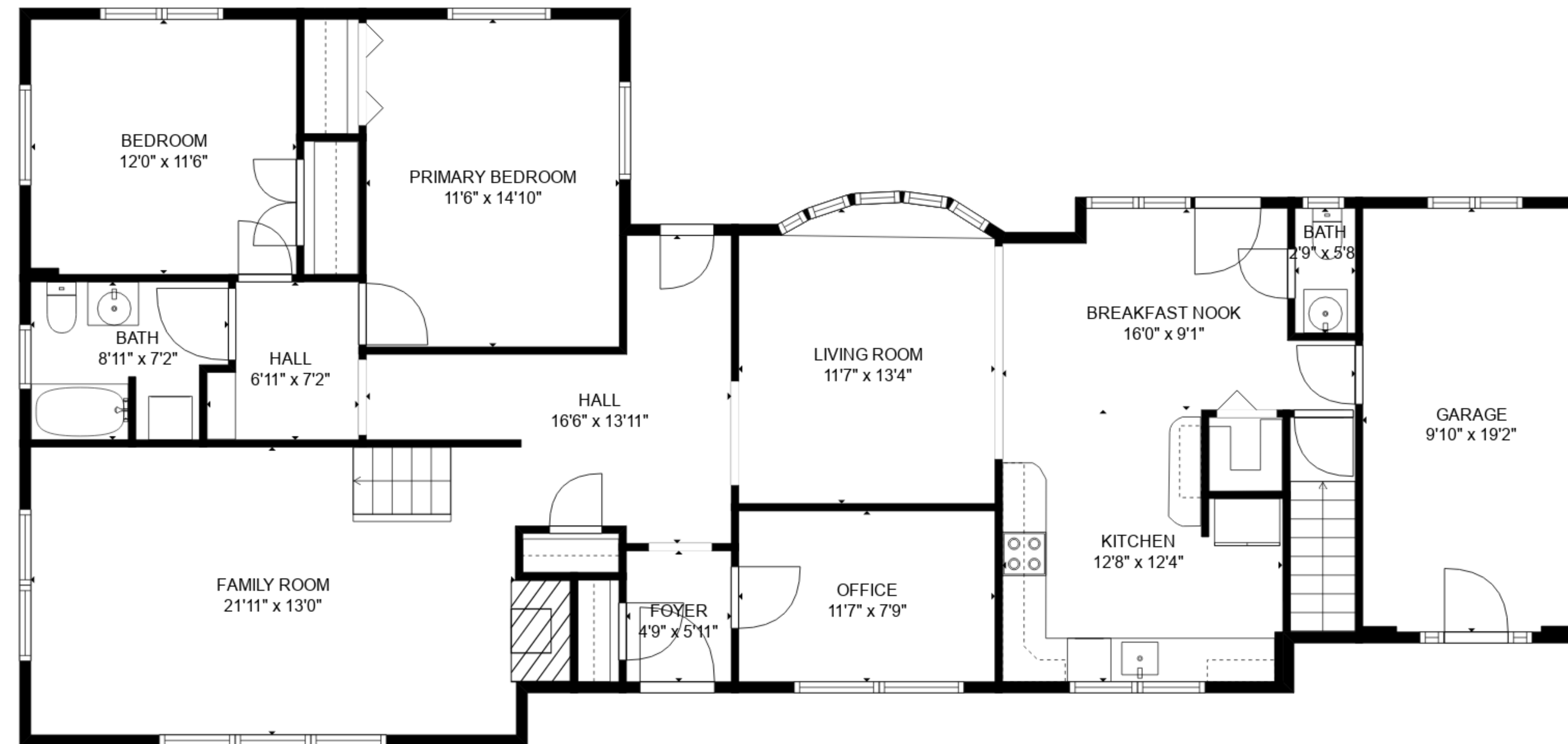


TOTAL: 3643 sq. ft

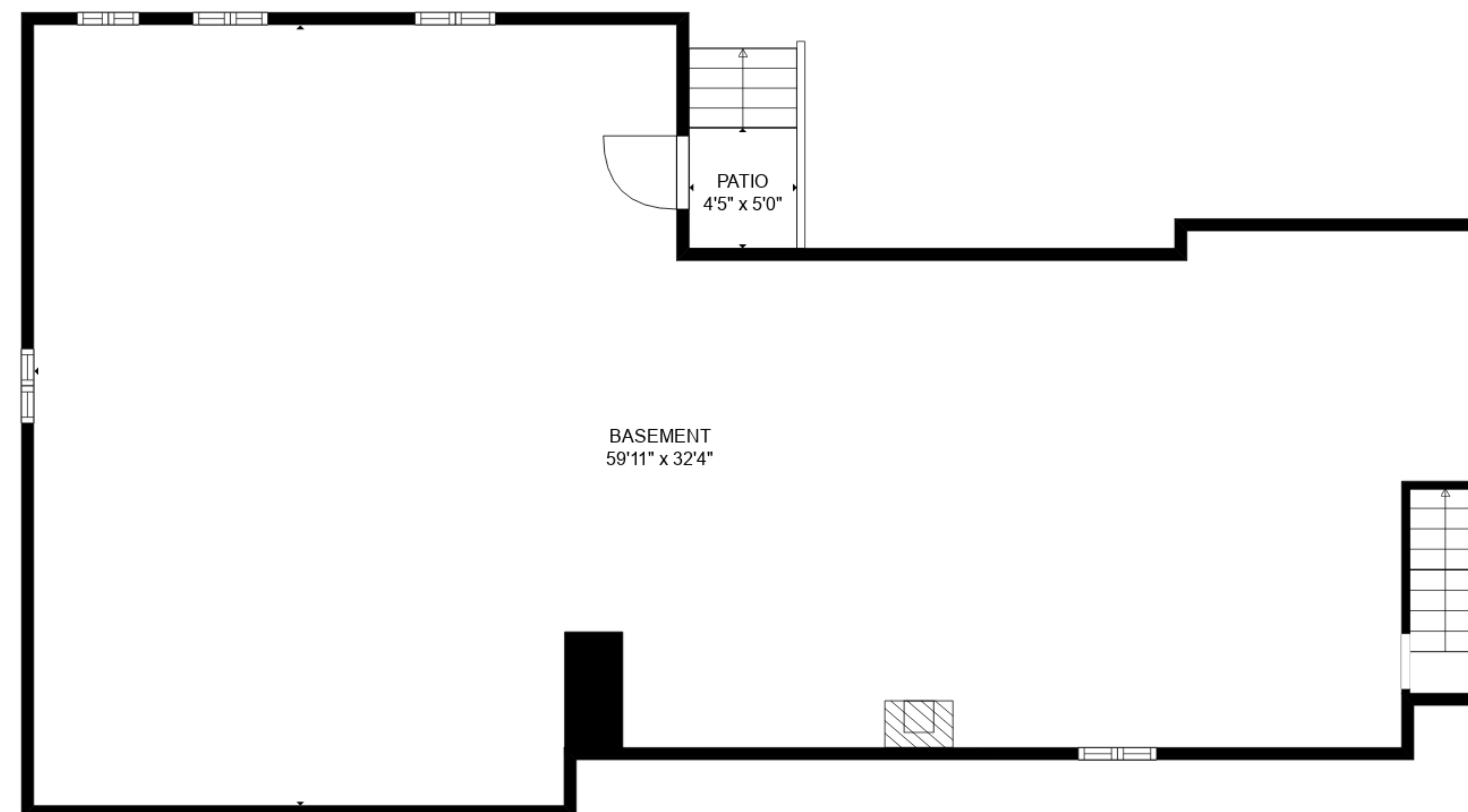
BELOW GROUND: 1533 sq. ft, FLOOR 2: 1547 sq. ft, FLOOR 3: 563 sq. ft
EXCLUDED AREAS: PATIO: 22 sq. ft, GARAGE: 189 sq. ft, LOW CEILING: 287 sq. ft,
WALLS: 260 sq. ft



FLOOR 3



FLOOR 2



FLOOR 1

TOTAL: 3643 sq. ft

BELOW GROUND: 1533 sq. ft, FLOOR 2: 1547 sq. ft, FLOOR 3: 563 sq. ft

EXCLUDED AREAS: PATIO: 22 sq. ft, GARAGE: 189 sq. ft, LOW CEILING: 287 sq. ft, WALLS: 260 sq. ft



Floor Plans are provided by HouseSnappers.com. Measurements are deemed highly reliable but not guaranteed.