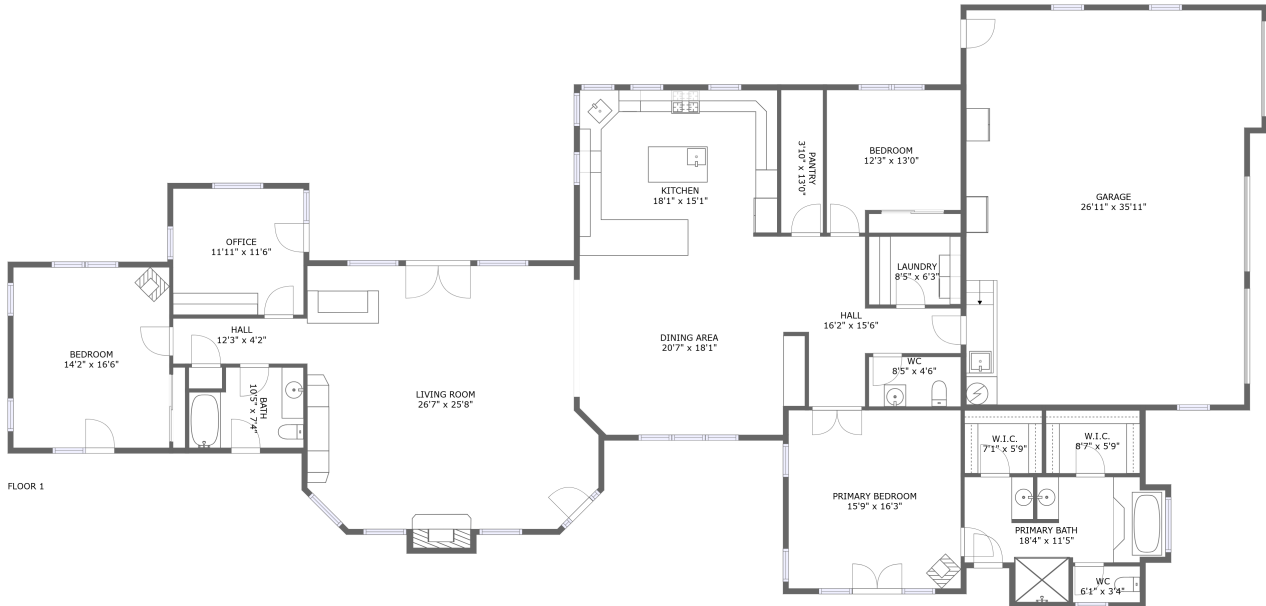


32939 Piney Woods, Shingletown, Shasta County, California, United States, 96088



Property Summary



1 floors



3 bedrooms



2 bathrooms



3,871 total sqft

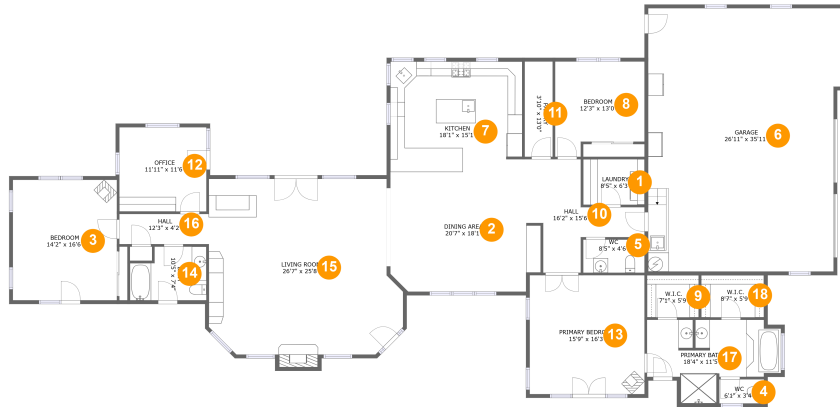


1 garages



2,889 Gross Living Area sqft

32939 Piney Woods, Shingletown, Shasta County, California, United States, 96088



Room Dimensions

Floor 1

Total sqft: 3871

Living area: 2889

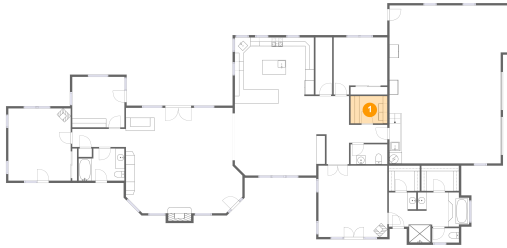
#	Room name	Dimensions	Area (sqft)	Counted as Living Area
1	Laundry	8'5" x 6'3"	52 sq. ft	Yes
2	Dining Area	20'7" x 18'1"	329 sq. ft	Yes
3	Bedroom	14'2" x 16'6"	234 sq. ft	Yes
4	Wc	6'1" x 3'4"	20 sq. ft	Yes
5	Wc	8'5" x 4'6"	38 sq. ft	Yes
6	Garage	26'11" x 35'11"	930 sq. ft	No
7	Kitchen	18'1" x 15'1"	257 sq. ft	Yes
8	Bedroom	12'3" x 13'0"	141 sq. ft	Yes
9	W.i.c.	7'1" x 5'9"	41 sq. ft	Yes
10	Hall	16'2" x 15'6"	136 sq. ft	Yes
11	Pantry	3'10" x 13'0"	50 sq. ft	Yes

**32939 Piney Woods, Shingletown, Shasta
County, California, United States, 96088**

#	Room name	Dimensions	Area (sqft)	Counted as Living Area
12	Office	11'11" x 11'6"	137 sq. ft	Yes
13	Primary Bedroom	15'9" x 16'3"	256 sq. ft	Yes
14	Bath	10'5" x 7'4"	69 sq. ft	Yes
15	Living Room	26'7" x 25'8"	601 sq. ft	Yes
16	Hall	12'3" x 4'2"	51 sq. ft	Yes
17	Primary Bath	18'4" x 11'5"	154 sq. ft	Yes
18	W.i.c.	8'7" x 5'9"	49 sq. ft	Yes

32939 Piney Woods, Shingletown, Shasta County, California, United States, 96088

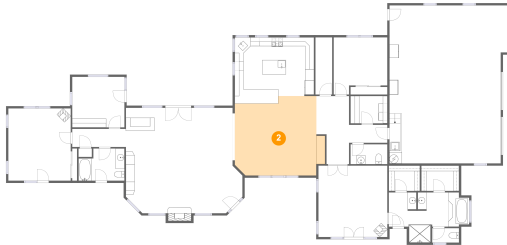
1 Floor 1 - Laundry



Dimensions: 8'5" x 6'3"
Area: 52 sq. ft
Counted as Living Area:
Yes

Heated: Yes
Finished: Yes
Enclosed: Yes
Contiguous:
Yes
Permitted: Yes
Wet Space: No
Addition: No
Conversion: No

2 Floor 1 - Dining Area

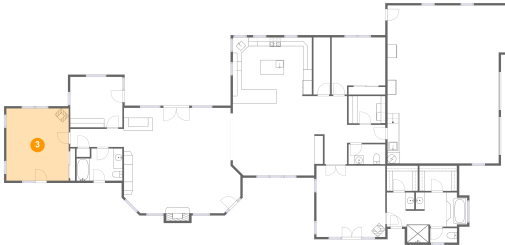


Dimensions: 20'7" x 18'1"
Area: 329 sq. ft
Counted as Living Area:
Yes

Heated: Yes
Finished: Yes
Enclosed: Yes
Contiguous:
Yes
Permitted: Yes
Wet Space: No
Addition: No
Conversion: No

32939 Piney Woods, Shingletown, Shasta County, California, United States, 96088

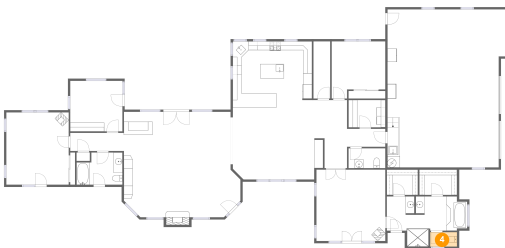
3 Floor 1 - Bedroom



Dimensions: 14'2" x 16'6"
Area: 234 sq. ft
Counted as Living Area:
Yes

Heated: Yes
Finished: Yes
Enclosed: Yes
Contiguous:
Yes
Permitted: Yes
Wet Space: No
Addition: No
Conversion: No

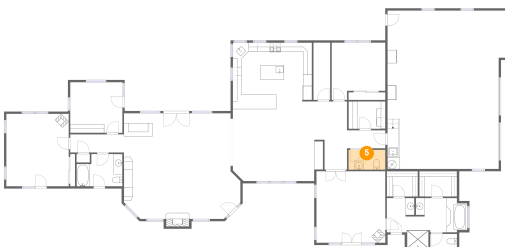
4 Floor 1 - Wc



Dimensions: 6'1" x 3'4"
Area: 20 sq. ft
Counted as Living Area:
Yes

Heated: Yes
Finished: Yes
Enclosed: Yes
Contiguous:
Yes
Permitted: Yes
Wet Space: Yes
Addition: No
Conversion: No

5 Floor 1 - Wc

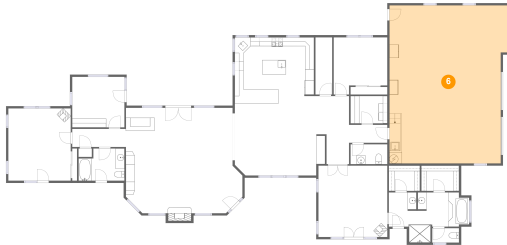


Dimensions: 8'5" x 4'6"
Area: 38 sq. ft
Counted as Living Area:
Yes

Heated: Yes
Finished: Yes
Enclosed: Yes
Contiguous:
Yes
Permitted: Yes
Wet Space: Yes
Addition: No
Conversion: No

32939 Piney Woods, Shingletown, Shasta County, California, United States, 96088

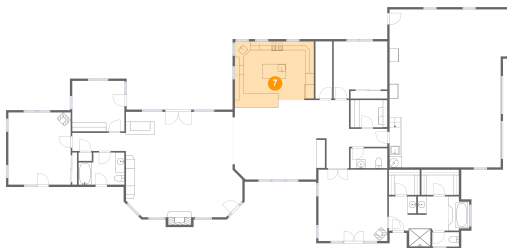
6 Floor 1 - Garage



Dimensions: 26'11" x 35'11"
Area: 930 sq. ft
Counted as Living Area: No

Heated: No
Finished: No
Enclosed: Yes
Contiguous: Yes
Permitted: Yes
Wet Space: No
Addition: No
Conversion: No

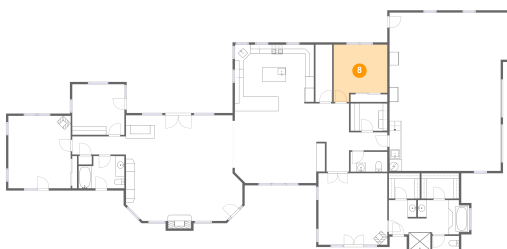
7 Floor 1 - Kitchen



Dimensions: 18'1" x 15'1"
Area: 257 sq. ft
Counted as Living Area: Yes

Heated: Yes
Finished: Yes
Enclosed: Yes
Contiguous: Yes
Permitted: Yes
Wet Space: No
Addition: No
Conversion: No

8 Floor 1 - Bedroom

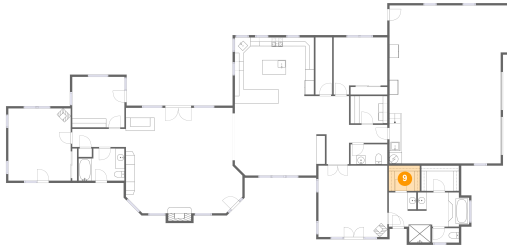


Dimensions: 12'3" x 13'0"
Area: 141 sq. ft
Counted as Living Area: Yes

Heated: Yes
Finished: Yes
Enclosed: Yes
Contiguous: Yes
Permitted: Yes
Wet Space: No
Addition: No
Conversion: No

32939 Piney Woods, Shingletown, Shasta County, California, United States, 96088

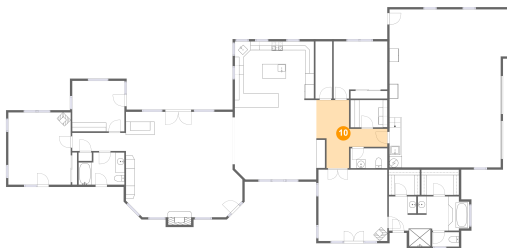
9 Floor 1 - W.i.c.



Dimensions: 7'1" x 5'9"
Area: 41 sq. ft
Counted as Living Area:
Yes

Heated: Yes
Finished: Yes
Enclosed: Yes
Contiguous:
Yes
Permitted: Yes
Wet Space: No
Addition: No
Conversion: No

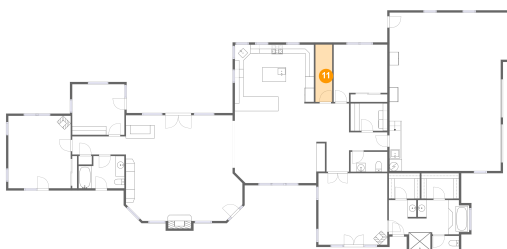
10 Floor 1 - Hall



Dimensions: 16'2" x 15'6"
Area: 136 sq. ft
Counted as Living Area:
Yes

Heated: Yes
Finished: Yes
Enclosed: Yes
Contiguous:
Yes
Permitted: Yes
Wet Space: No
Addition: No
Conversion: No

11 Floor 1 - Pantry

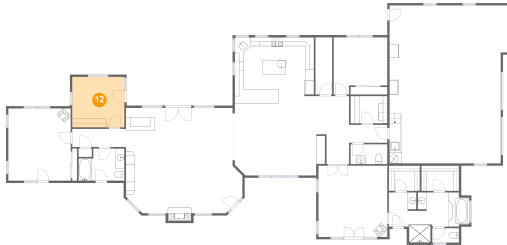


Dimensions: 3'10" x 13'0"
Area: 50 sq. ft
Counted as Living Area:
Yes

Heated: Yes
Finished: Yes
Enclosed: Yes
Contiguous:
Yes
Permitted: Yes
Wet Space: No
Addition: No
Conversion: No

32939 Piney Woods, Shingletown, Shasta County, California, United States, 96088

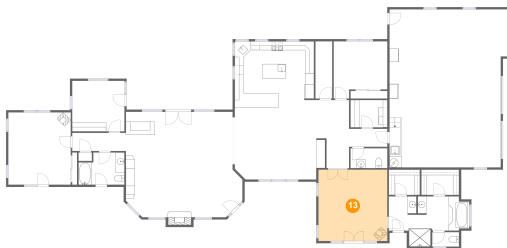
12 Floor 1 - Office



Dimensions: 11'11" x 11'6"
Area: 137 sq. ft
Counted as Living Area:
Yes

Heated: Yes
Finished: Yes
Enclosed: Yes
Contiguous:
Yes
Permitted: Yes
Wet Space: No
Addition: No
Conversion: No

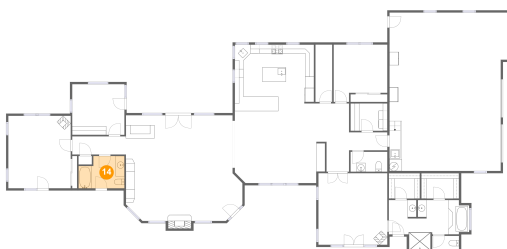
13 Floor 1 - Primary Bedroom



Dimensions: 15'9" x 16'3"
Area: 256 sq. ft
Counted as Living Area:
Yes

Heated: Yes
Finished: Yes
Enclosed: Yes
Contiguous:
Yes
Permitted: Yes
Wet Space: No
Addition: No
Conversion: No

14 Floor 1 - Bath

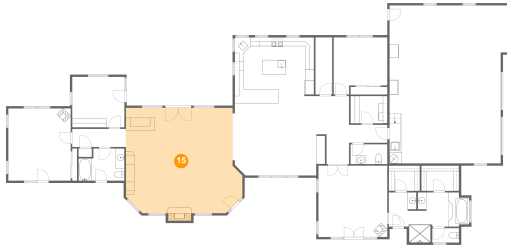


Dimensions: 10'5" x 7'4"
Area: 69 sq. ft
Counted as Living Area:
Yes

Heated: Yes
Finished: Yes
Enclosed: Yes
Contiguous:
Yes
Permitted: Yes
Wet Space: Yes
Addition: No
Conversion: No

32939 Piney Woods, Shingletown, Shasta County, California, United States, 96088

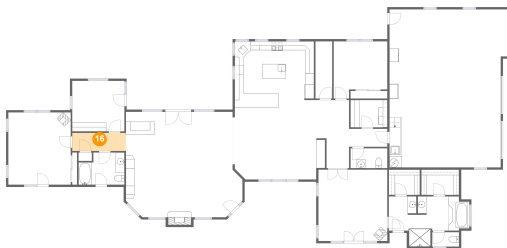
15 Floor 1 - Living Room



Dimensions: 26'7" x 25'8"
Area: 601 sq. ft
Counted as Living Area:
Yes

Heated: Yes
Finished: Yes
Enclosed: Yes
Contiguous:
Yes
Permitted: Yes
Wet Space: No
Addition: No
Conversion: No

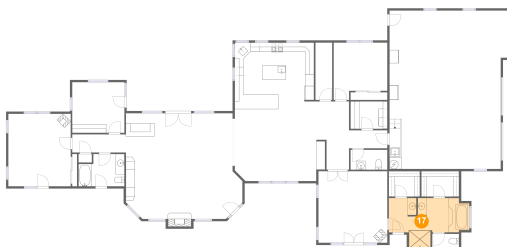
16 Floor 1 - Hall



Dimensions: 12'3" x 4'2"
Area: 51 sq. ft
Counted as Living Area:
Yes

Heated: Yes
Finished: Yes
Enclosed: Yes
Contiguous:
Yes
Permitted: Yes
Wet Space: No
Addition: No
Conversion: No

17 Floor 1 - Primary Bath

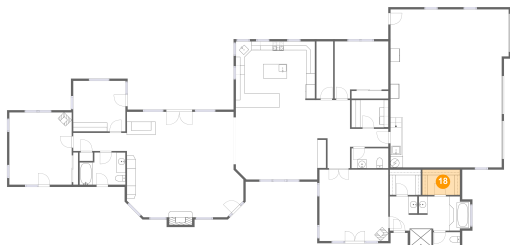


Dimensions: 18'4" x 11'5"
Area: 154 sq. ft
Counted as Living Area:
Yes

Heated: Yes
Finished: Yes
Enclosed: Yes
Contiguous:
Yes
Permitted: Yes
Wet Space: Yes
Addition: No
Conversion: No

32939 Piney Woods, Shingletown, Shasta County, California, United States, 96088

18 Floor 1 - W.i.c.



Dimensions: 8'7" x 5'9"
Area: 49 sq. ft
Counted as Living Area:
Yes

Heated: Yes
Finished: Yes
Enclosed: Yes
Contiguous:
Yes
Permitted: Yes
Wet Space: No
Addition: No
Conversion: No