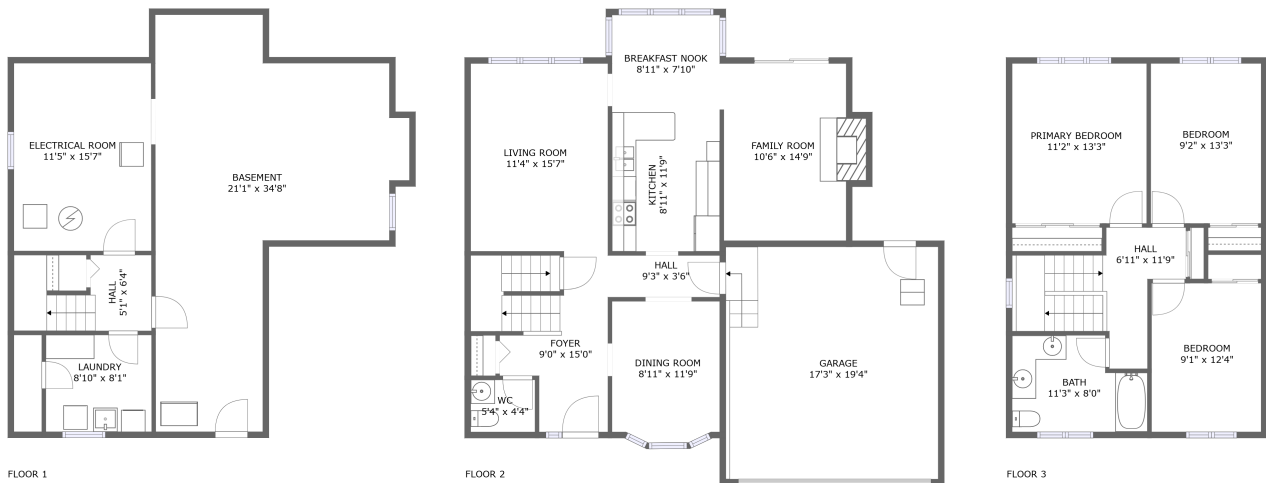




551 Crimson Ct, Oshawa, ON, CA



Property summary

 **1** Garages

 **3** Bedrooms

 **1** Bathrooms

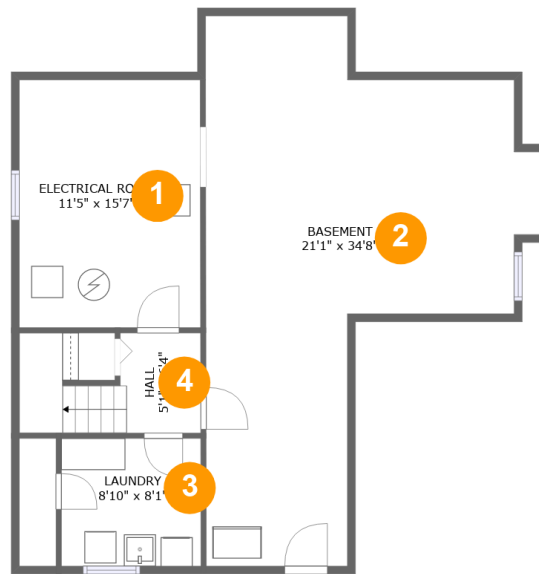
 **1** Half baths

 **3** Floors

 **1,762** Gross living area sqft

 **2,859** Total sqft

551 Crimson Ct, Oshawa, ON, CA

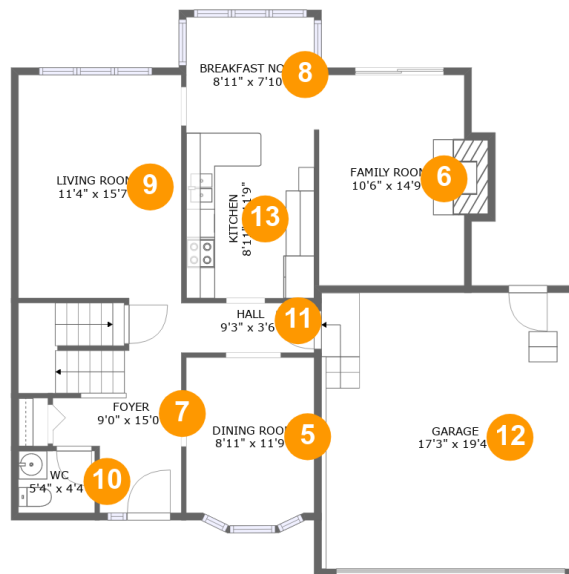


Room dimensions

Floor 1

Total sqft: 902 Living area: 180

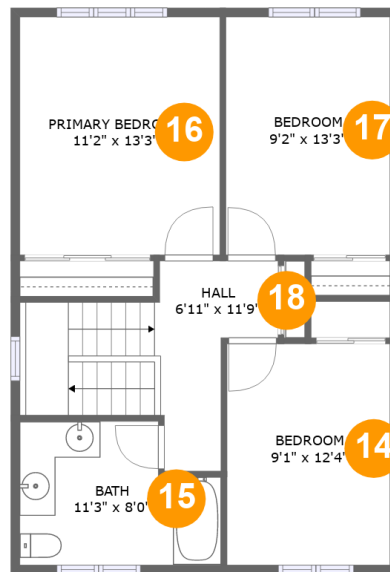
| # | | Dimensions | sqft | Counted as living area |
|---|-----------------|---------------|------------|------------------------|
| 1 | Electrical Room | 11'5" x 15'7" | 178 sq. ft | No |
| 2 | Basement | 21'1" x 34'8" | 473 sq. ft | No |
| 3 | Laundry | 8'10" x 8'1" | 71 sq. ft | Yes |
| 4 | Hall | 5'1" x 6'4" | 60 sq. ft | Yes |

551 Crimson Ct, Oshawa, ON, CA**Room dimensions**

Floor 2

Total sqft: 1271 Living area: 896

| # | | Dimensions | sqft | Counted as living area |
|----|----------------|---------------|------------|------------------------|
| 5 | Dining Room | 8'11" x 11'9" | 102 sq. ft | Yes |
| 6 | Family Room | 10'6" x 14'9" | 160 sq. ft | Yes |
| 7 | Foyer | 9'0" x 15'0" | 130 sq. ft | Yes |
| 8 | Breakfast Nook | 8'11" x 7'10" | 70 sq. ft | Yes |
| 9 | Living Room | 11'4" x 15'7" | 178 sq. ft | Yes |
| 10 | WC | 5'4" x 4'4" | 23 sq. ft | Yes |
| 11 | Hall | 9'3" x 3'6" | 32 sq. ft | Yes |
| 12 | Garage | 17'3" x 19'4" | 341 sq. ft | No |
| 13 | Kitchen | 8'11" x 11'9" | 105 sq. ft | Yes |

551 Crimson Ct, Oshawa, ON, CA**Room dimensions**

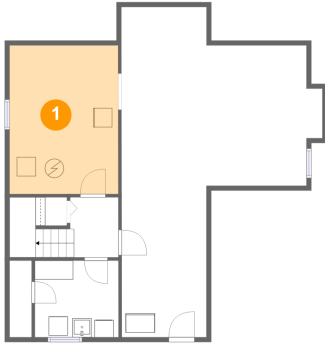
Floor 3

Total sqft: 686 Living area: 686

| # | | Dimensions | sqft | Counted as living area |
|----|-----------------|---------------|------------|------------------------|
| 14 | Bedroom | 9'1" x 12'4" | 113 sq. ft | Yes |
| 15 | Bath | 11'3" x 8'0" | 79 sq. ft | Yes |
| 16 | Primary Bedroom | 11'2" x 13'3" | 149 sq. ft | Yes |
| 17 | Bedroom | 9'2" x 13'3" | 122 sq. ft | Yes |
| 18 | Hall | 6'11" x 11'9" | 102 sq. ft | Yes |

551 Crimson Ct, Oshawa, ON, CA

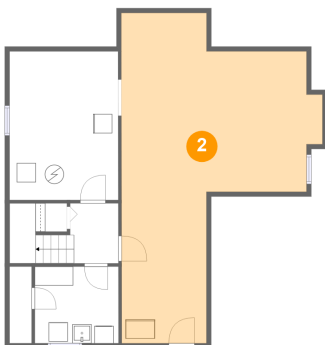
1 Floor 1 - Electrical Room



Dimensions: 11'5" x 15'7"
Area: 178 sq. ft
Counted as living area: No

Heated: No
Finished: No
Enclosed: Yes
Contiguous: Yes
Permitted: Yes
Wet space: No
Addition: No
Conversion: No

2 Floor 1 - Basement

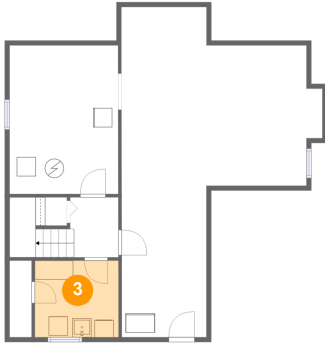


Dimensions: 21'1" x 34'8"
Area: 473 sq. ft
Counted as living area: No

Heated: No
Finished: No
Enclosed: Yes
Contiguous: Yes
Permitted: Yes
Wet space: No
Addition: No
Conversion: No

551 Crimson Ct, Oshawa, ON, CA

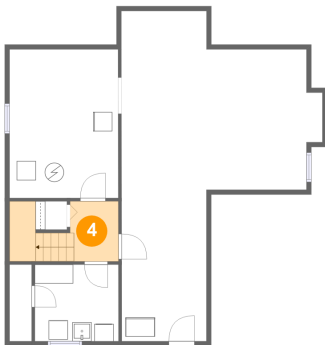
3 Floor 1 - Laundry



Dimensions: 8'10" x 8'1"
Area: 71 sq. ft
Counted as living area: Yes

Heated: Yes
Finished: Yes
Enclosed: Yes
Contiguous: Yes
Permitted: Yes
Wet space: No
Addition: No
Conversion: No

4 Floor 1 - Hall



Dimensions: 5'1" x 6'4"
Area: 60 sq. ft
Counted as living area: Yes

Heated: Yes
Finished: Yes
Enclosed: Yes
Contiguous: Yes
Permitted: Yes
Wet space: No
Addition: No
Conversion: No

5 Floor 2 - Dining Room



Dimensions: 8'11" x 11'9"
Area: 102 sq. ft
Counted as living area: Yes

Heated: Yes
Finished: Yes
Enclosed: Yes
Contiguous: Yes
Permitted: Yes
Wet space: No
Addition: No
Conversion: No

551 Crimson Ct, Oshawa, ON, CA

6 Floor 2 - Family Room



Dimensions: 10'6" x 14'9"
Area: 160 sq. ft
Counted as living area: Yes

Heated: Yes
Finished: Yes
Enclosed: Yes
Contiguous: Yes
Permitted: Yes
Wet space: No
Addition: No
Conversion: No

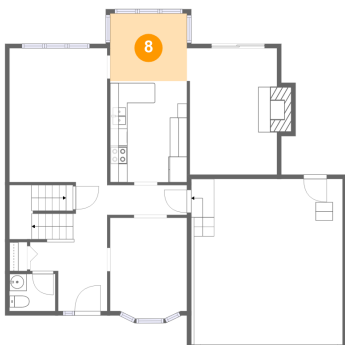
7 Floor 2 - Foyer



Dimensions: 9'0" x 15'0"
Area: 130 sq. ft
Counted as living area: Yes

Heated: Yes
Finished: Yes
Enclosed: Yes
Contiguous: Yes
Permitted: Yes
Wet space: No
Addition: No
Conversion: No

8 Floor 2 - Breakfast Nook

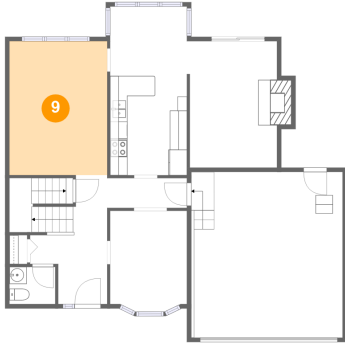


Dimensions: 8'11" x 7'10"
Area: 70 sq. ft
Counted as living area: Yes

Heated: Yes
Finished: Yes
Enclosed: Yes
Contiguous: Yes
Permitted: Yes
Wet space: No
Addition: No
Conversion: No

551 Crimson Ct, Oshawa, ON, CA

9 Floor 2 - Living Room



Dimensions: 11'4" x 15'7"
Area: 178 sq. ft
Counted as living area: Yes

Heated: Yes
Finished: Yes
Enclosed: Yes
Contiguous: Yes
Permitted: Yes
Wet space: No
Addition: No
Conversion: No

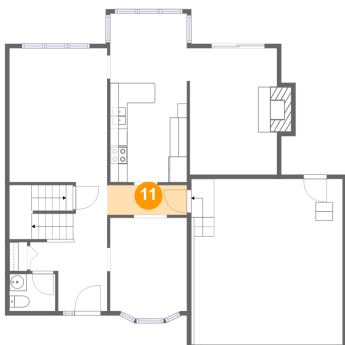
10 Floor 2 - WC



Dimensions: 5'4" x 4'4"
Area: 23 sq. ft
Counted as living area: Yes

Heated: Yes
Finished: Yes
Enclosed: Yes
Contiguous: Yes
Permitted: Yes
Wet space: Yes
Addition: No
Conversion: No

11 Floor 2 - Hall



Dimensions: 9'3" x 3'6"
Area: 32 sq. ft
Counted as living area: Yes

Heated: Yes
Finished: Yes
Enclosed: Yes
Contiguous: Yes
Permitted: Yes
Wet space: No
Addition: No
Conversion: No

551 Crimson Ct, Oshawa, ON, CA

12 Floor 2 - Garage



Dimensions: 17'3" x 19'4"
Area: 341 sq. ft
Counted as living area: No

Heated: No
Finished: No
Enclosed: Yes
Contiguous: Yes
Permitted: Yes
Wet space: No
Addition: No
Conversion: No

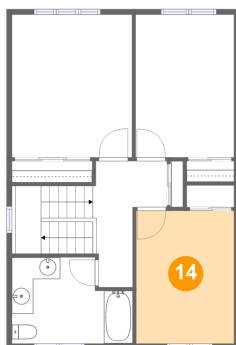
13 Floor 2 - Kitchen



Dimensions: 8'11" x 11'9"
Area: 105 sq. ft
Counted as living area: Yes

Heated: Yes
Finished: Yes
Enclosed: Yes
Contiguous: Yes
Permitted: Yes
Wet space: No
Addition: No
Conversion: No

14 Floor 3 - Bedroom

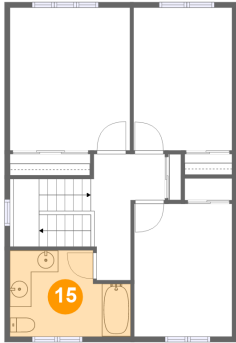


Dimensions: 9'1" x 12'4"
Area: 113 sq. ft
Counted as living area: Yes

Heated: Yes
Finished: Yes
Enclosed: Yes
Contiguous: Yes
Permitted: Yes
Wet space: No
Addition: No
Conversion: No

551 Crimson Ct, Oshawa, ON, CA

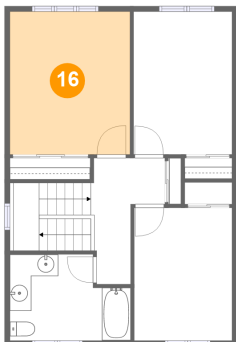
15 Floor 3 - Bath



Dimensions: 11'3" x 8'0"
Area: 79 sq. ft
Counted as living area: Yes

Heated: Yes
Finished: Yes
Enclosed: Yes
Contiguous: Yes
Permitted: Yes
Wet space: Yes
Addition: No
Conversion: No

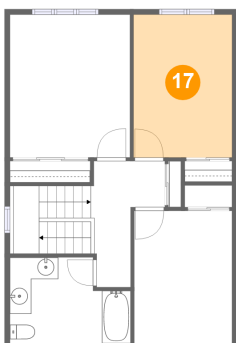
16 Floor 3 - Primary Bedroom



Dimensions: 11'2" x 13'3"
Area: 149 sq. ft
Counted as living area: Yes

Heated: Yes
Finished: Yes
Enclosed: Yes
Contiguous: Yes
Permitted: Yes
Wet space: No
Addition: No
Conversion: No

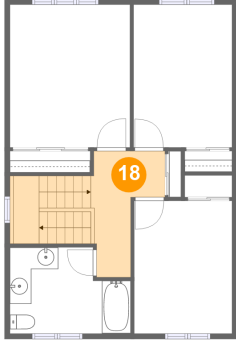
17 Floor 3 - Bedroom



Dimensions: 9'2" x 13'3"
Area: 122 sq. ft
Counted as living area: Yes

Heated: Yes
Finished: Yes
Enclosed: Yes
Contiguous: Yes
Permitted: Yes
Wet space: No
Addition: No
Conversion: No

18 Floor 3 - Hall



Dimensions: 6'11" x 11'9"
Area: 102 sq. ft
Counted as living area: Yes

Heated: Yes
Finished: Yes
Enclosed: Yes
Contiguous: Yes
Permitted: Yes
Wet space: No
Addition: No
Conversion: No