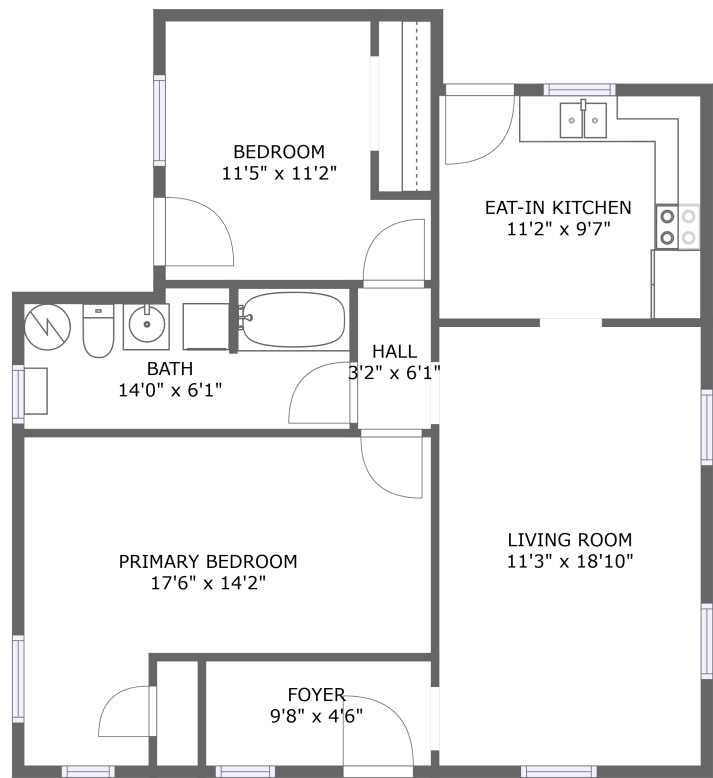



Home report


1547 3rd St,Sturgis,SD,US





FLOOR 1

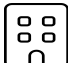
Property summary


**0** Garages


**2** Bedrooms

**1** Bathrooms

**0** Half baths

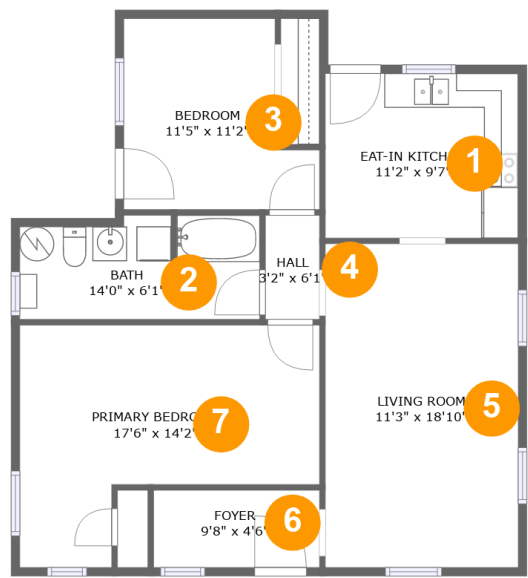
**1** Floors

**795** Gross living area sqft

**882** Total sqft

Home report

1547 3rd St,Sturgis,SD,US

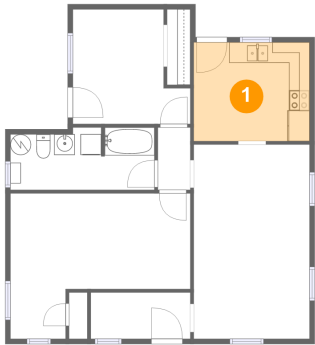


Room dimensions

Floor 1 Total sqft: 882 Living area: 795

#		Dimensions	sqft	Counted as living area
1	Eat-in Kitchen	11'2" x 9'7"	108 sq. ft	Yes
2	Bath	14'0" x 6'1"	80 sq. ft	No
3	Bedroom	11'5" x 11'2"	107 sq. ft	Yes
4	Hall	3'2" x 6'1"	19 sq. ft	Yes
5	Living Room	11'3" x 18'10"	212 sq. ft	Yes
6	Foyer	9'8" x 4'6"	44 sq. ft	Yes
7	Primary Bedroom	17'6" x 14'2"	188 sq. ft	Yes

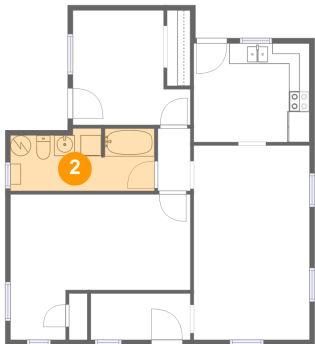
1 Floor 1 - Eat-in Kitchen



Dimensions: 11'2" x 9'7"
Area: 108 sq. ft
Counted as living area: Yes

Heated: Yes
Finished: Yes
Enclosed: Yes
Contiguous: Yes
Permitted: Yes
Wet space: No
Addition: No
Conversion: No

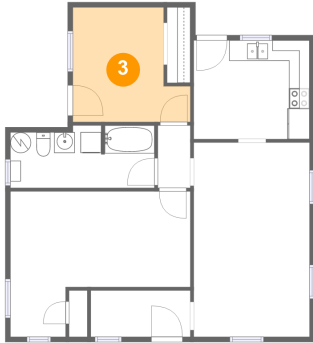
2 Floor 1 - Bath



Dimensions: 14'0" x 6'1"
Area: 80 sq. ft
Counted as living area: No

Heated: Yes
Finished: No
Enclosed: Yes
Contiguous: Yes
Permitted: Yes
Wet space: Yes
Addition: No
Conversion: No

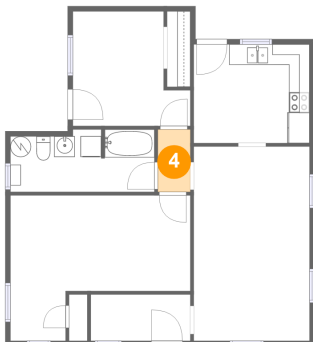
3 Floor 1 - Bedroom



Dimensions: 11'5" x 11'2"
Area: 107 sq. ft
Counted as living area: Yes

Heated: Yes
Finished: Yes
Enclosed: Yes
Contiguous: Yes
Permitted: Yes
Wet space: No
Addition: No
Conversion: No

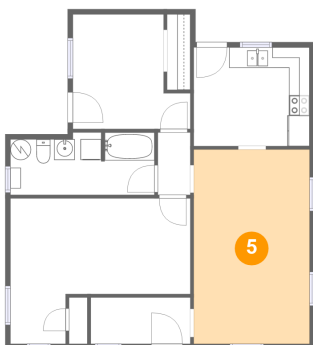
4 Floor 1 - Hall



Dimensions: 3'2" x 6'1"
Area: 19 sq. ft
Counted as living area: Yes

Heated: Yes
Finished: Yes
Enclosed: Yes
Contiguous: Yes
Permitted: Yes
Wet space: No
Addition: No
Conversion: No

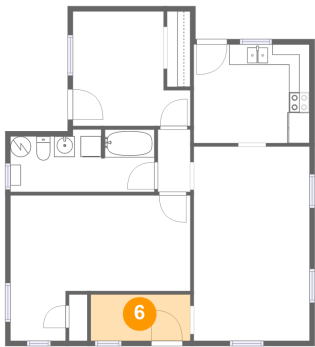
5 Floor 1 - Living Room



Dimensions: 11'3" x 18'10"
Area: 212 sq. ft
Counted as living area: Yes

Heated: Yes
Finished: Yes
Enclosed: Yes
Contiguous: Yes
Permitted: Yes
Wet space: No
Addition: No
Conversion: No

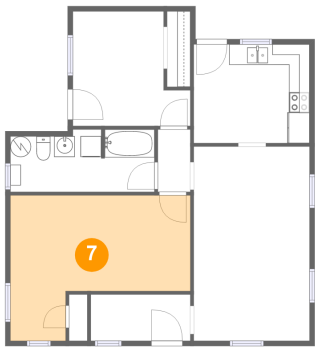
6 Floor 1 - Foyer



Dimensions: 9'8" x 4'6"
Area: 44 sq. ft
Counted as living area: Yes

Heated: Yes
Finished: Yes
Enclosed: Yes
Contiguous: Yes
Permitted: Yes
Wet space: No
Addition: No
Conversion: No

7 Floor 1 - Primary Bedroom



Dimensions: 17'6" x 14'2"
Area: 188 sq. ft
Counted as living area: Yes

Heated: Yes
Finished: Yes
Enclosed: Yes
Contiguous: Yes
Permitted: Yes
Wet space: No
Addition: No
Conversion: No