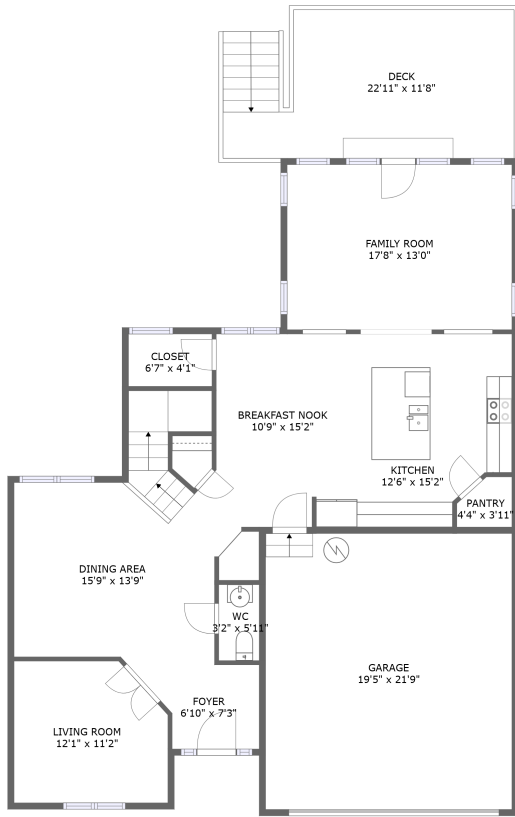
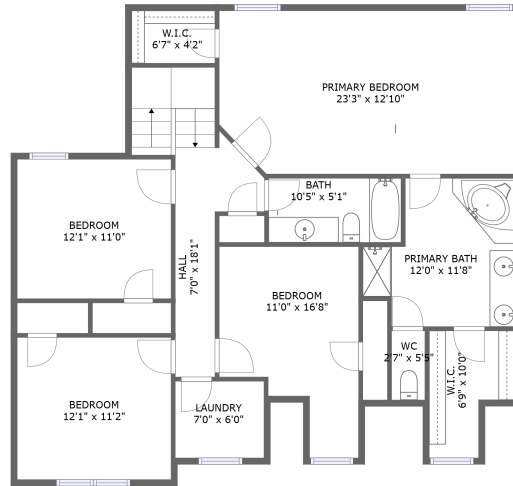


22199 Lake Jordan Drive, North Dinwiddie, Dinwiddie County, Virginia, United States,



FLOOR 1




FLOOR 2

Property Summary


 **1** garages

 **4** bedrooms

 **2** bathrooms

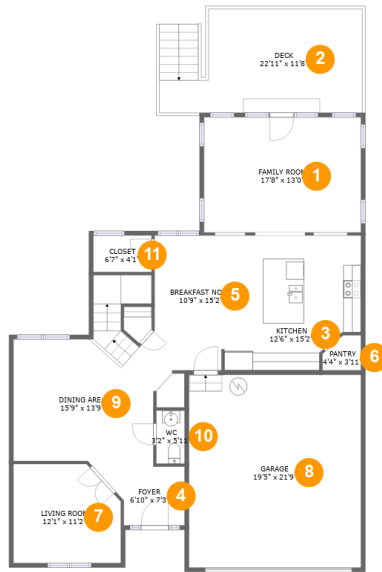
 **1** half baths

 **2** floors

 **2,436** Gross Living Area sqft

 **3,196** total sqft

22199 Lake Jordan Drive, North Dinwiddie, Dinwiddie County, Virginia, United States,



Room Dimensions

Floor 1

Total sqft: 1871

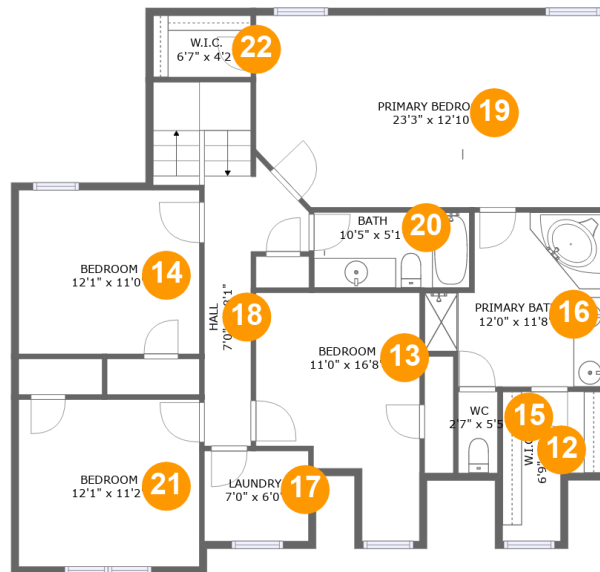
Living area: 1194

#	Room name	Dimensions	Area (sqft)	Counted as Living Area
1	Family Room	17'8" x 13'0"	230 sq. ft	Yes
2	Deck	22'11" x 11'8"	223 sq. ft	No
3	Kitchen	12'6" x 15'2"	175 sq. ft	Yes
4	Foyer	6'10" x 7'3"	57 sq. ft	Yes
5	Breakfast Nook	10'9" x 15'2"	232 sq. ft	Yes
6	Pantry	4'4" x 3'11"	15 sq. ft	Yes
7	Living Room	12'1" x 11'2"	127 sq. ft	Yes
8	Garage	19'5" x 21'9"	421 sq. ft	No
9	Dining Area	15'9" x 13'9"	196 sq. ft	Yes
10	Wc	3'2" x 5'11"	19 sq. ft	Yes
11	Closet	6'7" x 4'1"	27 sq. ft	Yes

Scan captured on Tue, 06 Aug 2024 18:50:59 GMT

Information is calculated by CubiCasa technology; deemed highly reliable but not guaranteed.

22199 Lake Jordan Drive, North Dinwiddie, Dinwiddie County, Virginia, United States,



Room Dimensions

Floor 2

Total sqft: 1325

Living area: 1242

#	Room name	Dimensions	Area (sqft)	Counted as Living Area
12	W.i.c.	6'9" x 10'0"	54 sq. ft	No
13	Bedroom	11'0" x 16'8"	142 sq. ft	Yes
14	Bedroom	12'1" x 11'0"	133 sq. ft	Yes
15	Wc	2'7" x 5'5"	14 sq. ft	No
16	Primary Bath	12'0" x 11'8"	116 sq. ft	Yes
17	Laundry	7'0" x 6'0"	42 sq. ft	Yes
18	Hall	7'0" x 18'1"	117 sq. ft	Yes
19	Primary Bedroom	23'3" x 12'10"	292 sq. ft	Yes
20	Bath	10'5" x 5'1"	53 sq. ft	Yes
21	Bedroom	12'1" x 11'2"	135 sq. ft	Yes
22	W.i.c.	6'7" x 4'2"	27 sq. ft	Yes

Scan captured on Tue, 06 Aug 2024 18:50:59 GMT

Information is calculated by CubiCasa technology; deemed highly reliable but not guaranteed.

22199 Lake Jordan Drive, North Dinwiddie, Dinwiddie County, Virginia, United States,

1 Floor 1 - Family Room



Dimensions: 17'8" x 13'0"
Area: 230 sq. ft
Counted as Living Area:
Yes

Heated: Yes
Finished: Yes
Enclosed: Yes
Contiguous:
Yes
Permitted: Yes
Wet Space: No
Addition: No
Conversion: No

2 Floor 1 - Deck



Dimensions: 22'11" x 11'8"
Area: 223 sq. ft
Counted as Living Area: No

Heated: No
Finished: Yes
Enclosed: No
Contiguous: Yes
Permitted: Yes
Wet Space: No
Addition: No
Conversion: No

22199 Lake Jordan Drive, North Dinwiddie, Dinwiddie County, Virginia, United States,

3 Floor 1 - Kitchen



Dimensions: 12'6" x 15'2"
Area: 175 sq. ft
Counted as Living Area:
Yes

Heated: Yes
Finished: Yes
Enclosed: Yes
Contiguous:
Yes
Permitted: Yes
Wet Space: No
Addition: No
Conversion: No

4 Floor 1 - Foyer



Dimensions: 6'10" x 7'3"
Area: 57 sq. ft
Counted as Living Area:
Yes

Heated: Yes
Finished: Yes
Enclosed: Yes
Contiguous:
Yes
Permitted: Yes
Wet Space: No
Addition: No
Conversion: No

5 Floor 1 - Breakfast Nook



Dimensions: 10'9" x 15'2"
Area: 232 sq. ft
Counted as Living Area:
Yes

Heated: Yes
Finished: Yes
Enclosed: Yes
Contiguous:
Yes
Permitted: Yes
Wet Space: No
Addition: No
Conversion: No

22199 Lake Jordan Drive, North Dinwiddie, Dinwiddie County, Virginia, United States,

6 Floor 1 - Pantry



Dimensions: 4'4" x 3'11"
Area: 15 sq. ft
Counted as Living Area:
Yes

Heated: Yes
Finished: Yes
Enclosed: Yes
Contiguous:
Yes
Permitted: Yes
Wet Space: No
Addition: No
Conversion: No

7 Floor 1 - Living Room



Dimensions: 12'1" x 11'2"
Area: 127 sq. ft
Counted as Living Area:
Yes

Heated: Yes
Finished: Yes
Enclosed: Yes
Contiguous:
Yes
Permitted: Yes
Wet Space: No
Addition: No
Conversion: No

8 Floor 1 - Garage



Dimensions: 19'5" x 21'9"
Area: 421 sq. ft
Counted as Living Area: No

Heated: No
Finished: No
Enclosed: Yes
Contiguous: Yes
Permitted: Yes
Wet Space: No
Addition: No
Conversion: No

22199 Lake Jordan Drive, North Dinwiddie, Dinwiddie County, Virginia, United States,

9 Floor 1 - Dining Area



Dimensions: 15'9" x 13'9"
Area: 196 sq. ft
Counted as Living Area:
Yes

Heated: Yes
Finished: Yes
Enclosed: Yes
Contiguous:
Yes
Permitted: Yes
Wet Space: No
Addition: No
Conversion: No

10 Floor 1 - Wc



Dimensions: 3'2" x 5'11"
Area: 19 sq. ft
Counted as Living Area:
Yes

Heated: Yes
Finished: Yes
Enclosed: Yes
Contiguous:
Yes
Permitted: Yes
Wet Space: Yes
Addition: No
Conversion: No

11 Floor 1 - Closet

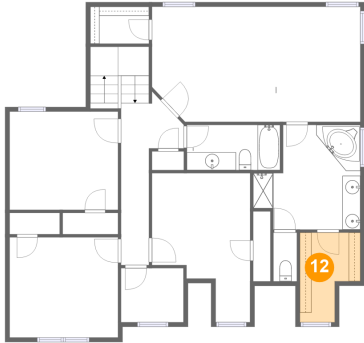


Dimensions: 6'7" x 4'1"
Area: 27 sq. ft
Counted as Living Area:
Yes

Heated: Yes
Finished: Yes
Enclosed: Yes
Contiguous:
Yes
Permitted: Yes
Wet Space: No
Addition: No
Conversion: No

**22199 Lake Jordan Drive, North Dinwiddie,
Dinwiddie County, Virginia, United States,**

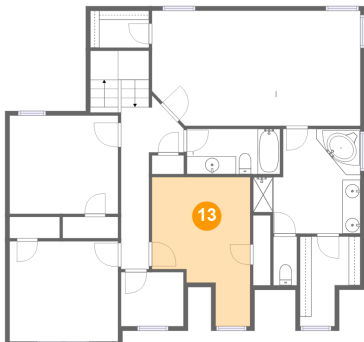
12 Floor 2 - W.i.c.



Dimensions: 6'9" x 10'0"
Area: 54 sq. ft
Counted as Living Area: No

Heated: Yes
Finished: Yes
Enclosed: Yes
Contiguous: Yes
Permitted: Yes
Wet Space: No
Addition: No
Conversion: No

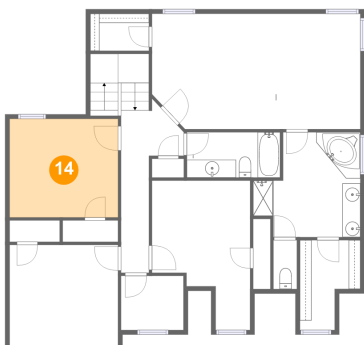
13 Floor 2 - Bedroom



Dimensions: 11'0" x 16'8"
Area: 142 sq. ft
Counted as Living Area:
Yes

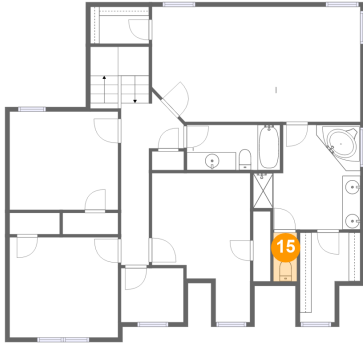
Heated: Yes
Finished: Yes
Enclosed: Yes
Contiguous:
Yes
Permitted: Yes
Wet Space: No
Addition: No
Conversion: No

14 Floor 2 - Bedroom



Dimensions: 12'1" x 11'0"
Area: 133 sq. ft
Counted as Living Area:
Yes

Heated: Yes
Finished: Yes
Enclosed: Yes
Contiguous:
Yes
Permitted: Yes
Wet Space: No
Addition: No
Conversion: No

**22199 Lake Jordan Drive, North Dinwiddie,
Dinwiddie County, Virginia, United States,****15 Floor 2 - Wc**

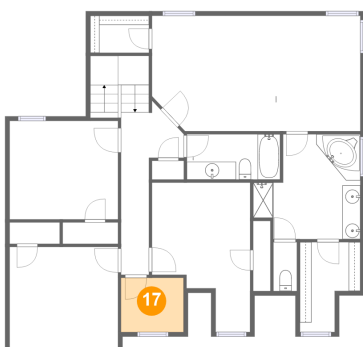
Dimensions: 2'7" x 5'5"
Area: 14 sq. ft
Counted as Living Area: No

Heated: Yes
Finished: Yes
Enclosed: Yes
Contiguous: Yes
Permitted: Yes
Wet Space: Yes
Addition: No
Conversion: No

16 Floor 2 - Primary Bath

Dimensions: 12'0" x 11'8"
Area: 116 sq. ft
Counted as Living Area:
Yes

Heated: Yes
Finished: Yes
Enclosed: Yes
Contiguous:
Yes
Permitted: Yes
Wet Space: Yes
Addition: No
Conversion: No

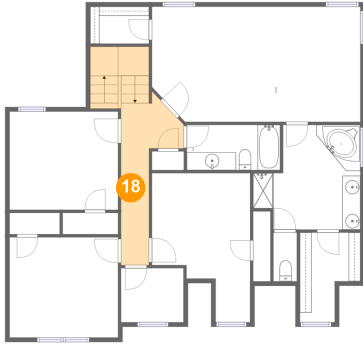
17 Floor 2 - Laundry

Dimensions: 7'0" x 6'0"
Area: 42 sq. ft
Counted as Living Area:
Yes

Heated: Yes
Finished: Yes
Enclosed: Yes
Contiguous:
Yes
Permitted: Yes
Wet Space: No
Addition: No
Conversion: No

**22199 Lake Jordan Drive, North Dinwiddie,
Dinwiddie County, Virginia, United States,**

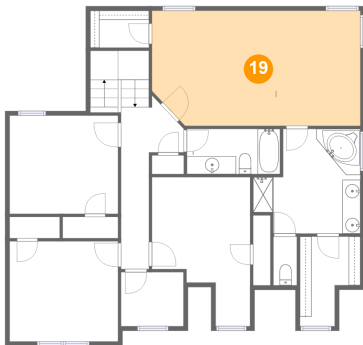
18 Floor 2 - Hall



Dimensions: 7'0" x 18'1"
Area: 117 sq. ft
Counted as Living Area:
Yes

Heated: Yes
Finished: Yes
Enclosed: Yes
Contiguous:
Yes
Permitted: Yes
Wet Space: No
Addition: No
Conversion: No

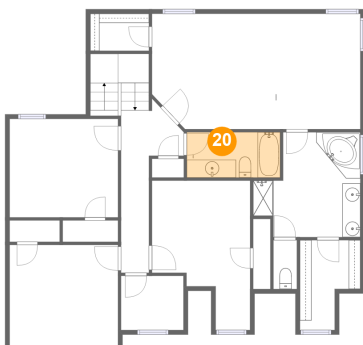
19 Floor 2 - Primary Bedroom



Dimensions: 23'3" x 12'10"
Area: 292 sq. ft
Counted as Living Area:
Yes

Heated: Yes
Finished: Yes
Enclosed: Yes
Contiguous:
Yes
Permitted: Yes
Wet Space: No
Addition: No
Conversion: No

20 Floor 2 - Bath

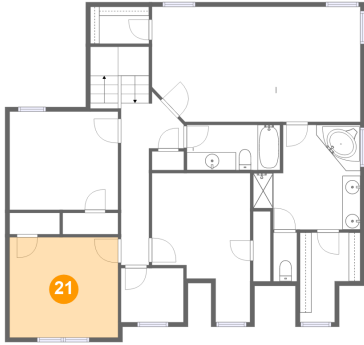


Dimensions: 10'5" x 5'1"
Area: 53 sq. ft
Counted as Living Area:
Yes

Heated: Yes
Finished: Yes
Enclosed: Yes
Contiguous:
Yes
Permitted: Yes
Wet Space: Yes
Addition: No
Conversion: No

**22199 Lake Jordan Drive, North Dinwiddie,
Dinwiddie County, Virginia, United States,**

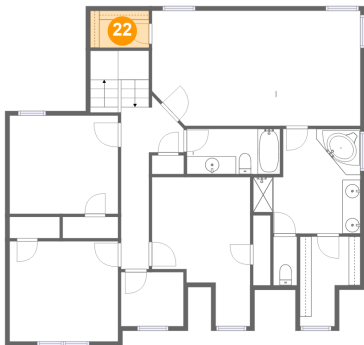
21 Floor 2 - Bedroom



Dimensions: 12'1" x 11'2"
Area: 135 sq. ft
Counted as Living Area:
Yes

Heated: Yes
Finished: Yes
Enclosed: Yes
Contiguous:
Yes
Permitted: Yes
Wet Space: No
Addition: No
Conversion: No

22 Floor 2 - W.i.c.



Dimensions: 6'7" x 4'2"
Area: 27 sq. ft
Counted as Living Area:
Yes

Heated: Yes
Finished: Yes
Enclosed: Yes
Contiguous:
Yes
Permitted: Yes
Wet Space: No
Addition: No
Conversion: No