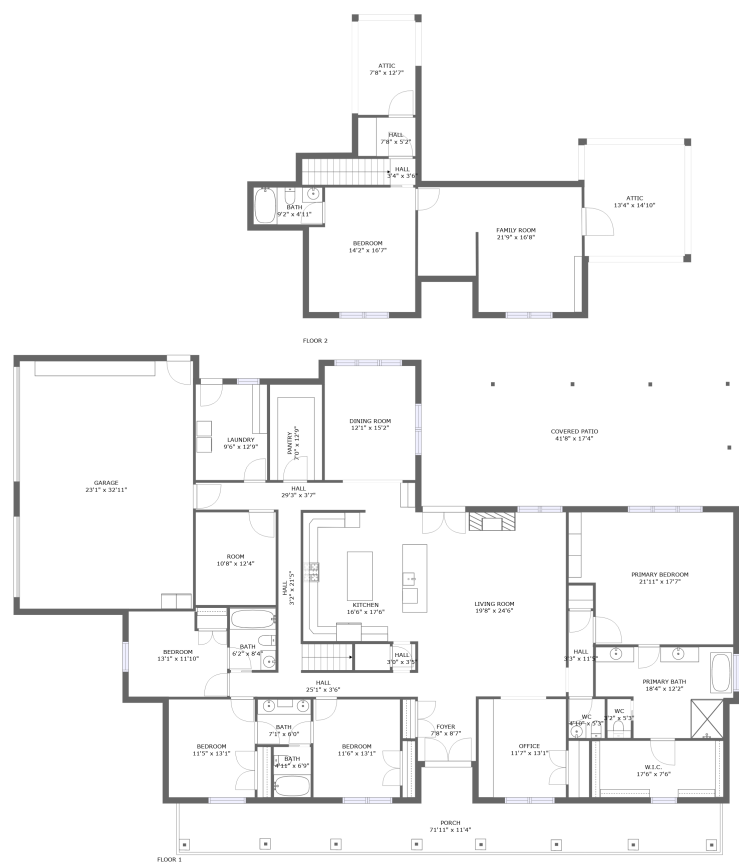


Home report

361 Piney Woods Road, Owens Cross Roads, Madison County, Alabama, United States, 35763



Total GLA: 4327 sq. ft

Floor 1: 3538 sq. ft, Floor 2: 789 sq. ft

Excluded: Garage 819 sq. ft, Porch 500 sq. ft, Covered patio 736 sq. ft, Attic 360 sq. ft, Low ceiling 21 sq. ft

Property summary

 **2** Floors

 **5** Bedrooms

 **4** Bathrooms

Home report

**361 Piney Woods Road, Owens Cross Roads, Madison County,
Alabama, United States, 35763**



1
Half baths



1
Garages

Home report

361 Piney Woods Road, Owens Cross Roads, Madison County, Alabama, United States, 35763



Room dimensions

Floor 1 Total:3538sqft Excluded: 2055sqft

#		Max Dimensions	sqft	Included
1	WC	3'2" x 5'3"	16 sq. ft	Yes
2	Dining Room	12'1" x 15'2"	183 sq. ft	Yes
3	W.I.C.	17'6" x 7'6"	132 sq. ft	Yes
4	Hall	29'3" x 3'7"	105 sq. ft	Yes
5	Living Room	19'8" x 24'6"	466 sq. ft	Yes
6	Laundry	9'6" x 12'9"	121 sq. ft	Yes
7	Bath	4'11" x 6'9"	33 sq. ft	Yes
8	Office	11'7" x 13'1"	152 sq. ft	Yes
9	Kitchen	16'6" x 17'6"	288 sq. ft	Yes
10	Pantry	7'0" x 12'9"	89 sq. ft	Yes
11	Foyer	7'8" x 8'7"	67 sq. ft	Yes

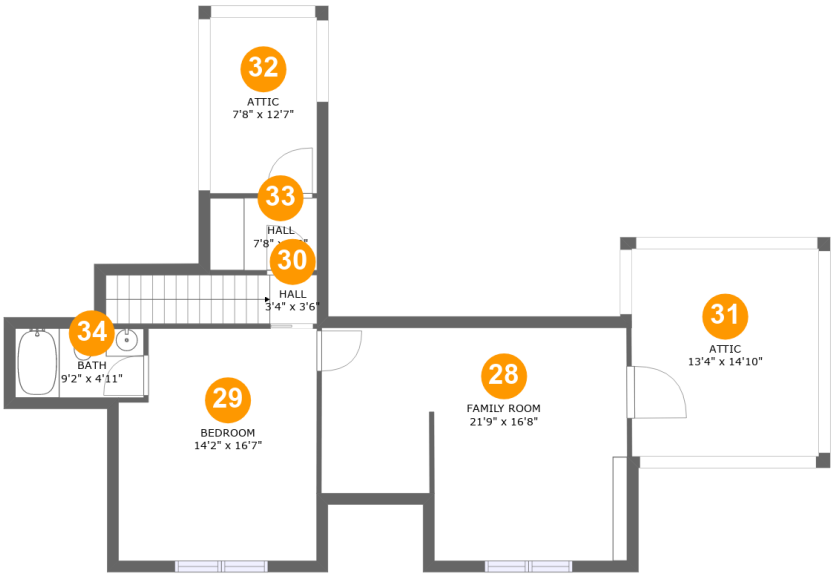
Home report

**361 Piney Woods Road, Owens Cross Roads, Madison County,
Alabama, United States, 35763**

#		Max Dimensions	sqft	Included
12	Hall	3'2" x 21'5"	89 sq. ft	Yes
13	Hall	3'0" x 3'5"	11 sq. ft	Yes
14	Garage	23'1" x 32'11"	760 sq. ft	No
15	Bedroom	11'6" x 13'1"	150 sq. ft	Yes
16	Hall	25'1" x 3'6"	80 sq. ft	Yes
17	Bath	7'1" x 6'0"	43 sq. ft	Yes
18	Primary Bedroom	21'11" x 17'7"	356 sq. ft	Yes
19	Hall	3'3" x 11'5"	37 sq. ft	Yes
20	Primary Bath	18'4" x 12'2"	187 sq. ft	Yes
21	Room	10'8" x 12'4"	132 sq. ft	Yes
22	Bedroom	13'1" x 11'10"	149 sq. ft	Yes
23	WC	4'10" x 5'3"	25 sq. ft	Yes
24	Bedroom	11'5" x 13'1"	149 sq. ft	Yes
25	Covered Patio	41'8" x 17'4"	736 sq. ft	No
26	Bath	6'2" x 8'4"	51 sq. ft	Yes
27	Porch	71'11" x 11'4"	500 sq. ft	No

Home report

361 Piney Woods Road, Owens Cross Roads, Madison County,
Alabama, United States, 35763



Room dimensions

Floor 2 Total:789sqft Excluded: 381sqft

#		Max Dimensions	sqft	Included
28	Family Room	21'9" x 16'8"	307 sq. ft	Yes
29	Bedroom	14'2" x 16'7"	223 sq. ft	Yes
30	Hall	3'4" x 3'6"	53 sq. ft	Yes
31	Attic	13'4" x 14'10"	198 sq. ft	No
32	Attic	7'8" x 12'7"	96 sq. ft	No
33	Hall	7'8" x 5'2"	39 sq. ft	Yes
34	Bath	9'2" x 4'11"	45 sq. ft	Yes

361 Piney Woods Road, Owens Cross Roads, Madison County,
Alabama, United States, 35763

1 Floor 1 - WC



Max Dimensions: 3'2" x 5'3"
Calculated Area: 16 sq. ft
Included: Yes

Heated: Yes
Finished: Yes
Enclosed: Yes
Contiguous: Yes
Permitted: Yes
Wet space: No
Addition: No
Conversion: No

2 Floor 1 - Dining Room



Max Dimensions: 12'1" x 15'2"
Calculated Area: 183 sq. ft
Included: Yes

Heated: Yes
Finished: Yes
Enclosed: Yes
Contiguous: Yes
Permitted: Yes
Wet space: No
Addition: No
Conversion: No

361 Piney Woods Road, Owens Cross Roads, Madison County,
Alabama, United States, 35763

3 Floor 1 - W.I.C.



Max Dimensions: 17'6" x 7'6"
Calculated Area: 132 sq. ft
Included: Yes

Heated: Yes
Finished: Yes
Enclosed: Yes
Contiguous: Yes
Permitted: Yes
Wet space: No
Addition: No
Conversion: No

4 Floor 1 - Hall



Max Dimensions: 29'3" x 3'7"
Calculated Area: 105 sq. ft
Included: Yes

Heated: Yes
Finished: Yes
Enclosed: Yes
Contiguous: Yes
Permitted: Yes
Wet space: No
Addition: No
Conversion: No

5 Floor 1 - Living Room



Max Dimensions: 19'8" x 24'6"
Calculated Area: 466 sq. ft
Included: Yes

Heated: Yes
Finished: Yes
Enclosed: Yes
Contiguous: Yes
Permitted: Yes
Wet space: No
Addition: No
Conversion: No

361 Piney Woods Road, Owens Cross Roads, Madison County,
Alabama, United States, 35763

6 Floor 1 - Laundry



Max Dimensions: 9'6" x
12'9"
Calculated Area: 121 sq. ft
Included: Yes

Heated: Yes
Finished: Yes
Enclosed: Yes
Contiguous:
Yes
Permitted: Yes
Wet space: No
Addition: No
Conversion: No

7 Floor 1 - Bath



Max Dimensions: 4'11" x
6'9"
Calculated Area: 33 sq. ft
Included: Yes

Heated: Yes
Finished: Yes
Enclosed: Yes
Contiguous:
Yes
Permitted: Yes
Wet space: Yes
Addition: No
Conversion: No

8 Floor 1 - Office



Max Dimensions: 11'7" x
13'1"
Calculated Area: 152 sq. ft
Included: Yes

Heated: Yes
Finished: Yes
Enclosed: Yes
Contiguous:
Yes
Permitted: Yes
Wet space: No
Addition: No
Conversion: No

361 Piney Woods Road, Owens Cross Roads, Madison County,
Alabama, United States, 35763

9 Floor 1 - Kitchen



Max Dimensions: 16'6" x 17'6"
Calculated Area: 288 sq. ft
Included: Yes

Heated: Yes
Finished: Yes
Enclosed: Yes
Contiguous: Yes
Permitted: Yes
Wet space: No
Addition: No
Conversion: No

10 Floor 1 - Pantry



Max Dimensions: 7'0" x 12'9"
Calculated Area: 89 sq. ft
Included: Yes

Heated: Yes
Finished: Yes
Enclosed: Yes
Contiguous: Yes
Permitted: Yes
Wet space: No
Addition: No
Conversion: No

11 Floor 1 - Foyer



Max Dimensions: 7'8" x 8'7"
Calculated Area: 67 sq. ft
Included: Yes

Heated: Yes
Finished: Yes
Enclosed: Yes
Contiguous: Yes
Permitted: Yes
Wet space: No
Addition: No
Conversion: No

361 Piney Woods Road, Owens Cross Roads, Madison County,
Alabama, United States, 35763

12 Floor 1 - Hall



Max Dimensions: 3'2" x 21'5"
Calculated Area: 89 sq. ft
Included: Yes

Heated: Yes
Finished: Yes
Enclosed: Yes
Contiguous: Yes
Permitted: Yes
Wet space: No
Addition: No
Conversion: No

13 Floor 1 - Hall



Max Dimensions: 3'0" x 3'5"
Calculated Area: 11 sq. ft
Included: Yes

Heated: Yes
Finished: Yes
Enclosed: Yes
Contiguous: Yes
Permitted: Yes
Wet space: No
Addition: No
Conversion: No

14 Floor 1 - Garage



Max Dimensions: 23'1" x 32'11"
Calculated Area: 760 sq. ft
Included: No

Heated: No
Finished: No
Enclosed: Yes
Contiguous: Yes
Permitted: Yes
Wet space: No
Addition: No
Conversion: No

361 Piney Woods Road, Owens Cross Roads, Madison County,
Alabama, United States, 35763

15 Floor 1 - Bedroom



Max Dimensions: 11'6" x 13'1"
Calculated Area: 150 sq. ft
Included: Yes

Heated: Yes
Finished: Yes
Enclosed: Yes
Contiguous: Yes
Permitted: Yes
Wet space: No
Addition: No
Conversion: No

16 Floor 1 - Hall



Max Dimensions: 25'1" x 3'6"
Calculated Area: 80 sq. ft
Included: Yes

Heated: Yes
Finished: Yes
Enclosed: Yes
Contiguous: Yes
Permitted: Yes
Wet space: No
Addition: No
Conversion: No

17 Floor 1 - Bath



Max Dimensions: 7'1" x 6'0"
Calculated Area: 43 sq. ft
Included: Yes

Heated: Yes
Finished: Yes
Enclosed: Yes
Contiguous: Yes
Permitted: Yes
Wet space: Yes
Addition: No
Conversion: No

361 Piney Woods Road, Owens Cross Roads, Madison County,
Alabama, United States, 35763

18 Floor 1 - Primary Bedroom



Max Dimensions: 21'11" x 17'7"
Calculated Area: 356 sq. ft
Included: Yes

Heated: Yes
Finished: Yes
Enclosed: Yes
Contiguous: Yes
Permitted: Yes
Wet space: No
Addition: No
Conversion: No

19 Floor 1 - Hall



Max Dimensions: 3'3" x 11'5"
Calculated Area: 37 sq. ft
Included: Yes

Heated: Yes
Finished: Yes
Enclosed: Yes
Contiguous: Yes
Permitted: Yes
Wet space: No
Addition: No
Conversion: No

20 Floor 1 - Primary Bath



Max Dimensions: 18'4" x 12'2"
Calculated Area: 187 sq. ft
Included: Yes

Heated: Yes
Finished: Yes
Enclosed: Yes
Contiguous: Yes
Permitted: Yes
Wet space: Yes
Addition: No
Conversion: No

361 Piney Woods Road, Owens Cross Roads, Madison County,
Alabama, United States, 35763

21 Floor 1 - Room



Max Dimensions: 10'8" x 12'4"
Calculated Area: 132 sq. ft
Included: Yes

Heated: Yes
Finished: Yes
Enclosed: Yes
Contiguous: Yes
Permitted: Yes
Wet space: No
Addition: No
Conversion: No

22 Floor 1 - Bedroom



Max Dimensions: 13'1" x 11'10"
Calculated Area: 149 sq. ft
Included: Yes

Heated: Yes
Finished: Yes
Enclosed: Yes
Contiguous: Yes
Permitted: Yes
Wet space: No
Addition: No
Conversion: No

23 Floor 1 - WC



Max Dimensions: 4'10" x 5'3"
Calculated Area: 25 sq. ft
Included: Yes

Heated: Yes
Finished: Yes
Enclosed: Yes
Contiguous: Yes
Permitted: Yes
Wet space: Yes
Addition: No
Conversion: No

361 Piney Woods Road, Owens Cross Roads, Madison County,
Alabama, United States, 35763

24 Floor 1 - Bedroom



Max Dimensions: 11'5" x 13'1"
Calculated Area: 149 sq. ft
Included: Yes

Heated: Yes
Finished: Yes
Enclosed: Yes
Contiguous: Yes
Permitted: Yes
Wet space: No
Addition: No
Conversion: No

25 Floor 1 - Covered Patio



Max Dimensions: 41'8" x 17'4"
Calculated Area: 736 sq. ft
Included: No

Heated: No
Finished: Yes
Enclosed: No
Contiguous: Yes
Permitted: Yes
Wet space: No
Addition: No
Conversion: No

26 Floor 1 - Bath



Max Dimensions: 6'2" x 8'4"
Calculated Area: 51 sq. ft
Included: Yes

Heated: Yes
Finished: Yes
Enclosed: Yes
Contiguous: Yes
Permitted: Yes
Wet space: Yes
Addition: No
Conversion: No

361 Piney Woods Road, Owens Cross Roads, Madison County,
Alabama, United States, 35763

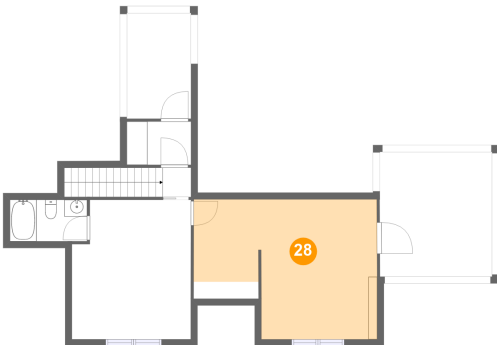
27 Floor 1 - Porch



Max Dimensions: 71'11" x 11'4"
Calculated Area: 500 sq. ft
Included: No

Heated: No
Finished: Yes
Enclosed: No
Contiguous: Yes
Permitted: Yes
Wet space: No
Addition: No
Conversion: No

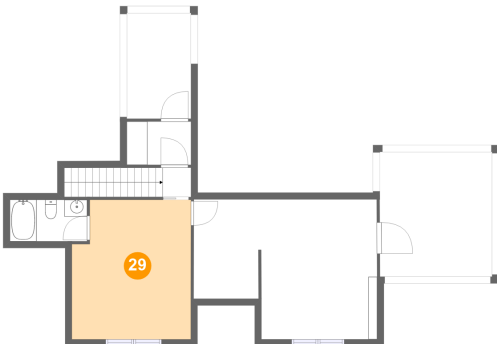
28 Floor 2 - Family Room



Max Dimensions: 21'9" x 16'8"
Calculated Area: 307 sq. ft
Included: Yes

Heated: Yes
Finished: Yes
Enclosed: Yes
Contiguous: Yes
Permitted: Yes
Wet space: No
Addition: No
Conversion: No

29 Floor 2 - Bedroom

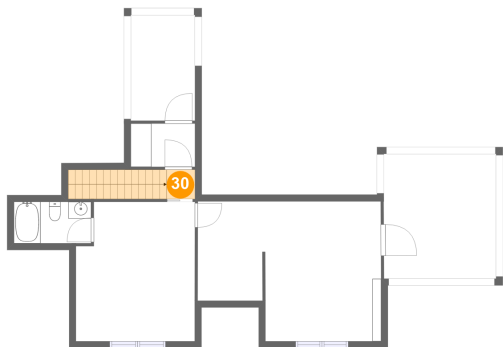


Max Dimensions: 14'2" x 16'7"
Calculated Area: 223 sq. ft
Included: Yes

Heated: Yes
Finished: Yes
Enclosed: Yes
Contiguous: Yes
Permitted: Yes
Wet space: No
Addition: No
Conversion: No

361 Piney Woods Road, Owens Cross Roads, Madison County,
Alabama, United States, 35763

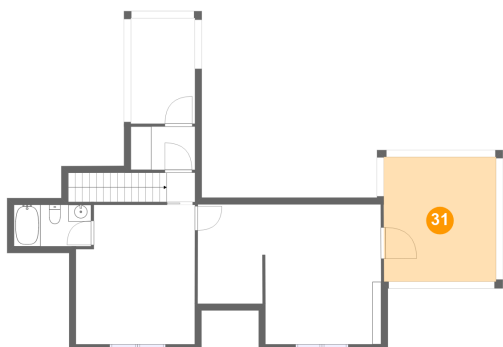
30 Floor 2 - Hall



Max Dimensions: 3'4" x 3'6"
Calculated Area: 53 sq. ft
Included: Yes

Heated: Yes
Finished: Yes
Enclosed: Yes
Contiguous: Yes
Permitted: Yes
Wet space: No
Addition: No
Conversion: No

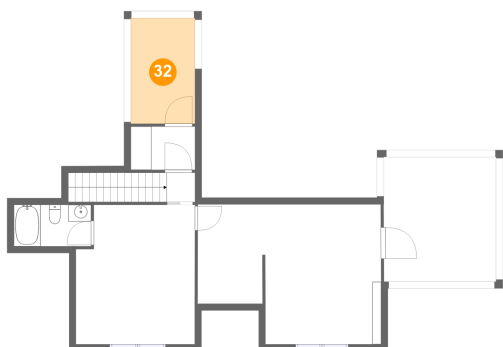
31 Floor 2 - Attic



Max Dimensions: 13'4" x 14'10"
Calculated Area: 198 sq. ft
Included: No

Heated: No
Finished: No
Enclosed: Yes
Contiguous: Yes
Permitted: Yes
Wet space: No
Addition: No
Conversion: No

32 Floor 2 - Attic

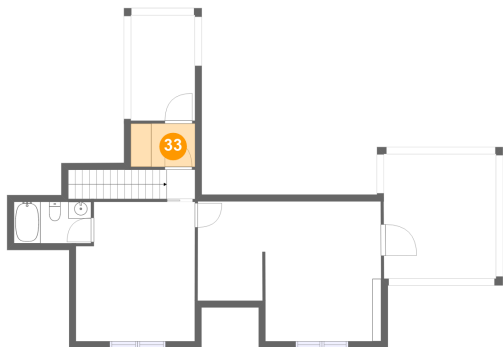


Max Dimensions: 7'8" x 12'7"
Calculated Area: 96 sq. ft
Included: No

Heated: No
Finished: No
Enclosed: Yes
Contiguous: Yes
Permitted: Yes
Wet space: No
Addition: No
Conversion: No

361 Piney Woods Road, Owens Cross Roads, Madison County,
Alabama, United States, 35763

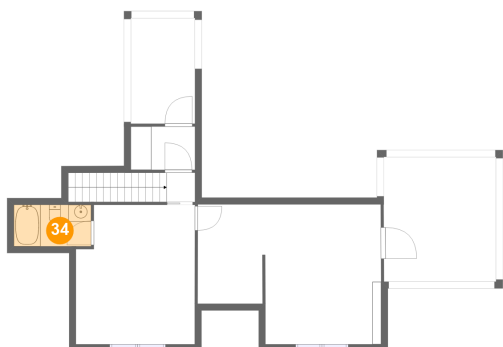
33 Floor 2 - Hall



Max Dimensions: 7'8" x 5'2"
Calculated Area: 39 sq. ft
Included: Yes

Heated: Yes
Finished: Yes
Enclosed: Yes
Contiguous: Yes
Permitted: Yes
Wet space: No
Addition: No
Conversion: No

34 Floor 2 - Bath



Max Dimensions: 9'2" x 4'11"
Calculated Area: 45 sq. ft
Included: Yes

Heated: Yes
Finished: Yes
Enclosed: Yes
Contiguous: Yes
Permitted: Yes
Wet space: Yes
Addition: No
Conversion: No