

1323 Spindrift Rd  
Aberdeen, MD 21001

1323 Spindrift Rd  
Aberdeen, MD 21001

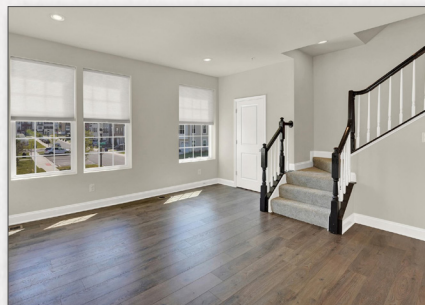
Betsy Counts  
Realtor®

Mobile: (410) 459-8226





Office: (410) 879-8080

Email: [Betsycounts@msn.com](mailto:Betsycounts@msn.com)

Web: [www.betsycounts.com](http://www.betsycounts.com)





 3 Bed
  2 Full 2 Half Bath
  2,296 Sq Ft
  0.8 Acres



### *Gorgeous, 3 bedroom, 4 bath - End of Group Townhome*

Loaded from top to bottom with new upgraded carpet over \$4,000.00, new paint \$3,900.00 (no nail holes anywhere – ready for your pictures), new granite and kitchen backsplash \$4,200.00. The three-level rear extension allows the beautiful sunroom extension, an extended basement, and a private sitting area in your luxurious primary retreat. With the open and spacious main floor, you will find an inviting gourmet kitchen, living room, powder room, and dining space. Enjoy resort living with the community pool, tennis/pickleball courts, clubhouse, pond, trails & private fitness center.

The information contained herein has been obtained through sources deemed reliable by the Realtor, but cannot be guaranteed for its accuracy. We recommend to the buyer that any information, which is of special interest, should be obtained through independent verification. ALL MEASUREMENTS ARE APPROXIMATE. Photography & Flyer produced by: Real Estate Exposures - www.rexps.com - (717) 747-3235



Produced by:





PRESENTED BY

**Betsy Counts**  
Realtor®

Mobile: (410) 459-8226

Office: (410) 879-8080

Email: [BetsyCounts@msn.com](mailto:BetsyCounts@msn.com)

Web: [www.BetsyCounts.com](http://www.BetsyCounts.com)



**LONG & FOSTER**  
REAL ESTATE

**CHRISTIE'S**  
INTERNATIONAL REAL ESTATE

