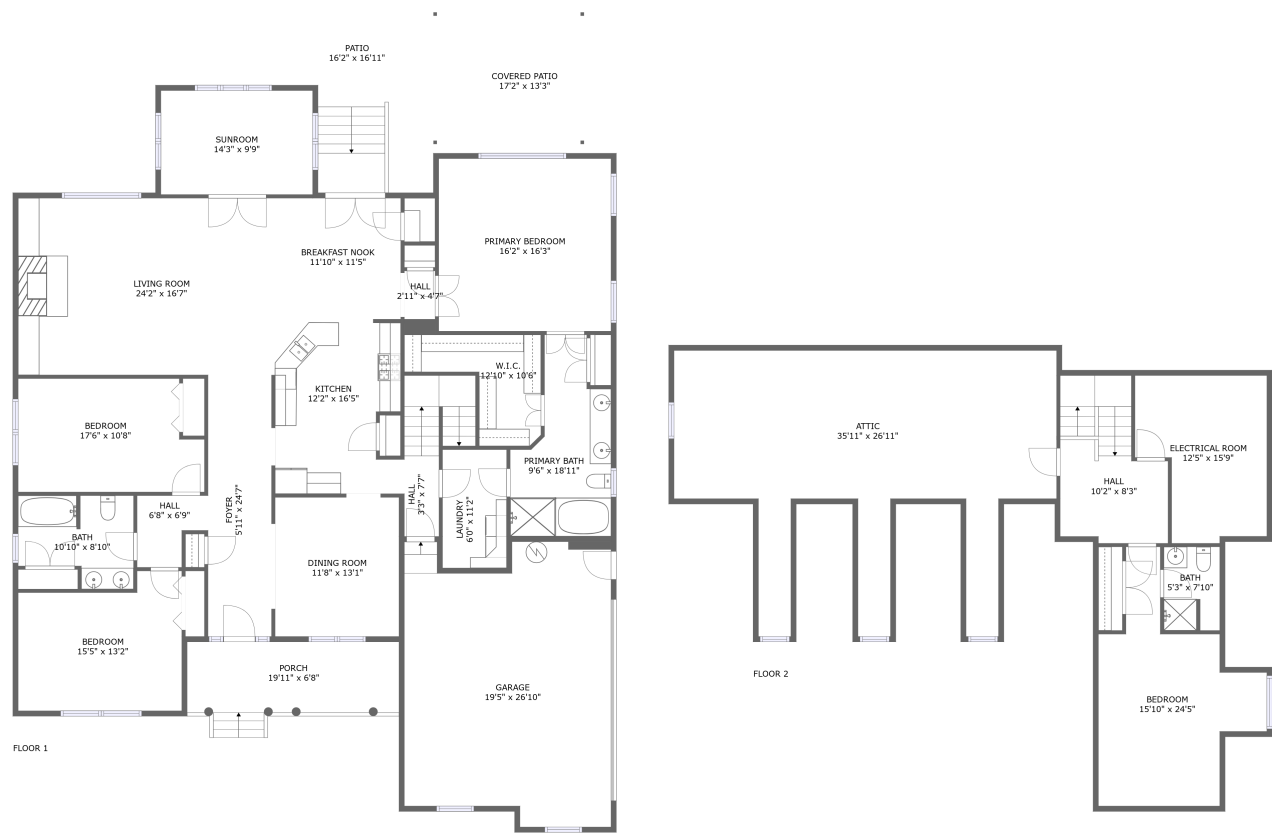


Home report

11019 Vogel Court, North Chesterfield, Chesterfield County,  
Virginia, United States, 23236

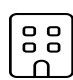



Total Area: 2860 sq. ft

Floor 1: 2440 sq. ft, Floor 2: 420 sq. ft

Excluded: Garage 479 sq. ft, Porch 133 sq. ft, Patio 221 sq. ft, Covered patio 228 sq. ft, Attic 620 sq. ft, Electrical room 165 sq. ft, Low ceiling 27 sq. ft, Walls: 298 sq. ft

Property summary

 **2** Floors

 **4** Bedrooms

 **3** Bathrooms

 **1** Garages

Home report

11019 Vogel Court, North Chesterfield, Chesterfield County,  
Virginia, United States, 23236



Room dimensions

Floor 1 Total:2440sqft   Excluded: 1061sqft

#		Max Dimensions	sqft	Included
1	Kitchen	12'2" x 16'5"	184 sq. ft	Yes
2	Bedroom	17'6" x 10'8"	173 sq. ft	Yes
3	Garage	19'5" x 26'10"	479 sq. ft	No
4	Hall	3'3" x 7'7"	71 sq. ft	Yes
5	Patio	16'2" x 16'11"	221 sq. ft	No
6	Sunroom	14'3" x 9'9"	140 sq. ft	Yes
7	Bath	10'10" x 8'10"	81 sq. ft	Yes
8	Foyer	5'11" x 24'7"	147 sq. ft	Yes
9	Hall	6'8" x 6'9"	36 sq. ft	Yes
10	W.I.C.	12'10" x 10'6"	88 sq. ft	Yes
11	Primary Bath	9'6" x 18'11"	134 sq. ft	Yes

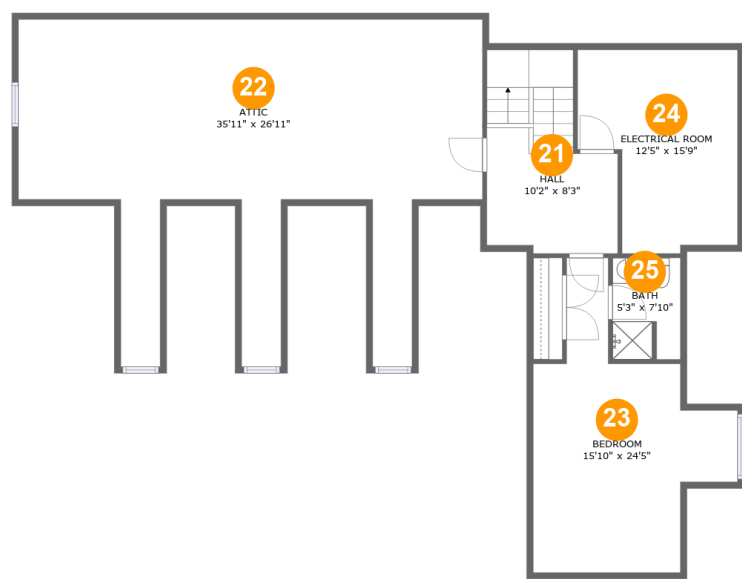
## Home report

**11019 Vogel Court, North Chesterfield, Chesterfield County,  
Virginia, United States, 23236**

#		Max Dimensions	sqft	Included
12	Porch	19'11" x 6'8"	133 sq. ft	No
13	Living Room	24'2" x 16'7"	402 sq. ft	Yes
14	Primary Bedroom	16'2" x 16'3"	263 sq. ft	Yes
15	Breakfast Nook	11'10" x 11'5"	135 sq. ft	Yes
16	Covered Patio	17'2" x 13'3"	228 sq. ft	No
17	Dining Room	11'8" x 13'1"	152 sq. ft	Yes
18	Hall	2'11" x 4'7"	13 sq. ft	Yes
19	Laundry	6'0" x 11'2"	67 sq. ft	Yes
20	Bedroom	15'5" x 13'2"	180 sq. ft	Yes

Home report

11019 Vogel Court, North Chesterfield, Chesterfield County,  
Virginia, United States, 23236



Room dimensions

Floor 2 Total:420sqft    Excluded: 812sqft

#		Max Dimensions	sqft	Included
21	Hall	10'2" x 8'3"	127 sq. ft	Yes
22	Attic	35'11" x 26'11"	620 sq. ft	No
23	Bedroom	15'10" x 24'5"	221 sq. ft	Yes
24	Electrical Room	12'5" x 15'9"	165 sq. ft	No
25	Bath	5'3" x 7'10"	36 sq. ft	Yes

11019 Vogel Court, North Chesterfield, Chesterfield County,  
Virginia, United States, 23236

## 1 Floor 1 - Kitchen



Max Dimensions: 12'2" x  
16'5"  
Calculated Area: 184 sq. ft  
Included: Yes

Heated: Yes  
Finished: Yes  
Enclosed: Yes  
Contiguous:  
Yes  
Permitted: Yes  
Wet space: No  
Addition: No  
Conversion: No

## 2 Floor 1 - Bedroom



Max Dimensions: 17'6" x  
10'8"  
Calculated Area: 173 sq. ft  
Included: Yes

Heated: Yes  
Finished: Yes  
Enclosed: Yes  
Contiguous:  
Yes  
Permitted: Yes  
Wet space: No  
Addition: No  
Conversion: No

11019 Vogel Court, North Chesterfield, Chesterfield County,  
Virginia, United States, 23236

### 3 Floor 1 - Garage



Max Dimensions: 19'5" x  
26'10"  
Calculated Area: 479 sq. ft  
Included: No

Heated: No  
Finished: No  
Enclosed: Yes  
Contiguous:  
Yes  
Permitted: Yes  
Wet space: No  
Addition: No  
Conversion: No

### 4 Floor 1 - Hall



Max Dimensions: 3'3" x 7'7"  
Calculated Area: 71 sq. ft  
Included: Yes

Heated: Yes  
Finished: Yes  
Enclosed: Yes  
Contiguous: Yes  
Permitted: Yes  
Wet space: No  
Addition: No  
Conversion: No

### 5 Floor 1 - Patio



Max Dimensions: 16'2" x  
16'11"  
Calculated Area: 221 sq. ft  
Included: No

Heated: No  
Finished: Yes  
Enclosed: No  
Contiguous:  
Yes  
Permitted: Yes  
Wet space: No  
Addition: No  
Conversion: No

11019 Vogel Court, North Chesterfield, Chesterfield County,  
Virginia, United States, 23236

## 6 Floor 1 - Sunroom



Max Dimensions: 14'3" x 9'9"  
Calculated Area: 140 sq. ft  
Included: Yes

Heated: Yes  
Finished: Yes  
Enclosed: Yes  
Contiguous: Yes  
Permitted: Yes  
Wet space: No  
Addition: No  
Conversion: No

## 7 Floor 1 - Bath



Max Dimensions: 10'10" x 8'10"  
Calculated Area: 81 sq. ft  
Included: Yes

Heated: Yes  
Finished: Yes  
Enclosed: Yes  
Contiguous: Yes  
Permitted: Yes  
Wet space: Yes  
Addition: No  
Conversion: No

## 8 Floor 1 - Foyer



Max Dimensions: 5'11" x 24'7"  
Calculated Area: 147 sq. ft  
Included: Yes

Heated: Yes  
Finished: Yes  
Enclosed: Yes  
Contiguous: Yes  
Permitted: Yes  
Wet space: No  
Addition: No  
Conversion: No

11019 Vogel Court, North Chesterfield, Chesterfield County,  
Virginia, United States, 23236

9 Floor 1 - Hall



Max Dimensions: 6'8" x 6'9"  
Calculated Area: 36 sq. ft  
Included: Yes

Heated: Yes  
Finished: Yes  
Enclosed: Yes  
Contiguous: Yes  
Permitted: Yes  
Wet space: No  
Addition: No  
Conversion: No

10 Floor 1 - W.I.C.



Max Dimensions: 12'10" x 10'6"  
Calculated Area: 88 sq. ft  
Included: Yes

Heated: Yes  
Finished: Yes  
Enclosed: Yes  
Contiguous: Yes  
Permitted: Yes  
Wet space: No  
Addition: No  
Conversion: No

11 Floor 1 - Primary Bath



Max Dimensions: 9'6" x 18'11"  
Calculated Area: 134 sq. ft  
Included: Yes

Heated: Yes  
Finished: Yes  
Enclosed: Yes  
Contiguous: Yes  
Permitted: Yes  
Wet space: Yes  
Addition: No  
Conversion: No



11019 Vogel Court, North Chesterfield, Chesterfield County,  
Virginia, United States, 23236

12 Floor 1 - Porch



Max Dimensions: 19'11" x 6'8"  
Calculated Area: 133 sq. ft  
Included: No

Heated: No  
Finished: Yes  
Enclosed: No  
Contiguous: Yes  
Permitted: Yes  
Wet space: No  
Addition: No  
Conversion: No

13 Floor 1 - Living Room



Max Dimensions: 24'2" x 16'7"  
Calculated Area: 402 sq. ft  
Included: Yes

Heated: Yes  
Finished: Yes  
Enclosed: Yes  
Contiguous: Yes  
Permitted: Yes  
Wet space: No  
Addition: No  
Conversion: No

14 Floor 1 - Primary Bedroom



Max Dimensions: 16'2" x 16'3"  
Calculated Area: 263 sq. ft  
Included: Yes

Heated: Yes  
Finished: Yes  
Enclosed: Yes  
Contiguous: Yes  
Permitted: Yes  
Wet space: No  
Addition: No  
Conversion: No

11019 Vogel Court, North Chesterfield, Chesterfield County,  
Virginia, United States, 23236

15 Floor 1 - Breakfast Nook



Max Dimensions: 11'10" x 11'5"  
Calculated Area: 135 sq. ft  
Included: Yes

Heated: Yes  
Finished: Yes  
Enclosed: Yes  
Contiguous: Yes  
Permitted: Yes  
Wet space: No  
Addition: No  
Conversion: No

16 Floor 1 - Covered Patio



Max Dimensions: 17'2" x 13'3"  
Calculated Area: 228 sq. ft  
Included: No

Heated: No  
Finished: Yes  
Enclosed: No  
Contiguous: Yes  
Permitted: Yes  
Wet space: No  
Addition: No  
Conversion: No

17 Floor 1 - Dining Room



Max Dimensions: 11'8" x 13'1"  
Calculated Area: 152 sq. ft  
Included: Yes

Heated: Yes  
Finished: Yes  
Enclosed: Yes  
Contiguous: Yes  
Permitted: Yes  
Wet space: No  
Addition: No  
Conversion: No

11019 Vogel Court, North Chesterfield, Chesterfield County,  
Virginia, United States, 23236

18 Floor 1 - Hall



Max Dimensions: 2'11" x 4'7"  
Calculated Area: 13 sq. ft  
Included: Yes

Heated: Yes  
Finished: Yes  
Enclosed: Yes  
Contiguous: Yes  
Permitted: Yes  
Wet space: No  
Addition: No  
Conversion: No

19 Floor 1 - Laundry



Max Dimensions: 6'0" x 11'2"  
Calculated Area: 67 sq. ft  
Included: Yes

Heated: Yes  
Finished: Yes  
Enclosed: Yes  
Contiguous: Yes  
Permitted: Yes  
Wet space: No  
Addition: No  
Conversion: No

20 Floor 1 - Bedroom

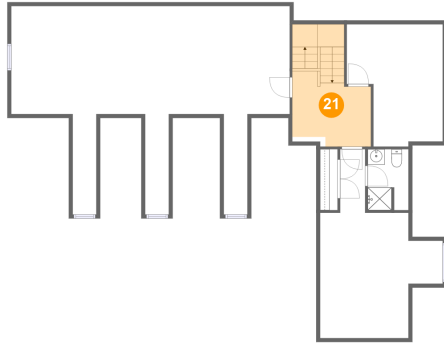


Max Dimensions: 15'5" x 13'2"  
Calculated Area: 180 sq. ft  
Included: Yes

Heated: Yes  
Finished: Yes  
Enclosed: Yes  
Contiguous: Yes  
Permitted: Yes  
Wet space: No  
Addition: No  
Conversion: No

11019 Vogel Court, North Chesterfield, Chesterfield County,  
Virginia, United States, 23236

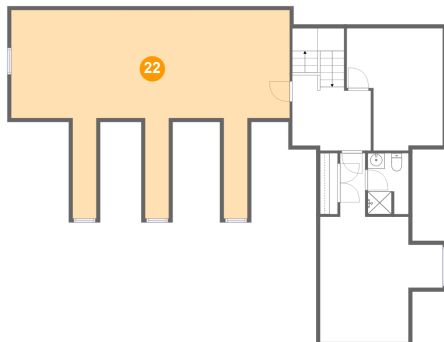
## 21 Floor 2 - Hall



Max Dimensions: 10'2" x 8'3"  
Calculated Area: 127 sq. ft  
Included: Yes

Heated: Yes  
Finished: Yes  
Enclosed: Yes  
Contiguous: Yes  
Permitted: Yes  
Wet space: No  
Addition: No  
Conversion: No

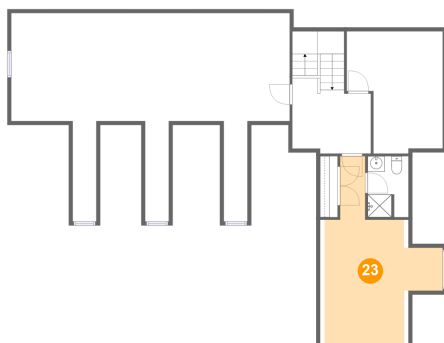
## 22 Floor 2 - Attic



Max Dimensions: 35'11" x 26'11"  
Calculated Area: 620 sq. ft  
Included: No

Heated: No  
Finished: No  
Enclosed: Yes  
Contiguous: Yes  
Permitted: Yes  
Wet space: No  
Addition: No  
Conversion: No

## 23 Floor 2 - Bedroom

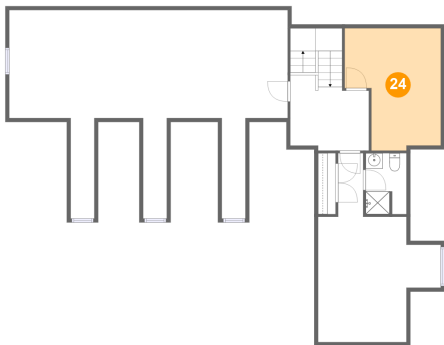


Max Dimensions: 15'10" x 24'5"  
Calculated Area: 221 sq. ft  
Included: Yes

Heated: Yes  
Finished: Yes  
Enclosed: Yes  
Contiguous: Yes  
Permitted: Yes  
Wet space: No  
Addition: No  
Conversion: No

11019 Vogel Court, North Chesterfield, Chesterfield County,  
Virginia, United States, 23236

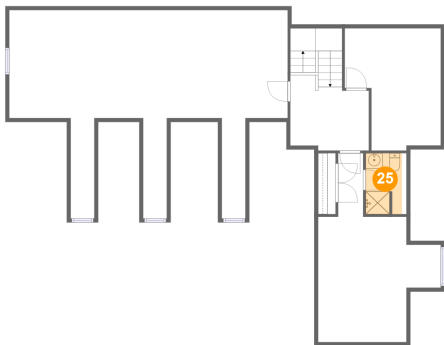
24 Floor 2 - Electrical Room



Max Dimensions: 12'5" x 15'9"  
Calculated Area: 165 sq. ft  
Included: No

Heated: No  
Finished: No  
Enclosed: Yes  
Contiguous: Yes  
Permitted: Yes  
Wet space: No  
Addition: No  
Conversion: No

25 Floor 2 - Bath



Max Dimensions: 5'3" x 7'10"  
Calculated Area: 36 sq. ft  
Included: Yes

Heated: Yes  
Finished: Yes  
Enclosed: Yes  
Contiguous: Yes  
Permitted: Yes  
Wet space: Yes  
Addition: No  
Conversion: No