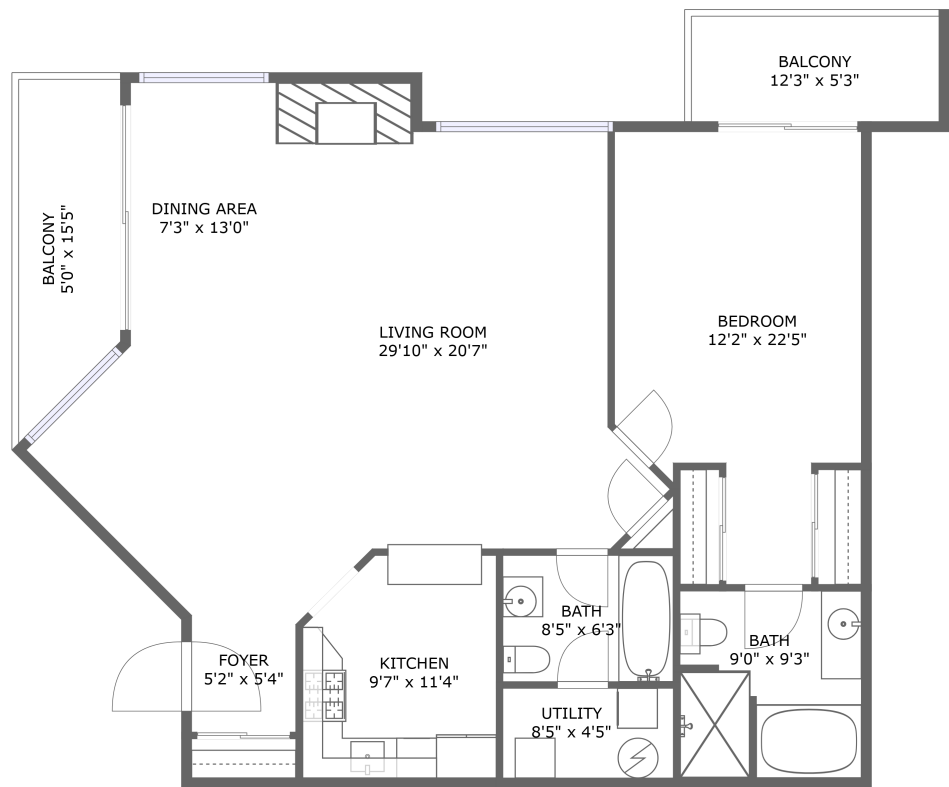



Home report


1 Harbour Close, New Haven, CT, US





FLOOR 1


Property summary


 **0** Garages


 **1** Bedrooms

 **2** Bathrooms

 **0** Half baths

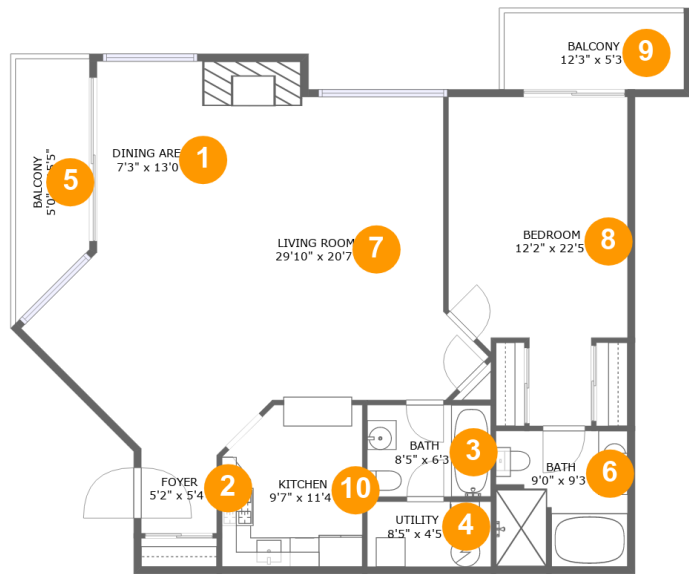
 **1** Floors

 **1,260** Gross living area sqft

 **1,402** Total sqft

Home report

1 Harbour Close, New Haven, CT, US



Room dimensions

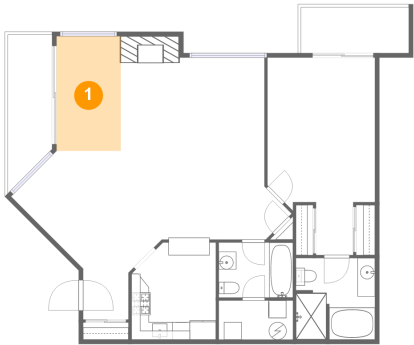
Floor 1 Total sqft: 1402 Living area: 1260

#		Dimensions	sqft	Counted as living area
1	Dining Area	7'3" x 13'0"	95 sq. ft	Yes
2	Foyer	5'2" x 5'4"	27 sq. ft	Yes
3	Bath	8'5" x 6'3"	53 sq. ft	Yes
4	Utility	8'5" x 4'5"	37 sq. ft	Yes
5	Balcony	5'0" x 15'5"	78 sq. ft	No
6	Bath	9'0" x 9'3"	81 sq. ft	Yes
7	Living Room	29'10" x 20'7"	493 sq. ft	Yes
8	Bedroom	12'2" x 22'5"	224 sq. ft	Yes
9	Balcony	12'3" x 5'3"	64 sq. ft	No
10	Kitchen	9'7" x 11'4"	100 sq. ft	Yes

Home report

1 Harbour Close, New Haven, CT, US

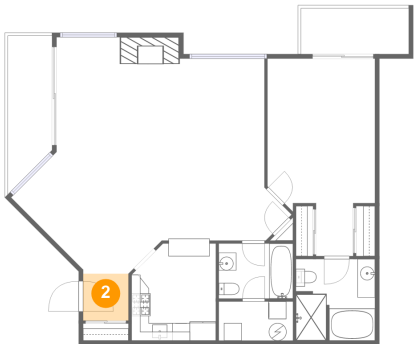
1 Floor 1 - Dining Area



Dimensions: 7'3" x 13'0"
Area: 95 sq. ft
Counted as living area: Yes

Heated: Yes
Finished: Yes
Enclosed: Yes
Contiguous: Yes
Permitted: Yes
Wet space: No
Addition: No
Conversion: No

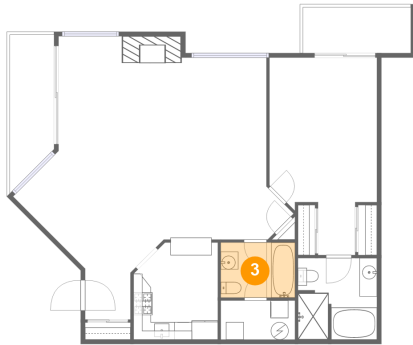
2 Floor 1 - Foyer



Dimensions: 5'2" x 5'4"
Area: 27 sq. ft
Counted as living area: Yes

Heated: Yes
Finished: Yes
Enclosed: Yes
Contiguous: Yes
Permitted: Yes
Wet space: No
Addition: No
Conversion: No

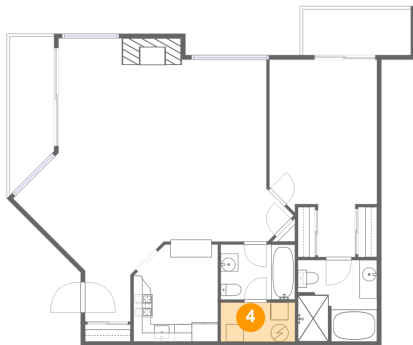
3 Floor 1 - Bath



Dimensions: 8'5" x 6'3"
Area: 53 sq. ft
Counted as living area: Yes

Heated: Yes
Finished: Yes
Enclosed: Yes
Contiguous: Yes
Permitted: Yes
Wet space: Yes
Addition: No
Conversion: No

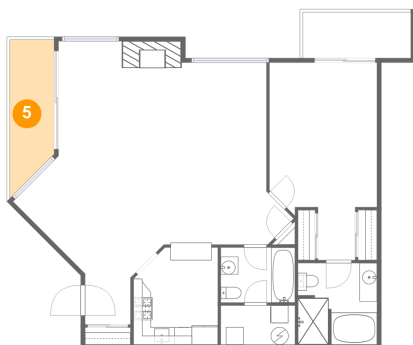
4 Floor 1 - Utility



Dimensions: 8'5" x 4'5"
Area: 37 sq. ft
Counted as living area: Yes

Heated: Yes
Finished: Yes
Enclosed: Yes
Contiguous: Yes
Permitted: Yes
Wet space: No
Addition: No
Conversion: No

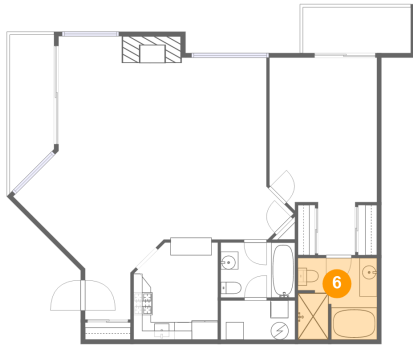
5 Floor 1 - Balcony



Dimensions: 5'0" x 15'5"
Area: 78 sq. ft
Counted as living area: No

Heated: No
Finished: Yes
Enclosed: No
Contiguous: Yes
Permitted: Yes
Wet space: No
Addition: No
Conversion: No

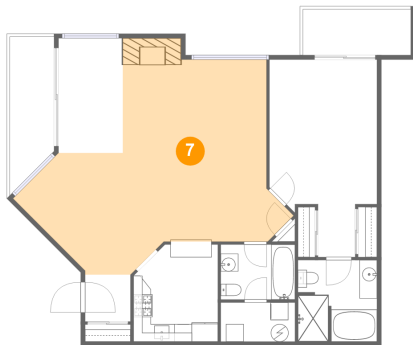
6 Floor 1 - Bath



Dimensions: 9'0" x 9'3"
Area: 81 sq. ft
Counted as living area: Yes

Heated: Yes
Finished: Yes
Enclosed: Yes
Contiguous: Yes
Permitted: Yes
Wet space: Yes
Addition: No
Conversion: No

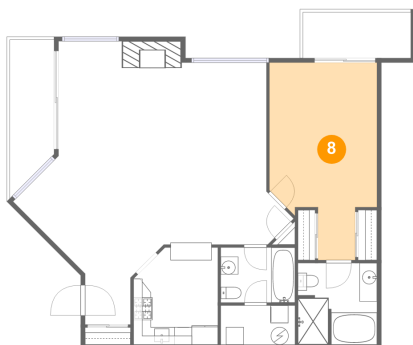
7 Floor 1 - Living Room



Dimensions: 29'10" x 20'7"
Area: 493 sq. ft
Counted as living area: Yes

Heated: Yes
Finished: Yes
Enclosed: Yes
Contiguous: Yes
Permitted: Yes
Wet space: No
Addition: No
Conversion: No

8 Floor 1 - Bedroom



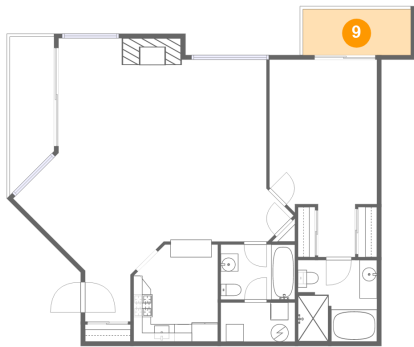
Dimensions: 12'2" x 22'5"
Area: 224 sq. ft
Counted as living area: Yes

Heated: Yes
Finished: Yes
Enclosed: Yes
Contiguous: Yes
Permitted: Yes
Wet space: No
Addition: No
Conversion: No

Home report

1 Harbour Close, New Haven, CT, US

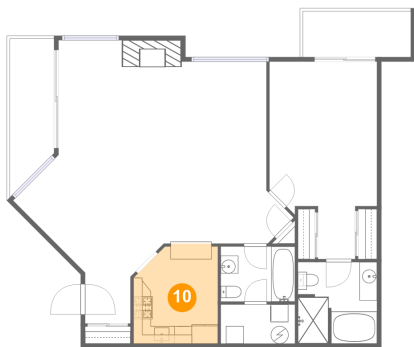
9 Floor 1 - Balcony



Dimensions: 12'3" x 5'3"
Area: 64 sq. ft
Counted as living area: No

Heated: No
Finished: Yes
Enclosed: No
Contiguous: Yes
Permitted: Yes
Wet space: No
Addition: No
Conversion: No

10 Floor 1 - Kitchen



Dimensions: 9'7" x 11'4"
Area: 100 sq. ft
Counted as living area: Yes

Heated: Yes
Finished: Yes
Enclosed: Yes
Contiguous: Yes
Permitted: Yes
Wet space: No
Addition: No
Conversion: No