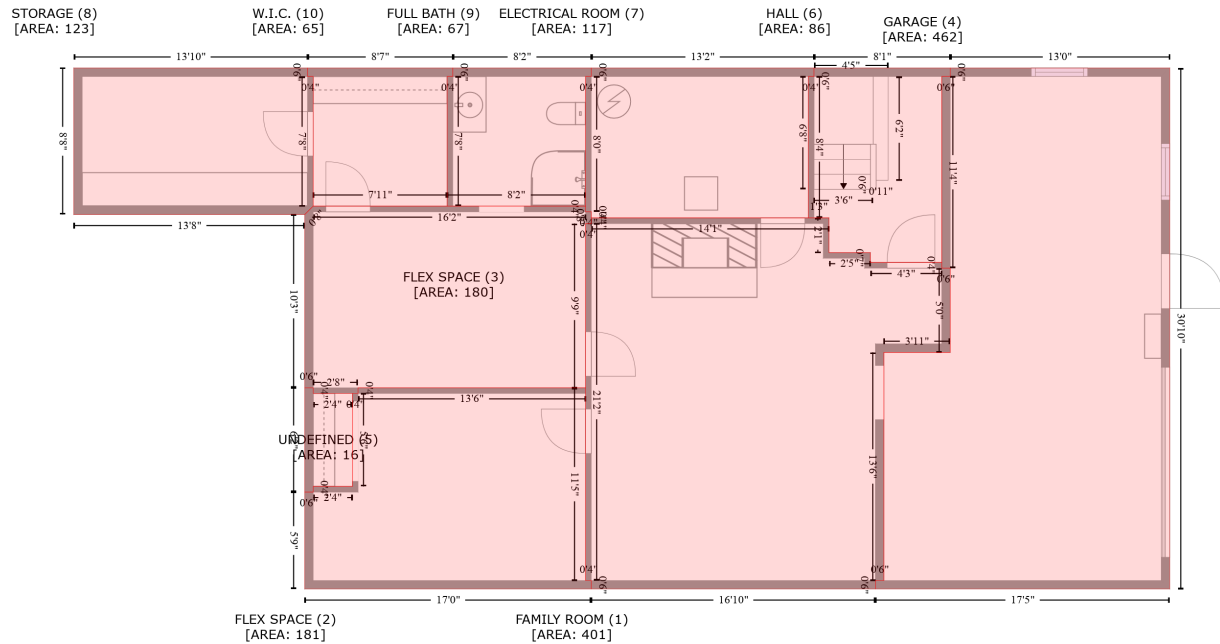


8064 Reeps Grove Church Road, Vale, Lincoln County, North Carolina, United States, 28168

Gross Living Area: 1697 sq. ft



Space	Area (sq. ft)	Calculation
FAMILY ROOM (Non-living area)	401	Coordinate Polygon Area Algorithm using inches $-((535 + 535) * (324.6 - 349.2) + (535 + 564.4) * (349.2 - 349.2) + (564.4 + 564.4) * (349.2 - 356.2) + (564.4 + 615.2) * (356.2 - 356.2) + (615.2 + 615.2) * (356.2 - 360.2) + (615.2 + 621.2) * (360.2 - 360.2) + (621.2 + 621.2) * (360.2 - 420) + (621.2 + 574) * (420 - 420) + (574 + 574) * (420 - 582.1) + (574 + 568) * (582.1 - 582.1) + (568 + 568) * (582.1 - 588.1) + (568 + 366.1) * (588.1 - 588.1) + (366.1 + 366.1) * (588.1 - 582.1) + (366.1 + 362.1) * (582.1 - 582.1) + (362.1 + 362.1) * (582.1 - 328.6) + (362.1 + 366.1) * (328.6 - 328.6) + (366.1 + 366.1) * (328.6 - 324.6) + (366.1 + 535) * (324.6 - 324.6)) * 0.5 * 0.00694$
FLEX SPACE (Non-living area)	181	$-((362.1 + 362.1) * (445.2 - 582.1) + (362.1 + 366.1) * (582.1 - 582.1) + (366.1 + 366.1) * (582.1 - 588.1) + (366.1 + 162.4) * (588.1 - 588.1) + (162.4 + 162.4) * (588.1 - 519.2) + (162.4 + 168.4) * (519.2 - 519.2) + (168.4 + 168.4) * (519.2 - 515.2) + (168.4 + 196.3) * (515.2 - 515.2) + (196.3 + 196.3) * (515.2 - 449.2) + (196.3 + 200.3) * (449.2 - 449.2) + (200.3 + 200.3) * (449.2 - 445.2) + (200.3 + 362.1) * (445.2 - 445.2)) * 0.5 * 0.00694$
FLEX SPACE (Non-living area)	180	$-((362.1 + 362.1) * (316.2 - 320.2) + (362.1 + 366.1) * (320.2 - 320.2) + (366.1 + 366.1) * (320.2 - 328.6) + (366.1 + 362.1) * (328.6 - 328.6) + (362.1 + 362.1) * (328.6 - 445.2) + (362.1 + 200.3) * (445.2 - 445.2) + (200.3 + 200.3) * (445.2 - 449.2) + (200.3 + 168.4) * (449.2 - 449.2) + (168.4 + 168.4) * (449.2 - 445.2) + (168.4 + 162.4) * (445.2 - 445.2) + (162.4 + 162.4) * (445.2 - 322.2) + (162.4 + 168.4) * (322.2 - 316.2) + (168.4 + 362.1) * (316.2 - 316.2)) * 0.5 * 0.00694$
GARAGE (Non-living area)	462	$-((777.2 + 777.2) * (218.2 - 588.1) + (777.2 + 568) * (588.1 - 588.1) + (568 + 568) * (588.1 - 582.1) + (568 + 574) * (582.1 - 582.1) + (574 + 574) * (582.1 - 420) + (574 + 621.2) * (420 - 360.2) + (621.2 + 615.2) * (360.2 - 360.2) + (615.2 + 615.2) * (360.2 - 224.2) + (615.2 + 621.2) * (224.2 - 224.2) + (621.2 + 621.2) * (224.2 - 218.2) + (621.2 + 777.2) * (218.2 - 218.2)) * 0.5 * 0.00694$
UNDEFINED (Non-living area)	16	$-((168.4 + 168.4) * (445.2 - 449.2) + (168.4 + 196.3) * (449.2 - 449.2) + (196.3 + 196.3) * (449.2 - 515.2) + (196.3 + 168.4) * (515.2 - 515.2) + (168.4 + 168.4) * (515.2 - 519.2) + (168.4 + 162.4) * (519.2 - 519.2) + (162.4 + 162.4) * (519.2 - 445.2) + (162.4 + 168.4) * (445.2 - 445.2)) * 0.5 * 0.00694$
HALL	86	$-((621.2 + 621.2) * (218.2 - 224.2) + (621.2 + 615.2) * (224.2 - 224.2) + (615.2 + 615.2) * (224.2 -$

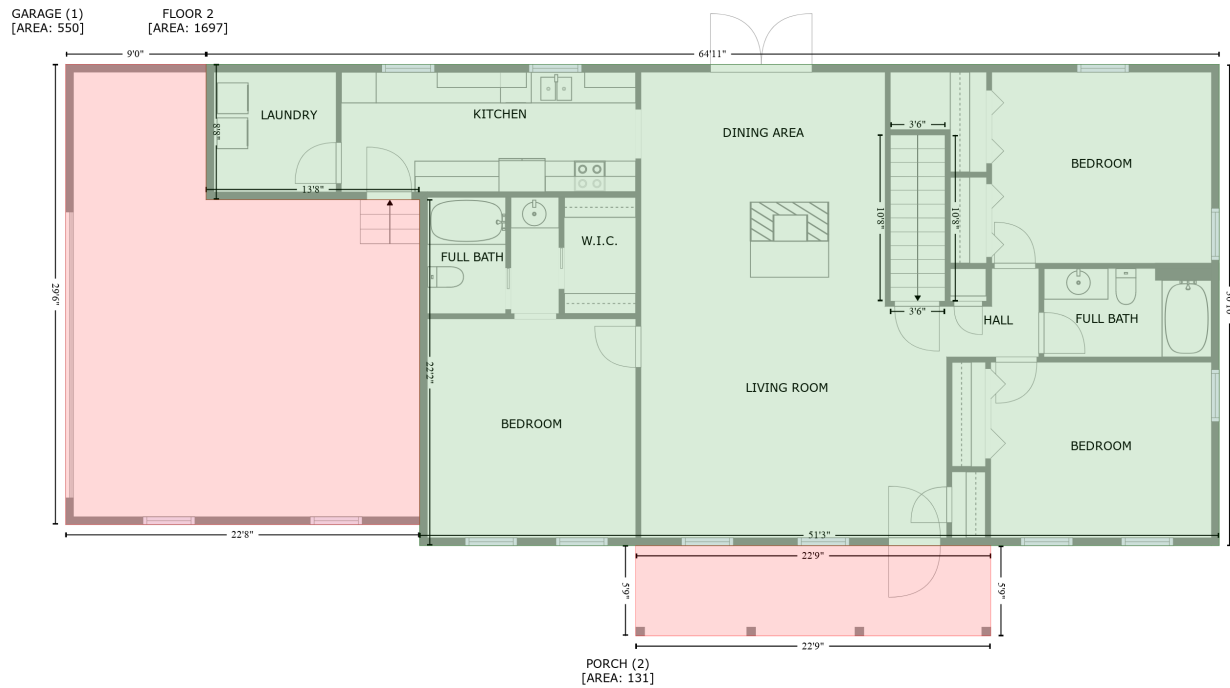
8064 Reeps Grove Church Road, Vale, Lincoln County, North Carolina, United States, 28168

Gross Living Area: 1697 sq. ft

Space	Area (sq. ft)	Calculation <small>Coordinate Polygon Area Algorithm using inches</small>
(Non-living area)		$356.2 + (615.2 + 564.4) * (356.2 - 356.2) + (564.4 + 564.4) * (356.2 - 349.2) + (564.4 + 535) * (349.2 - 349.2) + (535 + 535) * (349.2 - 324.6) + (535 + 520.3) * (324.6 - 324.6) + (520.3 + 520.3) * (324.6 - 224.2) + (520.3 + 524.3) * (224.2 - 224.2) + (524.3 + 524.3) * (224.2 - 218.2) + (524.3 + 621.2) * (218.2 - 218.2) * 0.5 * 0.00694$
ELECTRICAL ROOM (Non-living area)	117	$-((524.3 + 524.3) * (218.2 - 224.2) + (524.3 + 520.3) * (224.2 - 224.2) + (520.3 + 520.3) * (224.2 - 324.6) + (520.3 + 366.1) * (324.6 - 324.6) + (366.1 + 366.1) * (324.6 - 320.2) + (366.1 + 362.1) * (320.2 - 320.2) + (362.1 + 362.1) * (320.2 - 224.2) + (362.1 + 366.1) * (224.2 - 224.2) + (366.1 + 366.1) * (224.2 - 218.2) + (366.1 + 524.3) * (218.2 - 218.2)) * 0.5 * 0.00694$
STORAGE (Non-living area)	123	$-((164.4 + 164.4) * (218.2 - 224.2) + (164.4 + 168.4) * (224.2 - 224.2) + (168.4 + 168.4) * (224.2 - 316.2) + (168.4 + 162.4) * (316.2 - 322.2) + (162.4 + -1.7) * (322.2 - 322.2) + (-1.7 + -1.7) * (322.2 - 218.2) + (-1.7 + 164.4) * (218.2 - 218.2)) * 0.5 * 0.00694$
FULL BATH (Non-living area)	67	$-((366.1 + 366.1) * (218.2 - 224.2) + (366.1 + 362.1) * (224.2 - 224.2) + (362.1 + 362.1) * (224.2 - 316.2) + (362.1 + 263.6) * (316.2 - 316.2) + (263.6 + 263.6) * (316.2 - 224.2) + (263.6 + 267.6) * (224.2 - 224.2) + (267.6 + 267.6) * (224.2 - 218.2) + (267.6 + 366.1) * (218.2 - 218.2)) * 0.5 * 0.00694$
W.I.C. (Non-living area)	65	$-((267.6 + 267.6) * (218.2 - 224.2) + (267.6 + 263.6) * (224.2 - 224.2) + (263.6 + 263.6) * (224.2 - 316.2) + (263.6 + 168.4) * (316.2 - 316.2) + (168.4 + 168.4) * (316.2 - 224.2) + (168.4 + 164.4) * (224.2 - 224.2) + (164.4 + 164.4) * (224.2 - 218.2) + (164.4 + 267.6) * (218.2 - 218.2)) * 0.5 * 0.00694$

8064 Reeps Grove Church Road, Vale, Lincoln County, North Carolina, United States, 28168

Gross Living Area: 1697 sq. ft



Space	Area (sq. ft)	Calculation
FLOOR 2 (Living area)	1697	$-\left((800.9 + 800.9) * (228.7 - 598.6) + (800.9 + 186.1) * (598.6 - 598.6) + (186.1 + 186.1) * (598.6 - 332.8) + (186.1 + 22) * (332.8 - 332.8) + (22 + 22) * (332.8 - 228.7) + (22 + 800.9) * (228.7 - 228.7)\right) * 0.5 * 0.00694$
GARAGE (Non-living area)	550	$-\left((22 + 22) * (228.7 - 332.8) + (22 + 186.1) * (332.8 - 332.8) + (186.1 + 186.1) * (332.8 - 582.5) + (186.1 + -85.9) * (582.5 - 582.5) + (-85.9 + -85.9) * (582.5 - 228.7) + (-85.9 + 22) * (228.7 - 228.7)\right) * 0.5 * 0.00694$
PORCH (Non-living area)	131	$-\left((625.2 + 625.2) * (598.6 - 668) + (625.2 + 352.3) * (668 - 668) + (352.3 + 352.3) * (668 - 598.6) + (352.3 + 625.2) * (598.6 - 598.6)\right) * 0.5 * 0.00694$