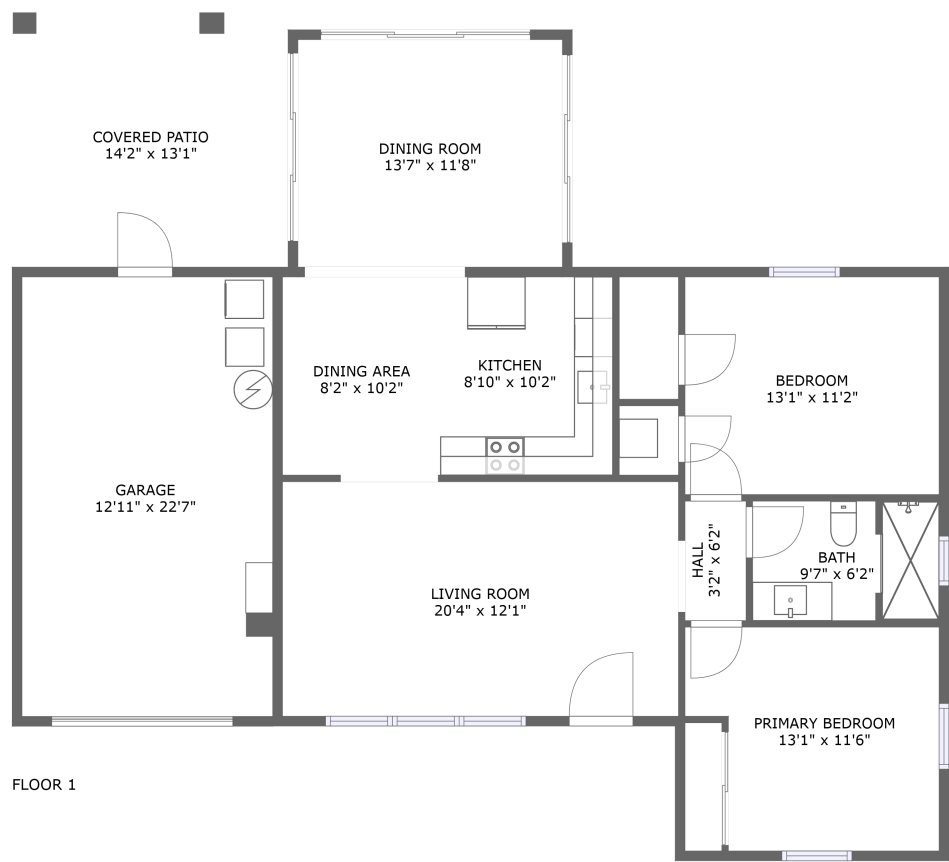


Home report

3126 Downing Street, Historic Bayview, Clearwater, Pinellas
County, Florida, United States, 33759



Total Area: 1019 sq. ft

Floor 1: 1019 sq. ft

Excluded: Garage 291 sq. ft, Covered patio 186 sq. ft, Walls: 102 sq. ft

Property summary

 **1** Floors

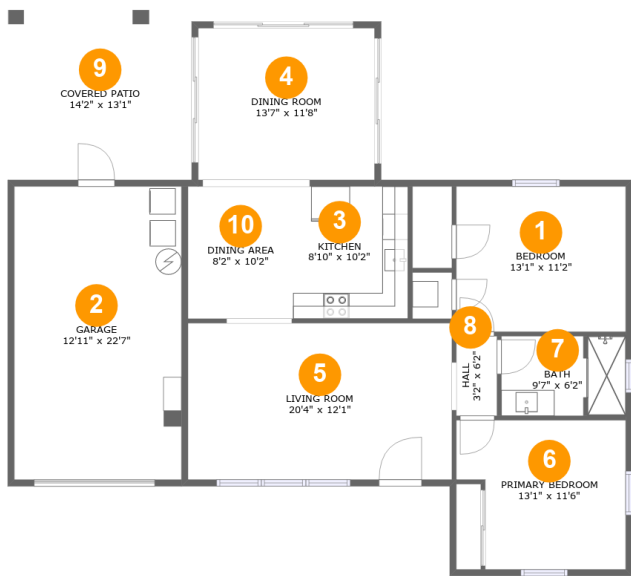
 **2** Bedrooms

 **1** Bathrooms

 **1** Garages

Home report

3126 Downing Street, Historic Bayview, Clearwater, Pinellas County, Florida, United States, 33759



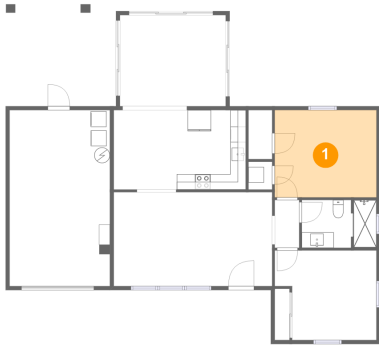
Room dimensions

Floor 1 Total:1019sqft Excluded: 477sqft

#		Max Dimensions	sqft	Included
1	Bedroom	13'1" x 11'2"	146 sq. ft	Yes
2	Garage	12'11" x 22'7"	291 sq. ft	No
3	Kitchen	8'10" x 10'2"	90 sq. ft	Yes
4	Dining Room	13'7" x 11'8"	159 sq. ft	Yes
5	Living Room	20'4" x 12'1"	246 sq. ft	Yes
6	Primary Bedroom	13'1" x 11'6"	135 sq. ft	Yes
7	Bath	9'7" x 6'2"	58 sq. ft	Yes
8	Hall	3'2" x 6'2"	19 sq. ft	Yes
9	Covered Patio	14'2" x 13'1"	186 sq. ft	No
10	Dining Area	8'2" x 10'2"	83 sq. ft	Yes

**3126 Downing Street, Historic Bayview, Clearwater, Pinellas
County, Florida, United States, 33759**

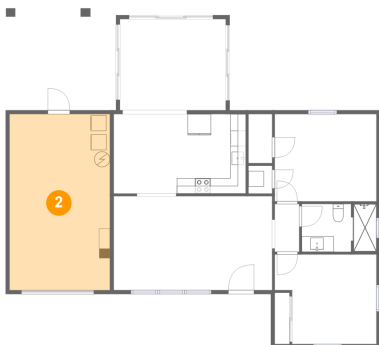
1 Floor 1 - Bedroom



Max Dimensions: 13'1" x 11'2"
Calculated Area: 146 sq. ft
Included: Yes

Heated: Yes
Finished: Yes
Enclosed: Yes
Contiguous: Yes
Permitted: Yes
Wet space: No
Addition: No
Conversion: No

2 Floor 1 - Garage

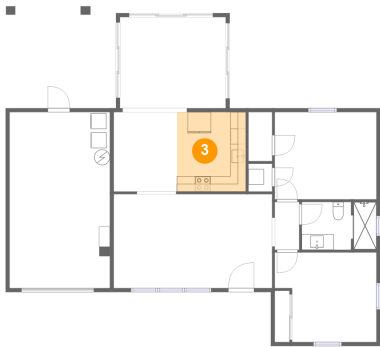


Max Dimensions: 12'11" x 22'7"
Calculated Area: 291 sq. ft
Included: No

Heated: No
Finished: No
Enclosed: Yes
Contiguous: Yes
Permitted: Yes
Wet space: No
Addition: No
Conversion: No

3126 Downing Street, Historic Bayview, Clearwater, Pinellas
County, Florida, United States, 33759

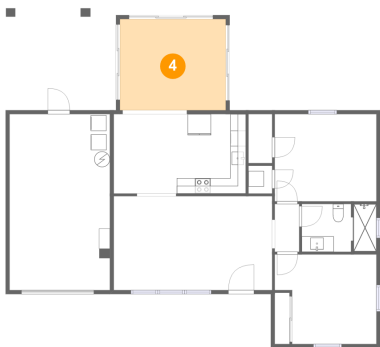
3 Floor 1 - Kitchen



Max Dimensions: 8'10" x 10'2"
Calculated Area: 90 sq. ft
Included: Yes

Heated: Yes
Finished: Yes
Enclosed: Yes
Contiguous: Yes
Permitted: Yes
Wet space: No
Addition: No
Conversion: No

4 Floor 1 - Dining Room



Max Dimensions: 13'7" x 11'8"
Calculated Area: 159 sq. ft
Included: Yes

Heated: Yes
Finished: Yes
Enclosed: Yes
Contiguous: Yes
Permitted: Yes
Wet space: No
Addition: No
Conversion: No

5 Floor 1 - Living Room

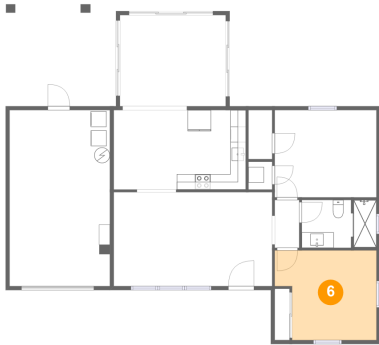


Max Dimensions: 20'4" x 12'1"
Calculated Area: 246 sq. ft
Included: Yes

Heated: Yes
Finished: Yes
Enclosed: Yes
Contiguous: Yes
Permitted: Yes
Wet space: No
Addition: No
Conversion: No

3126 Downing Street, Historic Bayview, Clearwater, Pinellas
County, Florida, United States, 33759

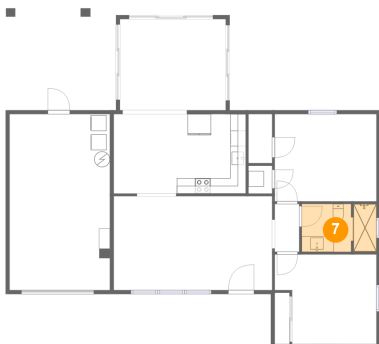
6 Floor 1 - Primary Bedroom



Max Dimensions: 13'1" x 11'6"
Calculated Area: 135 sq. ft
Included: Yes

Heated: Yes
Finished: Yes
Enclosed: Yes
Contiguous: Yes
Permitted: Yes
Wet space: No
Addition: No
Conversion: No

7 Floor 1 - Bath



Max Dimensions: 9'7" x 6'2"
Calculated Area: 58 sq. ft
Included: Yes

Heated: Yes
Finished: Yes
Enclosed: Yes
Contiguous: Yes
Permitted: Yes
Wet space: Yes
Addition: No
Conversion: No

8 Floor 1 - Hall

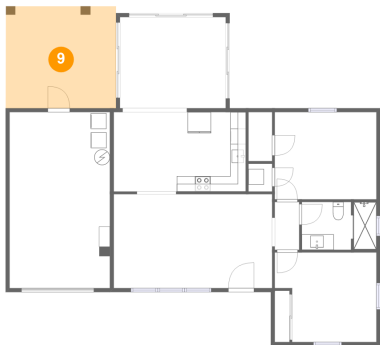


Max Dimensions: 3'2" x 6'2"
Calculated Area: 19 sq. ft
Included: Yes

Heated: Yes
Finished: Yes
Enclosed: Yes
Contiguous: Yes
Permitted: Yes
Wet space: No
Addition: No
Conversion: No

3126 Downing Street, Historic Bayview, Clearwater, Pinellas
County, Florida, United States, 33759

9 Floor 1 - Covered Patio



Max Dimensions: 14'2" x 13'1"
Calculated Area: 186 sq. ft
Included: No

Heated: No
Finished: Yes
Enclosed: No
Contiguous: Yes
Permitted: Yes
Wet space: No
Addition: No
Conversion: No

10 Floor 1 - Dining Area



Max Dimensions: 8'2" x 10'2"
Calculated Area: 83 sq. ft
Included: Yes

Heated: Yes
Finished: Yes
Enclosed: Yes
Contiguous: Yes
Permitted: Yes
Wet space: No
Addition: No
Conversion: No