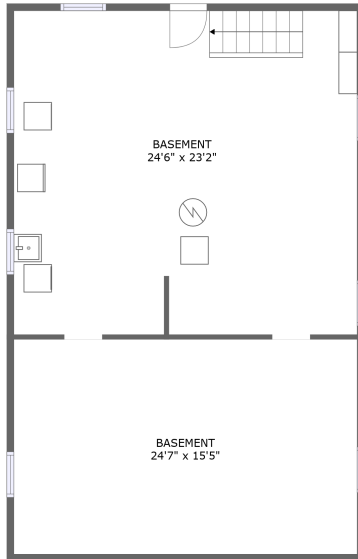
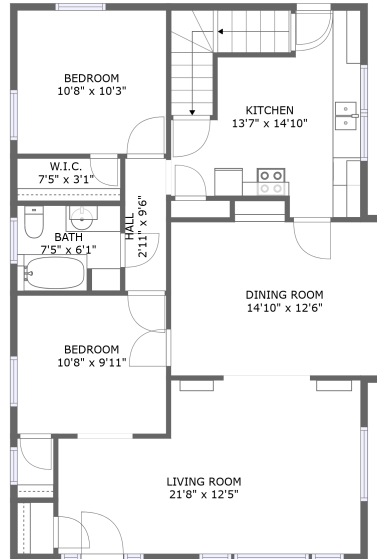


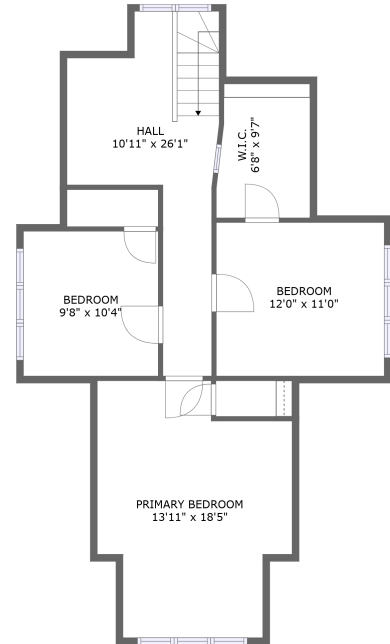
716 N Alberta St, Portland, OR, US



FLOOR 1



FLOOR 2



FLOOR 3

Property summary

 **0** Garages

 **5** Bedrooms

 **1** Bathrooms

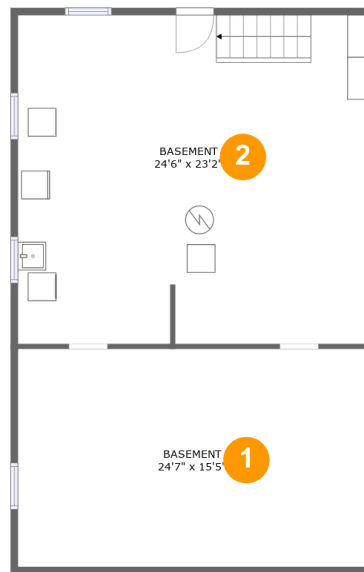
 **0** Half baths

 **3** Floors

 **1,803** Gross living area sqft

 **2,861** Total sqft

716 N Alberta St,Portland,OR,US



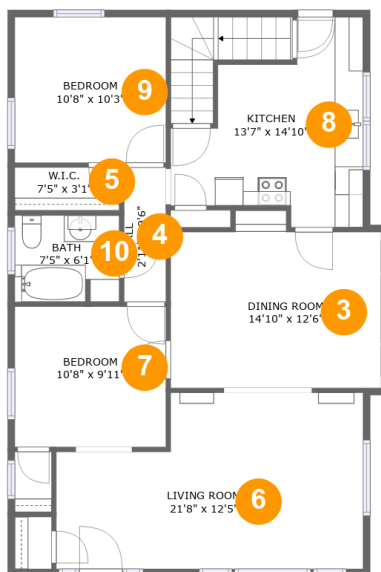
Room dimensions

Floor 1

Total sqft: 1021

Living area: 0

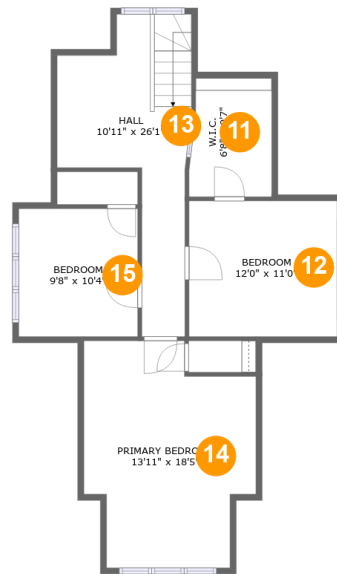
#		Dimensions	sqft	Counted as living area
1	Basement	24'7" x 15'5"	378 sq. ft	No
2	Basement	24'6" x 23'2"	569 sq. ft	No

716 N Alberta St,Portland,OR,US**Room dimensions**

Floor 2

Total sqft: 1036 Living area: 1036

#		Dimensions	sqft	Counted as living area
3	Dining Room	14'10" x 12'6"	169 sq. ft	Yes
4	Hall	2'11" x 9'6"	28 sq. ft	Yes
5	W.I.C.	7'5" x 3'1"	22 sq. ft	Yes
6	Living Room	21'8" x 12'5"	235 sq. ft	Yes
7	Bedroom	10'8" x 9'11"	106 sq. ft	Yes
8	Kitchen	13'7" x 14'10"	143 sq. ft	Yes
9	Bedroom	10'8" x 10'3"	109 sq. ft	Yes
10	Bath	7'5" x 6'1"	44 sq. ft	Yes

716 N Alberta St,Portland,OR,US

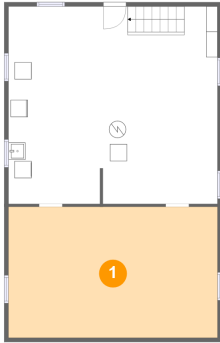
Room dimensions

Floor 3

Total sqft: 804 Living area: 767

#		Dimensions	sqft	Counted as living area
11	W.I.C.	6'8" x 9'7"	51 sq. ft	Yes
12	Bedroom	12'0" x 11'0"	132 sq. ft	Yes
13	Hall	10'11" x 26'1"	153 sq. ft	Yes
14	Primary Bedroom	13'11" x 18'5"	216 sq. ft	Yes
15	Bedroom	9'8" x 10'4"	100 sq. ft	Yes

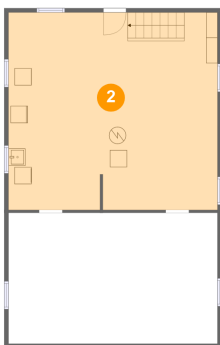
1 Floor 1 - Basement



Dimensions: 24'7" x 15'5"
Area: 378 sq. ft
Counted as living area: No

Heated: Yes
Finished: No
Enclosed: Yes
Contiguous: Yes
Permitted: Yes
Wet space: No
Addition: No
Conversion: No

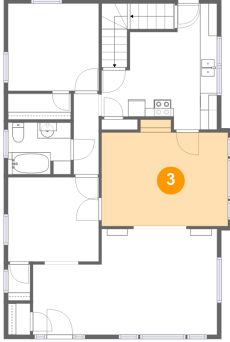
2 Floor 1 - Basement



Dimensions: 24'6" x 23'2"
Area: 569 sq. ft
Counted as living area: No

Heated: Yes
Finished: No
Enclosed: Yes
Contiguous: Yes
Permitted: Yes
Wet space: No
Addition: No
Conversion: No

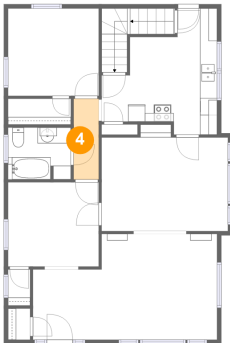
3 Floor 2 - Dining Room



Dimensions: 14'10" x 12'6"
Area: 169 sq. ft
Counted as living area: Yes

Heated: Yes
Finished: Yes
Enclosed: Yes
Contiguous: Yes
Permitted: Yes
Wet space: No
Addition: No
Conversion: No

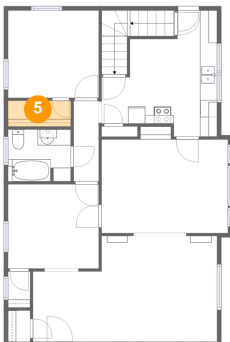
4 Floor 2 - Hall



Dimensions: 2'11" x 9'6"
Area: 28 sq. ft
Counted as living area: Yes

Heated: Yes
Finished: Yes
Enclosed: Yes
Contiguous: Yes
Permitted: Yes
Wet space: No
Addition: No
Conversion: No

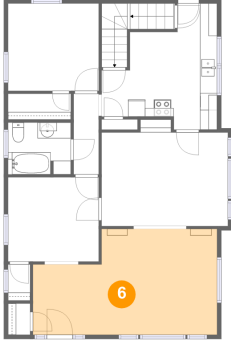
5 Floor 2 - W.I.C.



Dimensions: 7'5" x 3'1"
Area: 22 sq. ft
Counted as living area: Yes

Heated: Yes
Finished: Yes
Enclosed: Yes
Contiguous: Yes
Permitted: Yes
Wet space: No
Addition: No
Conversion: No

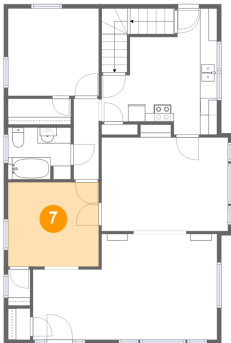
6 Floor 2 - Living Room



Dimensions: 21'8" x 12'5"
Area: 235 sq. ft
Counted as living area: Yes

Heated: Yes
Finished: Yes
Enclosed: Yes
Contiguous: Yes
Permitted: Yes
Wet space: No
Addition: No
Conversion: No

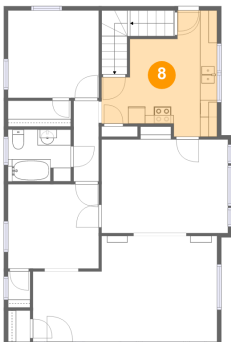
7 Floor 2 - Bedroom



Dimensions: 10'8" x 9'11"
Area: 106 sq. ft
Counted as living area: Yes

Heated: Yes
Finished: Yes
Enclosed: Yes
Contiguous: Yes
Permitted: Yes
Wet space: No
Addition: No
Conversion: No

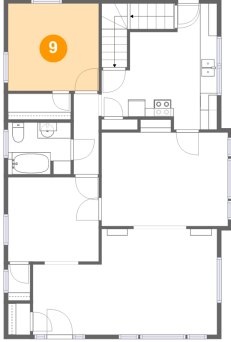
8 Floor 2 - Kitchen



Dimensions: 13'7" x 14'10"
Area: 143 sq. ft
Counted as living area: Yes

Heated: Yes
Finished: Yes
Enclosed: Yes
Contiguous: Yes
Permitted: Yes
Wet space: No
Addition: No
Conversion: No

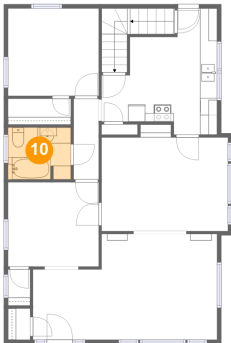
9 Floor 2 - Bedroom



Dimensions: 10'8" x 10'3"
Area: 109 sq. ft
Counted as living area: Yes

Heated: Yes
Finished: Yes
Enclosed: Yes
Contiguous: Yes
Permitted: Yes
Wet space: No
Addition: No
Conversion: No

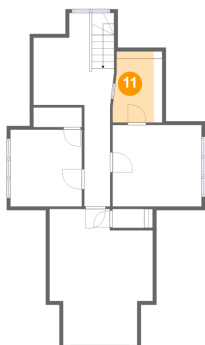
10 Floor 2 - Bath



Dimensions: 7'5" x 6'1"
Area: 44 sq. ft
Counted as living area: Yes

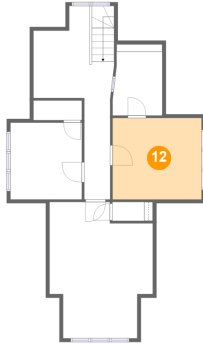
Heated: Yes
Finished: Yes
Enclosed: Yes
Contiguous: Yes
Permitted: Yes
Wet space: Yes
Addition: No
Conversion: No

11 Floor 3 - W.I.C.



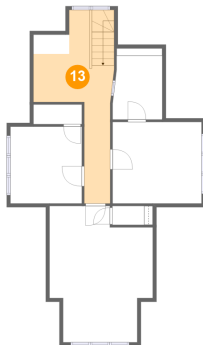
Dimensions: 6'8" x 9'7"
Area: 51 sq. ft
Counted as living area: Yes

Heated: Yes
Finished: Yes
Enclosed: Yes
Contiguous: Yes
Permitted: Yes
Wet space: No
Addition: No
Conversion: No

12 Floor 3 - Bedroom

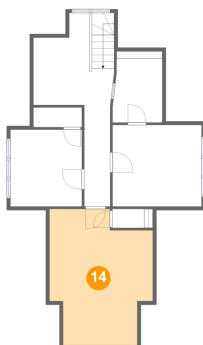
Dimensions: 12'0" x 11'0"
Area: 132 sq. ft
Counted as living area: Yes

Heated: Yes
Finished: Yes
Enclosed: Yes
Contiguous: Yes
Permitted: Yes
Wet space: No
Addition: No
Conversion: No

13 Floor 3 - Hall

Dimensions: 10'11" x 26'1"
Area: 153 sq. ft
Counted as living area: Yes

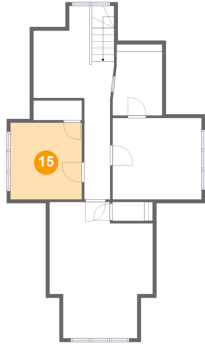
Heated: Yes
Finished: Yes
Enclosed: Yes
Contiguous: Yes
Permitted: Yes
Wet space: No
Addition: No
Conversion: No

14 Floor 3 - Primary Bedroom

Dimensions: 13'11" x 18'5"
Area: 216 sq. ft
Counted as living area: Yes

Heated: Yes
Finished: Yes
Enclosed: Yes
Contiguous: Yes
Permitted: Yes
Wet space: No
Addition: No
Conversion: No

15 Floor 3 - Bedroom



Dimensions: 9'8" x 10'4"
Area: 100 sq. ft
Counted as living area: Yes

Heated: Yes
Finished: Yes
Enclosed: Yes
Contiguous: Yes
Permitted: Yes
Wet space: No
Addition: No
Conversion: No