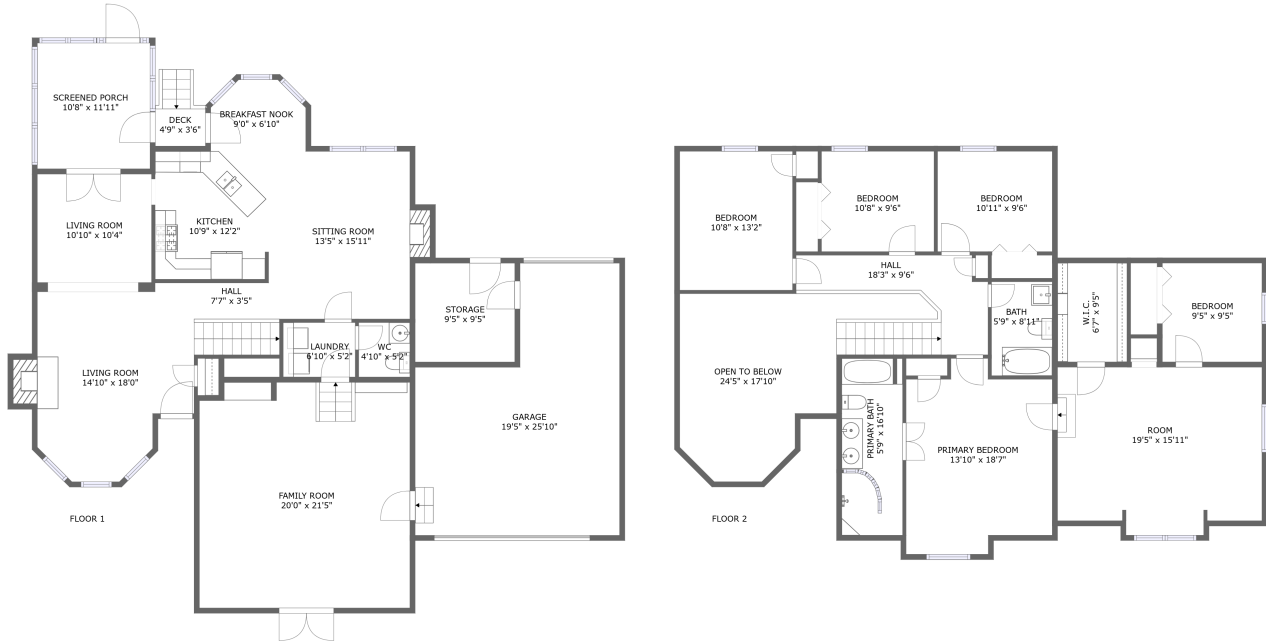



6002 Pleasant Pond Place, Chesterfield, Chesterfield County, Virginia, United States, 23832



Property summary

 **1** Garages

 **5** Bedrooms

 **2** Bathrooms

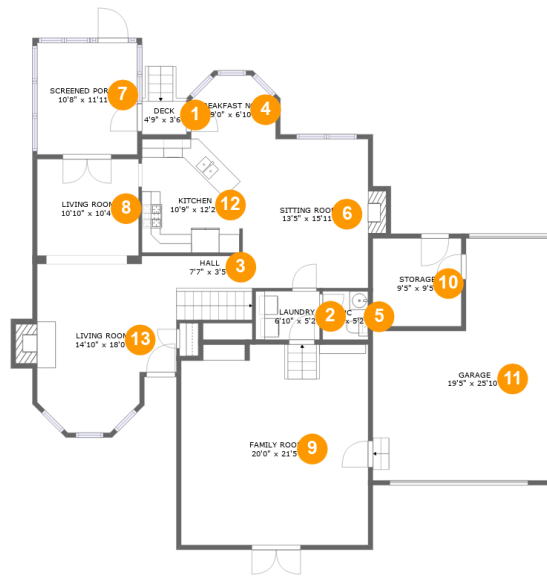
 **1** Half baths

 **2** Floors

 **2,900** Gross living area sqft

 **3,931** Total sqft

6002 Pleasant Pond Place, Chesterfield, Chesterfield County, Virginia, United States, 23832



Room dimensions

Floor 1

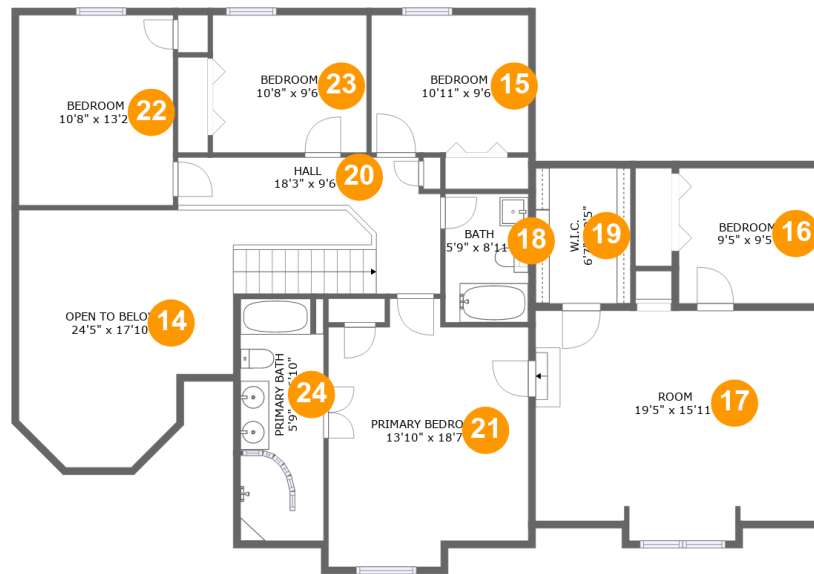
Total sqft: 2148 Living area: 1440

#		Dimensions	sqft	Counted as living area
1	Deck	4'9" x 3'6"	17 sq. ft	No
2	Laundry	6'10" x 5'2"	35 sq. ft	Yes
3	Hall	7'7" x 3'5"	54 sq. ft	Yes
4	Breakfast Nook	9'0" x 6'10"	54 sq. ft	Yes
5	WC	4'10" x 5'2"	25 sq. ft	Yes
6	Sitting Room	13'5" x 15'11"	220 sq. ft	Yes
7	Screened Porch	10'8" x 11'11"	128 sq. ft	No
8	Living Room	10'10" x 10'4"	112 sq. ft	Yes
9	Family Room	20'0" x 21'5"	423 sq. ft	Yes
10	Storage	9'5" x 9'5"	89 sq. ft	No
11	Garage	19'5" x 25'10"	403 sq. ft	No

**6002 Pleasant Pond Place, Chesterfield, Chesterfield
County, Virginia, United States, 23832**

#		Dimensions	sqft	Counted as living area
12	Kitchen	10'9" x 12'2"	130 sq. ft	Yes
13	Living Room	14'10" x 18'0"	245 sq. ft	Yes

6002 Pleasant Pond Place, Chesterfield, Chesterfield County, Virginia, United States, 23832



Room dimensions

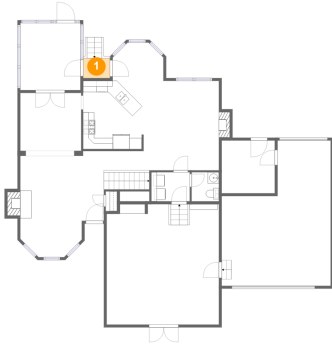
Floor 2

Total sqft: 1783 Living area: 1460

#		Dimensions	sqft	Counted as living area
14	Open To Below	24'5" x 17'10"	251 sq. ft	No
15	Bedroom	10'11" x 9'6"	104 sq. ft	Yes
16	Bedroom	9'5" x 9'5"	89 sq. ft	Yes
17	Room	19'5" x 15'11"	246 sq. ft	Yes
18	Bath	5'9" x 8'11"	51 sq. ft	Yes
19	W.I.C.	6'7" x 9'5"	62 sq. ft	Yes
20	Hall	18'3" x 9'6"	125 sq. ft	Yes
21	Primary Bedroom	13'10" x 18'7"	227 sq. ft	Yes
22	Bedroom	10'8" x 13'2"	141 sq. ft	Yes
23	Bedroom	10'8" x 9'6"	102 sq. ft	Yes
24	Primary Bath	5'9" x 16'10"	94 sq. ft	Yes

6002 Pleasant Pond Place, Chesterfield, Chesterfield County, Virginia, United States, 23832

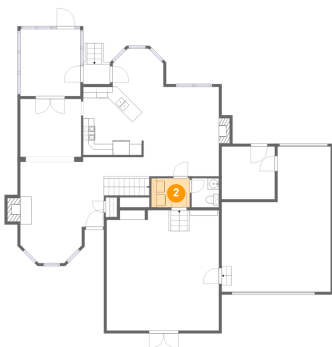
1 Floor 1 - Deck



Dimensions: 4'9" x 3'6"
Area: 17 sq. ft
Counted as living area: No

Heated: No
Finished: Yes
Enclosed: No
Contiguous: Yes
Permitted: Yes
Wet space: No
Addition: No
Conversion: No

2 Floor 1 - Laundry

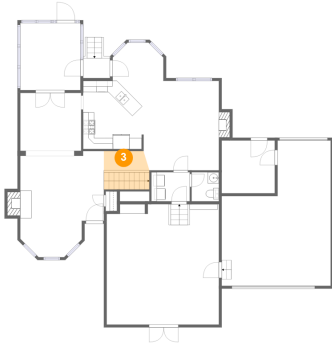


Dimensions: 6'10" x 5'2"
Area: 35 sq. ft
Counted as living area: Yes

Heated: Yes
Finished: Yes
Enclosed: Yes
Contiguous: Yes
Permitted: Yes
Wet space: No
Addition: No
Conversion: No

6002 Pleasant Pond Place, Chesterfield, Chesterfield County, Virginia, United States, 23832

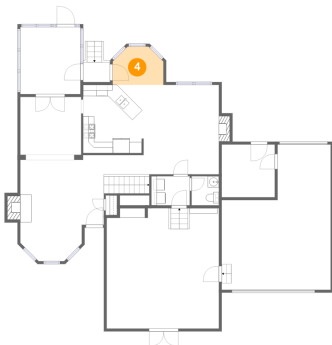
3 Floor 1 - Hall



Dimensions: 7'7" x 3'5"
Area: 54 sq. ft
Counted as living area: Yes

Heated: Yes
Finished: Yes
Enclosed: Yes
Contiguous: Yes
Permitted: Yes
Wet space: No
Addition: No
Conversion: No

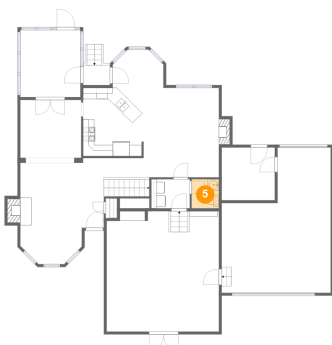
4 Floor 1 - Breakfast Nook



Dimensions: 9'0" x 6'10"
Area: 54 sq. ft
Counted as living area: Yes

Heated: Yes
Finished: Yes
Enclosed: Yes
Contiguous: Yes
Permitted: Yes
Wet space: No
Addition: No
Conversion: No

5 Floor 1 - WC

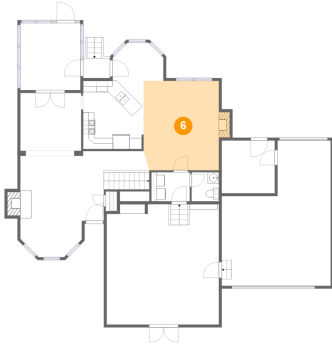


Dimensions: 4'10" x 5'2"
Area: 25 sq. ft
Counted as living area: Yes

Heated: Yes
Finished: Yes
Enclosed: Yes
Contiguous: Yes
Permitted: Yes
Wet space: Yes
Addition: No
Conversion: No

6002 Pleasant Pond Place, Chesterfield, Chesterfield County, Virginia, United States, 23832

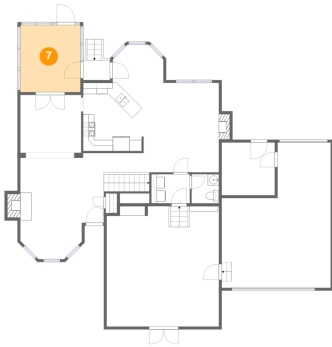
6 Floor 1 - Sitting Room



Dimensions: 13'5" x 15'11"
Area: 220 sq. ft
Counted as living area: Yes

Heated: Yes
Finished: Yes
Enclosed: Yes
Contiguous: Yes
Permitted: Yes
Wet space: No
Addition: No
Conversion: No

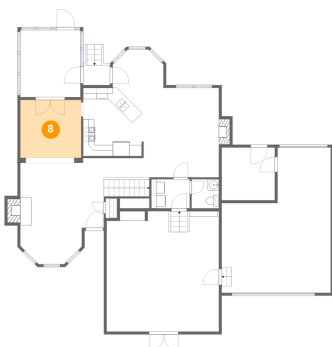
7 Floor 1 - Screened Porch



Dimensions: 10'8" x 11'11"
Area: 128 sq. ft
Counted as living area: No

Heated: No
Finished: Yes
Enclosed: No
Contiguous: Yes
Permitted: Yes
Wet space: No
Addition: No
Conversion: No

8 Floor 1 - Living Room

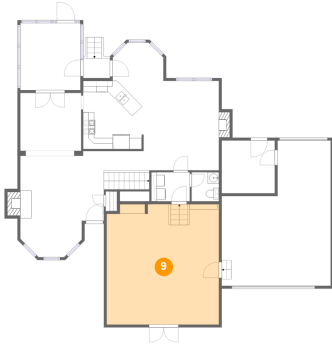


Dimensions: 10'10" x 10'4"
Area: 112 sq. ft
Counted as living area: Yes

Heated: Yes
Finished: Yes
Enclosed: Yes
Contiguous: Yes
Permitted: Yes
Wet space: No
Addition: No
Conversion: No

6002 Pleasant Pond Place, Chesterfield, Chesterfield County, Virginia, United States, 23832

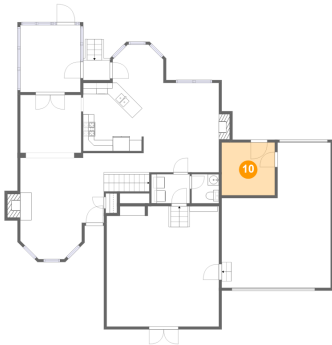
9 Floor 1 - Family Room



Dimensions: 20'0" x 21'5"
Area: 423 sq. ft
Counted as living area: Yes

Heated: Yes
Finished: Yes
Enclosed: Yes
Contiguous: Yes
Permitted: Yes
Wet space: No
Addition: No
Conversion: No

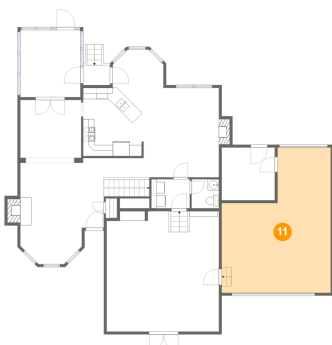
10 Floor 1 - Storage



Dimensions: 9'5" x 9'5"
Area: 89 sq. ft
Counted as living area: No

Heated: No
Finished: No
Enclosed: No
Contiguous: Yes
Permitted: Yes
Wet space: No
Addition: No
Conversion: No

11 Floor 1 - Garage

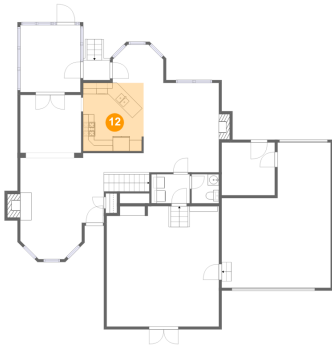


Dimensions: 19'5" x 25'10"
Area: 403 sq. ft
Counted as living area: No

Heated: No
Finished: No
Enclosed: Yes
Contiguous: Yes
Permitted: Yes
Wet space: No
Addition: No
Conversion: No

6002 Pleasant Pond Place, Chesterfield, Chesterfield County, Virginia, United States, 23832

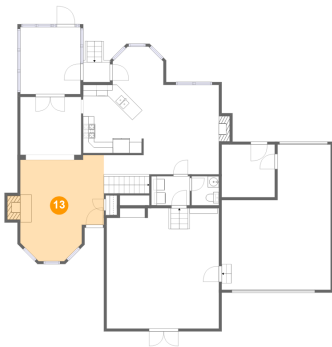
12 Floor 1 - Kitchen



Dimensions: 10'9" x 12'2"
Area: 130 sq. ft
Counted as living area: Yes

Heated: Yes
Finished: Yes
Enclosed: Yes
Contiguous: Yes
Permitted: Yes
Wet space: No
Addition: No
Conversion: No

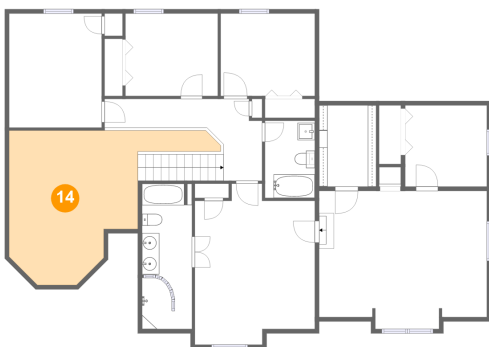
13 Floor 1 - Living Room



Dimensions: 14'10" x 18'0"
Area: 245 sq. ft
Counted as living area: Yes

Heated: Yes
Finished: Yes
Enclosed: Yes
Contiguous: Yes
Permitted: Yes
Wet space: No
Addition: No
Conversion: No

14 Floor 2 - Open To Below

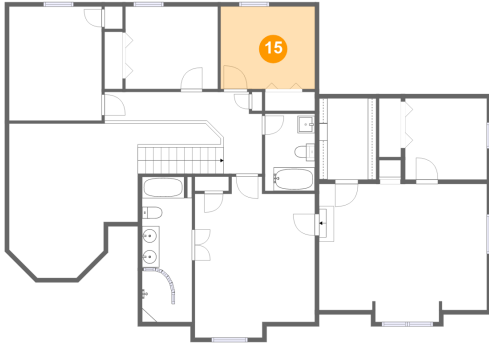


Dimensions: 24'5" x 17'10"
Area: 251 sq. ft
Counted as living area: No

Heated: No
Finished: No
Enclosed: No
Contiguous: Yes
Permitted: No
Wet space: No
Addition: No
Conversion: No

6002 Pleasant Pond Place, Chesterfield, Chesterfield County, Virginia, United States, 23832

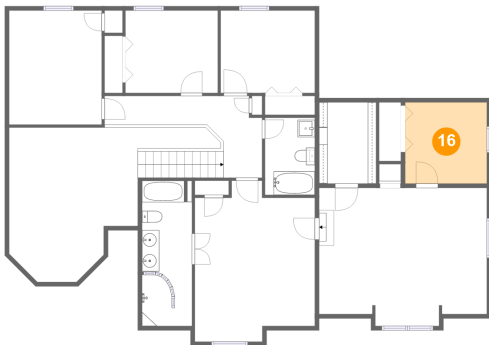
15 Floor 2 - Bedroom



Dimensions: 10'11" x 9'6"
Area: 104 sq. ft
Counted as living area: Yes

Heated: Yes
Finished: Yes
Enclosed: Yes
Contiguous: Yes
Permitted: Yes
Wet space: No
Addition: No
Conversion: No

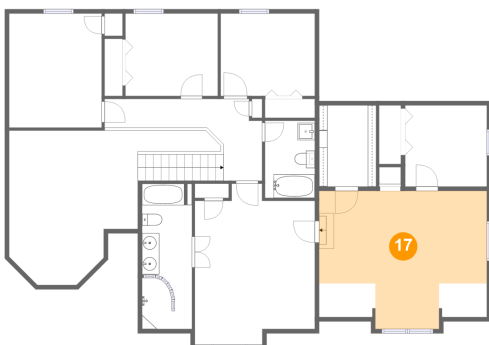
16 Floor 2 - Bedroom



Dimensions: 9'5" x 9'5"
Area: 89 sq. ft
Counted as living area: Yes

Heated: Yes
Finished: Yes
Enclosed: Yes
Contiguous: Yes
Permitted: Yes
Wet space: No
Addition: No
Conversion: No

17 Floor 2 - Room

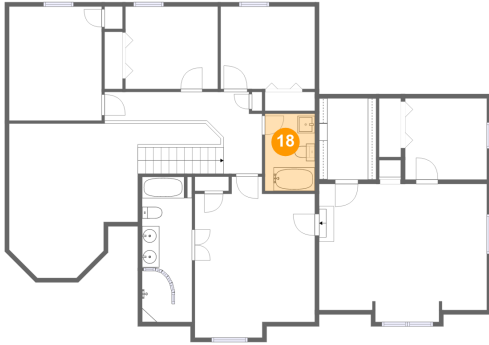


Dimensions: 19'5" x 15'11"
Area: 246 sq. ft
Counted as living area: Yes

Heated: Yes
Finished: Yes
Enclosed: Yes
Contiguous: Yes
Permitted: Yes
Wet space: No
Addition: No
Conversion: No

6002 Pleasant Pond Place, Chesterfield, Chesterfield County, Virginia, United States, 23832

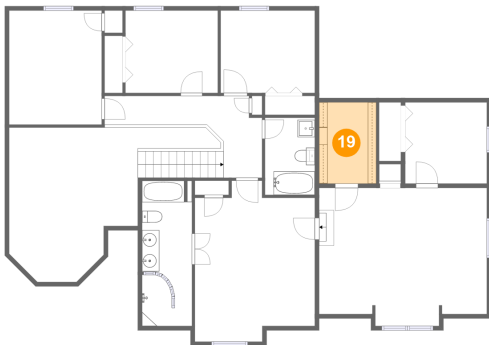
18 Floor 2 - Bath



Dimensions: 5'9" x 8'11"
Area: 51 sq. ft
Counted as living area: Yes

Heated: Yes
Finished: Yes
Enclosed: Yes
Contiguous: Yes
Permitted: Yes
Wet space: Yes
Addition: No
Conversion: No

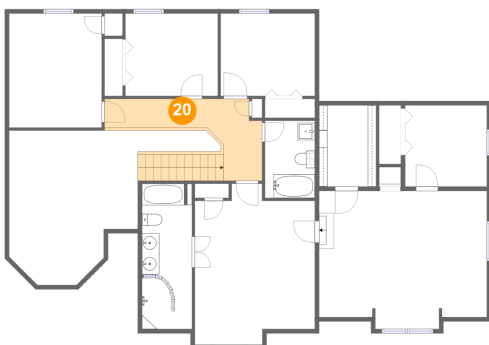
19 Floor 2 - W.I.C.



Dimensions: 6'7" x 9'5"
Area: 62 sq. ft
Counted as living area: Yes

Heated: Yes
Finished: Yes
Enclosed: Yes
Contiguous: Yes
Permitted: Yes
Wet space: No
Addition: No
Conversion: No

20 Floor 2 - Hall

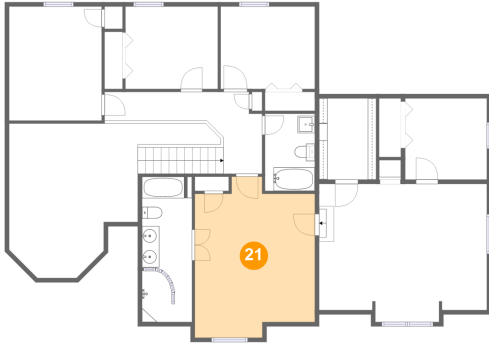


Dimensions: 18'3" x 9'6"
Area: 125 sq. ft
Counted as living area: Yes

Heated: Yes
Finished: Yes
Enclosed: Yes
Contiguous: Yes
Permitted: Yes
Wet space: No
Addition: No
Conversion: No

6002 Pleasant Pond Place, Chesterfield, Chesterfield County, Virginia, United States, 23832

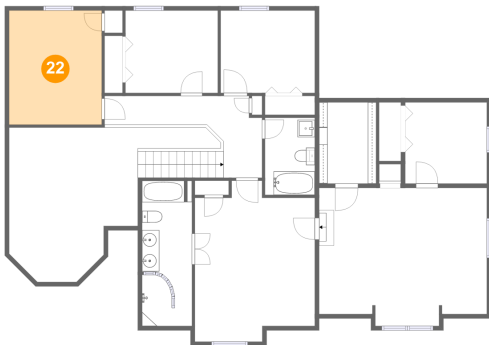
21 Floor 2 - Primary Bedroom



Dimensions: 13'10" x 18'7"
Area: 227 sq. ft
Counted as living area: Yes

Heated: Yes
Finished: Yes
Enclosed: Yes
Contiguous: Yes
Permitted: Yes
Wet space: No
Addition: No
Conversion: No

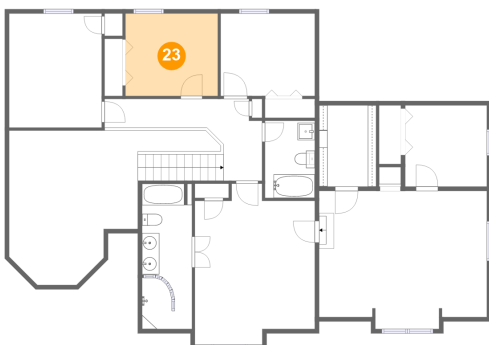
22 Floor 2 - Bedroom



Dimensions: 10'8" x 13'2"
Area: 141 sq. ft
Counted as living area: Yes

Heated: Yes
Finished: Yes
Enclosed: Yes
Contiguous: Yes
Permitted: Yes
Wet space: No
Addition: No
Conversion: No

23 Floor 2 - Bedroom

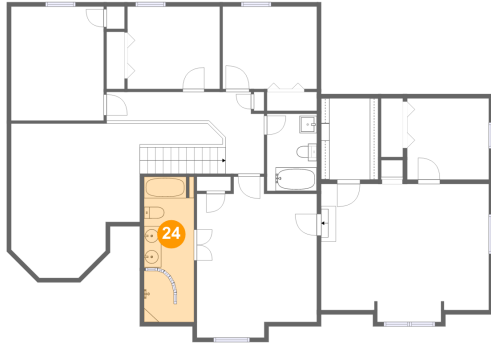


Dimensions: 10'8" x 9'6"
Area: 102 sq. ft
Counted as living area: Yes

Heated: Yes
Finished: Yes
Enclosed: Yes
Contiguous: Yes
Permitted: Yes
Wet space: No
Addition: No
Conversion: No

6002 Pleasant Pond Place, Chesterfield, Chesterfield County, Virginia, United States, 23832

24 Floor 2 - Primary Bath



Dimensions: 5'9" x 16'10"
Area: 94 sq. ft
Counted as living area: Yes

Heated: Yes
Finished: Yes
Enclosed: Yes
Contiguous: Yes
Permitted: Yes
Wet space: Yes
Addition: No
Conversion: No