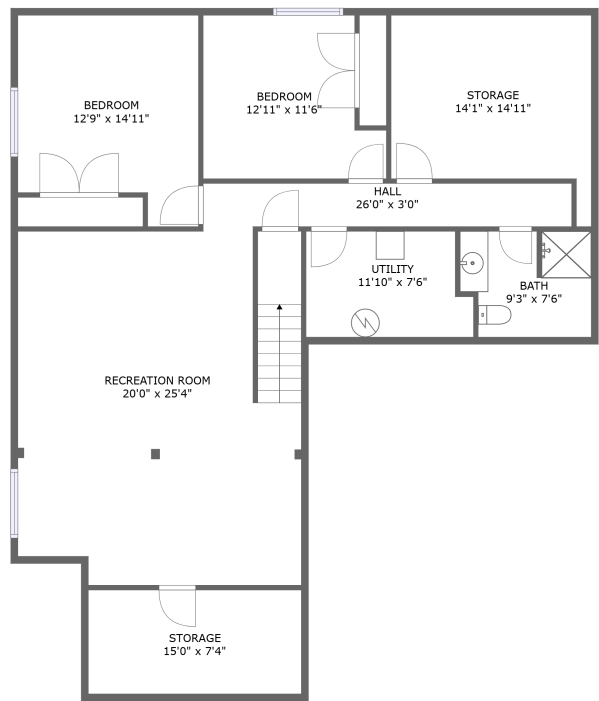
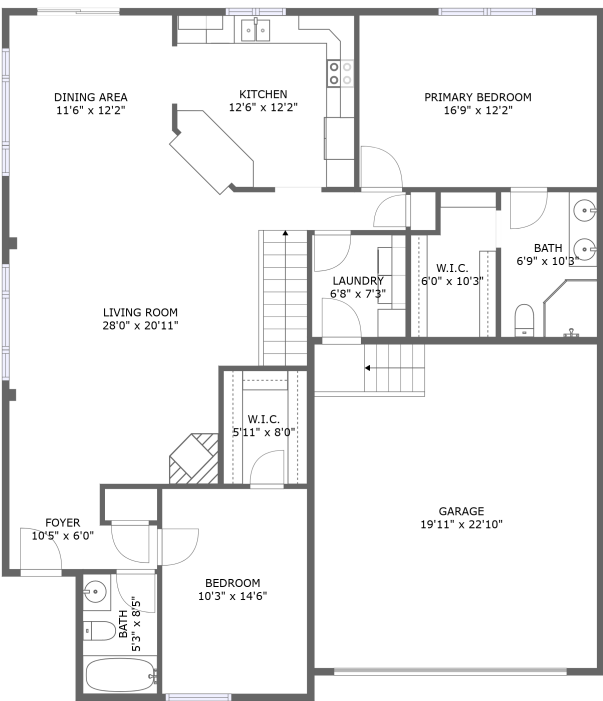


Home report

2309 5th Ave,Spearfish,SD,US



FLOOR 1




FLOOR 2


Total Area: 2440 sq. ft
Below Ground: 1015 sq. ft, Floor 2: 1425 sq. ft
Excluded: Storage 276 sq. ft, Utility 82 sq. ft, Garage 456 sq. ft, Walls: 203 sq. ft

Property summary

 **2** Floors

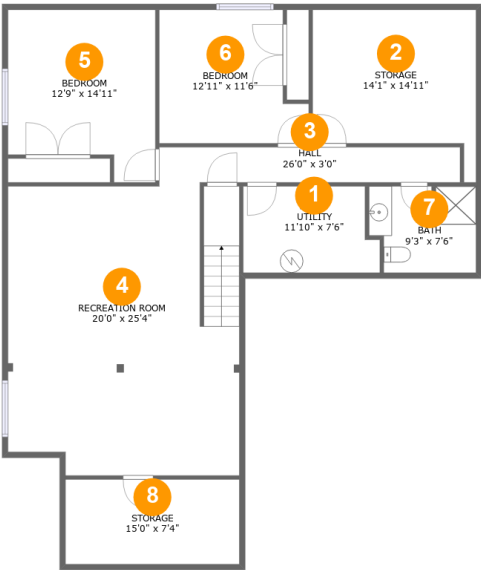
 **4** Bedrooms

 **3** Bathrooms

 **1** Garages

Home report

2309 5th Ave,Spearfish,SD,US



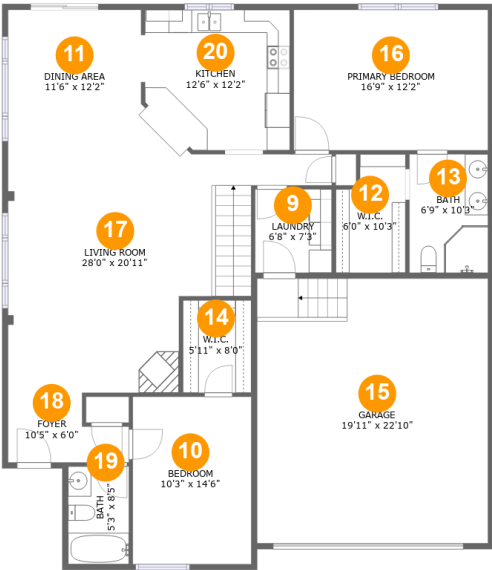
Room dimensions

Floor 1 Below ground Total:1015sqft Excluded: 358sqft

#		Max Dimensions	sqft	Included
1	Utility	11'10" x 7'6"	82 sq. ft	No
2	Storage	14'1" x 14'11"	166 sq. ft	No
3	Hall	26'0" x 3'0"	79 sq. ft	Yes
4	Recreation Room	20'0" x 25'4"	486 sq. ft	Yes
5	Bedroom	12'9" x 14'11"	168 sq. ft	Yes
6	Bedroom	12'11" x 11'6"	131 sq. ft	Yes
7	Bath	9'3" x 7'6"	64 sq. ft	Yes
8	Storage	15'0" x 7'4"	110 sq. ft	No

Home report

2309 5th Ave,Spearfish,SD,US



Room dimensions

Floor 2 Total:1425sqft Excluded: 456sqft

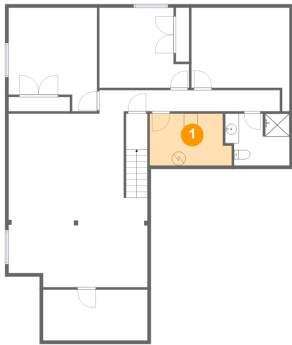
#		Max Dimensions	sqft	Included
9	Laundry	6'8" x 7'3"	48 sq. ft	Yes
10	Bedroom	10'3" x 14'6"	148 sq. ft	Yes
11	Dining Area	11'6" x 12'2"	140 sq. ft	Yes
12	W.I.C.	6'0" x 10'3"	55 sq. ft	Yes
13	Bath	6'9" x 10'3"	70 sq. ft	Yes
14	W.I.C.	5'11" x 8'0"	47 sq. ft	Yes
15	Garage	19'11" x 22'10"	456 sq. ft	No
16	Primary Bedroom	16'9" x 12'2"	204 sq. ft	Yes
17	Living Room	28'0" x 20'11"	405 sq. ft	Yes
18	Foyer	10'5" x 6'0"	51 sq. ft	Yes
19	Bath	5'3" x 8'5"	44 sq. ft	Yes

Home report

2309 5th Ave,Spearfish,SD,US

#		Max Dimensions	sqft	Included
20	Kitchen	12'6" x 12'2"	155 sq. ft	Yes

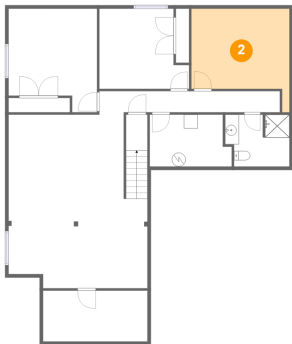
1 Floor 1 - Utility



Max Dimensions: 11'10" x 7'6"
Calculated Area: 82 sq. ft
Included: No

Heated: Yes
Finished: No
Enclosed: Yes
Contiguous: Yes
Permitted: Yes
Wet space: No
Addition: No
Conversion: No

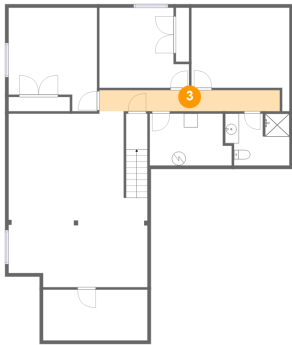
2 Floor 1 - Storage



Max Dimensions: 14'1" x 14'11"
Calculated Area: 166 sq. ft
Included: No

Heated: No
Finished: No
Enclosed: No
Contiguous: Yes
Permitted: Yes
Wet space: No
Addition: No
Conversion: No

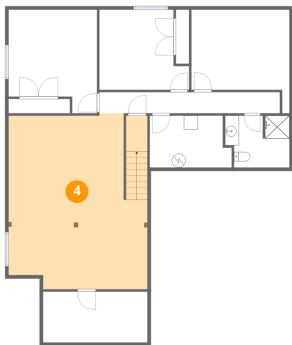
3 Floor 1 - Hall



Max Dimensions: 26'0" x 3'0"
Calculated Area: 79 sq. ft
Included: Yes

Heated: Yes
Finished: Yes
Enclosed: Yes
Contiguous: Yes
Permitted: Yes
Wet space: No
Addition: No
Conversion: No

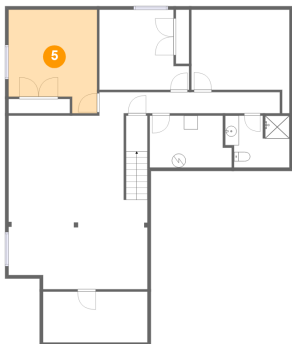
4 Floor 1 - Recreation Room



Max Dimensions: 20'0" x 25'4"
Calculated Area: 486 sq. ft
Included: Yes

Heated: Yes
Finished: Yes
Enclosed: Yes
Contiguous: Yes
Permitted: Yes
Wet space: No
Addition: No
Conversion: No

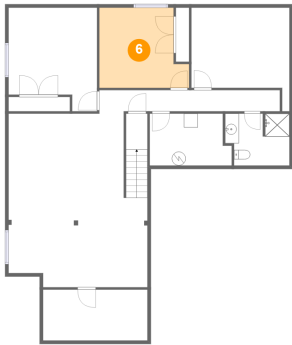
5 Floor 1 - Bedroom



Max Dimensions: 12'9" x 14'11"
Calculated Area: 168 sq. ft
Included: Yes

Heated: Yes
Finished: Yes
Enclosed: Yes
Contiguous: Yes
Permitted: Yes
Wet space: No
Addition: No
Conversion: No

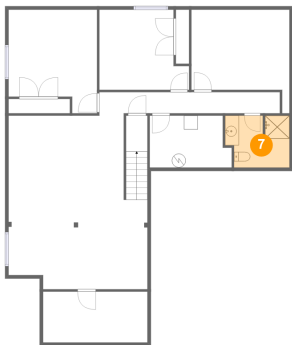
6 Floor 1 - Bedroom



Max Dimensions: 12'11" x 11'6"
Calculated Area: 131 sq. ft
Included: Yes

Heated: Yes
Finished: Yes
Enclosed: Yes
Contiguous: Yes
Permitted: Yes
Wet space: No
Addition: No
Conversion: No

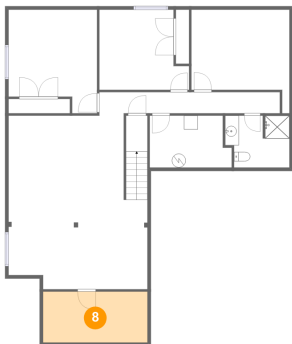
7 Floor 1 - Bath



Max Dimensions: 9'3" x 7'6"
Calculated Area: 64 sq. ft
Included: Yes

Heated: Yes
Finished: Yes
Enclosed: Yes
Contiguous: Yes
Permitted: Yes
Wet space: Yes
Addition: No
Conversion: No

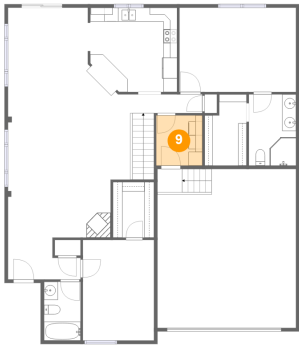
8 Floor 1 - Storage



Max Dimensions: 15'0" x 7'4"
Calculated Area: 110 sq. ft
Included: No

Heated: No
Finished: No
Enclosed: No
Contiguous: Yes
Permitted: Yes
Wet space: No
Addition: No
Conversion: No

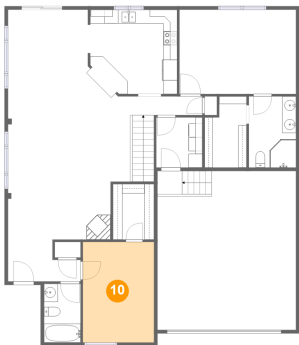
9 Floor 2 - Laundry



Max Dimensions: 6'8" x 7'3"
Calculated Area: 48 sq. ft
Included: Yes

Heated: Yes
Finished: Yes
Enclosed: Yes
Contiguous: Yes
Permitted: Yes
Wet space: No
Addition: No
Conversion: No

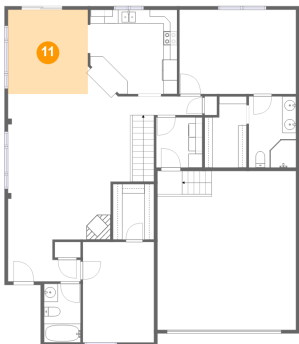
10 Floor 2 - Bedroom



Max Dimensions: 10'3" x 14'6"
Calculated Area: 148 sq. ft
Included: Yes

Heated: Yes
Finished: Yes
Enclosed: Yes
Contiguous: Yes
Permitted: Yes
Wet space: No
Addition: No
Conversion: No

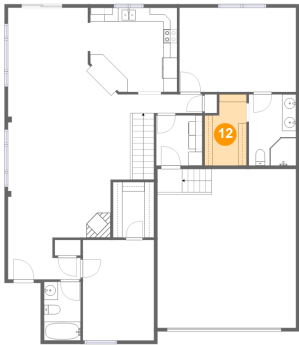
11 Floor 2 - Dining Area



Max Dimensions: 11'6" x 12'2"
Calculated Area: 140 sq. ft
Included: Yes

Heated: Yes
Finished: Yes
Enclosed: Yes
Contiguous: Yes
Permitted: Yes
Wet space: No
Addition: No
Conversion: No

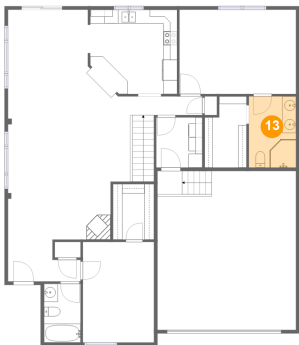
12 Floor 2 - W.I.C.



Max Dimensions: 6'0" x 10'3"
Calculated Area: 55 sq. ft
Included: Yes

Heated: Yes
Finished: Yes
Enclosed: Yes
Contiguous: Yes
Permitted: Yes
Wet space: No
Addition: No
Conversion: No

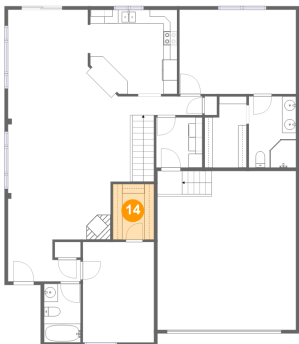
13 Floor 2 - Bath



Max Dimensions: 6'9" x 10'3"
Calculated Area: 70 sq. ft
Included: Yes

Heated: Yes
Finished: Yes
Enclosed: Yes
Contiguous: Yes
Permitted: Yes
Wet space: Yes
Addition: No
Conversion: No

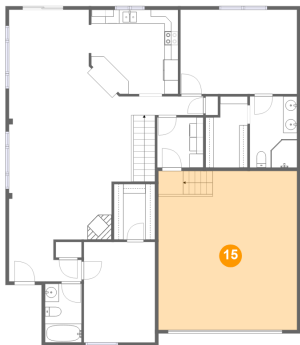
14 Floor 2 - W.I.C.



Max Dimensions: 5'11" x 8'0"
Calculated Area: 47 sq. ft
Included: Yes

Heated: Yes
Finished: Yes
Enclosed: Yes
Contiguous: Yes
Permitted: Yes
Wet space: No
Addition: No
Conversion: No

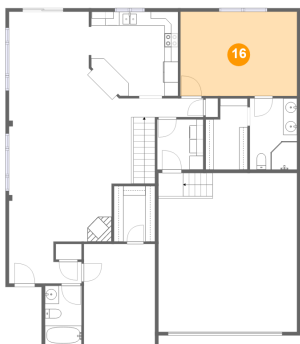
15 Floor 2 - Garage



Max Dimensions: 19'11" x 22'10"
Calculated Area: 456 sq. ft
Included: No

Heated: No
Finished: No
Enclosed: Yes
Contiguous: Yes
Permitted: Yes
Wet space: No
Addition: No
Conversion: No

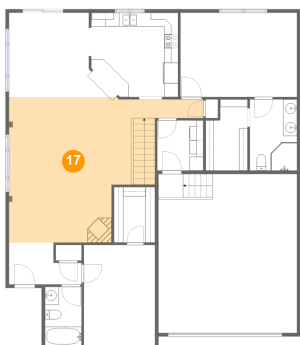
16 Floor 2 - Primary Bedroom



Max Dimensions: 16'9" x 12'2"
Calculated Area: 204 sq. ft
Included: Yes

Heated: Yes
Finished: Yes
Enclosed: Yes
Contiguous: Yes
Permitted: Yes
Wet space: No
Addition: No
Conversion: No

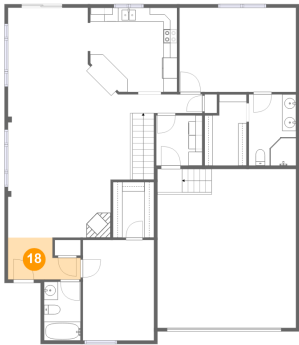
17 Floor 2 - Living Room



Max Dimensions: 28'0" x 20'11"
Calculated Area: 405 sq. ft
Included: Yes

Heated: Yes
Finished: Yes
Enclosed: Yes
Contiguous: Yes
Permitted: Yes
Wet space: No
Addition: No
Conversion: No

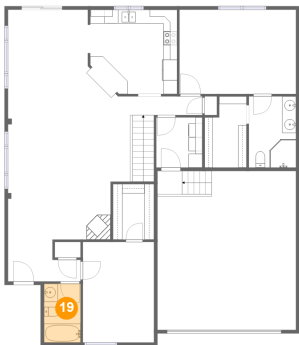
18 Floor 2 - Foyer



Max Dimensions: 10'5" x 6'0"
Calculated Area: 51 sq. ft
Included: Yes

Heated: Yes
Finished: Yes
Enclosed: Yes
Contiguous: Yes
Permitted: Yes
Wet space: No
Addition: No
Conversion: No

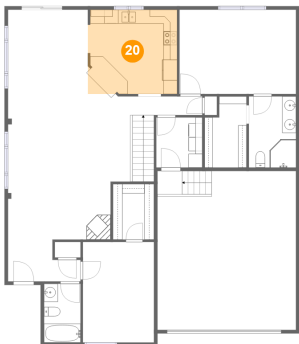
19 Floor 2 - Bath



Max Dimensions: 5'3" x 8'5"
Calculated Area: 44 sq. ft
Included: Yes

Heated: Yes
Finished: Yes
Enclosed: Yes
Contiguous: Yes
Permitted: Yes
Wet space: Yes
Addition: No
Conversion: No

20 Floor 2 - Kitchen



Max Dimensions: 12'6" x 12'2"
Calculated Area: 155 sq. ft
Included: Yes

Heated: Yes
Finished: Yes
Enclosed: Yes
Contiguous: Yes
Permitted: Yes
Wet space: No
Addition: No
Conversion: No