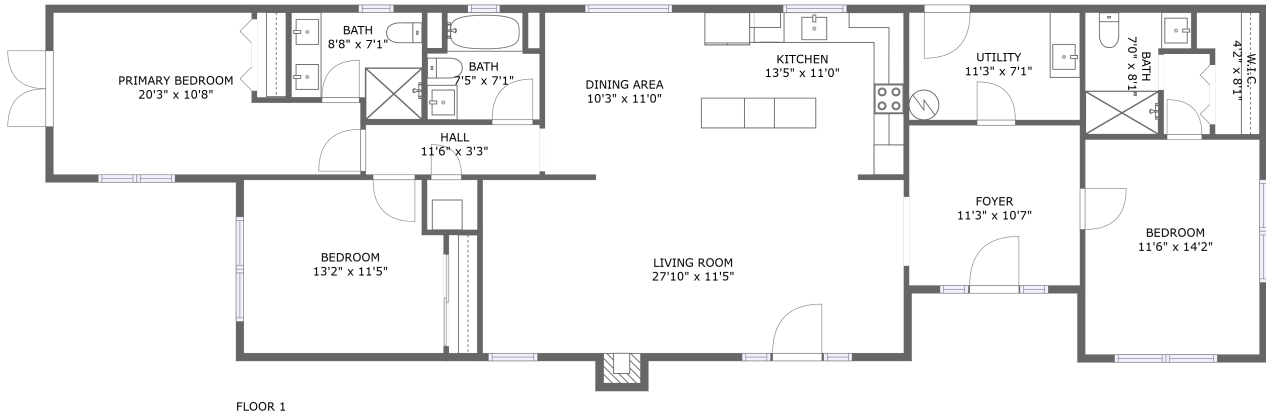


52 Citrus Avenue, Dunedin Marina, Dunedin, Pinellas County, Florida, United States, 34698



Property Summary



1 floors



3 bedrooms



3 bathrooms



1,703 total sqft

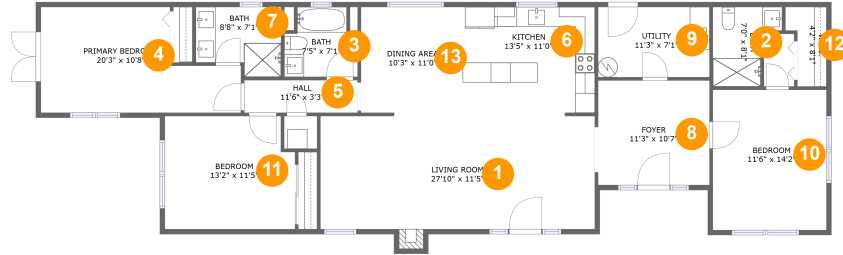


0 garages



1,696 Gross Living Area sqft

52 Citrus Avenue, Dunedin Marina, Dunedin, Pinellas County, Florida, United States, 34698



Room Dimensions

Floor 1

Total sqft: 1703

Living area: 1696

#	Room name	Dimensions	Area (sqft)	Counted as Living Area
1	Living Room	27'10" x 11'5"	323 sq. ft	Yes
2	Bath	7'0" x 8'1"	44 sq. ft	Yes
3	Bath	7'5" x 7'1"	46 sq. ft	Yes
4	Primary Bedroom	20'3" x 10'8"	174 sq. ft	Yes
5	Hall	11'6" x 3'3"	38 sq. ft	Yes
6	Kitchen	13'5" x 11'0"	147 sq. ft	Yes
7	Bath	8'8" x 7'1"	54 sq. ft	Yes
8	Foyer	11'3" x 10'7"	119 sq. ft	Yes
9	Utility	11'3" x 7'1"	80 sq. ft	Yes
10	Bedroom	11'6" x 14'2"	163 sq. ft	Yes
11	Bedroom	13'2" x 11'5"	146 sq. ft	Yes

Scan captured on Tue, 21 May 2024 01:58:17 GMT

Information is calculated by CubiCasa technology; deemed highly reliable but not guaranteed.

**52 Citrus Avenue, Dunedin Marina, Dunedin,
Pinellas County, Florida, United States, 34698**

#	Room name	Dimensions	Area (sqft)	Counted as Living Area
12	W.i.c.	4'2" x 8'1"	27 sq. ft	Yes
13	Dining Area	10'3" x 11'0"	112 sq. ft	Yes

52 Citrus Avenue, Dunedin Marina, Dunedin, Pinellas County, Florida, United States, 34698

1 Floor 1 - Living Room



Dimensions: 27'10" x 11'5"
Area: 323 sq. ft
Counted as Living Area:
Yes

Heated: Yes
Finished: Yes
Enclosed: Yes
Contiguous:
Yes
Permitted: Yes
Wet Space: No
Addition: No
Conversion: No

2 Floor 1 - Bath



Dimensions: 7'0" x 8'1"
Area: 44 sq. ft
Counted as Living Area:
Yes

Heated: Yes
Finished: Yes
Enclosed: Yes
Contiguous:
Yes
Permitted: Yes
Wet Space: Yes
Addition: No
Conversion: No

52 Citrus Avenue, Dunedin Marina, Dunedin, Pinellas County, Florida, United States, 34698

3 Floor 1 - Bath



Dimensions: 7'5" x 7'1"
Area: 46 sq. ft
Counted as Living Area:
Yes

Heated: Yes
Finished: Yes
Enclosed: Yes
Contiguous:
Yes
Permitted: Yes
Wet Space: Yes
Addition: No
Conversion: No

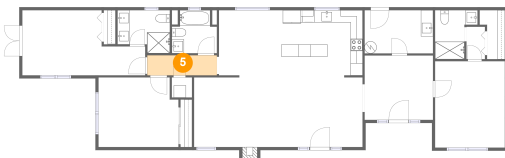
4 Floor 1 - Primary Bedroom



Dimensions: 20'3" x 10'8"
Area: 174 sq. ft
Counted as Living Area:
Yes

Heated: Yes
Finished: Yes
Enclosed: Yes
Contiguous:
Yes
Permitted: Yes
Wet Space: No
Addition: No
Conversion: No

5 Floor 1 - Hall

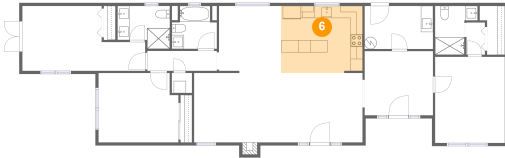


Dimensions: 11'6" x 3'3"
Area: 38 sq. ft
Counted as Living Area:
Yes

Heated: Yes
Finished: Yes
Enclosed: Yes
Contiguous:
Yes
Permitted: Yes
Wet Space: No
Addition: No
Conversion: No

52 Citrus Avenue, Dunedin Marina, Dunedin, Pinellas County, Florida, United States, 34698

6 Floor 1 - Kitchen



Dimensions: 13'5" x 11'0"
Area: 147 sq. ft
Counted as Living Area:
Yes

Heated: Yes
Finished: Yes
Enclosed: Yes
Contiguous:
Yes
Permitted: Yes
Wet Space: No
Addition: No
Conversion: No

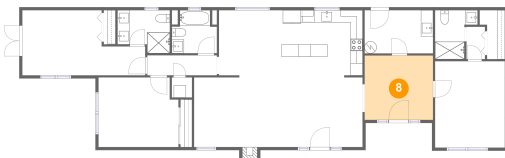
7 Floor 1 - Bath



Dimensions: 8'8" x 7'1"
Area: 54 sq. ft
Counted as Living Area:
Yes

Heated: Yes
Finished: Yes
Enclosed: Yes
Contiguous:
Yes
Permitted: Yes
Wet Space: Yes
Addition: No
Conversion: No

8 Floor 1 - Foyer



Dimensions: 11'3" x 10'7"
Area: 119 sq. ft
Counted as Living Area:
Yes

Heated: Yes
Finished: Yes
Enclosed: Yes
Contiguous:
Yes
Permitted: Yes
Wet Space: No
Addition: No
Conversion: No

52 Citrus Avenue, Dunedin Marina, Dunedin, Pinellas County, Florida, United States, 34698

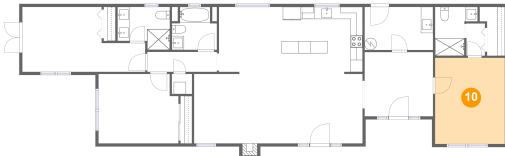
9 Floor 1 - Utility



Dimensions: 11'3" x 7'1"
Area: 80 sq. ft
Counted as Living Area:
Yes

Heated: Yes
Finished: Yes
Enclosed: Yes
Contiguous:
Yes
Permitted: Yes
Wet Space: No
Addition: No
Conversion: No

10 Floor 1 - Bedroom



Dimensions: 11'6" x 14'2"
Area: 163 sq. ft
Counted as Living Area:
Yes

Heated: Yes
Finished: Yes
Enclosed: Yes
Contiguous:
Yes
Permitted: Yes
Wet Space: No
Addition: No
Conversion: No

11 Floor 1 - Bedroom



Dimensions: 13'2" x 11'5"
Area: 146 sq. ft
Counted as Living Area:
Yes

Heated: Yes
Finished: Yes
Enclosed: Yes
Contiguous:
Yes
Permitted: Yes
Wet Space: No
Addition: No
Conversion: No

52 Citrus Avenue, Dunedin Marina, Dunedin, Pinellas County, Florida, United States, 34698

12 Floor 1 - W.i.c.



Dimensions: 4'2" x 8'1"
Area: 27 sq. ft
Counted as Living Area:
Yes

Heated: Yes
Finished: Yes
Enclosed: Yes
Contiguous:
Yes
Permitted: Yes
Wet Space: No
Addition: No
Conversion: No

13 Floor 1 - Dining Area



Dimensions: 10'3" x 11'0"
Area: 112 sq. ft
Counted as Living Area:
Yes

Heated: Yes
Finished: Yes
Enclosed: Yes
Contiguous:
Yes
Permitted: Yes
Wet Space: No
Addition: No
Conversion: No