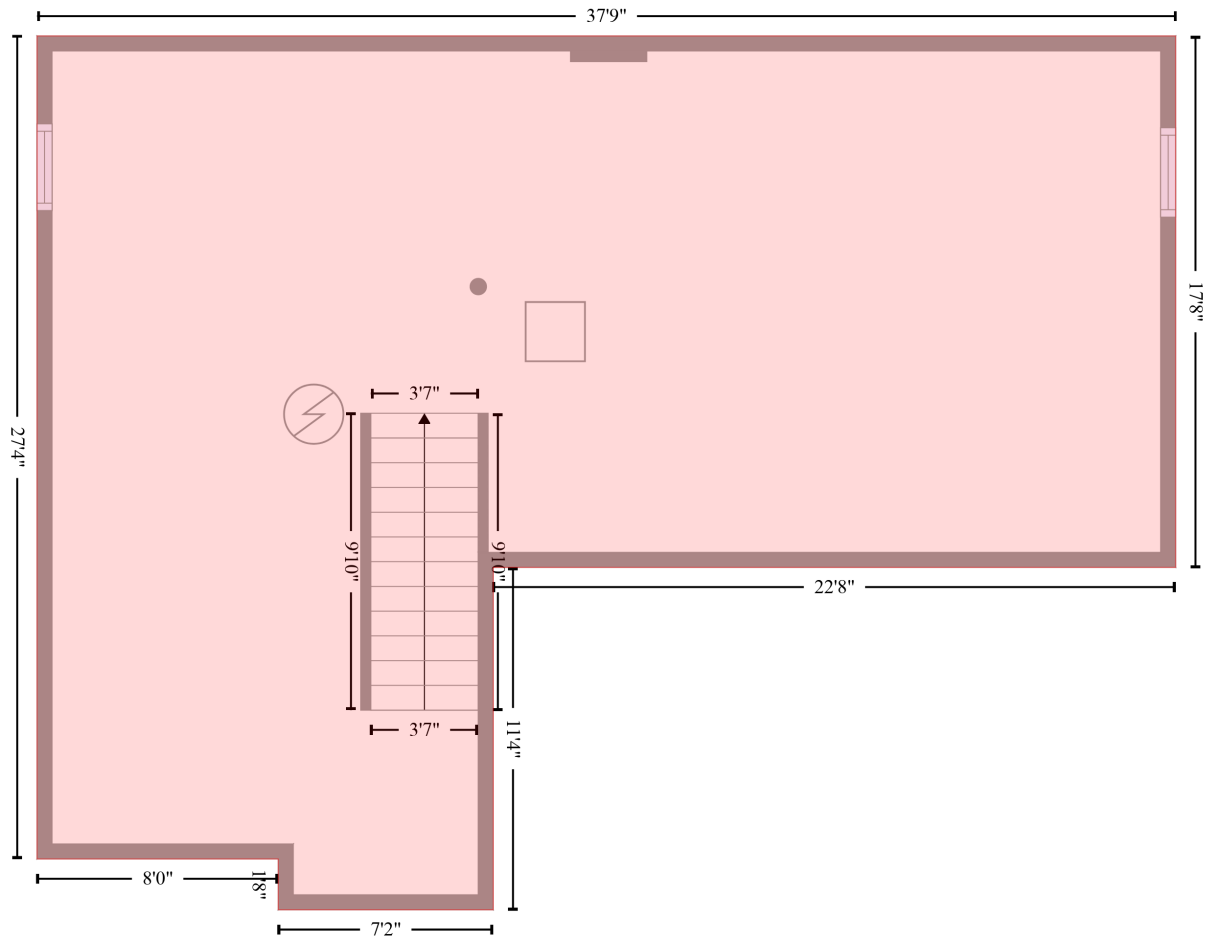


Teresa Drive, Walworth, New York 14568, United States

Gross Living Area: 1406 sq. ft

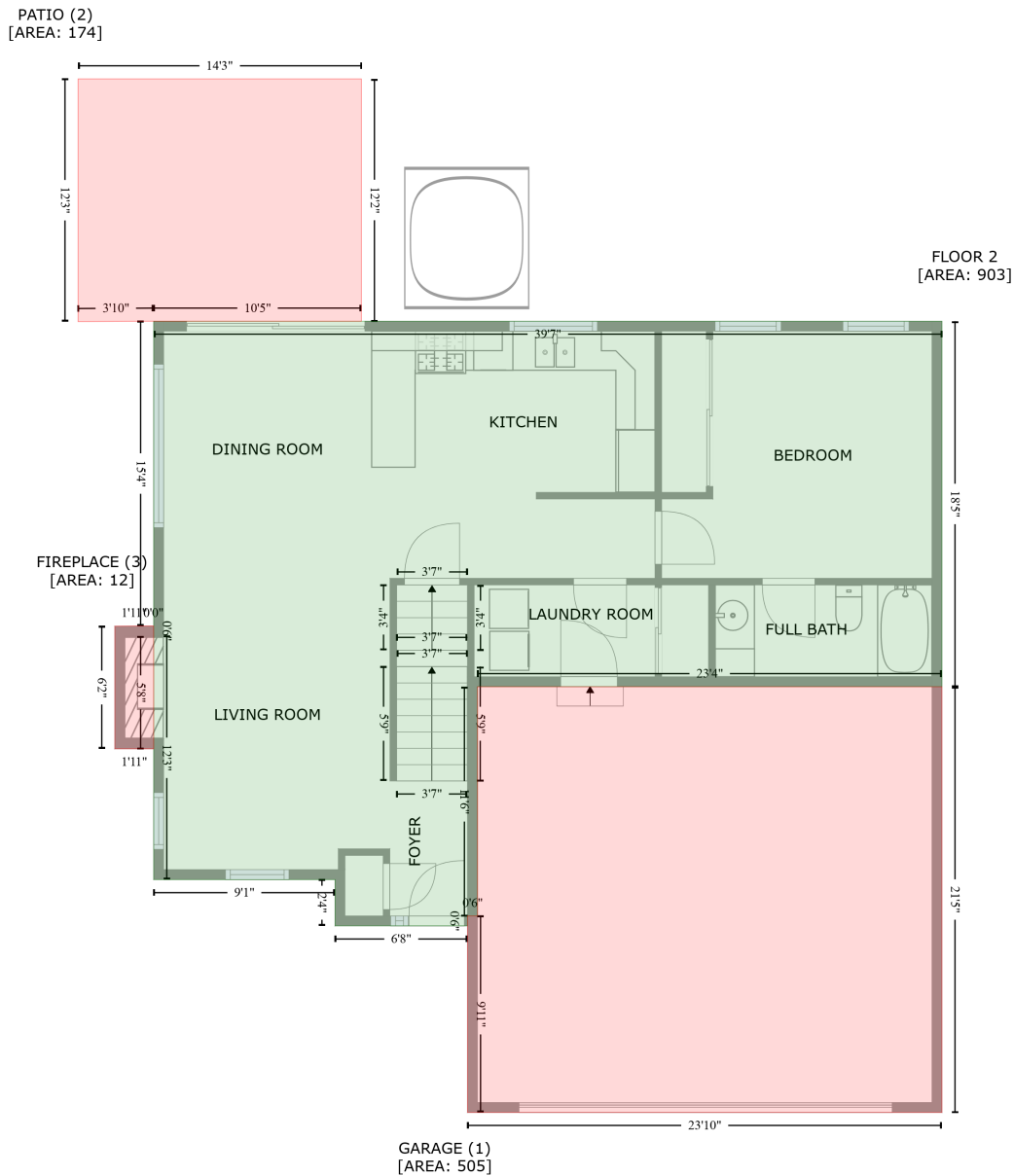
BASEMENT (1)
[AREA: 825]



Space	Area (sq. ft)	Calculation <small>Coordinate Polygon Area Algorithm using inches</small>
BASEMENT (Non-living area)	825	$ \begin{aligned} & -((689.4 + 689.4) * (1075.5 - 1287.3) + (689.4 + 417.6) * (1287.3 - 1287.3) + (417.6 + 417.6) * \\ & (1287.3 - 1423.7) + (417.6 + 332) * (1423.7 - 1423.7) + (332 + 332) * (1423.7 - 1403.5) + (332 + \\ & 236) * (1403.5 - 1403.5) + (236 + 236) * (1403.5 - 1075.5) + (236 + 689.4) * (1075.5 - 1075.5)) * \\ & 0.5 * 0.00694 \end{aligned} $

Teresa Drive, Walworth, New York 14568, United States

Gross Living Area: 1406 sq. ft



Space

Area (sq. ft)

Calculation Coordinate Polygon Area Algorithm using inches

FLOOR 2
(Living area)

903

$$\begin{aligned}
 & -((697.8 + 697.8) * (1066.7 - 1287.3) + (697.8 + 417.6) * (1287.3 - 1287.3) + (417.6 + 417.6) * \\
 & (1287.3 - 1425.6) + (417.6 + 411.6) * (1425.6 - 1425.6) + (411.6 + 411.6) * (1425.6 - 1431.6) + \\
 & (411.6 + 331.7) * (1431.6 - 1431.6) + (331.7 + 331.7) * (1431.6 - 1403.7) + (331.7 + 222.3) * \\
 & (1403.7 - 1403.7) + (222.3 + 222.3) * (1403.7 - 1256.7) + (222.3 + 222.3) * (1256.7 - 1250.6) + \\
 & (222.3 + 222.3) * (1250.6 - 1250.6) + (222.3 + 222.3) * (1250.6 - 1066.7) + (222.3 + 697.8) * \\
 & (1066.7 - 1066.7)) * 0.5 * 0.00694
 \end{aligned}$$

Teresa Drive, Walworth, New York 14568, United States

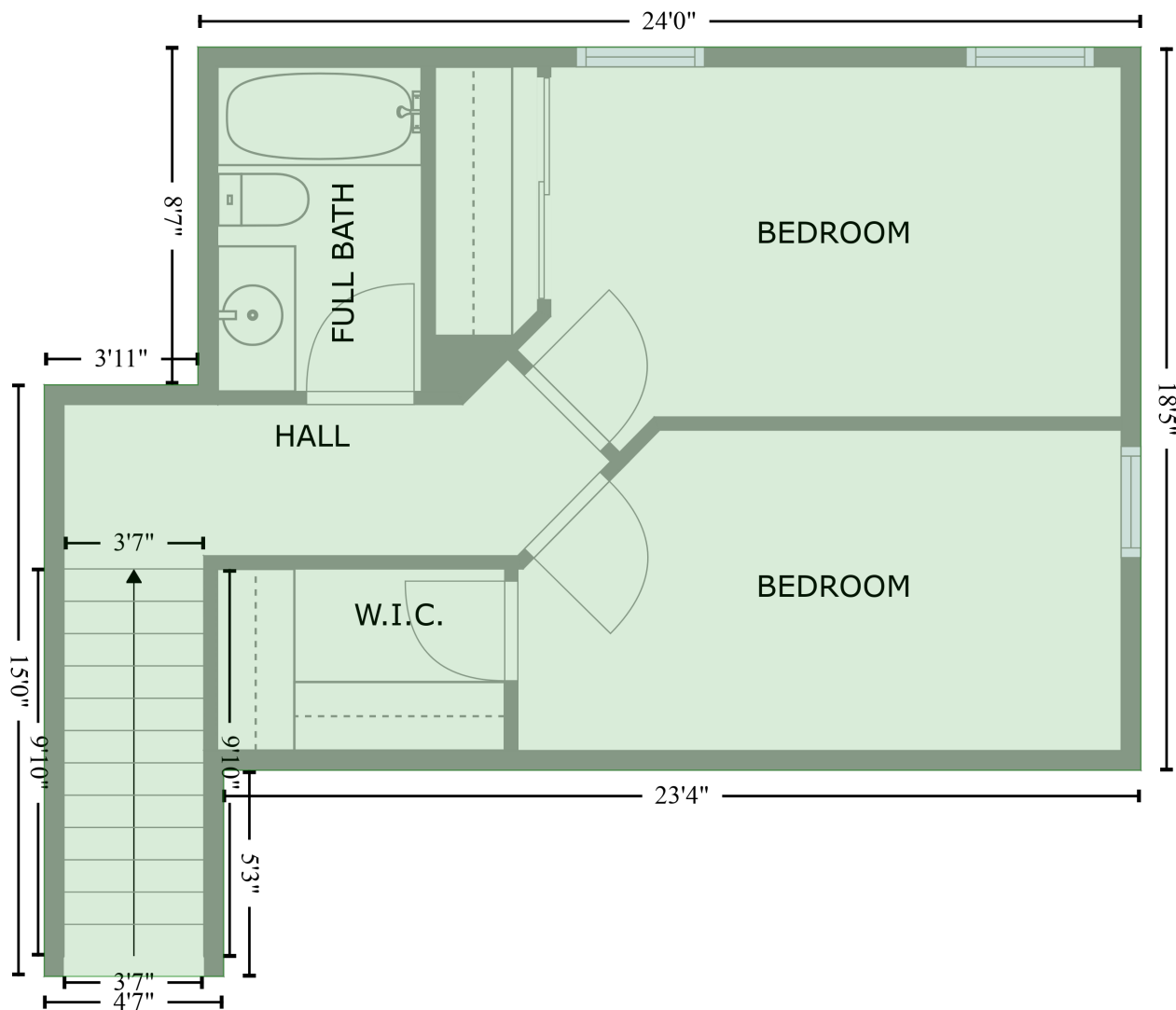
Gross Living Area: 1406 sq. ft

Space	Area (sq. ft)	Calculation <small>Coordinate Polygon Area Algorithm using inches</small>
GARAGE (Non-living area)	505	$-\left((697.8 + 697.8) * (1287.3 - 1544.2) + (697.8 + 411.6) * (1544.2 - 1544.2) + (411.6 + 411.6) * (1544.2 - 1425.6) + (411.6 + 417.6) * (1425.6 - 1425.6) + (417.6 + 417.6) * (1425.6 - 1287.3) + (417.6 + 697.8) * (1287.3 - 1287.3)\right) * 0.5 * 0.00694$
PATIO (Non-living area)	174	$-\left((347.6 + 347.6) * (920.4 - 1066.7) + (347.6 + 222.3) * (1066.7 - 1066.7) + (222.3 + 176.7) * (1066.7 - 1066.9) + (176.7 + 176.7) * (1066.9 - 920.4) + (176.7 + 347.6) * (920.4 - 920.4)\right) * 0.5 * 0.00694$
FIREPLACE (Non-living area)	12	$-\left((222.3 + 222.3) * (1250.6 - 1256.6) + (222.3 + 222.3) * (1256.6 - 1324.8) + (222.3 + 198.9) * (1324.8 - 1324.8) + (198.9 + 198.9) * (1324.8 - 1250.8) + (198.9 + 222.3) * (1250.8 - 1250.6)\right) * 0.5 * 0.00694$

Teresa Drive, Walworth, New York 14568, United States

Gross Living Area: 1406 sq. ft

FLOOR 3 [AREA: 503]



Space	Area (sq. ft)	Calculation <small>Coordinate Polygon Area Algorithm using inches</small>
FLOOR 3 (Living area)	503	$ \begin{aligned} & -((697.8 + 697.8) * (1066.7 - 1287.3) + (697.8 + 417.6) * (1287.3 - 1287.3) + (417.6 + 417.6) * \\ & (1287.3 - 1350.2) + (417.6 + 362.9) * (1350.2 - 1350.2) + (362.9 + 362.9) * (1350.2 - 1169.7) + \\ & (362.9 + 409.8) * (1169.7 - 1169.7) + (409.8 + 409.8) * (1169.7 - 1066.7) + (409.8 + 697.8) * \\ & (1066.7 - 1066.7)) * 0.5 * 0.00694 \end{aligned} $