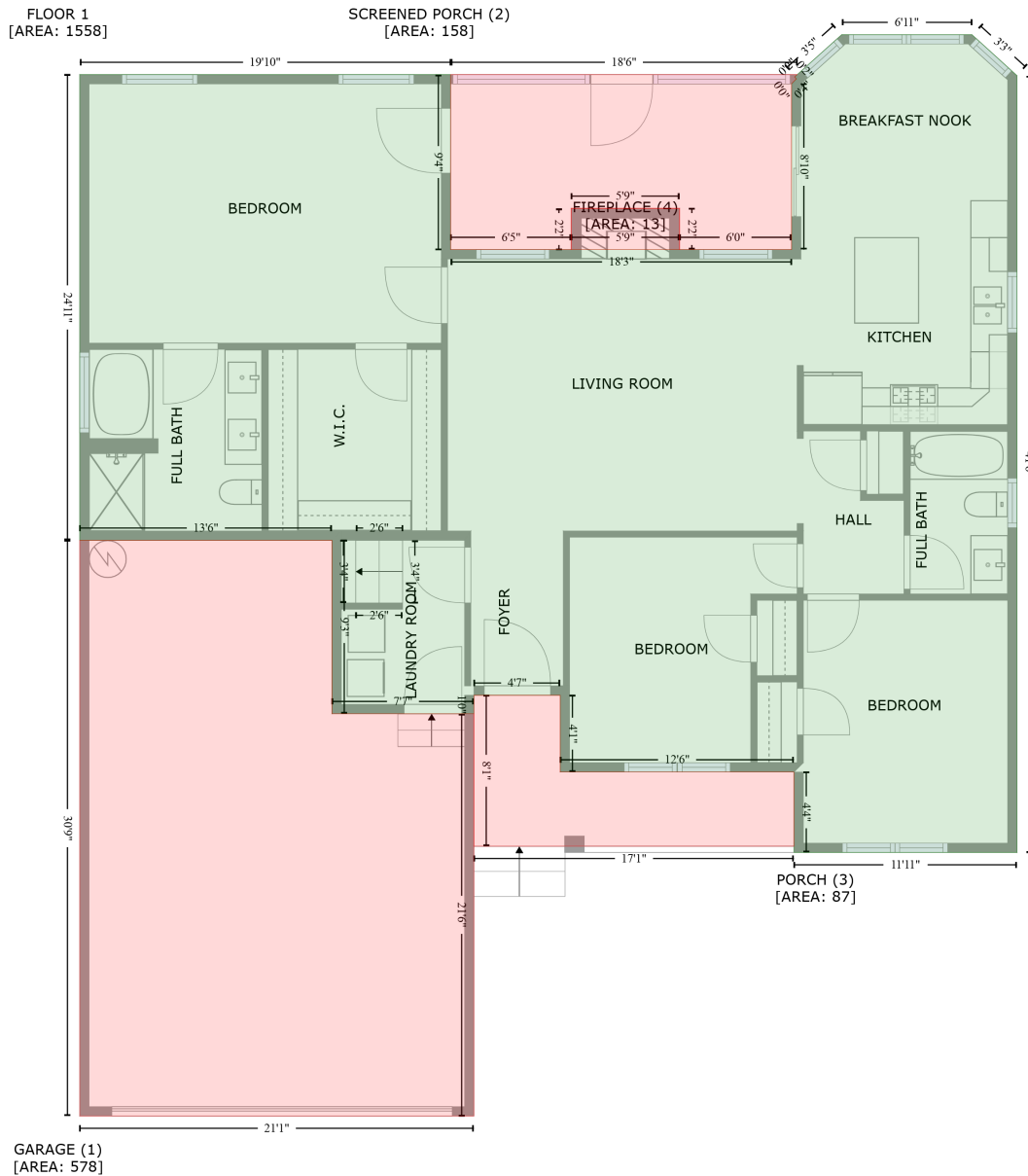


45 Prospectus Lane, Franklinton, Franklin County, North Carolina, United States, 27525

Gross Living Area: 1974 sq. ft



Space	Area (sq. ft)	Calculation
FLOOR 1 (Living area)	1558	Coordinate Polygon Area Algorithm using inches $ \begin{aligned} & -((595.3 + 624.3) * (16.1 - 42.5) + (624.3 + 624.3) * (42.5 - 540.3) + (624.3 + 481.2) * (540.3 - \\ & 540.3) + (481.2 + 481.2) * (540.3 - 488.8) + (481.2 + 331.2) * (488.8 - 488.8) + (331.2 + 331.2) * \\ & (488.8 - 439.6) + (331.2 + 275.8) * (439.6 - 439.6) + (275.8 + 275.8) * (439.6 - 451.4) + (275.8 + \\ & 184.7) * (451.4 - 451.4) + (184.7 + 184.7) * (451.4 - 340.2) + (184.7 + 22.9) * (340.2 - 340.2) + \\ & (22.9 + 22.9) * (340.2 - 41.7) + (22.9 + 260.9) * (41.7 - 41.7) + (260.9 + 260.9) * (41.7 - 153.9) + \\ & (260.9 + 479.6) * (153.9 - 153.9) + (479.6 + 479.6) * (153.9 - 47.7) + (479.6 + 482.7) * (47.7 - \\ & 44.5) + (482.7 + 481.6) * (44.5 - 43.3) + (481.6 + 511.8) * (43.3 - 16.1) + (511.8 + 595.3) * (16.1 - \end{aligned} $

45 Prospectus Lane, Franklinton, Franklin County, North Carolina, United States, 27525

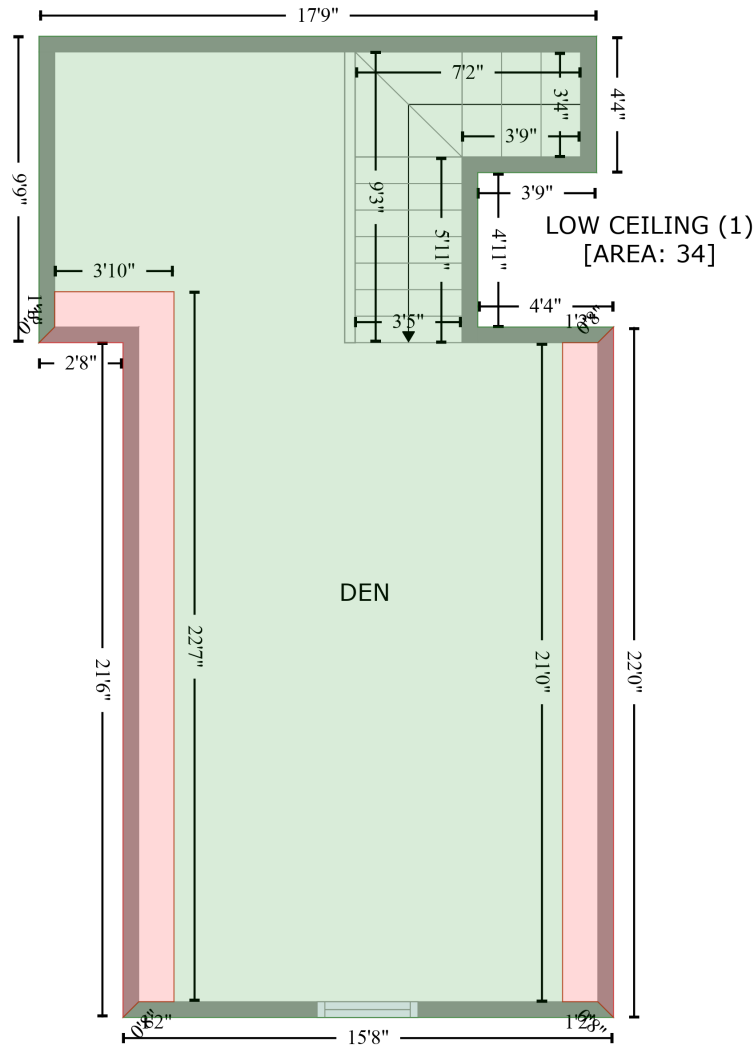
Gross Living Area: 1974 sq. ft

Space	Area (sq. ft)	Calculation <small>Coordinate Polygon Area Algorithm using inches</small>
		16.1)) * 0.5 * 0.00694
GARAGE (Non-living area)	578	-((184.7 + 184.7) * (340.2 - 451.4) + (184.7 + 275.8) * (451.4 - 451.4) + (275.8 + 275.8) * (451.4 - 709.2) + (275.8 + 22.9) * (709.2 - 709.2) + (22.9 + 22.9) * (709.2 - 340.2) + (22.9 + 184.7) * (340.2 - 340.2)) * 0.5 * 0.00694
SCREENED PORCH (Non-living area)	158	-((483.2 + 481.6) * (41.7 - 43.3) + (481.6 + 482.7) * (43.3 - 44.5) + (482.7 + 479.5) * (44.5 - 47.6) + (479.5 + 479.6) * (47.6 - 47.7) + (479.6 + 479.6) * (47.7 - 153.9) + (479.6 + 407.7) * (153.9 - 153.9) + (407.7 + 407.7) * (153.9 - 127.6) + (407.7 + 338.2) * (127.6 - 127.6) + (338.2 + 338.2) * (127.6 - 153.9) + (338.2 + 260.9) * (153.9 - 153.9) + (260.9 + 260.9) * (153.9 - 41.7) + (260.9 + 483.2) * (41.7 - 41.7)) * 0.5 * 0.00694
PORCH (Non-living area)	87	-((331.2 + 331.2) * (439.6 - 488.8) + (331.2 + 481.2) * (488.8 - 488.8) + (481.2 + 481.2) * (488.8 - 536.3) + (481.2 + 275.8) * (536.3 - 536.3) + (275.8 + 275.8) * (536.3 - 439.6) + (275.8 + 331.2) * (439.6 - 439.6)) * 0.5 * 0.00694
FIREPLACE (Non-living area)	13	-((407.7 + 407.7) * (127.6 - 153.9) + (407.7 + 338.2) * (153.9 - 153.9) + (338.2 + 338.2) * (153.9 - 127.6) + (338.2 + 407.7) * (127.6 - 127.6)) * 0.5 * 0.00694

45 Prospectus Lane, Franklinton, Franklin County, North Carolina, United States, 27525

Gross Living Area: 1974 sq. ft

FLOOR 2
[AREA: 416]



LOW CEILING (2)
[AREA: 41]

Space	Area (sq. ft)	Calculation <small>Coordinate Polygon Area Algorithm using inches</small>
FLOOR 2 (Living area)	416	$ \begin{aligned} & -((226.3 + 226.3) * (334.3 - 386.4) + (226.3 + 180.8) * (386.4 - 386.4) + (180.8 + 180.8) * (386.4 - 445.5) \\ & + (180.8 + 232.8) * (445.5 - 445.5) + (232.8 + 226.8) * (445.5 - 451.5) + (226.8 + 213.3) * \\ & (451.5 - 451.5) + (213.3 + 213.3) * (451.5 - 703.3) + (213.3 + 226.8) * (703.3 - 703.3) + (226.8 + \\ & 232.8) * (703.3 - 709.3) + (232.8 + 45.1) * (709.3 - 709.3) + (45.1 + 51.1) * (709.3 - 703.3) + (51.1 \\ & + 64.6) * (703.3 - 703.3) + (64.6 + 64.6) * (703.3 - 432) + (64.6 + 19) * (432 - 432) + (19 + 19) * \\ & (432 - 445.5) + (19 + 13) * (445.5 - 451.5) + (13 + 13) * (451.5 - 334.3) + (13 + 226.3) * (334.3 - \\ & 334.3)) * 0.5 * 0.00694 \end{aligned} $

45 Prospectus Lane, Franklinton, Franklin County, North Carolina, United States, 27525

Gross Living Area: 1974 sq. ft

Space	Area (sq. ft)	Calculation <small>Coordinate Polygon Area Algorithm using inches</small>
LOW CEILING (Non-living area)	34	$-((232.8 + 232.8) * (445.5 - 709.3) + (232.8 + 226.8) * (709.3 - 703.3) + (226.8 + 213.3) * (703.3 - 703.3) + (213.3 + 213.3) * (703.3 - 451.5) + (213.3 + 226.8) * (451.5 - 451.5) + (226.8 + 232.8) * (451.5 - 445.5)) * 0.5 * 0.00694$
LOW CEILING (Non-living area)	41	$-((64.6 + 64.6) * (432 - 703.3) + (64.6 + 51.1) * (703.3 - 703.3) + (51.1 + 45.1) * (703.3 - 709.3) + (45.1 + 45.1) * (709.3 - 451.5) + (45.1 + 13) * (451.5 - 451.5) + (13 + 19) * (451.5 - 445.5) + (19 + 19) * (445.5 - 432) + (19 + 64.6) * (432 - 432)) * 0.5 * 0.00694$