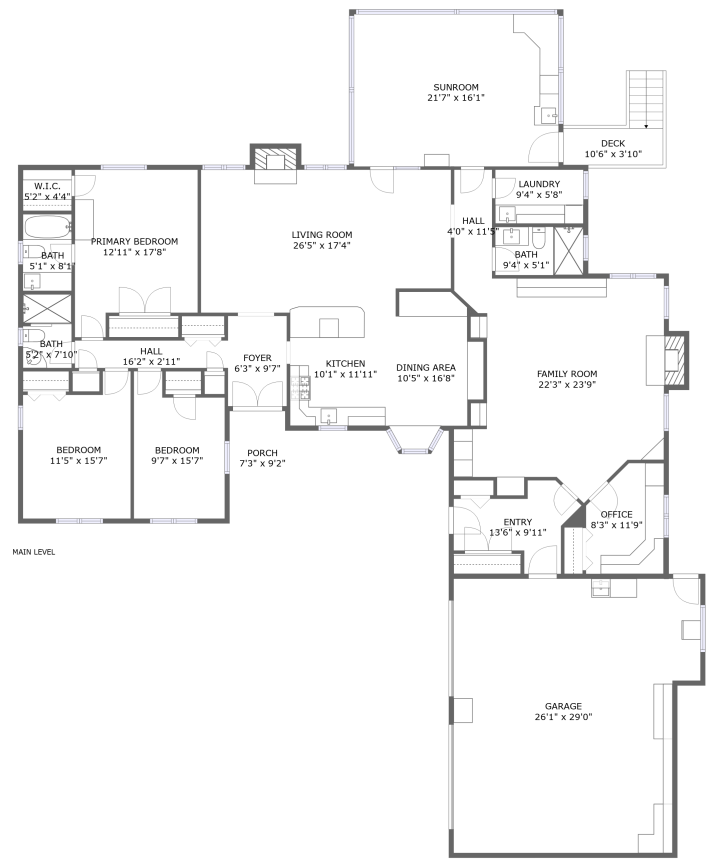


Home report

116 Deer Creek Drive, North Shore, Moneta, Franklin County,
Virginia, United States, 24121



Total Area: 2650 sq. ft

Floor 1: 2650 sq. ft

Excluded: Garage 702 sq. ft, Porch 64 sq. ft, Deck 62 sq. ft, Fireplace 25 sq. ft, Walls: 180 sq. ft

Property summary

 1 Floors

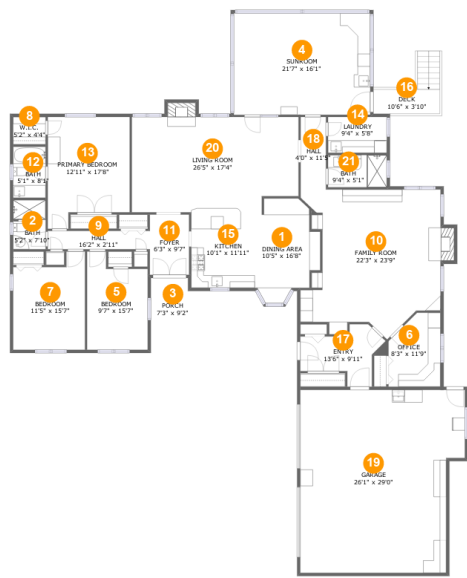
 3 Bedrooms

 3 Bathrooms

 1 Garages

Home report

116 Deer Creek Drive, North Shore, Moneta, Franklin County,
Virginia, United States, 24121



Room dimensions

Floor 1 Total:2650sqft Excluded: 853sqft

#		Max Dimensions	sqft	Included
1	Dining Area	10'5" x 16'8"	139 sq. ft	Yes
2	Bath	5'2" x 7'10"	40 sq. ft	Yes
3	Porch	7'3" x 9'2"	64 sq. ft	No
4	Sunroom	21'7" x 16'1"	348 sq. ft	Yes
5	Bedroom	9'7" x 15'7"	131 sq. ft	Yes
6	Office	8'3" x 11'9"	86 sq. ft	Yes
7	Bedroom	11'5" x 15'7"	156 sq. ft	Yes
8	W.I.C.	5'2" x 4'4"	22 sq. ft	Yes
9	Hall	16'2" x 2'11"	47 sq. ft	Yes
10	Family Room	22'3" x 23'9"	445 sq. ft	Yes
11	Foyer	6'3" x 9'7"	59 sq. ft	Yes

Home report

**116 Deer Creek Drive, North Shore, Moneta, Franklin County,
Virginia, United States, 24121**

#		Max Dimensions	sqft	Included
12	Bath	5'1" x 8'1"	42 sq. ft	Yes
13	Primary Bedroom	12'11" x 17'8"	205 sq. ft	Yes
14	Laundry	9'4" x 5'8"	53 sq. ft	Yes
15	Kitchen	10'1" x 11'11"	120 sq. ft	Yes
16	Deck	10'6" x 3'10"	62 sq. ft	No
17	Entry	13'6" x 9'11"	83 sq. ft	Yes
18	Hall	4'0" x 11'5"	46 sq. ft	Yes
19	Garage	26'1" x 29'0"	702 sq. ft	No
20	Living Room	26'5" x 17'4"	395 sq. ft	Yes
21	Bath	9'4" x 5'1"	48 sq. ft	Yes

116 Deer Creek Drive, North Shore, Moneta, Franklin County,
Virginia, United States, 24121

1 Floor 1 - Dining Area



Max Dimensions: 10'5" x 16'8"
Calculated Area: 139 sq. ft
Included: Yes

Heated: Yes
Finished: Yes
Enclosed: Yes
Contiguous: Yes
Permitted: Yes
Wet space: No
Addition: No
Conversion: No

2 Floor 1 - Bath



Max Dimensions: 5'2" x 7'10"
Calculated Area: 40 sq. ft
Included: Yes

Heated: Yes
Finished: Yes
Enclosed: Yes
Contiguous: Yes
Permitted: Yes
Wet space: Yes
Addition: No
Conversion: No

116 Deer Creek Drive, North Shore, Moneta, Franklin County,
Virginia, United States, 24121

3 Floor 1 - Porch



Max Dimensions: 7'3" x 9'2"
Calculated Area: 64 sq. ft
Included: No

Heated: No
Finished: Yes
Enclosed: No
Contiguous: Yes
Permitted: Yes
Wet space: No
Addition: No
Conversion: No

4 Floor 1 - Sunroom



Max Dimensions: 21'7" x 16'1"
Calculated Area: 348 sq. ft
Included: Yes

Heated: Yes
Finished: Yes
Enclosed: Yes
Contiguous: Yes
Permitted: Yes
Wet space: No
Addition: No
Conversion: No

5 Floor 1 - Bedroom



Max Dimensions: 9'7" x 15'7"
Calculated Area: 131 sq. ft
Included: Yes

Heated: Yes
Finished: Yes
Enclosed: Yes
Contiguous: Yes
Permitted: Yes
Wet space: No
Addition: No
Conversion: No

116 Deer Creek Drive, North Shore, Moneta, Franklin County,
Virginia, United States, 24121

6 Floor 1 - Office



Max Dimensions: 8'3" x 11'9"
Calculated Area: 86 sq. ft
Included: Yes

Heated: Yes
Finished: Yes
Enclosed: Yes
Contiguous: Yes
Permitted: Yes
Wet space: No
Addition: No
Conversion: No

7 Floor 1 - Bedroom



Max Dimensions: 11'5" x 15'7"
Calculated Area: 156 sq. ft
Included: Yes

Heated: Yes
Finished: Yes
Enclosed: Yes
Contiguous: Yes
Permitted: Yes
Wet space: No
Addition: No
Conversion: No

8 Floor 1 - W.I.C.



Max Dimensions: 5'2" x 4'4"
Calculated Area: 22 sq. ft
Included: Yes

Heated: Yes
Finished: Yes
Enclosed: Yes
Contiguous: Yes
Permitted: Yes
Wet space: No
Addition: No
Conversion: No

116 Deer Creek Drive, North Shore, Moneta, Franklin County,
Virginia, United States, 24121

9 Floor 1 - Hall



Max Dimensions: 16'2" x 2'11"
Calculated Area: 47 sq. ft
Included: Yes

Heated: Yes
Finished: Yes
Enclosed: Yes
Contiguous: Yes
Permitted: Yes
Wet space: No
Addition: No
Conversion: No

10 Floor 1 - Family Room



Max Dimensions: 22'3" x 23'9"
Calculated Area: 445 sq. ft
Included: Yes

Heated: Yes
Finished: Yes
Enclosed: Yes
Contiguous: Yes
Permitted: Yes
Wet space: No
Addition: No
Conversion: No

11 Floor 1 - Foyer



Max Dimensions: 6'3" x 9'7"
Calculated Area: 59 sq. ft
Included: Yes

Heated: Yes
Finished: Yes
Enclosed: Yes
Contiguous: Yes
Permitted: Yes
Wet space: No
Addition: No
Conversion: No

116 Deer Creek Drive, North Shore, Moneta, Franklin County,
Virginia, United States, 24121

12 Floor 1 - Bath



Max Dimensions: 5'1" x 8'1"
Calculated Area: 42 sq. ft
Included: Yes

Heated: Yes
Finished: Yes
Enclosed: Yes
Contiguous: Yes
Permitted: Yes
Wet space: Yes
Addition: No
Conversion: No

13 Floor 1 - Primary Bedroom



Max Dimensions: 12'11" x 17'8"
Calculated Area: 205 sq. ft
Included: Yes

Heated: Yes
Finished: Yes
Enclosed: Yes
Contiguous: Yes
Permitted: Yes
Wet space: No
Addition: No
Conversion: No

14 Floor 1 - Laundry



Max Dimensions: 9'4" x 5'8"
Calculated Area: 53 sq. ft
Included: Yes

Heated: Yes
Finished: Yes
Enclosed: Yes
Contiguous: Yes
Permitted: Yes
Wet space: No
Addition: No
Conversion: No

116 Deer Creek Drive, North Shore, Moneta, Franklin County,
Virginia, United States, 24121

15 Floor 1 - Kitchen



Max Dimensions: 10'1" x 11'11"
Calculated Area: 120 sq. ft
Included: Yes

Heated: Yes
Finished: Yes
Enclosed: Yes
Contiguous: Yes
Permitted: Yes
Wet space: No
Addition: No
Conversion: No

16 Floor 1 - Deck



Max Dimensions: 10'6" x 3'10"
Calculated Area: 62 sq. ft
Included: No

Heated: No
Finished: Yes
Enclosed: No
Contiguous: Yes
Permitted: Yes
Wet space: No
Addition: No
Conversion: No

17 Floor 1 - Entry



Max Dimensions: 13'6" x 9'11"
Calculated Area: 83 sq. ft
Included: Yes

Heated: Yes
Finished: Yes
Enclosed: Yes
Contiguous: Yes
Permitted: Yes
Wet space: No
Addition: No
Conversion: No

116 Deer Creek Drive, North Shore, Moneta, Franklin County,
Virginia, United States, 24121

18 Floor 1 - Hall



Max Dimensions: 4'0" x 11'5"
Calculated Area: 46 sq. ft
Included: Yes

Heated: Yes
Finished: Yes
Enclosed: Yes
Contiguous: Yes
Permitted: Yes
Wet space: No
Addition: No
Conversion: No

19 Floor 1 - Garage



Max Dimensions: 26'1" x 29'0"
Calculated Area: 702 sq. ft
Included: No

Heated: No
Finished: No
Enclosed: Yes
Contiguous: Yes
Permitted: Yes
Wet space: No
Addition: No
Conversion: No

20 Floor 1 - Living Room



Max Dimensions: 26'5" x 17'4"
Calculated Area: 395 sq. ft
Included: Yes

Heated: Yes
Finished: Yes
Enclosed: Yes
Contiguous: Yes
Permitted: Yes
Wet space: No
Addition: No
Conversion: No

116 Deer Creek Drive, North Shore, Moneta, Franklin County,
Virginia, United States, 24121

21 Floor 1 - Bath



Max Dimensions: 9'4" x 5'1"
Calculated Area: 48 sq. ft
Included: Yes

Heated: Yes
Finished: Yes
Enclosed: Yes
Contiguous: Yes
Permitted: Yes
Wet space: Yes
Addition: No
Conversion: No