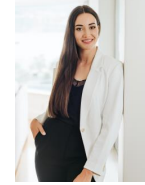


1924 - 938 Smithe Street

Vancouver, BC V6Z 3H8



DARIA IVANOVA

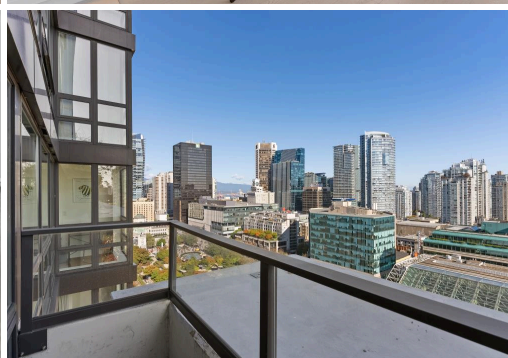
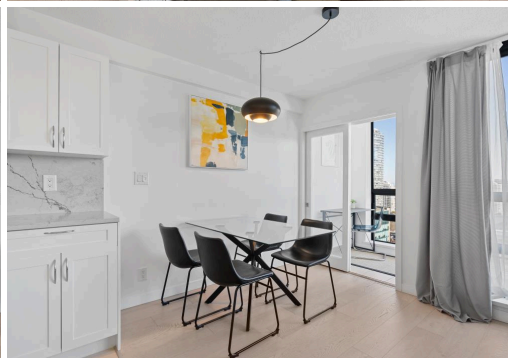
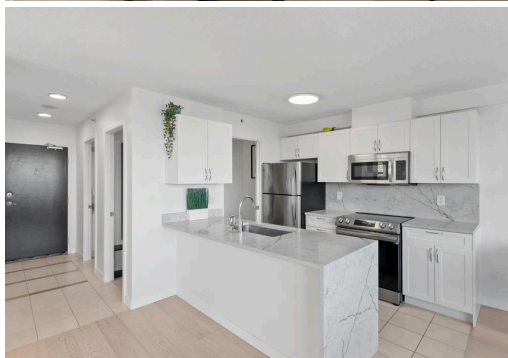
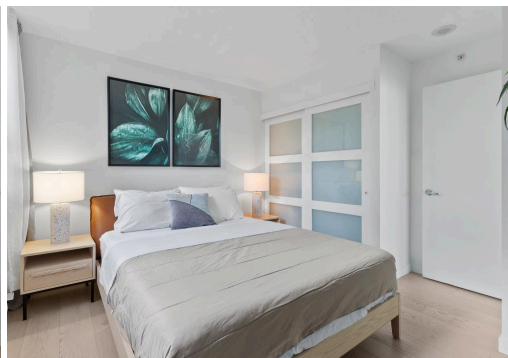


Daria Ivanova
(778)-858-6830
daria@dariaivanova.ca
IG: @daria_realestate

\$899,000

2 beds, 1 bath, 855 sqft

Welcome to Electric Avenue by BOSA, your urban oasis in the vibrant heart of downtown Vancouver! This bright and spacious corner unit boasts 2 bedrooms, 1 bathroom, den/in-suite storage, a solarium, stunning green space and city views. Large windows and a sun-soaked solarium ensure natural light floods every corner of the space. Sleek stone countertops and hardwood floors enhance the condo's chic, modern aesthetic. With access to top-notch amenities including a state-of-the-art gym, a private movie theatre, a party room and a 24-hour concierge your every need is catered to. Located in the core of downtown you'll have quick access to Vancouver's best dining, shopping, and entertainment options. Don't miss the opportunity to make this stunning downtown retreat your new home.



OAKWYN REALTY



See more information at greycoastfilm.hd.pics/1731273 All information is deemed reliable but not guaranteed.