



Home report


1431 Normandy Lane, Allen's Ridge, Palm Harbor, Pinellas
County, Florida, United States, 34683





Property summary


 **1** Garages


 **3** Bedrooms

 **2** Bathrooms

 **0** Half baths

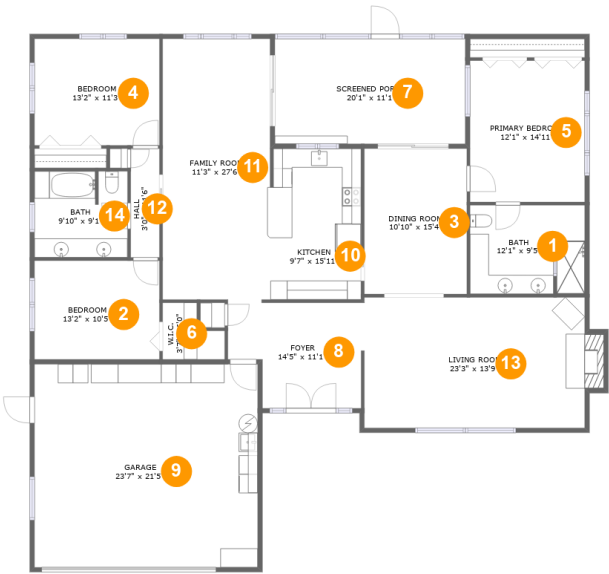
 **1** Floors

 **2,054** Gross living area sqft

 **2,836** Total sqft

Home report

1431 Normandy Lane, Allen's Ridge, Palm Harbor, Pinellas
County, Florida, United States, 34683



Room dimensions

Floor 1 Total sqft: 2836 Living area: 2054

#		Dimensions	sqft	Counted as living area
1	Bath	12'1" x 9'5"	112 sq. ft	Yes
2	Bedroom	13'2" x 10'5"	137 sq. ft	Yes
3	Dining Room	10'10" x 15'4"	166 sq. ft	Yes
4	Bedroom	13'2" x 11'3"	148 sq. ft	Yes
5	Primary Bedroom	12'1" x 14'11"	181 sq. ft	Yes
6	W.I.C.	3'7" x 6'0"	31 sq. ft	Yes
7	Screened Porch	20'1" x 11'1"	223 sq. ft	No
8	Foyer	14'5" x 11'1"	141 sq. ft	Yes
9	Garage	23'7" x 21'5"	505 sq. ft	No
10	Kitchen	9'7" x 15'11"	152 sq. ft	Yes
11	Family Room	11'3" x 27'6"	312 sq. ft	Yes

Home report

1431 Normandy Lane, Allen's Ridge, Palm Harbor, Pinellas
County, Florida, United States, 34683

#		Dimensions	sqft	Counted as living area
12	Hall	3'0" x 11'6"	35 sq. ft	Yes
13	Living Room	23'3" x 13'9"	332 sq. ft	Yes
14	Bath	9'10" x 9'1"	88 sq. ft	Yes

**1431 Normandy Lane, Allen's Ridge, Palm Harbor, Pinellas
County, Florida, United States, 34683**

1 Floor 1 - Bath



Dimensions: 12'1" x 9'5"
Area: 112 sq. ft
Counted as living area: Yes

Heated: Yes
Finished: Yes
Enclosed: Yes
Contiguous: Yes
Permitted: Yes
Wet space: Yes
Addition: No
Conversion: No

2 Floor 1 - Bedroom



Dimensions: 13'2" x 10'5"
Area: 137 sq. ft
Counted as living area: Yes

Heated: Yes
Finished: Yes
Enclosed: Yes
Contiguous: Yes
Permitted: Yes
Wet space: No
Addition: No
Conversion: No

1431 Normandy Lane, Allen's Ridge, Palm Harbor, Pinellas
County, Florida, United States, 34683

3 Floor 1 - Dining Room



Dimensions: 10'10" x 15'4"
Area: 166 sq. ft
Counted as living area: Yes

Heated: Yes
Finished: Yes
Enclosed: Yes
Contiguous: Yes
Permitted: Yes
Wet space: No
Addition: No
Conversion: No

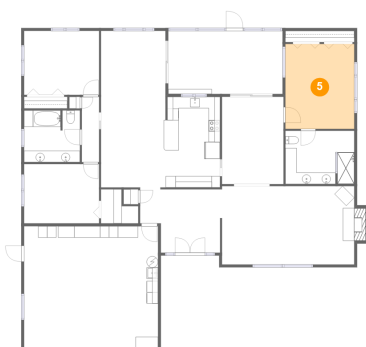
4 Floor 1 - Bedroom



Dimensions: 13'2" x 11'3"
Area: 148 sq. ft
Counted as living area: Yes

Heated: Yes
Finished: Yes
Enclosed: Yes
Contiguous: Yes
Permitted: Yes
Wet space: No
Addition: No
Conversion: No

5 Floor 1 - Primary Bedroom



Dimensions: 12'1" x 14'11"
Area: 181 sq. ft
Counted as living area: Yes

Heated: Yes
Finished: Yes
Enclosed: Yes
Contiguous: Yes
Permitted: Yes
Wet space: No
Addition: No
Conversion: No

Home report

1431 Normandy Lane, Allen's Ridge, Palm Harbor, Pinellas
County, Florida, United States, 34683

6 Floor 1 - W.I.C.



Dimensions: 3'7" x 6'0"
Area: 31 sq. ft
Counted as living area: Yes

Heated: Yes
Finished: Yes
Enclosed: Yes
Contiguous: Yes
Permitted: Yes
Wet space: No
Addition: No
Conversion: No

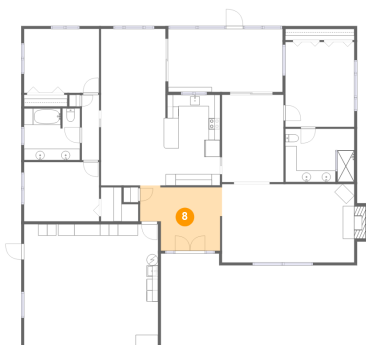
7 Floor 1 - Screened Porch



Dimensions: 20'1" x 11'1"
Area: 223 sq. ft
Counted as living area: No

Heated: No
Finished: Yes
Enclosed: No
Contiguous: Yes
Permitted: Yes
Wet space: No
Addition: No
Conversion: No

8 Floor 1 - Foyer



Dimensions: 14'5" x 11'1"
Area: 141 sq. ft
Counted as living area: Yes

Heated: Yes
Finished: Yes
Enclosed: Yes
Contiguous: Yes
Permitted: Yes
Wet space: No
Addition: No
Conversion: No

1431 Normandy Lane, Allen's Ridge, Palm Harbor, Pinellas
County, Florida, United States, 34683

9 Floor 1 - Garage



Dimensions: 23'7" x 21'5"
Area: 505 sq. ft
Counted as living area: No

Heated: No
Finished: No
Enclosed: Yes
Contiguous: Yes
Permitted: Yes
Wet space: No
Addition: No
Conversion: No

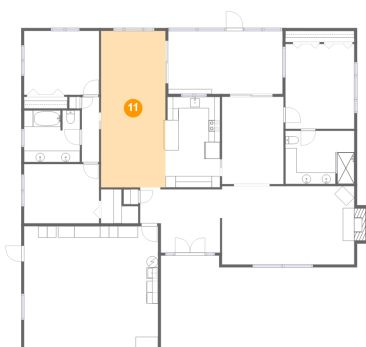
10 Floor 1 - Kitchen



Dimensions: 9'7" x 15'11"
Area: 152 sq. ft
Counted as living area: Yes

Heated: Yes
Finished: Yes
Enclosed: Yes
Contiguous: Yes
Permitted: Yes
Wet space: No
Addition: No
Conversion: No

11 Floor 1 - Family Room



Dimensions: 11'3" x 27'6"
Area: 312 sq. ft
Counted as living area: Yes

Heated: Yes
Finished: Yes
Enclosed: Yes
Contiguous: Yes
Permitted: Yes
Wet space: No
Addition: No
Conversion: No

Home report

1431 Normandy Lane, Allen's Ridge, Palm Harbor, Pinellas
County, Florida, United States, 34683

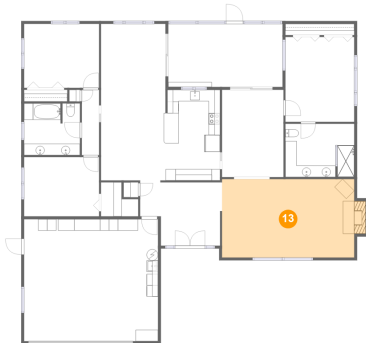
12 Floor 1 - Hall



Dimensions: 3'0" x 11'6"
Area: 35 sq. ft
Counted as living area: Yes

Heated: Yes
Finished: Yes
Enclosed: Yes
Contiguous: Yes
Permitted: Yes
Wet space: No
Addition: No
Conversion: No

13 Floor 1 - Living Room



Dimensions: 23'3" x 13'9"
Area: 332 sq. ft
Counted as living area: Yes

Heated: Yes
Finished: Yes
Enclosed: Yes
Contiguous: Yes
Permitted: Yes
Wet space: No
Addition: No
Conversion: No

14 Floor 1 - Bath



Dimensions: 9'10" x 9'1"
Area: 88 sq. ft
Counted as living area: Yes

Heated: Yes
Finished: Yes
Enclosed: Yes
Contiguous: Yes
Permitted: Yes
Wet space: Yes
Addition: No
Conversion: No